

750% DBS - TVF  
 30 APR 1979  
 REFERENCE: 260279

**SNIA** AREA SCALA COELI WESTERN  
 DIVISIONE MINERARIA PROSPECT CALABRIA RICE RICERCA  
 GEOFISICHE s.p.a.

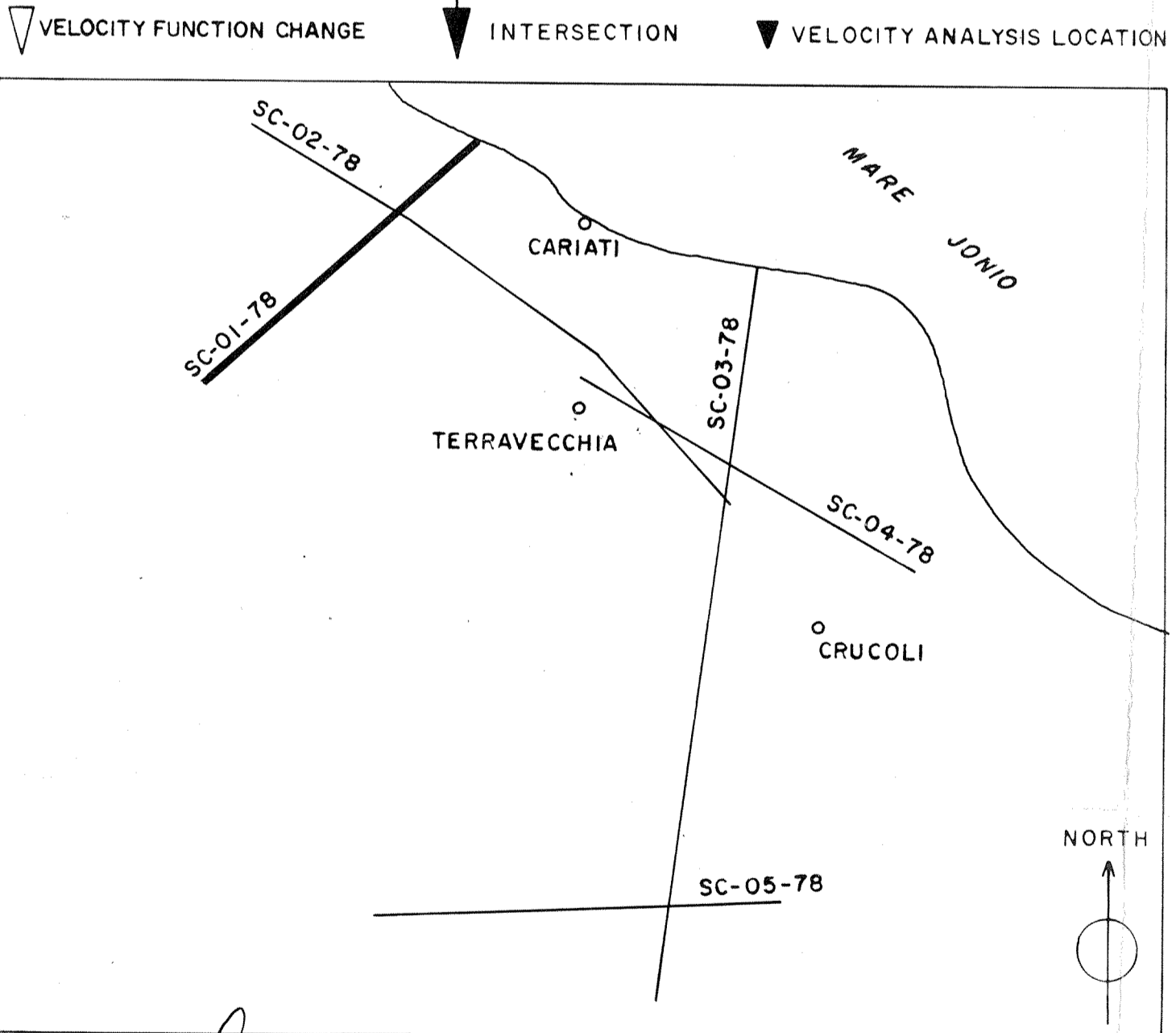
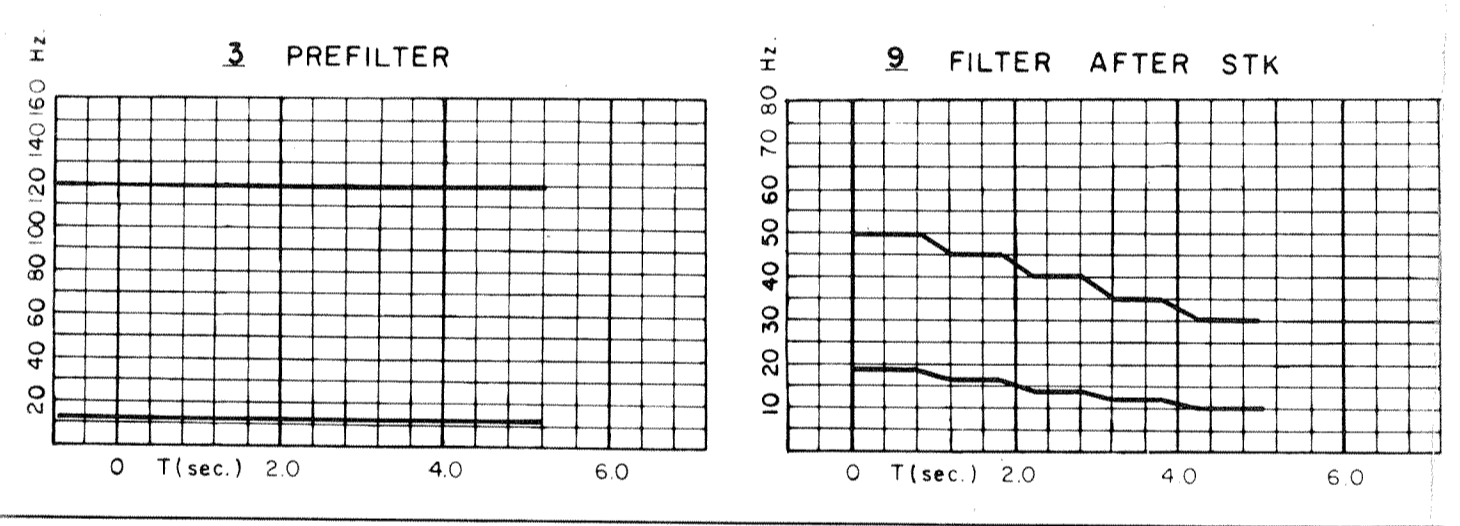
RECORDING DATA		PLAYBACK DATA	
SHOT BY	SIAG	SAMPLE RATE	4 ms
PARTY	78-02-07	RECORD LENGTH	5200 ms
MAGNETIC RECORDER	DFS-V	AMPLITUDE	16
GAIN	I.F.P.	WEATHERING VEL.	- m/sec
SAMPLE RATE	2	SUBWEATHERING VEL.	2700 m/sec
RECORD LENGTH	6000 ms	DATUM PLANE	SEA LEVEL
FILTER	HI 128 Hz LOW 12 Hz	Scale	VERTICAL 1 Sec 10 cm HORIZONTAL 1 km 9.46 cm
ALIASING FILTER	Hz	PREPROCESSOR REEL No.	81654
SUBSURFACE COVERAGE	75.0%	STACK REEL No.	75528
DATE	NOV. 1978, JAN. 1979	DATE	FEBRUARY, 1979

FIELD DATA	SKETCH
SPREAD CONFIGURATION 1475 - 50 - 1475 m.	30 SP 31 60 1450-150-1450

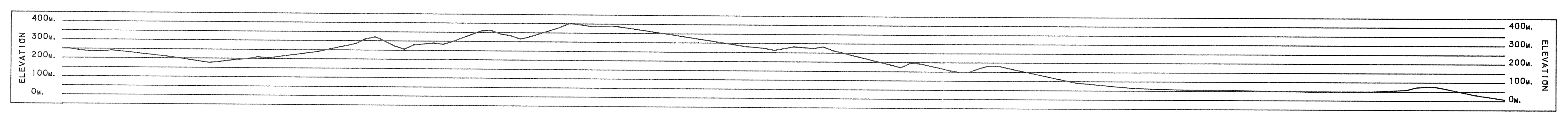
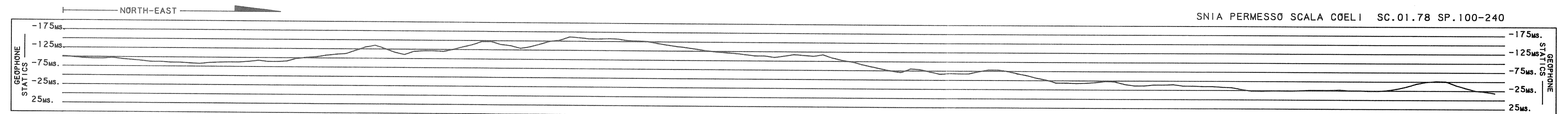
ENERGY SOURCE	DYNAMITE
SHOT HOLES / S.P.	1
AVERAGE CHARGE / SHOT	10 Kg.
AVERAGE SHOT DEPTH	24-27 m.

GEOPHONE PATTERN	
GROUP INTERVAL	50 m.
GEOPHONES / GROUP	24
GEOPHONE FREQUENCY	10 Hz.

PROCESSING	
TRANSCRIPTION	RESIDUAL STATICS
EDIT DEMULTIPLEX ONLY	MANUAL
EDIT GEOPHONE AMPLITUDE	SURFACE CONSISTENT
CORRELATION	C.D.P. METHOD
PREPROCESSOR	STACK
DYNAMIC CORRECTION	WEIGHTED STACK
STRAIGHT RAY	SPECIAL GAIN ROUTINE
CURVED RAY	SPECIAL MUTE
STATIC CORRECTIONS	MULTICHANNEL FILTER (PASS)
PRELIMINARY STACK	MULTICHANNEL FILTER (REJECT)
100% CORRECTED	MIGRATION
VELOCITY ANALYSIS	DEPTH CONVERSION
CONSTANT VELOCITY STK	DIST. (m.) 580 630 1080 1480
PREDICTIVE TIME DOMAIN DECON	MUTE (ms) 4 100 400 700
BEFORE STACK	PREDICTION DISTANCE OPERATOR LENGTH No WINDOWS
AFTER STACK	36 160 3



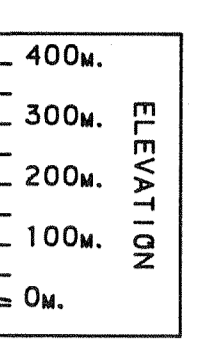
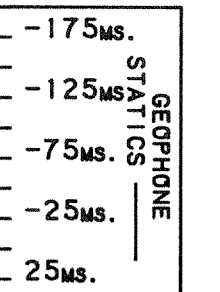
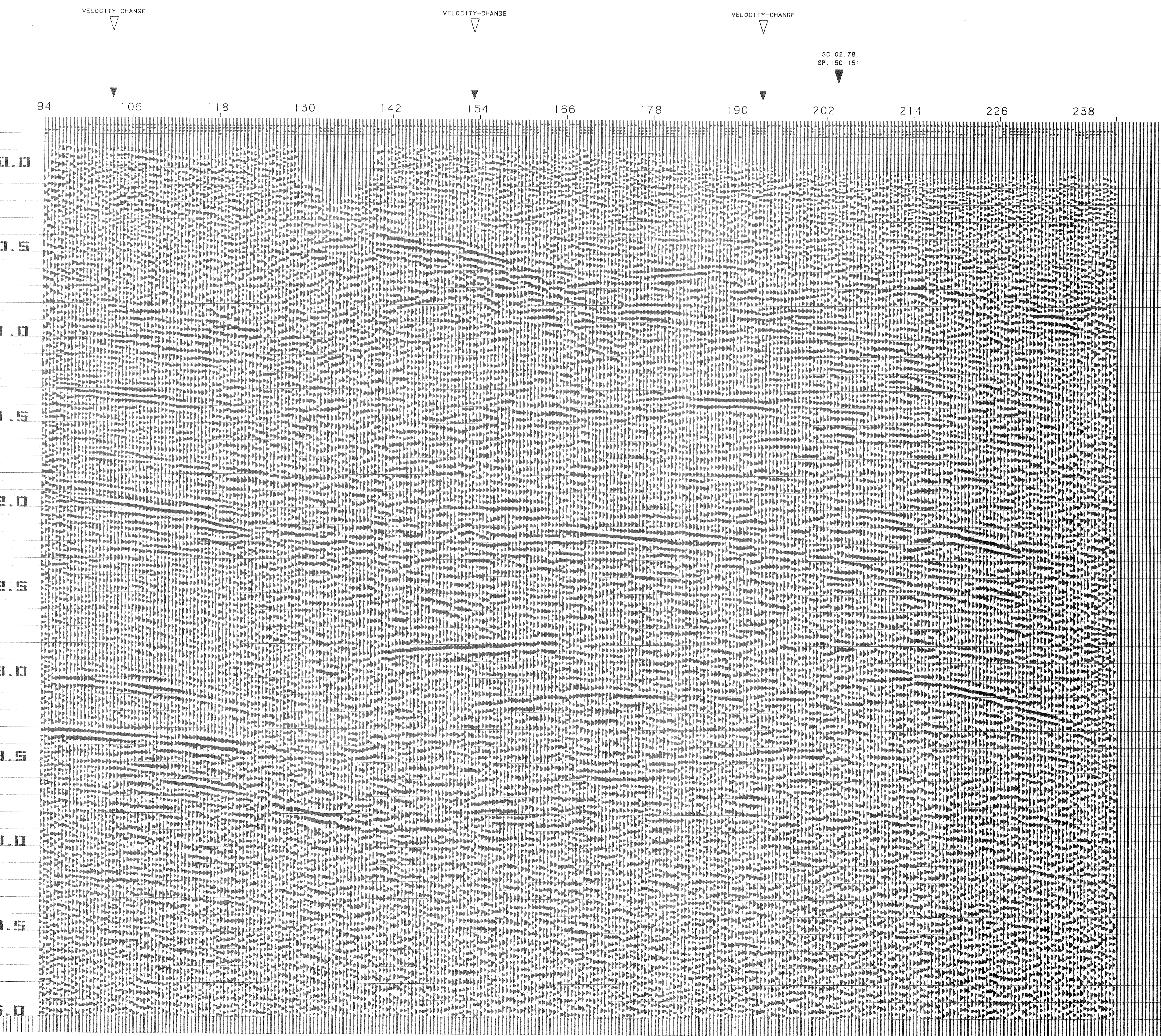
ANALYST *Handwritten signature*



TIME	VEL
0.004	2800
0.100	2900
0.500	3200
1.050	3700
1.550	4000
2.000	4200
3.000	4400
3.400	4500
5.300	5000

TIME	VEL
0.004	2600
0.150	2700
0.400	3200
1.100	3700
2.100	4100
2.800	4300
3.900	4800
5.300	5000

TIME	VEL
0.004	2600
0.350	3200
0.500	3400
0.850	3600
1.300	3900
2.100	4200
3.000	4400
5.300	5000



SC.02.78  
SP.150-151