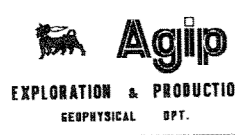


LINE AV316-78 1200% S.P. 115 S.P. 286  
 D.B.S.-T.V.F.



EXPLORATION & PRODUCTION  
 SEISMOLOGICAL OPT. AREA SOUTHERN ITALY  
 PROSPECT SAVIGNANO IRPINO

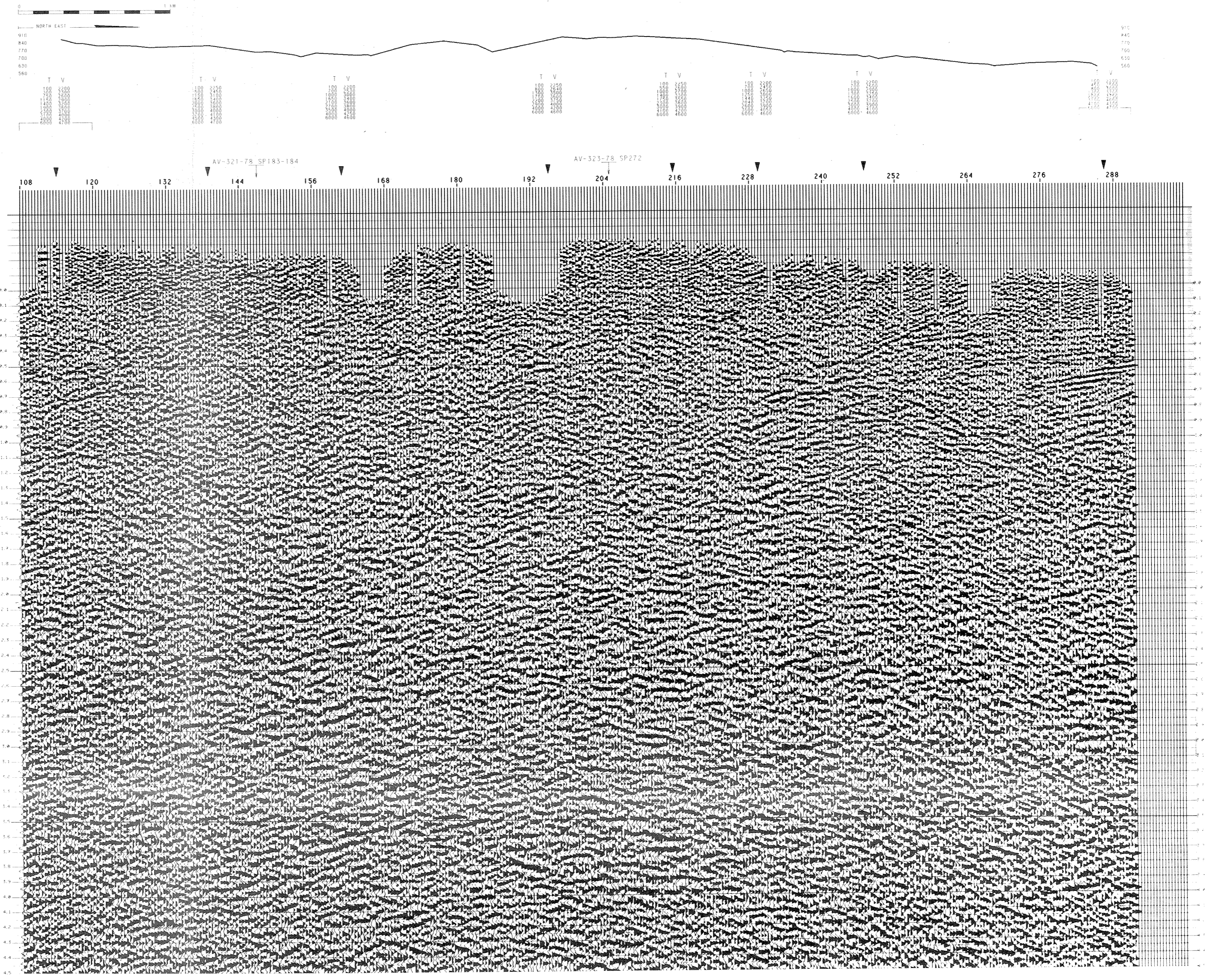
RECORDING	DATA	PLAYBACK	DATA				
CONTRACTOR	C.G.G.	DATUM PLANE	400 MT.				
PARTY NO	127 35 06	VERTICAL SCALE	1 SEC.-10 CM.				
MAGNETIC RECORDER	MDR 4200	HORIZONTAL SCALE	1 KM.-10 CM.				
SAMPLE RATE	2 MS.	PREPROCESSING FEEL	5576				
RECORD LENGTH	6 SEC.	STAIN REEL	4915				
FILTER L.V.	12 HZ.	PREVIOUS PROCESSING					
ALIASING FILTER	110 HZ.	DATE	1979				
DATE	MAY 1978						
SPREAD CONFIGURATION 1980-100-0-100-1980							
TRACE / S.P.							
<table border="1"> <tr> <td>1</td> <td>48</td> <td>49</td> <td>96</td> </tr> </table>				1	48	49	96
1	48	49	96				
GEOPHONE INTERVAL 40 MT. GEOPHONE GROUP 18 GEOPHONE NO. SENSOR SW47 10HZ. ENERGY SOURCE DYNAMITE SHOT HOLES/SP 1 AVERAGE CHARGE/SP 16 KG. AVERAGE SHOT/DEPTH 30 MT.							

PROCESSING

EDIT F.P. (GEOPHONE AMPLITUDE)  
 PREFILTER 10HZ. 24DB 60HZ 48DB  
 D.B.S. MIN. PHASE INV. FILT. 24-160MS  
 FIELD STATIC CORRECTIONS  
 VELOCITY ANALYSIS  
 NMO CORRECTIONS (FROM SURFACE)  
 1200 X STACK  
 T.V.F.

T.V.F. PARAMETERS

HIGHER ZONE	14HZ	3600	50HZ	7200
HIGHER ZONE	12HZ	3600	44HZ	7200
MIDDLE ZONE	10HZ	3600	40HZ	7200
MIDDLE ZONE	8HZ	3600	30HZ	7200
LOWER ZONE	8HZ	3600	30HZ	7200



ANALYST