



OSSERVATORIO GEOFISICO SPERIMENTALE - TRIESTE

SEISMIC SECTION

CREW : TD-143

SEISMIC REFLECTION SURVEY

FOR

MINERARIA TEXAS ITALIANA S.p.A.

PROJECT

S. SEVERO

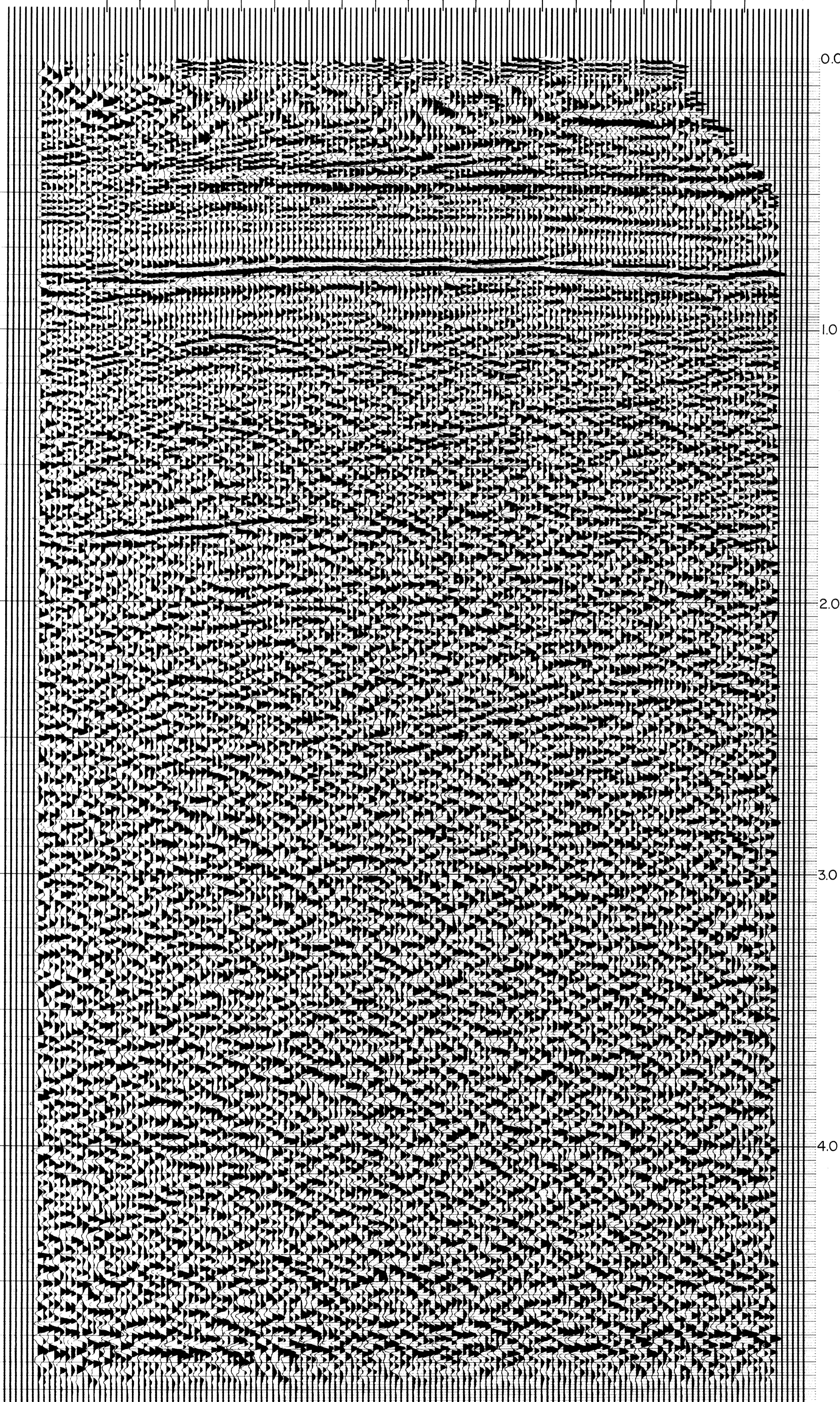
LINE SE-2a

SOUTHEAST →

SE-2b

SE-4

112 110 105 100 95 93



Supervisor : Prof. Icilio Finetti  
Party Chief : Luciano Zampieri

Trieste, December 31, 1971

Report n°  
71457

Enclosure n° 5  
TC - 1134

RECORDING:

O.G.S. - PARTY TD-143

Recording instrument: T.I. DFS/10000  
Sample rate: 2 msec.  
Record length: 5 sec  
Spread length: 1200 m  
Number of traces: 24  
Group interval: 50 m  
Geoph/group: 24  
Coverage: 4 fold  
Recording filters: 12/36-70/24

PROCESSING:

O.G.S./DIGICON - BARI

Gain removal  
Spherical divergence correction  
Trace edit  
Digital AGC  
CVS Velocity analysis S.P. 95-101  
Wide band normal moveout correction  
Datum statics: datum plane = sea level  
Band pass filters:

Low High Slope  
8 64 3db cycle

Digital AGC  
Digistat automatic statics  
4 Fold gather and stack  
T.V. Predictive deconvolution  
T.V. FILTER

Low High Time Slope  
18 50 0.1 3 db/cycle  
12 46 0.4 3 db/cycle  
10 42 1.0 3 db/cycle  
10 30 40 3 db/cycle

Digital AGC  
Film display

Velocity Functions	Reflection Time	Average velocity
S.P. 91-100	0	2300
	.2	2350
	.45	2400
	.65	2496
	.80	2589
	1.2	2735
	2.9	2987
5.0	4245	
S.P. 114	0	2300
	.357	2389
	.489	2439
	.611	2496
	.879	2668
	1.200	2735
	2.900	2987
5.000	4245	