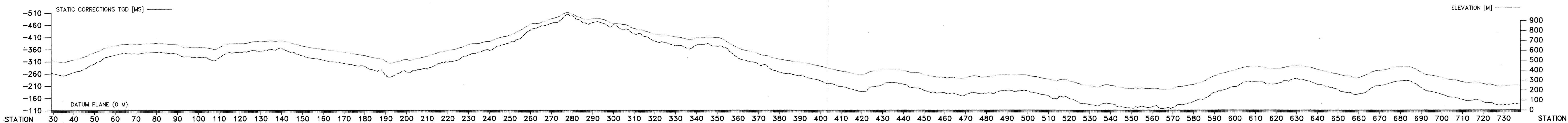


CBF-08-91

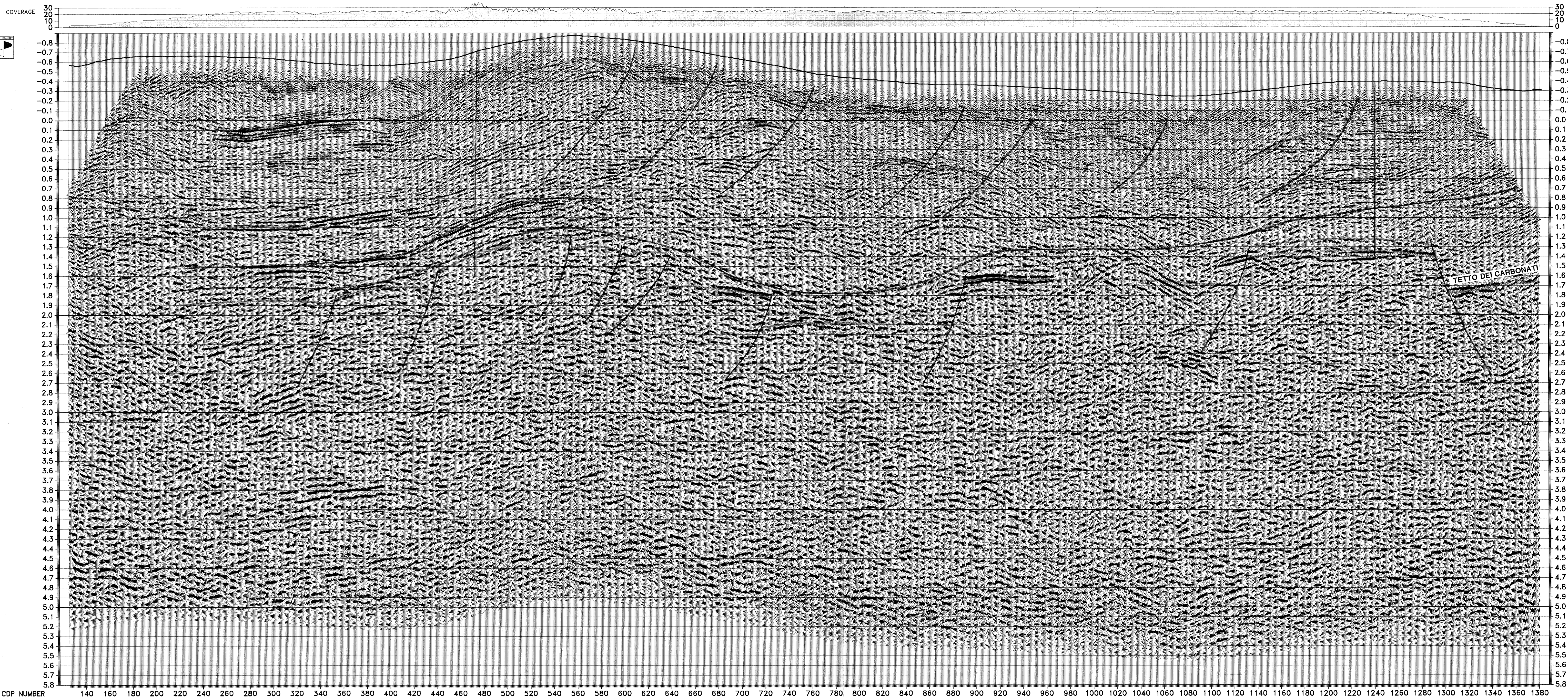
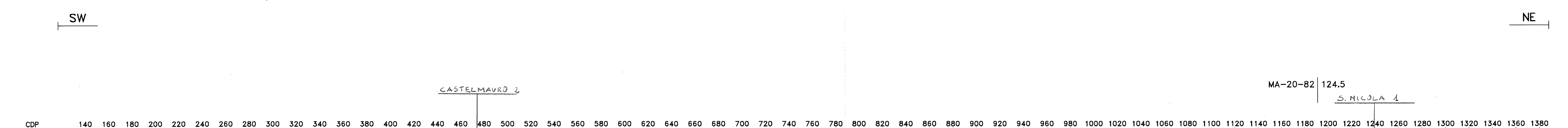


Time	Vrms	V1st
ms	m/s	m/s
100	2450	2450
200	2500	2500
300	2550	2550
400	2600	2600
500	2650	2650
600	2700	2700
700	2750	2750
800	2800	2800
900	2850	2850
1000	2900	2900
1100	2950	2950
1200	3000	3000
1300	3050	3050
1400	3100	3100
1500	3150	3150
1600	3200	3200
1700	3250	3250
1800	3300	3300
1900	3350	3350
2000	3400	3400
2100	3450	3450
2200	3500	3500
2300	3550	3550
2400	3600	3600
2500	3650	3650
2600	3700	3700
2700	3750	3750
2800	3800	3800
2900	3850	3850
3000	3900	3900
3100	3950	3950
3200	4000	4000
3300	4050	4050
3400	4100	4100
3500	4150	4150
3600	4200	4200
3700	4250	4250
3800	4300	4300
3900	4350	4350
4000	4400	4400
4100	4450	4450
4200	4500	4500
4300	4550	4550
4400	4600	4600
4500	4650	4650
4600	4700	4700
4700	4750	4750
4800	4800	4800
4900	4850	4850
5000	4900	4900
5100	4950	4950
5200	5000	5000
5300	5050	5050
5400	5100	5100
5500	5150	5150
5600	5200	5200
5700	5250	5250
5800	5300	5300
5900	5350	5350
6000	5400	5400
6100	5450	5450
6200	5500	5500
6300	5550	5550
6400	5600	5600
6500	5650	5650
6600	5700	5700
6700	5750	5750
6800	5800	5800
6900	5850	5850
7000	5900	5900
7100	5950	5950
7200	6000	6000
7300	6050	6050

Time	Vrms	V1st
ms	m/s	m/s
100	2280	2280
200	2330	2330
300	2380	2380
400	2430	2430
500	2480	2480
600	2530	2530
700	2580	2580
800	2630	2630
900	2680	2680
1000	2730	2730
1100	2780	2780
1200	2830	2830
1300	2880	2880
1400	2930	2930
1500	2980	2980
1600	3030	3030
1700	3080	3080
1800	3130	3130
1900	3180	3180
2000	3230	3230
2100	3280	3280
2200	3330	3330
2300	3380	3380
2400	3430	3430
2500	3480	3480
2600	3530	3530
2700	3580	3580
2800	3630	3630
2900	3680	3680
3000	3730	3730
3100	3780	3780
3200	3830	3830
3300	3880	3880
3400	3930	3930
3500	3980	3980
3600	4030	4030
3700	4080	4080
3800	4130	4130
3900	4180	4180
4000	4230	4230
4100	4280	4280
4200	4330	4330
4300	4380	4380
4400	4430	4430
4500	4480	4480
4600	4530	4530
4700	4580	4580
4800	4630	4630
4900	4680	4680
5000	4730	4730
5100	4780	4780
5200	4830	4830
5300	4880	4880
5400	4930	4930
5500	4980	4980
5600	5030	5030
5700	5080	5080
5800	5130	5130
5900	5180	5180
6000	5230	5230
6100	5280	5280
6200	5330	5330
6300	5380	5380
6400	5430	5430
6500	5480	5480
6600	5530	5530
6700	5580	5580
6800	5630	5630
6900	5680	5680
7000	5730	5730
7100	5780	5780
7200	5830	5830
7300	5880	5880

Time	Vrms	V1st
ms	m/s	m/s
100	2300	2300
200	2350	2350
300	2400	2400
400	2450	2450
500	2500	2500
600	2550	2550
700	2600	2600
800	2650	2650
900	2700	2700
1000	2750	2750
1100	2800	2800
1200	2850	2850
1300	2900	2900
1400	2950	2950
1500	3000	3000
1600	3050	3050
1700	3100	3100
1800	3150	3150
1900	3200	3200
2000	3250	3250
2100	3300	3300
2200	3350	3350
2300	3400	3400
2400	3450	3450
2500	3500	3500
2600	3550	3550
2700	3600	3600
2800	3650	3650
2900	3700	3700
3000	3750	3750
3100	3800	3800
3200	3850	3850
3300	3900	3900
3400	3950	3950
3500	4000	4000
3600	4050	4050
3700	4100	4100
3800	4150	4150
3900	4200	4200
4000	4250	4250
4100	4300	4300
4200	4350	4350
4300	4400	4400
4400	4450	4450
4500	4500	4500
4600	4550	4550
4700	4600	4600
4800	4650	4650
4900	4700	4700
5000	4750	4750
5100	4800	4800
5200	4850	4850
5300	4900	4900
5400	4950	4950
5500	5000	5000
5600	5050	5050
5700	5100	5100
5800	5150	5150
5900	5200	5200
6000	5250	5250
6100	5300	5300
6200	5350	5350
6300	5400	5400
6400	5450	5450
6500	5500	5500
6600	5550	5550
6700	5600	5600
6800	5650	5650
6900	5700	5700
7000	5750	5750
7100	5800	5800
7200	5850	5850
7300	5900	5900

Time	Vrms	V1st
ms	m/s	m/s
100	2140	2140
200	2190	2190
300	2240	2240
400	2290	2290
500	2340	2340
600	2390	2390
700	2440	2440
800	2490	2490
900	2540	2540
1000	2590	2590
1100	2640	2640
1200	2690	2690
1300	2740	2740
1400	2790	2790
1500	2840	2840
1600	2890	2890
1700	2940	2940
1800	2990	2990
1900	3040	3040
2000	3090	3090
2100	3140	3140
2200	3190	3190
2300	3240	3240
2400	3290	3290
2500	3340	3340
2600	3390	3390
2700	3440	3440
2800	3490	3490
2900	3540	3540
3000	3590	3590
3100	3640	3640
3200	3690	3690
3300	3740	3740
3400	3790	3790
3500	3840	3840
3600	3890	3890
3700	3940	3940
3800	3990	3990
3900	4040	4040
4000	4090	4090
4100	4140	4140
4200	4190	4190
4300	4240	4240
4400	4290	4290
4500	4340	4340
4600	4390	4390
4700	4440	4440
4800	4490	4490
4900	4540	4540
5000	4590	4590
5100	4640	4640
5200	4690	4690
5300	4740	4740
5400	4790	4790
5500	4840	4840
5600	4890	4890
5700	4940	4940
5800	4990	4990
5900	5040	5040
6000	5090	5090
6100	5140	5140
6200	5190	5190
6300	5240	5240
6400	5290	5290
6500	5340	5340
6600	5390	5390
6700	5440	5440
6800	5490	5490
6900	5540	5540
7000	5590	5590
7100	5640	5640
7200	5690	5690
7300	5740	5740



RECORDING

FIELD PARTY: SIAG S.P.A.
 SUPERVISOR: MOELLE / WALTHER
 CONTRACTOR: SIAG S.P.A.

RECORDING PERIOD: 08.05.1991-22.05.1991
 RECORDING SYSTEM: SEIS-3 368, 144 CHANNELS
 TAPE FORMAT: SEIS-3 TRACK, 6250 BPI
 POLARITY OF SYSTEM: SEIS-CODE 001

SUBSURFACE COVERAGE: 24 FOLD
 RECORD LENGTH: 6 SEC
 SAMPLING RATE: 2 MSEC
 FILTER: LOW-CUT 12 HZ 18 DB/OCT
 HIGH-CUT 178 HZ 72 DB/OCT
 NOTCH OUT

GAIN CONTROL: CONSTANT GAIN
 RECEIVER TYPE: SM 4 (10 HZ)
 NO. OF GROUPS: 144, SPACING 30 M
 GROUP LENGTH 55 M
 24 RECEIVERS PER GROUP

RECEIVER ARRAY: TWO GROUPS OF 12 GEOPHONES

EMITTER ARRAY: SINGLE HOLE SHOT
 ENERGY SOURCE: EXPLOSIVE
 AVERAGE SPACING: 90 M
 CHARGE: 10 KG
 CHARGE DEPTH: 25 M

EMITTER RECEIVER CONFIGURATION:
 SW → NE
 1 → 72 → 144
 ← 2130 M → ← 45 M → ← 45 M → ← 2130 M →

PROCESSING

INPUT CREW: MOELLE / WALTHER
 SUPERVISOR: MOELLE / WALTHER
 PRAKLA-SEISMOS PROCESSING NO. 91 5 137 50

1 INPUT: TAPE FORMAT: SEIS-3, 9 TRACK, 6250 BPI
 2 SAMPLING RATE: 2 MSEC, 144 CHANNELS, PROCESSING LENGTH 6 SEC
 3 GAIN REMOVAL
 4 RESAMPLING TO 4 MSEC (ANTI-ALIAS FILTER 90 HZ)
 5 CDP SORT (MEANDER)
 6 CORRECTION OF SPHERICAL DIVERGENCE
 7 STATIONARY FREQUENCY FILTER
 8 DECONVOLUTION: 100% TIME LOW-CUT HIGH-CUT
 0 - 6000 HZ DB/OCT 10 24 70 48
 TYPE SURFACE CONSISTENT, OFFSET DEPENDENT, PREMULTIPLYING FACTOR 100, OPERATOR LENGTH: 200 MS, 1 GATE

TRAVEL TIMES
 45 M → 175 M
 100-3000 1100-3200
 9 STATIC CORRECTIONS (CALCULATED BY THE FIELD PARTY)
 CORRECTION VELOCITY: 2000 M/SEC, DATUM PLANE: 0 M
 RECALCULATED FOR INTERMEDIATE TIME LEVEL (ITL)
 10 INCL. AUTOM. RESIDUAL STATICS, 4 ITERATIONS
 11 DYNAMIC CORRECTIONS (AFTER ANALYSES)
 12 NORMALIZATION (5 GATES, SEE TABLE)
 13 HORIZONTAL STACKING: 24 FOLD
 14 CORRECTION FROM INTERMEDIATE TIME LEVEL TO DATUM PLANE 0 M, CORRECTION VELOCITY: 2000 M/SEC
 15 NOISE REDUCTION: 800 MSEC
 16 FX DECONVOLUTION
 17 COHERENCY FILTER
 18 300-200 MODEL, MAX. DIP = +/- 8 TO 6 MS/TRACE
 19 TIME-VARIANT FREQUENCY FILTER
 200-200 MODEL, MAX. DIP = +/- 8 TO 6 MS/TRACE
 MSEC LOW-CUT HIGH-CUT
 800 12 24 60 48
 1400 12 24 50 48
 2400 10 24 40 48

10 NORMALIZATION (6 GATES, SEE TABLE)
 20 DISPLAY: SCALE 1:25000
 S = 5 CM, TRACE SPACING: 0.6 MM
 POLARITY: S-SEG (COMPRESSIONAL EVENTS = WHITE)

WA27713/08/91 DATE: 23.08.91
 TIMES REFER TO INTERMEDIATE TIME LEVEL

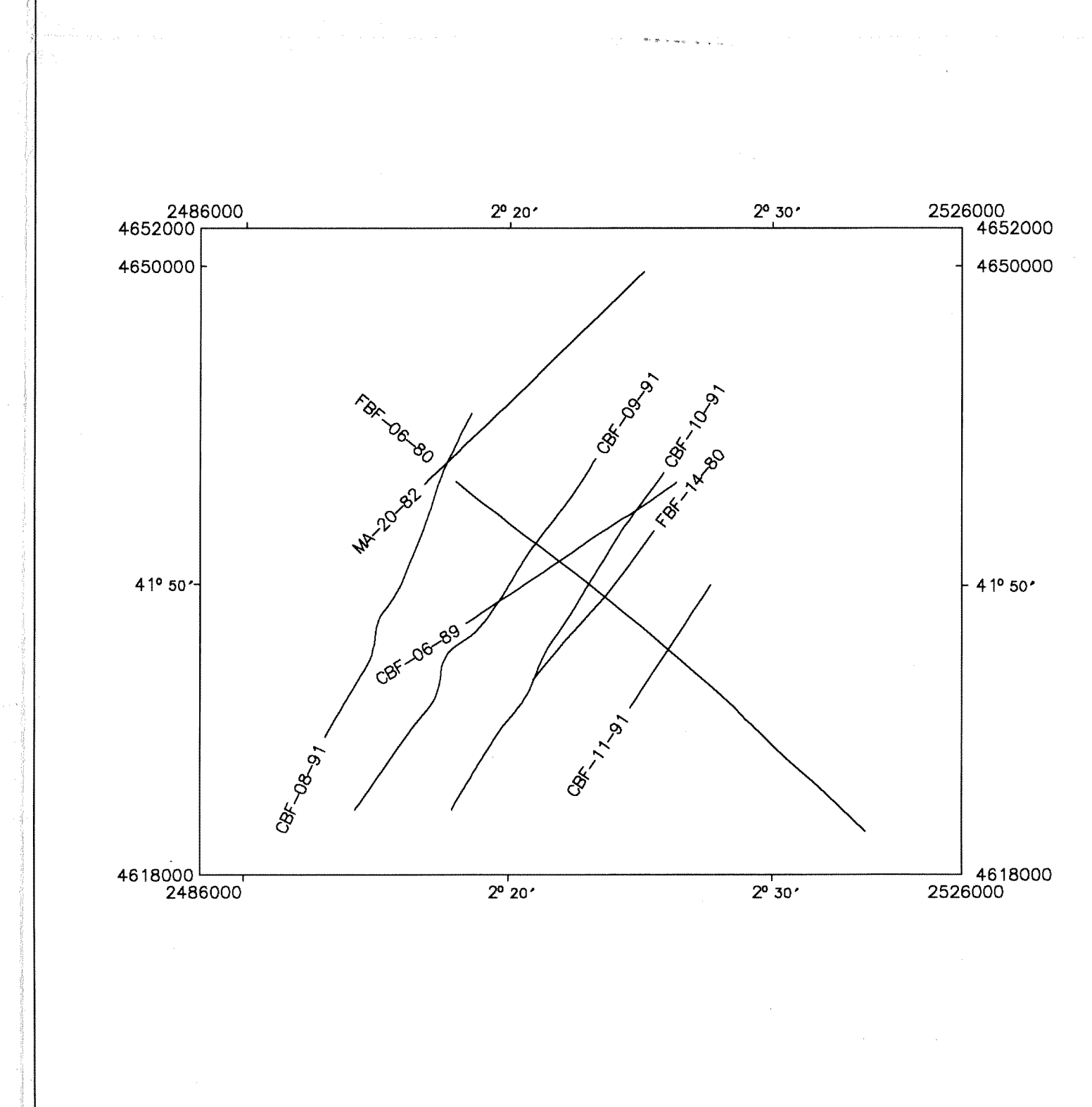
FINA ITALIANA S.P.A. ITALY

S.1:25000

ALL 3

915 137

PRAKLA-SEISMOS



NORMALIZATION BEFORE STACK

GATE LENGTH [MSEC]	CENTRE [MSEC]
1	400
2	600
3	1700
4	2000
5	2000

NORMALIZATION AFTER STACK

GATE LENGTH [MSEC]	CENTRE [MSEC]
1	200
2	300
3	400
4	500
5	600
6	700
7	800
8	1000
9	1000
10	1000

TIMES REFER TO INTERMEDIATE TIME LEVEL