

AGIP MINERARIA
 COUNTRY : ITALY
 PROSPECT : SAN FELE

LINE SFE-76-03
 SHOTPOINTS 994 TO 352
 SOUTH-EAST

FILTERED STACK
 WITH RESIDUAL STATICS

02 FEB 1977
 0192XAY NO 1492
 PARTY 3882-141504

GEOPHYSICAL SERVICE INTERNATIONAL
 10000 ARCADE DRIVE
 WASHINGTON, D.C. 20048
 TEL (202) 638-1500
 CABLE: GEOPHYSICAL SERVICE INTL
 TEL TELEX: 463 15000 20 24 28 255
 CABLE ADDRESS: GEOPHYSICAL SERVICE INTL

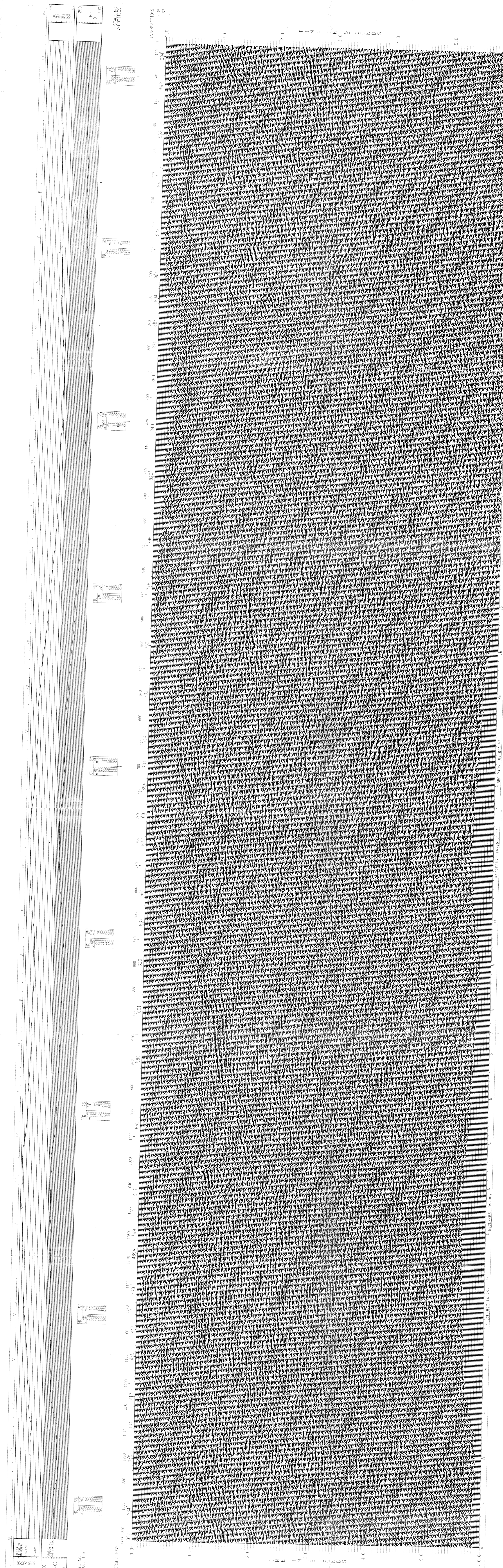
FIELD RECORDING DATA
 DATE: 02 FEB 1977
 AREA: ITALY
 PROJECT: AGIP MINERARIA
 LINE: SFE-76-03
 SURVEY: 0192XAY NO 1492
 PARTY: 3882-141504
 TIME: 10:00
 OPERATOR: J. G. B. / J. G. B.

GEOPHONE ARRAY
 GAIN: 100
 CHANNELS: 24

SERIAL DIAGRAM
 SP OF PROGRAM: SFP-PAPER-INDEX
 TIME: 10:00

PROCESSING SEQUENCE
 1. ORIGINAL RECORDS - INPUT RECORDS
 2. GEOPHONE CHANNELS - INPUT RECORDS
 3. CHANNELS - INPUT RECORDS
 4. THE ORIGINAL RECORDS
 5. WITH HORIZONTAL CORRECTION
 6. WITH CORRECTION
 7. WITH CORRECTION
 8. WITH CORRECTION
 9. WITH CORRECTION
 10. WITH CORRECTION
 11. WITH CORRECTION

BIGEPLAT
 DISPLAY GAIN: 100
 TIME: 10:00



STACKEd VELOCITIES
 INTERSECTIONS
 SP