

COMPANY: AGIP
 WELL: BIMMISCA 1
 FIELD: BIMMISCA
 NATION: ITALY
 LOCATION: LAND SICILY
 SEC: TWP: RGE:
 LATITUDE: 36 48 34
 LONGITUDE: 02 37 28
 PERMANENT DATUM: MSL ELEVATIONS-
 ELEV. OF PERM. DATUM: SVR KB: 31.3 M
 LOG MEASURED FROM: DF DF: 31.3 M
 31.3 M ABOVE PERM. DATUM GL: 25.0 M
 DRLG. MEASURED FROM: DF
 PROGRAM TAPE NO: 26.4
 SERVICE ORDER NO:

DATE: 3 FEB 85
 RUN NO: 1
 DEPTH-DRILLER: 3160.0 M
 DEPTH-LOGGER: 3160.0 M
 BTM LOG INTERVAL: 3160.0 M
 TDP LOG INTERVAL: 31.0 M
 CASING-DRILLER: 2775 M
 CASING-LOGGER: 2775 M
 CASING: 9 5/8"
 HEIGHT: 43.50 LB/F
 BIT SIZE: 12 1/2" 8 1/2"
 DEPTH: 2814 M 3160 M

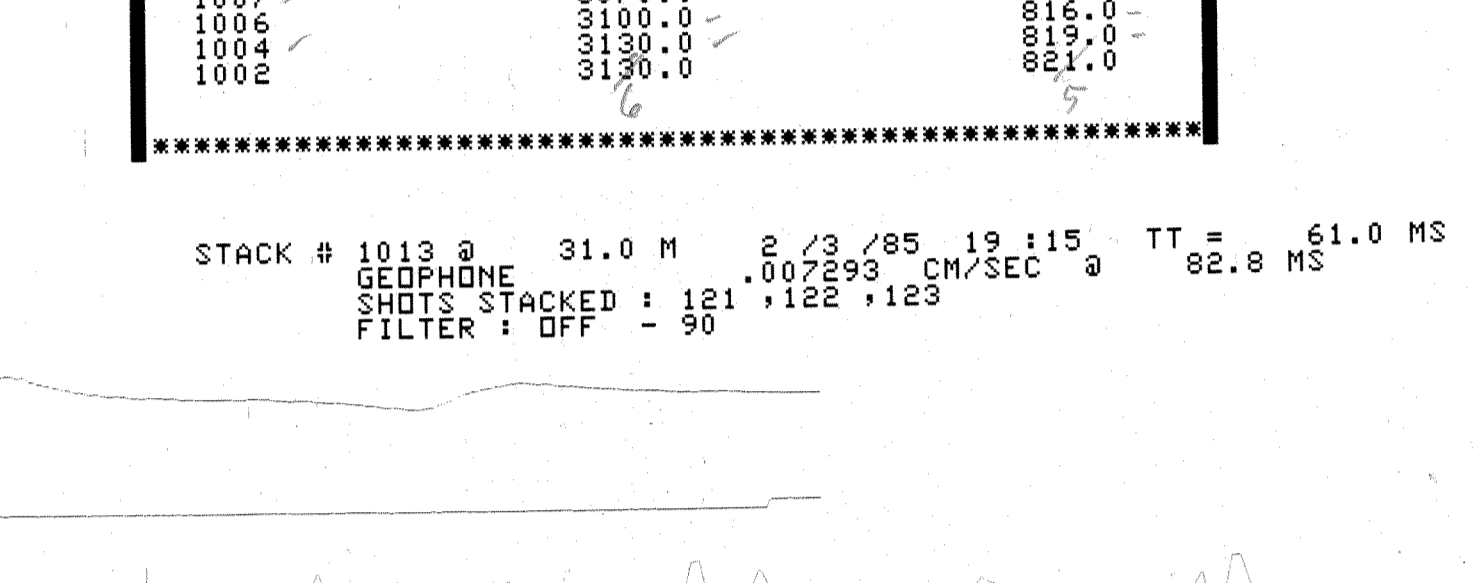
TYPE FLUID IN HOLE: A. R.
 DENSITY: 1050 K/M3
 VISCOSITY: 144. S
 PH: 10.0
 FLUID LOSS: 9.0 C3
 SOURCE OF SAMPLE: FLOWLINE
 RM: 1.210 DHMM AT 25.2 DEGC
 RMF: 1.375 DHMM AT 25.2 DEGC
 SRCR: 1.420 DHMM AT 25.2 DEGC
 RMC AT BHT: PRESS / PRESS
 RM AT BHT: .654 DHMM AT 65.0 DEGC
 RMC AT BHT: .743 DHMM AT 65.0 DEGC
 RMC AT BHT: .767 DHMM AT 65.0 DEGC
 TIME CIRC. STOPPED: 03:30 3/2
 TIME LOGGER ON BTH: 10:45 3/2
 MAX. REC. TEMP: 65.0 DEGC
 LOGGING UNIT NO: 2719
 LOGGING UNIT LOC: SVR
 RECORDED BY: ROSSI/IMPERIALE/KATER
 WITNESSED BY: TONIONI

REMARKS:
 2 X 200 CU IN GUNS USED, 110 BAR, AIR SOURCE NITROGEN.
 PIT AT 63M 105 DEG (MAGNETIC).
 GUN DEPTH 5M BELOW G.L., HYDRO 5.8M BELOW G.L.
 LOSS OF CIRCULATION AT 2908 M
 LONG OPERATING TIME WHILST WAITING FOR WESTERN GEO TO
 RECORD GEOPHONE SIGNAL.
 PLAYBACK WITH SHOTS RESTACKED AND TRANSIT TIMES COMPUTED
 MANUALLY WHERE NECESSARY.

EQUIPMENT NUMBERS-
 WSC-A 978 HPS-AB 900 WSA-AB 975 CAC-B 975
 WSM-AB 743 WDM-AB 845 WSI-A 781

ALL INTERPRETATIONS ARE OPINIONS BASED ON INFERENCE FROM ELECTRICAL OR
 OTHER MEASUREMENTS AND WE CANNOT, AND DO NOT GUARANTEE THE ACCURACY OR
 CORRECTNESS OF ANY INTERPRETATIONS, AND WE SHALL NOT, EXCEPT IN THE CASE
 OF GROSS OR WILLFUL NEGLIGENCE ON OUR PART, BE LIABLE OR RESPONSIBLE FOR
 ANY LOSS, COSTS, DAMAGES OR EXPENSES INCURRED OR SUSTAINED BY ANYONE
 RESULTING FROM ANY INTERPRETATION MADE BY ANY OF OUR OFFICERS, AGENTS OR
 EMPLOYEES. THESE INTERPRETATIONS ARE ALSO SUBJECT TO OUR GENERAL TERMS
 AND CONDITIONS AS SET OUT IN OUR CURRENT PRICE SCHEDULE.

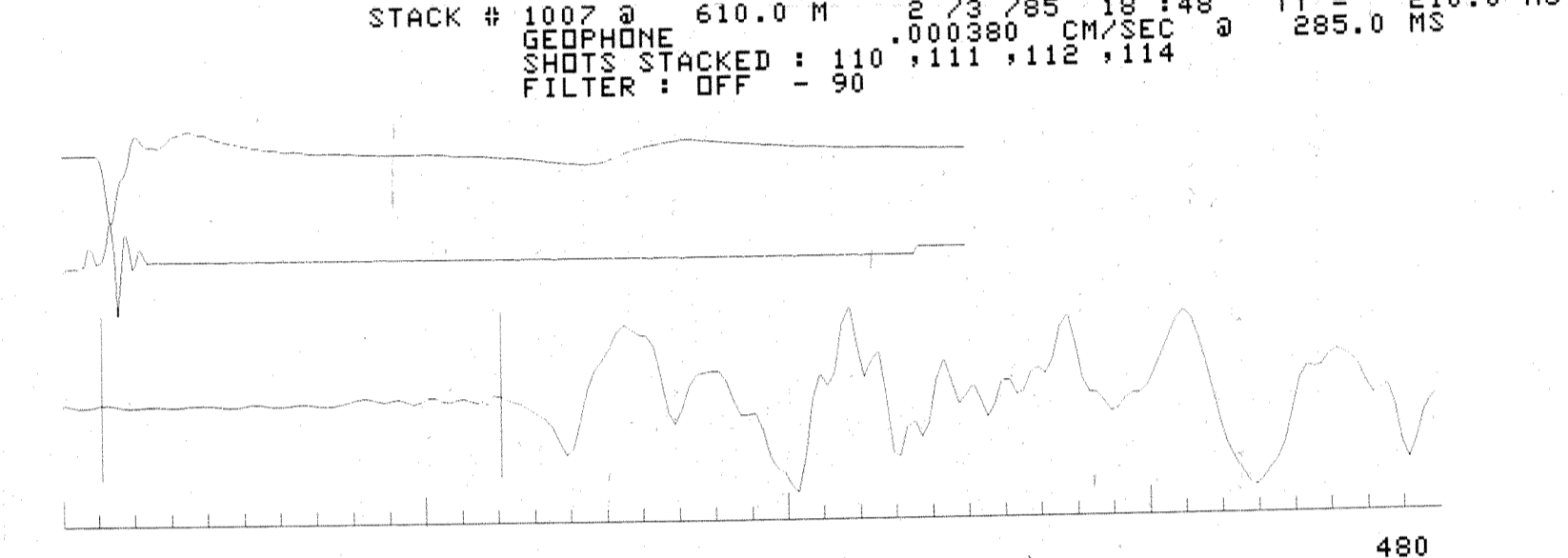
CP 26.4 FILE 106
 DATA ACQUIRED 00- 00 00:00
 MST DEPTH VS TTIME CURVE



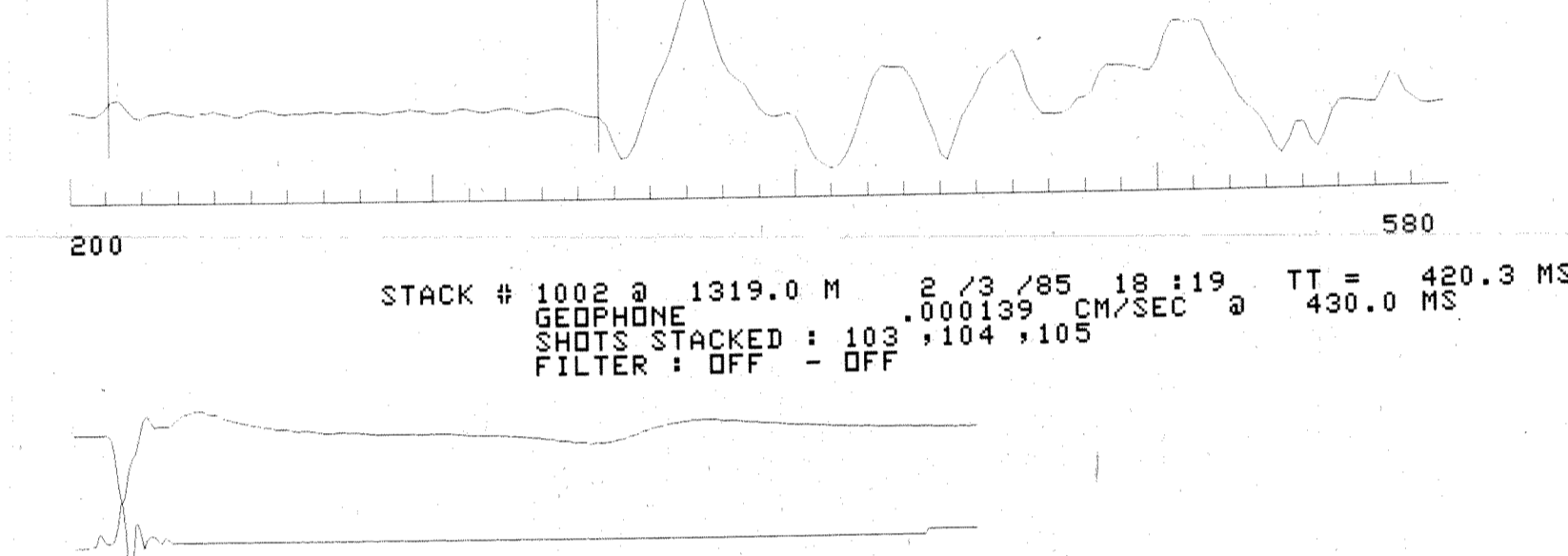
MST DEPTH VS TTIME SUMMARY

STACK NBR	DEPTH (M)	TTIME (MS)
1013	31.0	61.0
1011	305.0	134.0
1009	451.0	175.0
1007	610.0	210.0
1004	1037.0	335.0
1002	1319.0	420.3
1001	1567.0	470.0
1023	1991.0	585.0
1022	2279.0	655.5
1021	2681.0	739.4
1020	2860.0	780.0
1018	2890.0	780.0
1016	2920.0	784.0
1015	2949.0	787.0
1013	2980.0	790.0
1011	3010.0	795.0
1009	3040.0	798.3
1007	3070.0	813.0
1004	3100.0	819.0
1002	3130.0	821.0

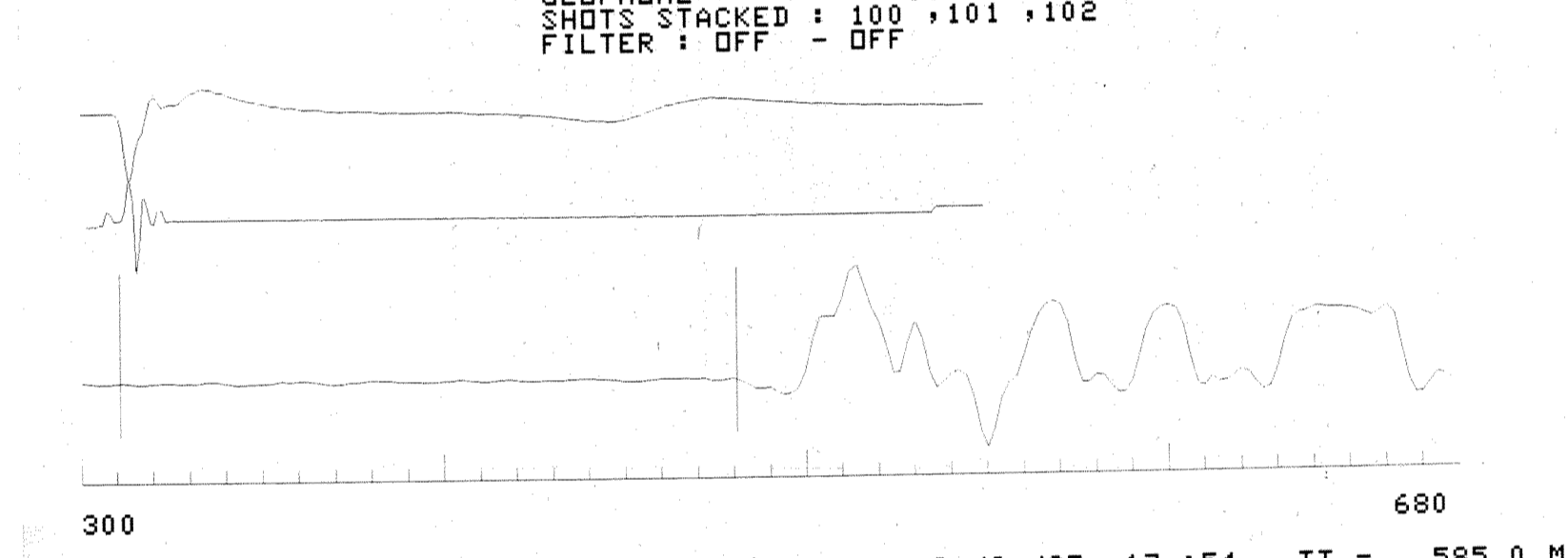
STACK # 1013 @ 31.0 M 2 / 3 / 85 19 : 15 TT = 61.0 MS
 GEOPHONE .00638 CM/SEC @ 82.8 MS
 SHOTS STACKED : 121 , 122 , 123
 FILTER : OFF - 90



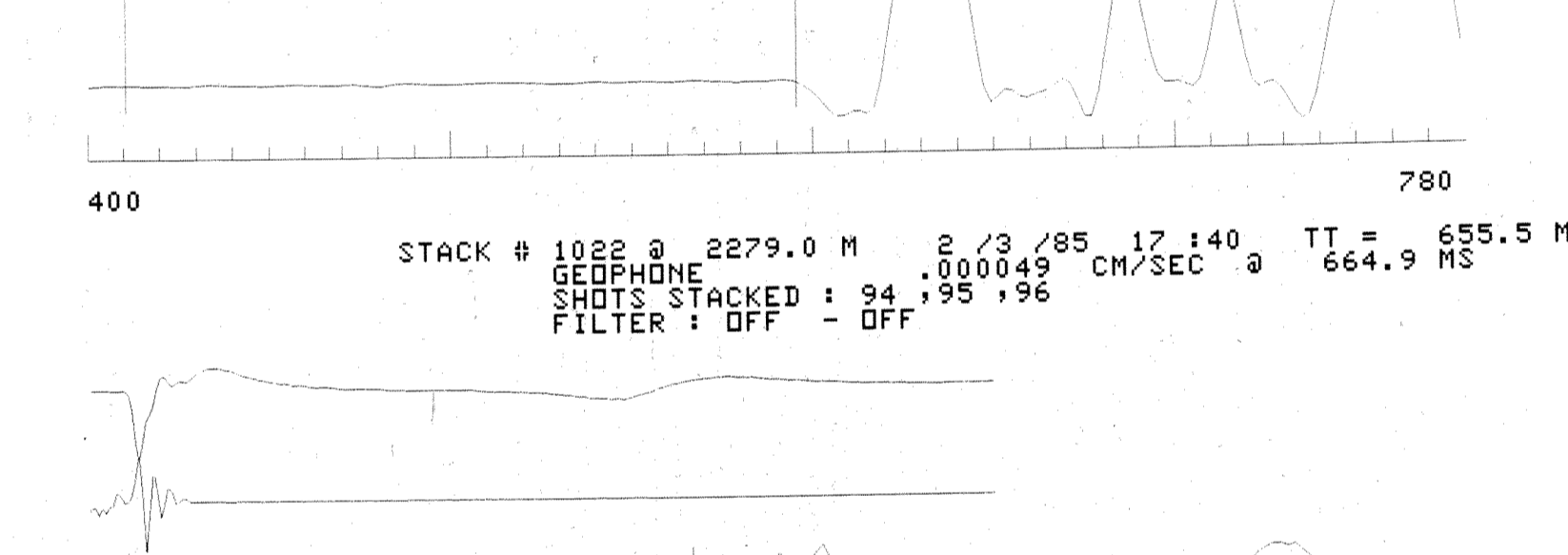
STACK # 1011 @ 305.0 M 2 / 3 / 85 19 : 17 TT = 134.0 MS
 GEOPHONE .001339 CM/SEC @ 146.4 MS
 SHOTS STACKED : 118 , 119 , 120
 FILTER : OFF - 90



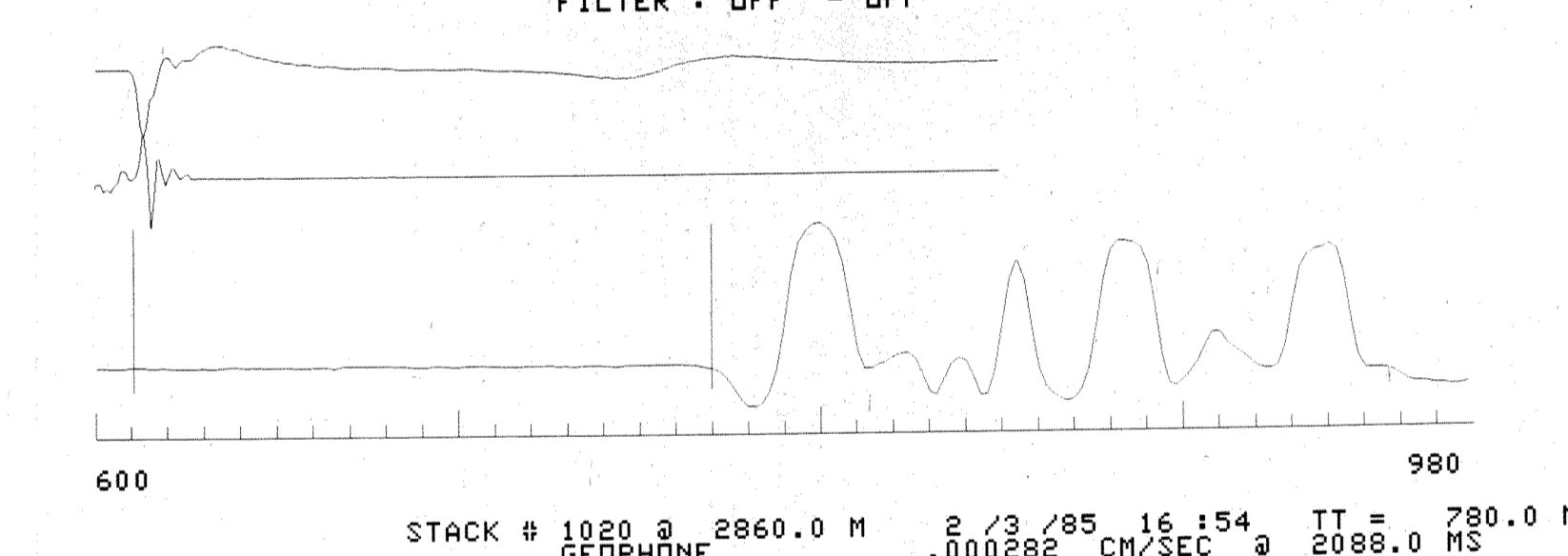
STACK # 1009 @ 451.0 M 2 / 3 / 85 18 : 159 TT = 175.0 MS
 GEOPHONE .001097 CM/SEC @ 192.0 MS
 SHOTS STACKED : 115 , 116 , 117
 FILTER : OFF - 90



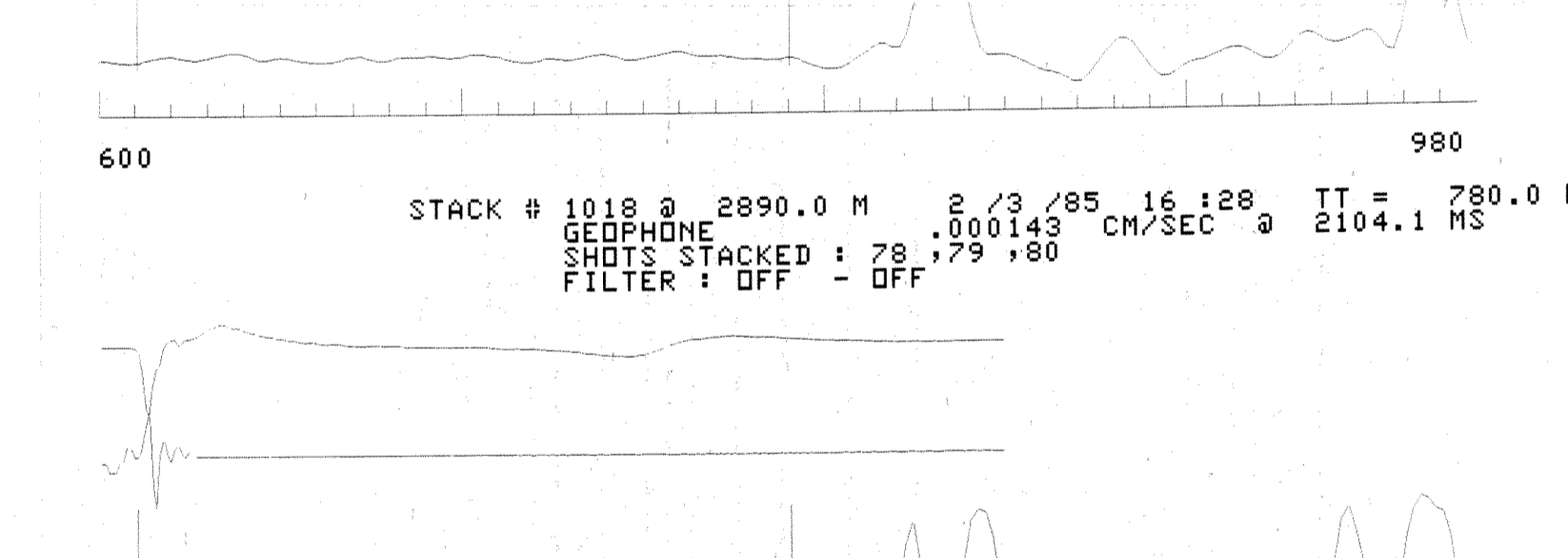
STACK # 1007 @ 610.0 M 2 / 3 / 85 18 : 148 TT = 210.0 MS
 GEOPHONE .000380 CM/SEC @ 285.0 MS
 SHOTS STACKED : 110 , 111 , 112 , 114
 FILTER : OFF - 90



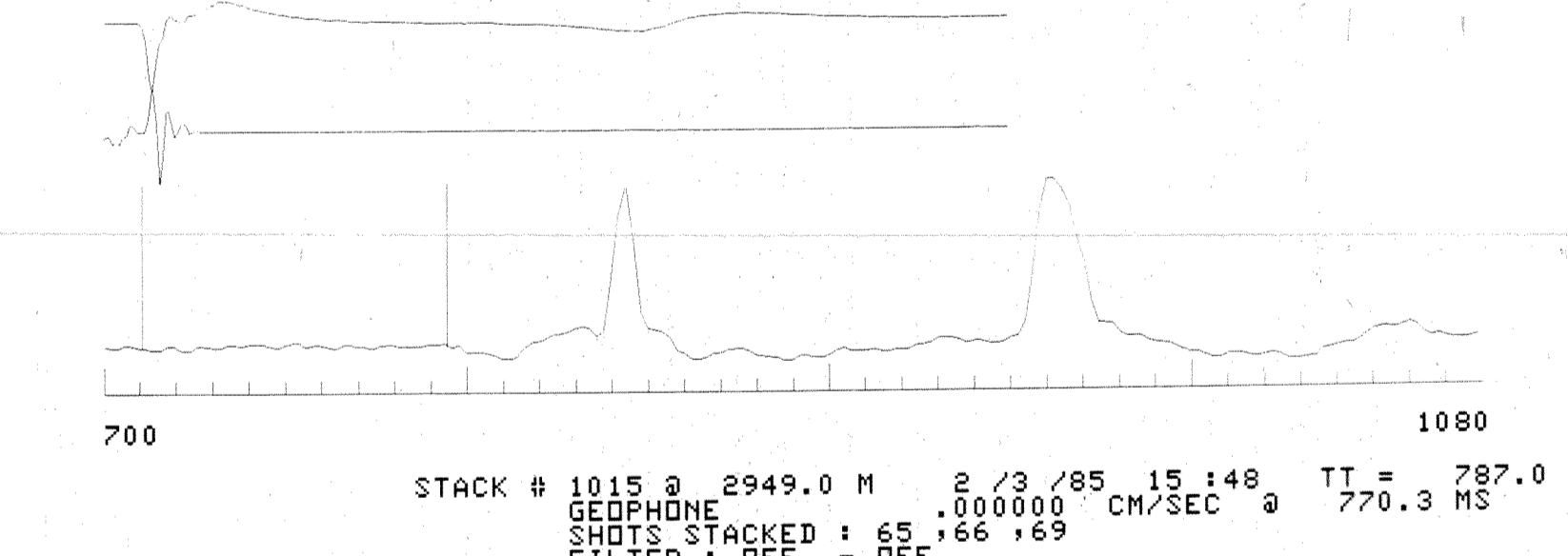
STACK # 1004 @ 1037.0 M 2 / 3 / 85 18 : 130 TT = 335.0 MS
 GEOPHONE .001097 CM/SEC @ 813.8 MS
 SHOTS STACKED : 106 , 107 , 108
 FILTER : OFF - OFF



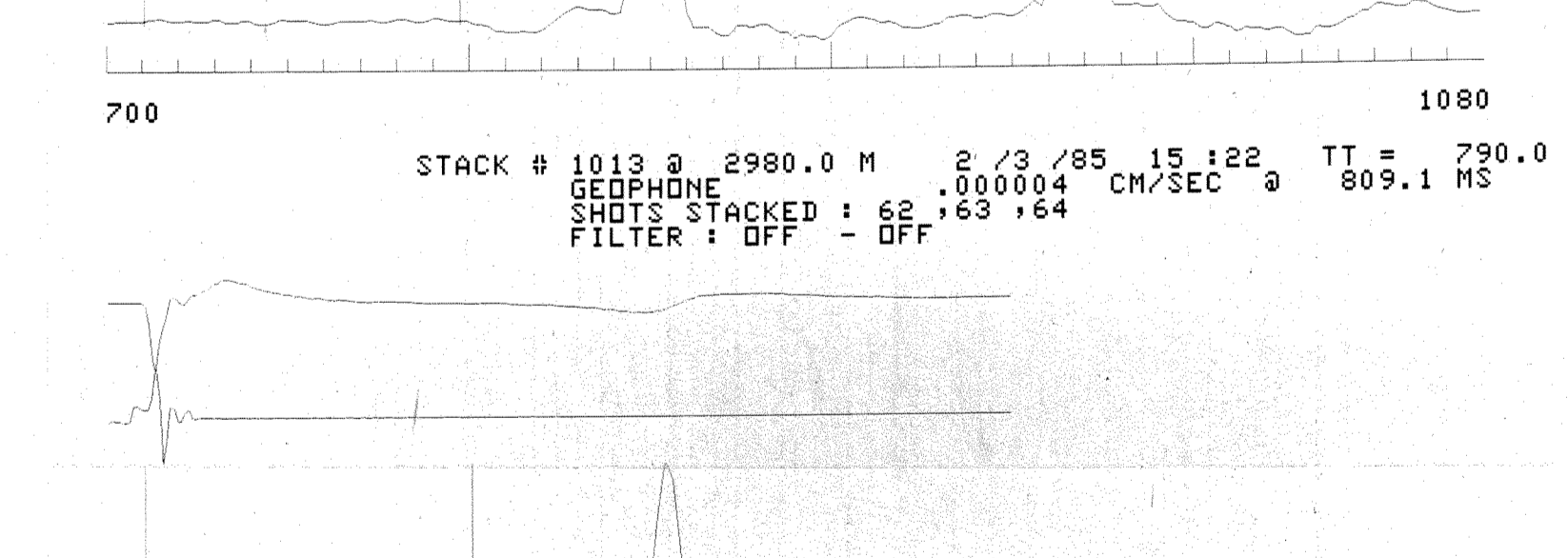
STACK # 1002 @ 1319.0 M 2 / 3 / 85 18 : 119 TT = 420.3 MS
 GEOPHONE .001339 CM/SEC @ 430.0 MS
 SHOTS STACKED : 103 , 104 , 105
 FILTER : OFF - OFF



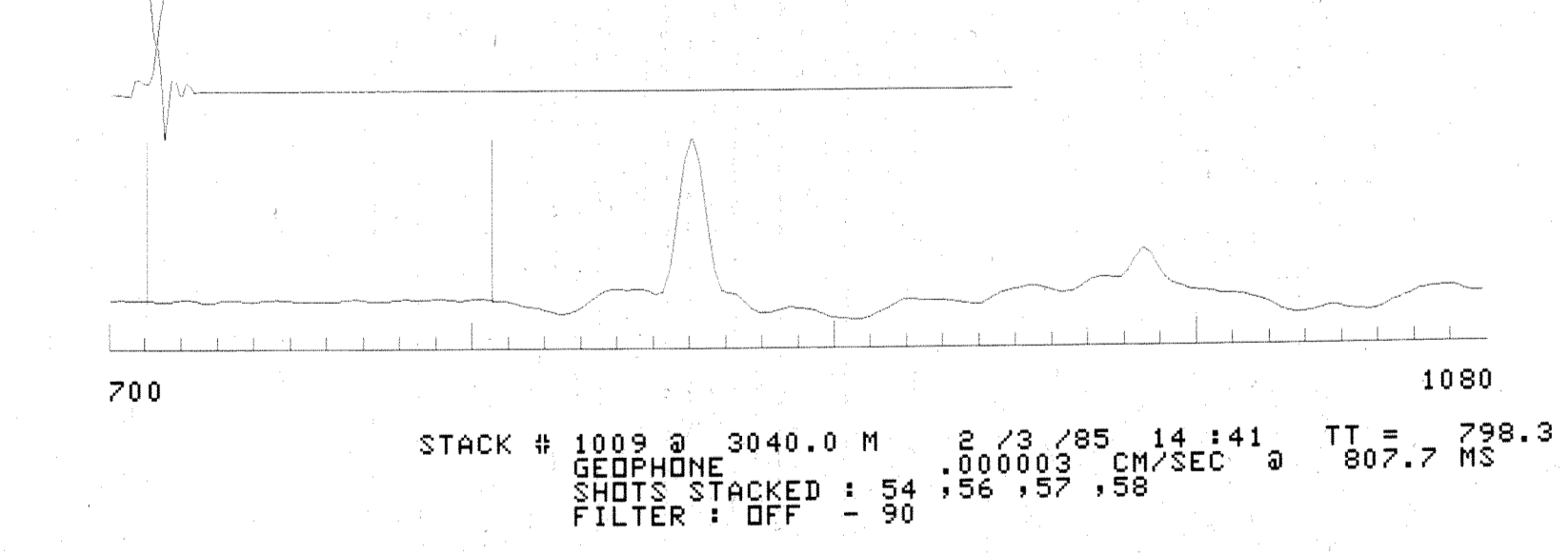
STACK # 1001 @ 1567.0 M 2 / 3 / 85 18 : 16 TT = 470.0 MS
 GEOPHONE .000555 CM/SEC @ 1191.5 MS
 SHOTS STACKED : 100 , 101 , 102
 FILTER : OFF - OFF



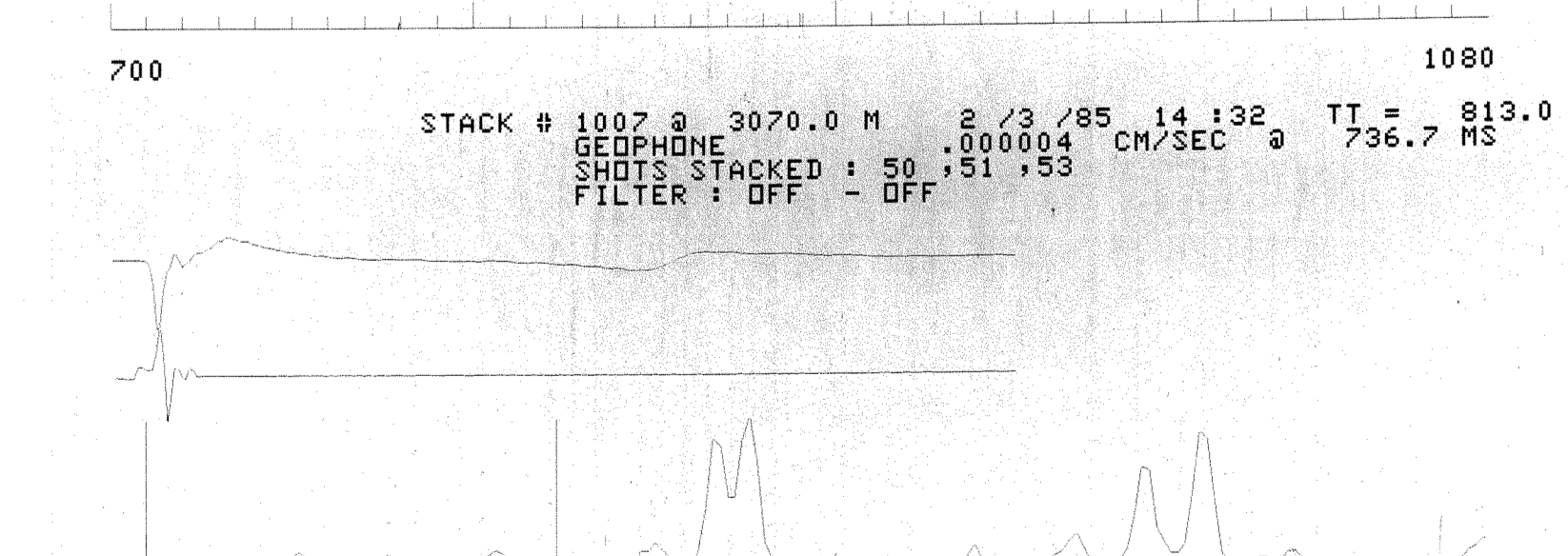
STACK # 1023 @ 1991.0 M 2 / 3 / 85 17 : 54 TT = 585.0 MS
 GEOPHONE .000046 CM/SEC @ 723.5 MS
 SHOTS STACKED : 97 , 98 , 99
 FILTER : OFF - 90



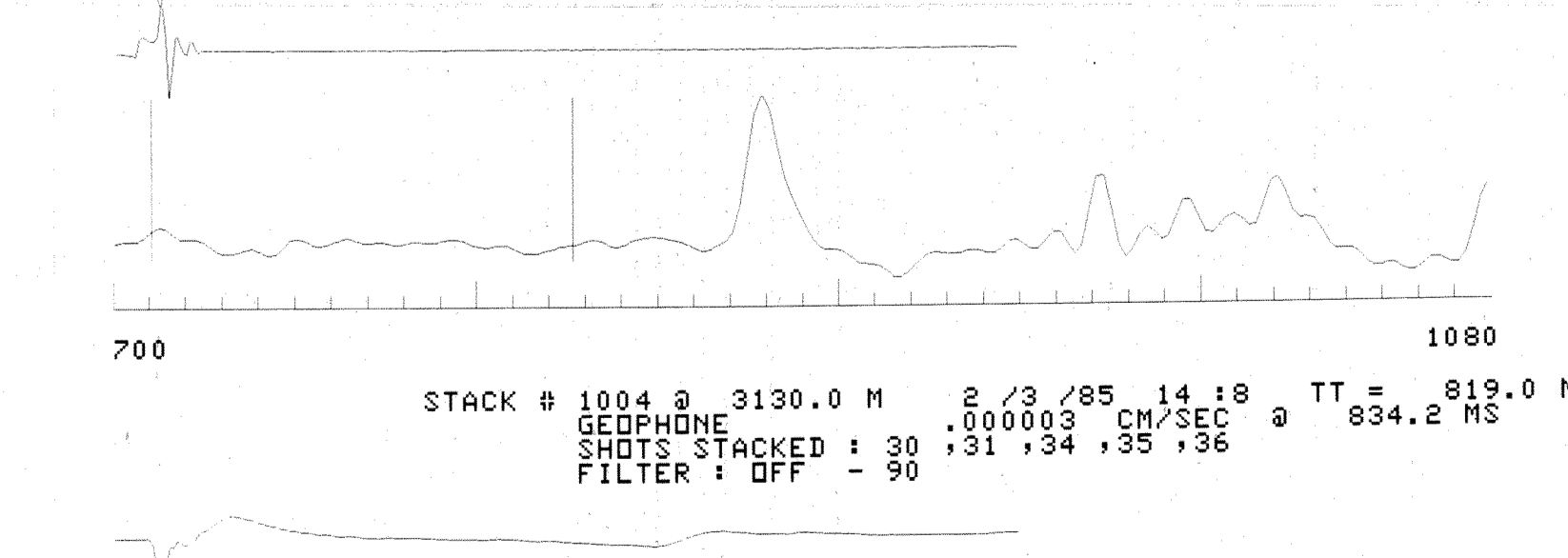
STACK # 1022 @ 2279.0 M 2 / 3 / 85 17 : 140 TT = 655.5 MS
 GEOPHONE .000143 CM/SEC @ 664.9 MS
 SHOTS STACKED : 94 , 95 , 96
 FILTER : OFF - OFF



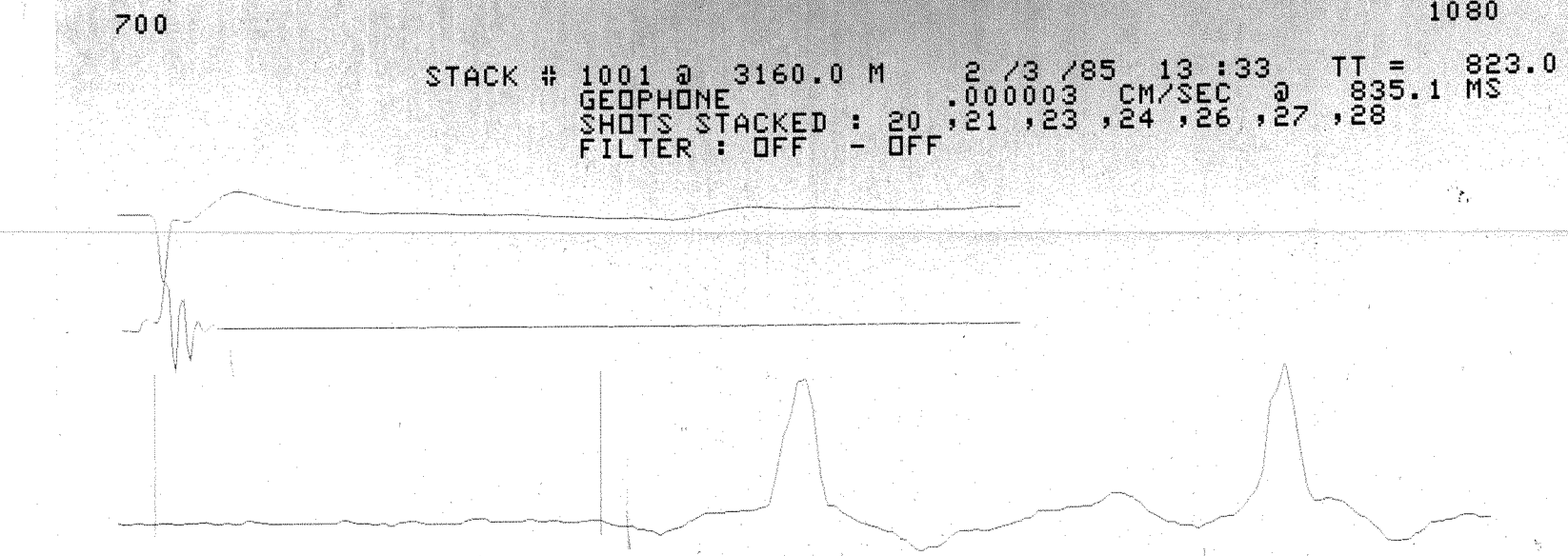
STACK # 1021 @ 2681.0 M 2 / 3 / 85 17 : 115 TT = 739.4 MS
 GEOPHONE .000057 CM/SEC @ 768.8 MS
 SHOTS STACKED : 88 , 89 , 90
 FILTER : OFF - OFF



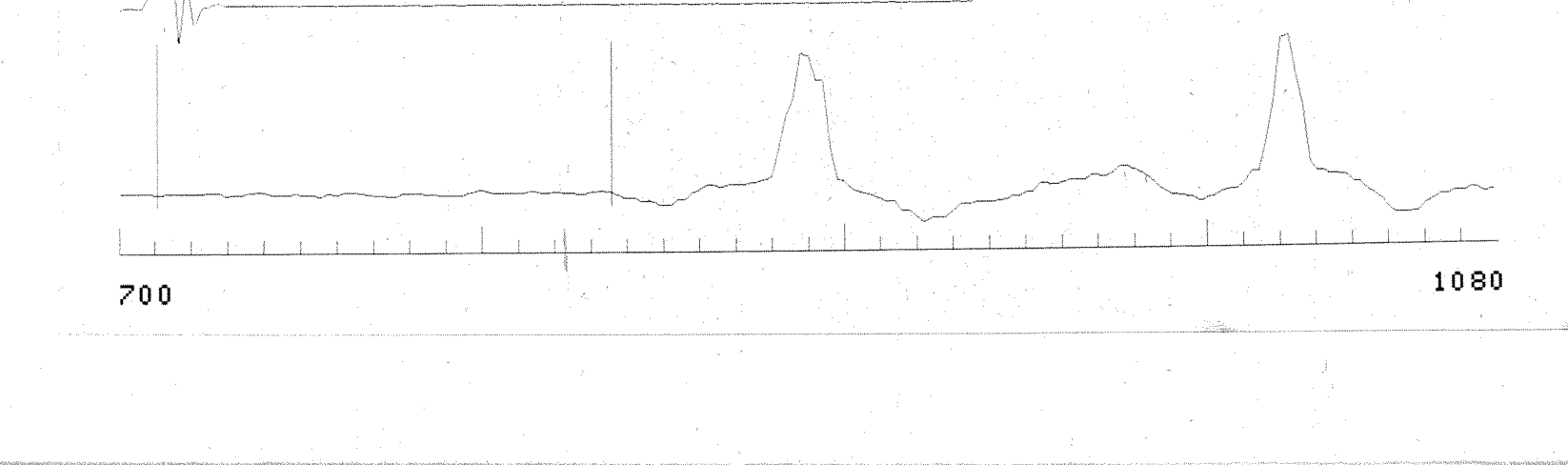
STACK # 1020 @ 2860.0 M 2 / 3 / 85 16 : 154 TT = 780.0 MS
 GEOPHONE .000003 CM/SEC @ 2088.0 MS
 SHOTS STACKED : 83 , 84 , 85 , 86 , 87
 FILTER : OFF - 90



STACK # 1018 @ 2890.0 M 2 / 3 / 85 16 : 128 TT = 780.0 MS
 GEOPHONE .000143 CM/SEC @ 2104.1 MS
 SHOTS STACKED : 78 , 79 , 80
 FILTER : OFF - OFF



STACK # 1016 @ 2920.0 M 2 / 3 / 85 16 : 13 TT = 784.0 MS
 GEOPHONE .000005 CM/SEC @ 799.1 MS
 SHOTS STACKED : 70 , 71 , 72
 FILTER : OFF - OFF



STACK # 1015 @ 2949.0 M 2 / 3 / 85 15 : 148 TT = 787.0 MS
 GEOPHONE .000003 CM/SEC @ 770.3 MS
 SHOTS STACKED : 65 , 66 , 69
 FILTER : OFF - OFF

STACK # 1013 @ 2980.0 M 2 / 3 / 85 15 : 122 TT = 790.0 MS
 GEOPHONE .000003 CM/SEC @ 809.1 MS
 SHOTS STACKED : 62 , 63 , 64
 FILTER : OFF - OFF

STACK # 1011 @ 3010.0 M 2 / 3 / 85 14 : 147 TT = 795.0 MS
 GEOPHONE .000003 CM/SEC @ 808.0 MS
 SHOTS STACKED : 59 , 60 , 61
 FILTER : OFF - 90

STACK # 1009 @ 3040.0 M 2 / 3 / 85 14 : 141 TT = 798.3 MS
 GEOPHONE .000003 CM/SEC @ 807.7 MS
 SHOTS STACKED : 54 , 56 , 57 , 58
 FILTER : OFF - 90

STACK # 1007 @ 3070.0 M 2 / 3 / 85 14 : 132 TT = 813.0 MS
 GEOPHONE .000003 CM/SEC @ 736.7 MS
 SHOTS STACKED : 50 , 51 , 53
 FILTER : OFF - OFF

STACK # 1006 @ 3100.0 M 2 / 3 / 85 14 : 124 TT = 816.0 MS
 GEOPHONE .000003 CM/SEC @ 632.4 MS
 SHOTS STACKED : 39 , 43 , 47
 FILTER : OFF - 90

STACK # 1004 @ 3130.0 M 2 / 3 / 85 14 : 18 TT = 819.0 MS
 GEOPHONE .000003 CM/SEC @ 834.2 MS
 SHOTS STACKED : 30 , 31 , 34 , 35 , 36
 FILTER : OFF - 90

STACK # 1001 @ 3160.0 M 2 / 3 / 85 13 : 133 TT = 823.0 MS
 GEOPHONE .000003 CM/SEC @ 839.6 MS
 SHOTS STACKED : 20 , 21 , 23 , 24 , 26 , 27 , 28
 FILTER : OFF - OFF

STACK # 1002 @ 3160.0 M 2 / 3 / 85 13 : 133 TT = 825.0 MS
 GEOPHONE .000003 CM/SEC @ 839.6 MS
 SHOTS STACKED : 20 , 21 , 23 , 24 , 26 , 27 , 28
 FILTER : OFF - OFF

