

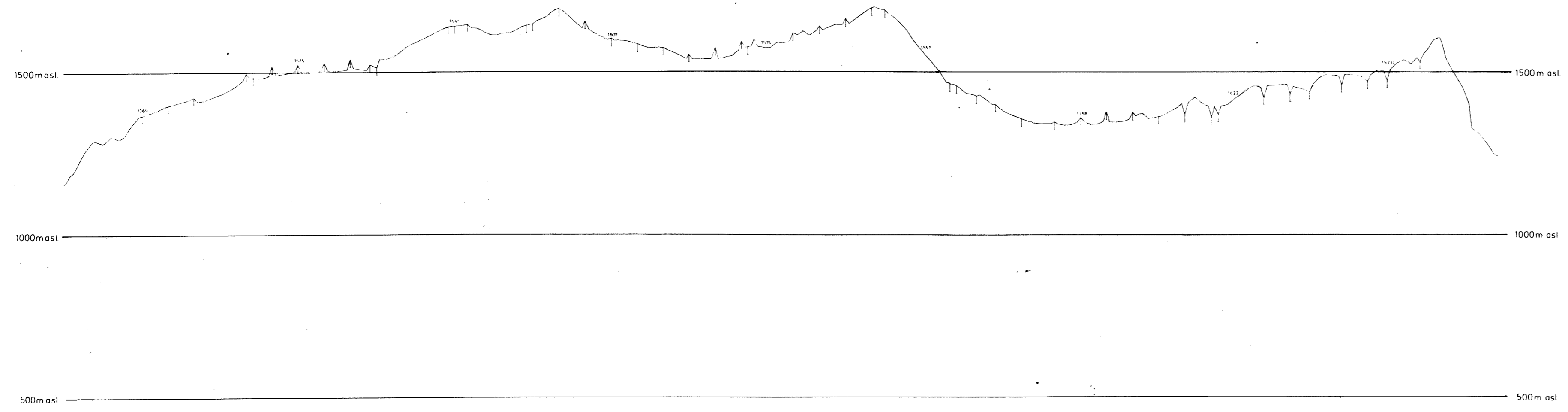
A2829

UFFICIO CONTROLARI RICERCHE IDROCARBURI
APPENNINO SETTENTRIONALE



PERMESSO ROCCHETTA LIGURE

600% OPT. FILT



Recording Data

Contract: PRARIS SEISMOS (Contract no.: 110131)
 Party: ITALY VI. ING. E. SCHWARZ
 Measurement: 1977
 Number of channels: 600
 Recorder type: DFS III / MDC 10106
 Length of record: 6 sec. (sample rate: 2 sec.)
 Recording rate: 12 ch. 18 sec.
 Duration of tape: 124 sec. 12 ch.
 Core system: BINARY GAIN
 Recorder type: H.S. 1A
 Filter type: K. 54 (length: 11 sec.)
 No. of channels per group: 48 (sample rate: 50 sec.)
 Length of a group: 100 sec. (sample rate: 24 sec.)
 Recorder type: 1
 Energy source: DYNAMITE
 Length of charge: 18 - 24 sec. (charge: 12 - 25 sec.)
 Shot depth: 700
 Energy concentration: SINGLE SHOT ONLY
 Core type: 1
 Core length: 24 - 25 sec. 48
 Core depth: 1150 m - 125 m - 1150 m

Processing Sequence

1. Analog digital conversion from AM/FM tapes
2. Sample rate: 4 sec.
3. Filter: 600% OPT. FILT
4. Shot correction: 0m/s
5. Shot correction: 0m/s
6. CONSTANT VELOCITY STACK (GEST)
7. Filter: 600% OPT. FILT
8. Shot correction: 0m/s
9. Shot correction: 0m/s
10. Shot correction: 0m/s
11. Shot correction: 0m/s
12. Shot correction: 0m/s
13. Shot correction: 0m/s
14. Shot correction: 0m/s
15. Shot correction: 0m/s
16. Shot correction: 0m/s
17. Shot correction: 0m/s
18. Shot correction: 0m/s
19. Shot correction: 0m/s
20. Shot correction: 0m/s
21. Shot correction: 0m/s
22. Shot correction: 0m/s
23. Shot correction: 0m/s
24. Shot correction: 0m/s
25. Shot correction: 0m/s
26. Shot correction: 0m/s
27. Shot correction: 0m/s
28. Shot correction: 0m/s
29. Shot correction: 0m/s
30. Shot correction: 0m/s
31. Shot correction: 0m/s
32. Shot correction: 0m/s
33. Shot correction: 0m/s
34. Shot correction: 0m/s
35. Shot correction: 0m/s
36. Shot correction: 0m/s
37. Shot correction: 0m/s
38. Shot correction: 0m/s
39. Shot correction: 0m/s
40. Shot correction: 0m/s
41. Shot correction: 0m/s
42. Shot correction: 0m/s
43. Shot correction: 0m/s
44. Shot correction: 0m/s
45. Shot correction: 0m/s
46. Shot correction: 0m/s
47. Shot correction: 0m/s
48. Shot correction: 0m/s
49. Shot correction: 0m/s
50. Shot correction: 0m/s
51. Shot correction: 0m/s
52. Shot correction: 0m/s
53. Shot correction: 0m/s
54. Shot correction: 0m/s
55. Shot correction: 0m/s
56. Shot correction: 0m/s
57. Shot correction: 0m/s
58. Shot correction: 0m/s
59. Shot correction: 0m/s
60. Shot correction: 0m/s
61. Shot correction: 0m/s
62. Shot correction: 0m/s
63. Shot correction: 0m/s
64. Shot correction: 0m/s
65. Shot correction: 0m/s
66. Shot correction: 0m/s
67. Shot correction: 0m/s
68. Shot correction: 0m/s
69. Shot correction: 0m/s
70. Shot correction: 0m/s
71. Shot correction: 0m/s
72. Shot correction: 0m/s
73. Shot correction: 0m/s
74. Shot correction: 0m/s
75. Shot correction: 0m/s
76. Shot correction: 0m/s
77. Shot correction: 0m/s
78. Shot correction: 0m/s
79. Shot correction: 0m/s
80. Shot correction: 0m/s
81. Shot correction: 0m/s
82. Shot correction: 0m/s
83. Shot correction: 0m/s
84. Shot correction: 0m/s
85. Shot correction: 0m/s
86. Shot correction: 0m/s
87. Shot correction: 0m/s
88. Shot correction: 0m/s
89. Shot correction: 0m/s
90. Shot correction: 0m/s
91. Shot correction: 0m/s
92. Shot correction: 0m/s
93. Shot correction: 0m/s
94. Shot correction: 0m/s
95. Shot correction: 0m/s
96. Shot correction: 0m/s
97. Shot correction: 0m/s
98. Shot correction: 0m/s
99. Shot correction: 0m/s
100. Shot correction: 0m/s

Display Data

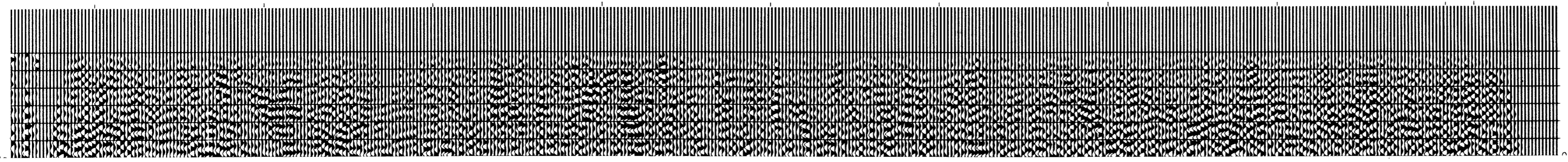
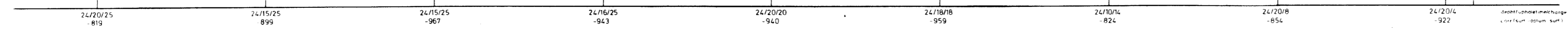
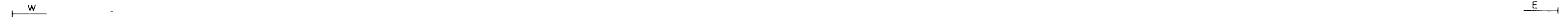
Analog filter: 600% OPT. FILT
 Filter type: 600% OPT. FILT
 Filter length: 11 sec.
 Scale: 1000m/s
 Remarks:

RESIDUAL STATICS (GEST)

Channel	Time	Amplitude
0.1	19	2.4
1.4	17	4.8
1.9	15	2.4
2.6	13	4.4
3.3	12	4.2
6.0	11	4.0

814/773

WALTER
KORNER
10283



All. 2: esempio di profilo topografico lungo una linea sismica registrata sul permesso Rocchetta.