

AGIP MINERARIA

ALLEGATO **3** DATA **MARZO 1982** DISEGNO N° **287/4**

COUNTRY : ITALY
PROSPECT : ROCCABERNARDA

LINE : RCB-76-8
SHOTPOINTS 376 TO 736

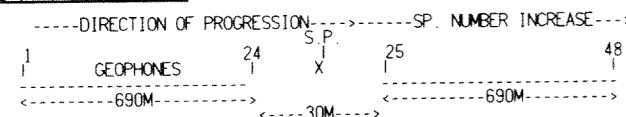
→ EAST

FILTERED STACK

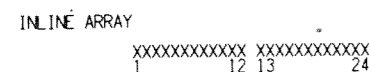
FIELD RECORDING DATA DISPLAY NO 426

RECORDED BY : G.S.I PARTY 693
DATE RECORDED : APRIL 1976 INSTRUMENTS : DFS4 48 TRACE
FILTERS : HIGH CUT 62 HZ LOW CUT 18 HZ (180B/OCT)
GAIN CONTROL MODE : IFP SOURCE : DYNAMITE
NO. OF HOLES : SINGLE HOLE HOLE DEPTH : 9-23 METRES
SPREAD : 705-0-705 METRES
SEISMOMETER TYPE : SM4
GROUP INTERVAL : 30 METRES

SHOT PATTERN



GEOPHONE ARRAY



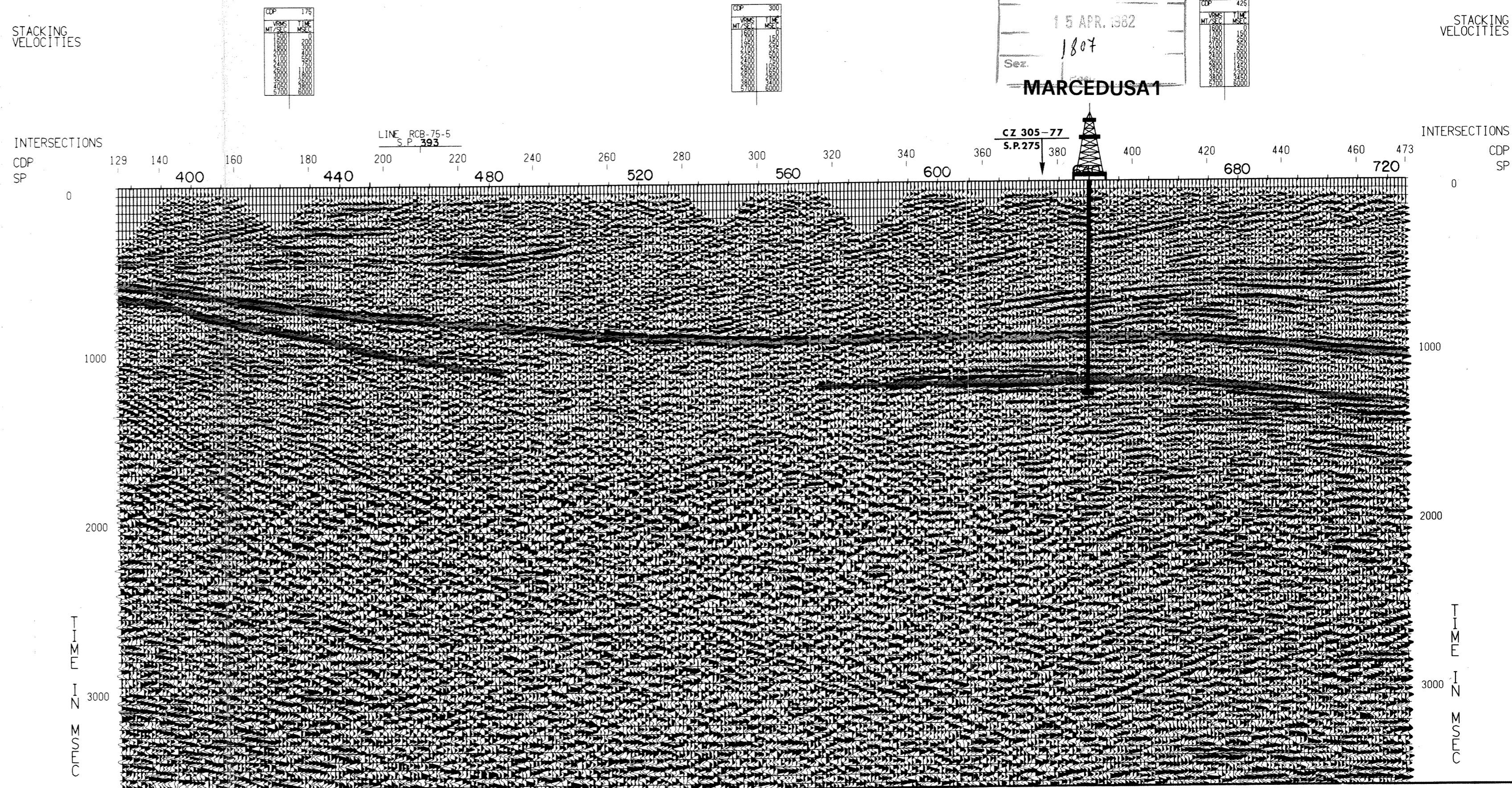
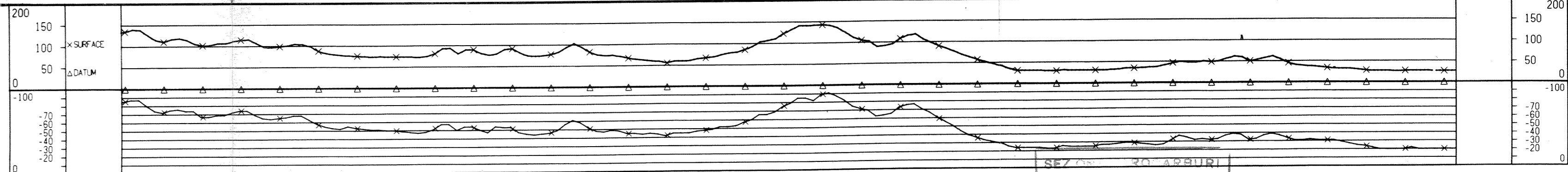
PROCESSING SEQUENCE

DATA PROCESSED TO 6 SECONDS . SAMPLE PERIOD : 4 MSECS

1. REFORMAT
2. TRUE AMPLITUDE RECOVERY A=2.5 DB-SEC
3. FIELD TRACE EDITING
4. TIME VARIANT DECONVOLUTION WITH 24 MSEC GAP
3 OPERATORS LENGTH=148 MSECS
5. TIME VARIANT SCALING
GATE LENGTH INCREASES WITH TIME
6. NORMAL MOVEOUT CORRECTION-SURFACE REFERENCE
(VELPAC VELOCITY ANALYSIS)
7. FIELD STATIC APPLICATION (DATUM=SEA LEVEL)
8. RESIDUAL STATIC APPLICATION
9. 6-FOLD COMMON DEPTH POINT STACK
10. TIME VARIANT FILTERING

TIME	PASSBAND
0	15 0 - 50 HZ
1200	15 0 - 50 HZ
2200	10 0 - 45 HZ
6000	10 0 - 45 HZ

11. TIME VARIANT SCALING 500 MSEC GATES



CDP	175
175	175
180	180
185	185
190	190
195	195
200	200
205	205
210	210
215	215
220	220
225	225
230	230
235	235
240	240
245	245
250	250
255	255
260	260
265	265
270	270
275	275
280	280
285	285
290	290
295	295
300	300
305	305
310	310
315	315
320	320
325	325
330	330
335	335
340	340
345	345
350	350
355	355
360	360
365	365
370	370
375	375
380	380
385	385
390	390
395	395
400	400
405	405
410	410
415	415
420	420
425	425
430	430
435	435
440	440
445	445
450	450
455	455
460	460
465	465
470	470
475	475

CDP	300
300	300
305	305
310	310
315	315
320	320
325	325
330	330
335	335
340	340
345	345
350	350
355	355
360	360
365	365
370	370
375	375
380	380
385	385
390	390
395	395
400	400
405	405
410	410
415	415
420	420
425	425
430	430
435	435
440	440
445	445
450	450
455	455
460	460
465	465
470	470
475	475

SEZ. ROCCABERNARDA
15 APR. 1982
1807
Sez.
MARCEDUSA1

CDP	425
425	425
430	430
435	435
440	440
445	445
450	450
455	455
460	460
465	465
470	470
475	475

STACKING VELOCITIES

INTERSECTIONS
CDP
SP

TIME IN MSEC