

600% DBS-TVF

REFERENCE 280977/5

ALLEGATO	DATA	DIS. N°
4	GIU. 1978	215/3-zona 3/4

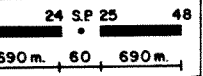
**Agip** AREA ITALIA-ZONA 4 WESTERN  
 ATTIVITA' MINERARIE PROSPECT ROCCABERNARDA RICERCHE  
 GEOFISICHE s.p.a.

RECORDING DATA PLAYBACK DATA

SHOT BY	SIAB	SAMPLE RATE	2 ml
PARTY	770102	RECORD LENGTH	6000 ml
MAGNETIC RECORDER	DFS 5	AMPLITUDE	18
GAIN	2 IEP	WEATHERING VEL	m/sec
SAMPLE RATE	2 ml	SUBWEATHERING VEL	1750 m/sec
RECORD LENGTH	6000 ml	DATUM PLANE	SEA LEVEL
FILTER (Hz)	128 Hz	Scale (VERTICAL)	1 Sec = 2.5 cm
FILTER (Hz)	18 Hz	Scale (HORIZONTAL)	1 Km = 19.10 cm
ALIASING FILTER	128 Hz	PREPROCESSOR REEL No.	82778
SUBSURFACE COVERAGE	600%	STACK REEL No.	79622
DATE	MAY, 1977	DATE	SEPTEMBER, 1977

FIELD DATA

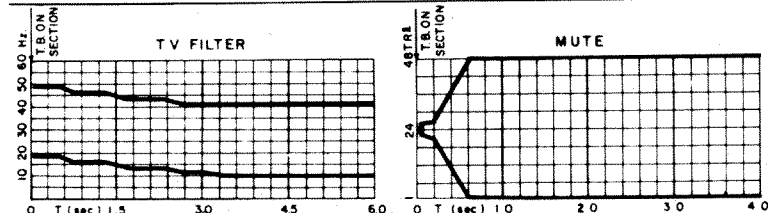
SPREAD CONFIGURATION	720-30-30-720 m.
----------------------	------------------



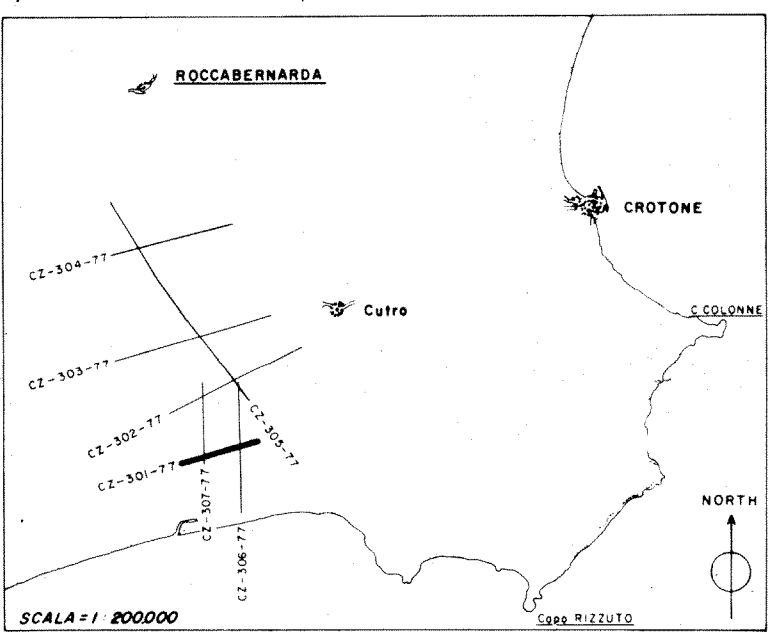
ENERGY SOURCE	DYNAMITE
SHOT HOLES / S	
AVERAGE CHARGE / SHOT	8 Kg.
AVERAGE SHOT / DEPTH	20 m.
GEOPHONE PATTERN	
GROUP INTERVAL	30 m.
GEOPHONES / GROUP	24
GEOPHONE FREQUENCY	14 Hz.

PROCESSING

TRANSCRIPTION	RESIDUAL STATICS
EDIT-DEMULTEPLEX ONLY OUTPUT	1) COMMON DEPTH POINT METHOD
EDIT-GAINED OUTPUT	COMMON OFFSET METHOD
1) EDIT-GEOPHONE AMPLITUDE OUTPUT	COMMON SHOT METHOD
	COMMON RECEIVER METHOD
	MANUAL
CORRELATION	
4) PREPROCESSOR	STACK
	WEIGHTED STACK
	12) COHERENCY STACK
STATIC CORRECTIONS	
6) BEFORE NMO	2) PREFILTER 13-125
AFTER NMO	3) SPECIAL GAIN ROUTINE IN db
	SPECIAL MUTE
DYNAMIC CORRECTIONS	FREQUENCY FILTER
7) STRAIGHT RAY	MULTICHANNEL FILTER
CURVED RAY	RADIAL PREDICTIVE FILTER
	CONTINUOUS VELOCITY ANALYSIS
8) PRELIMINARY STACK	
10) 100% CORRECTED	
100% SELECTED TRACES	
MINI SECTION	
9) VELOCITY ANALYSIS	
PREDICTIVE TIME DOMAIN DECON	PREDICTION DISTANCE OPERATOR LENGTH No WINDOWS
5) BEFORE STACK	24 160 3
AFTER STACK	

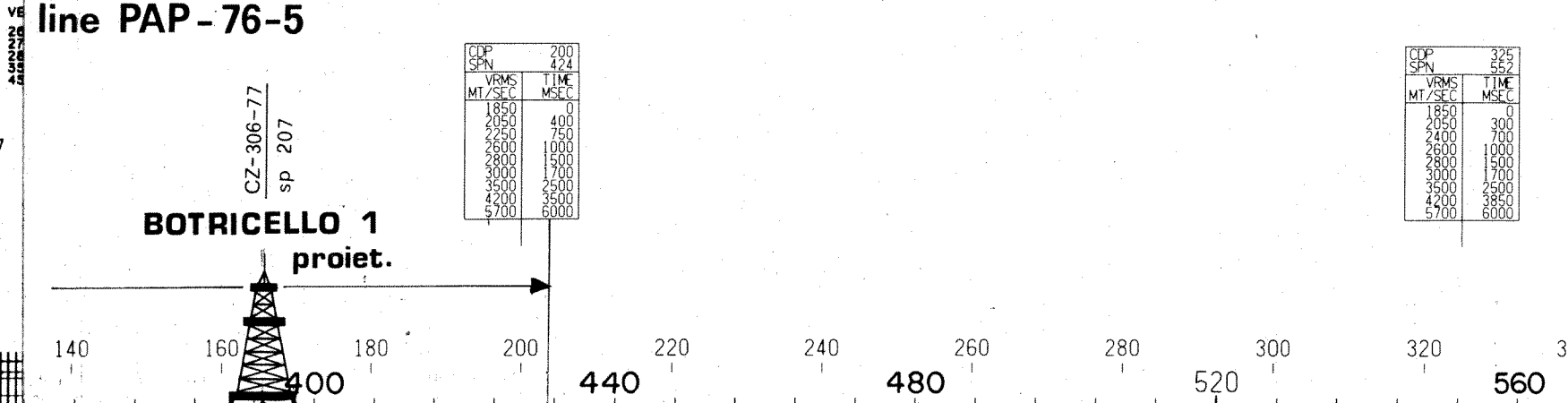
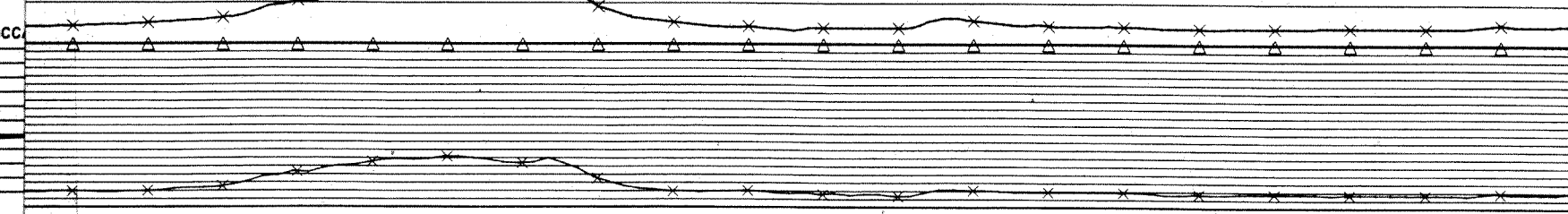
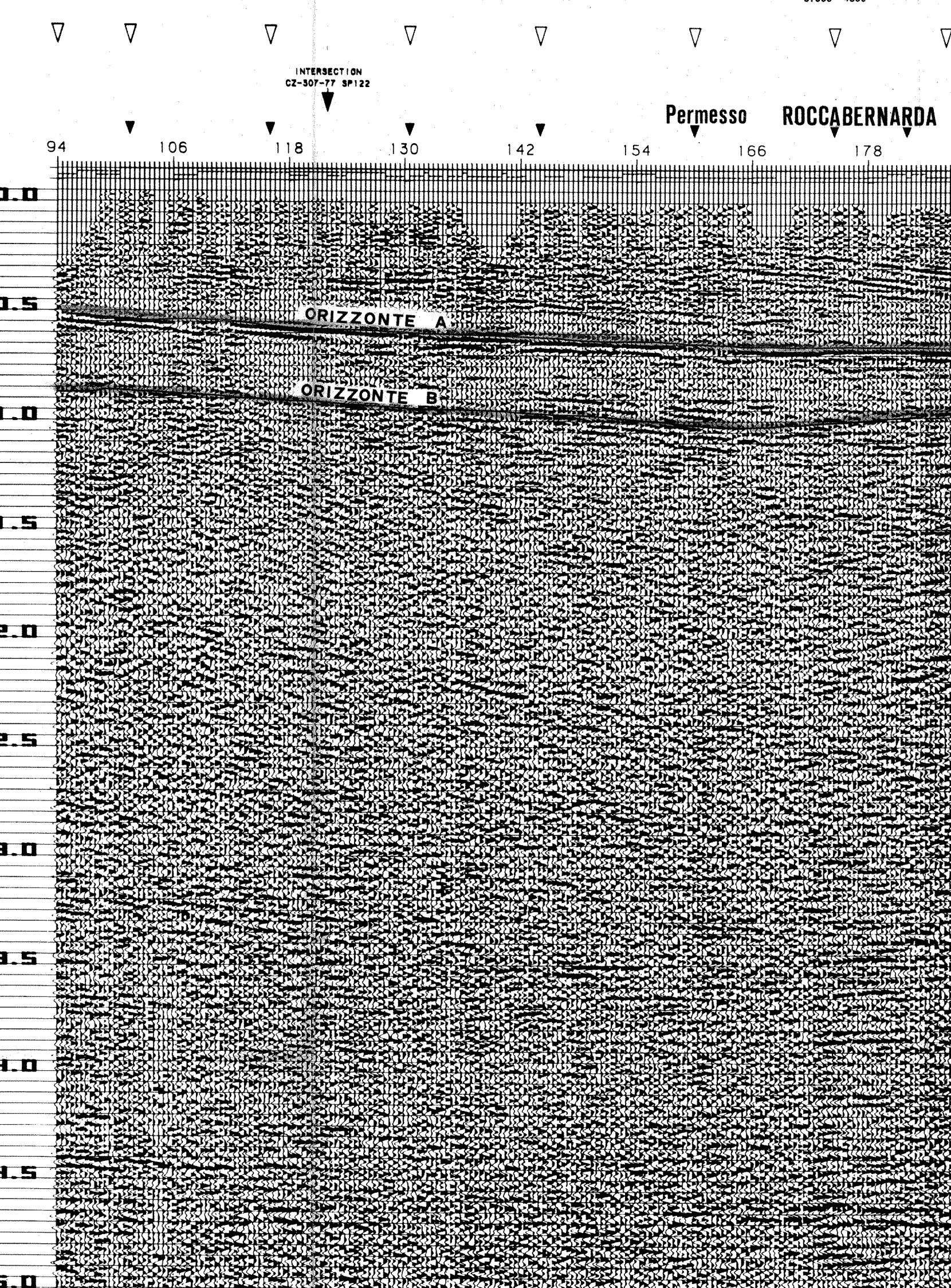


▽ VELOCITY FUNCTION CHANGE ▽ INTERSECTION ▽ VELOCITY ANALYSIS LOCATION



ANALYST *Slivay*

TIME	VEL	TIME	VEL	TIME	VEL	TIME	VEL	TIME	VEL	TIME	VEL	TIME	VEL
0.200	2400	0.200	2400	0.200	2400	0.200	2600	0.200	2500	0.200	2300	0.200	2200
0.400	2400	0.400	2400	0.400	2400	0.400	2600	0.400	2500	0.400	2300	0.400	2200
0.600	2400	0.600	2400	0.600	2400	0.600	2600	0.600	2500	0.600	2300	0.600	2200
0.800	2400	0.800	2400	0.800	2400	0.800	2600	0.800	2500	0.800	2300	0.800	2200
1.000	2400	1.000	2400	1.000	2400	1.000	2600	1.000	2500	1.000	2300	1.000	2200
1.200	2400	1.200	2400	1.200	2400	1.200	2600	1.200	2500	1.200	2300	1.200	2200
1.400	2400	1.400	2400	1.400	2400	1.400	2600	1.400	2500	1.400	2300	1.400	2200
1.600	2400	1.600	2400	1.600	2400	1.600	2600	1.600	2500	1.600	2300	1.600	2200
1.800	2400	1.800	2400	1.800	2400	1.800	2600	1.800	2500	1.800	2300	1.800	2200
2.000	2400	2.000	2400	2.000	2400	2.000	2600	2.000	2500	2.000	2300	2.000	2200



CDP	200
SP	272
MT/SEC	400
MT/SEC	750
MT/SEC	1000
MT/SEC	1200
MT/SEC	1500
MT/SEC	2000
MT/SEC	2500
MT/SEC	3000
MT/SEC	4000
MT/SEC	5000

CDP	325
SP	352
MT/SEC	400
MT/SEC	750
MT/SEC	1000
MT/SEC	1200
MT/SEC	1500
MT/SEC	2000
MT/SEC	2500
MT/SEC	3000
MT/SEC	4000
MT/SEC	5000