

SEZIONE IDROGRAFICA di N. 1000  
 30 DIC. 1987  
 Prot. N. 8076  
 Sez. Posiz.

CALVINO 1  
 (PROIETTATO)

P.C.=403 m  
 T.R.=408 m

Perm.BANZI Perm.ACERENZA

MUSACCHIO 1  
 (PROIETTATO ~1km da NE)

P.C.=562 m  
 T.R.=570 m

- 1a BASE PLIOCENE
- 2 TOP TORTONIANO (F.ne San Ferdinando)
- 3 TOP PLIOCENE (Brecce di Lavello)

LINE PZ-384-79 S.P. 101 S.P. 580

1200% DBS - TVF  
 D.P.=400 m l.m.

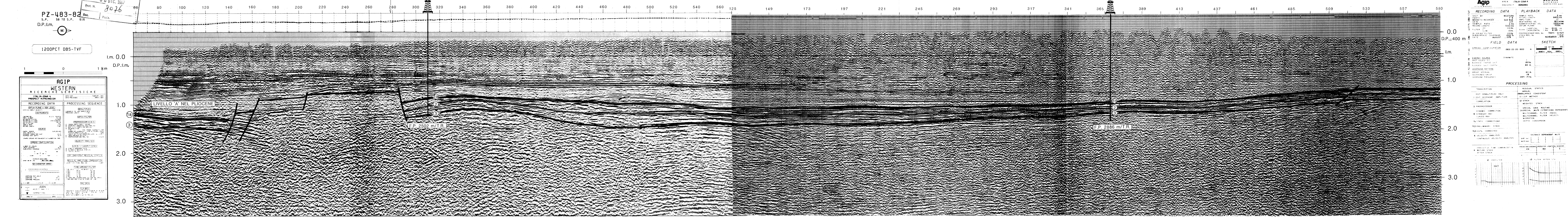
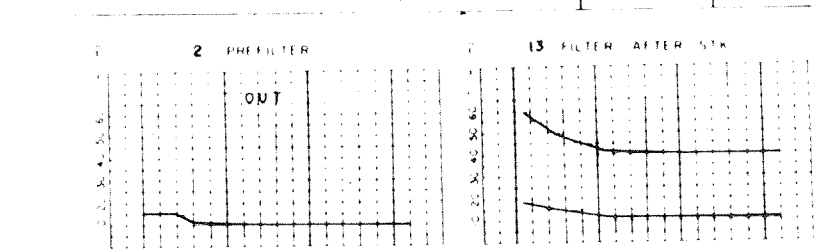
Agip AREA ITALIA-ZONA 4  
 PROJECT SERRAIO WESTERN  
 RECORDING DATA PLAYBACK DATA

RECORDING DATA	PLAYBACK DATA
SHOT BY: WESTERN	SAMPLE RATE: 2000
MAGNETIC RECORDER: GUS-812	MAGNETIC LENGTH: 6400
RECORD LENGTH: 1200m	AMPLITUDE: 200mV/m
SAMPLE RATE: 2000	RECORDING VELOCITY: 2000
RECORD LENGTH: 1200m	RECORDING VELOCITY: 2000
ALIASING FILTER: 1000	ALIASING FILTER: 1000
DATE: AUGUST 1979	DATE: AUGUST 1979

FIELD DATA	SKETCH
SPREAD CONFIGURATION: 1900 20 20 1900	AS SP 45 95
ENERGY SOURCE: DYNAMITE	1800 50m 1880m
AVERAGE VELOCITY: 1800	
GROUP INTERVAL: 40m	
GEOPHONE GROUP: 18	
GEOPHONE FREQUENCY: 500	

PROCESSING

MANUAL	RESIDUAL STATICS
1 EDIT DEMULTIPLEX ONLY	11 CORP. METHOD
2 CORRELATION	12 STACK
3 PREPROCESSOR	13 WEIGHTED STACK
4 DYNAMIC CORRECTION	14 SPECIAL GAIN ROUTINE
5 STRAIGHTEN	15 SPECIAL MUTE (STRATOSPHERE DEPENDENT)
6 CURVED RAY	16 MULTICHANNEL FILTER (PASS)
7 % STATIC CORRECTIONS	17 MULTICHANNEL FILTER (REJECT)
YES/NO/UNCORRECTED	18 DEPTH CONVERSION
8 VELOCITY ANALYSIS	19 DISTANCE DEPENDENT MUTE
9 CONTINUOUS VELOCITY ANALYSIS	20 GAIN IN
10 PREDICT AT TIME DOMAIN DECON	21 GAIN OUT
11 BEHIND STACK	22 HNO
12 AHEAD STACK	23 HNO



AGIP WESTERN Ricerche Geofisiche	
STATION ZONE	PROSPECT
RECORDING DATA	PROCESSING SEQUENCE
DATE: NOV 1987	DATE: NOV 1987
RECORD LENGTH: 1200m	RECORDING VELOCITY: 2000
SAMPLE RATE: 2000	RECORDING VELOCITY: 2000
ALIASING FILTER: 1000	ALIASING FILTER: 1000
DATE: AUGUST 1979	DATE: AUGUST 1979