

LINE IT-89-03
PROFILES 202-1251

AII.4

6000Z STACK

AREA CENTRAL APENNINES

CLIENT CHEVRON INTERNATIONAL LTD. ITALY
PROCESSED BY CHEVRON EXPL. & PROD. SERVICES CO.
DIVISION OF CHEVRON CORPORATION
HOUSTON DATA PROCESSING SYSTEM

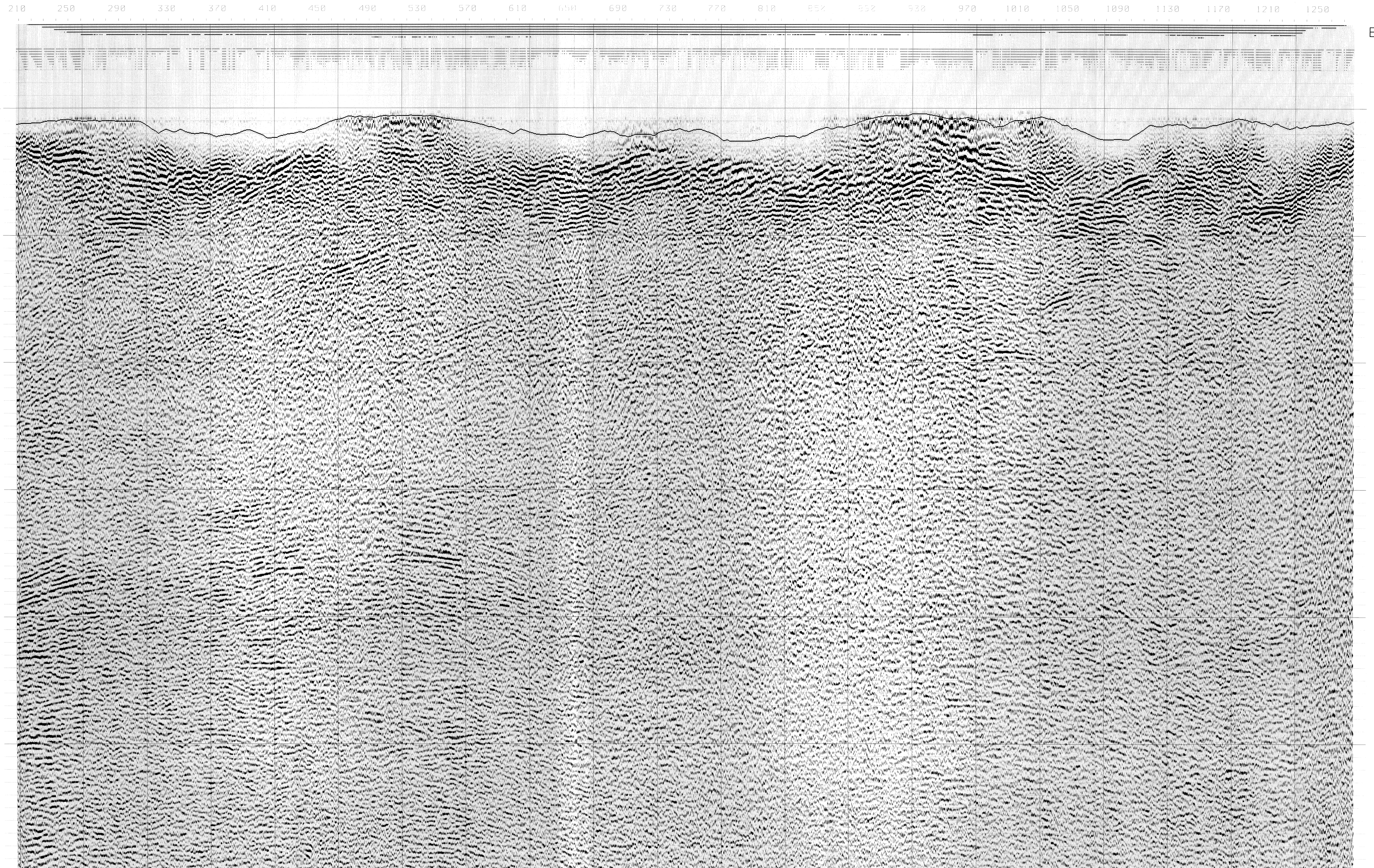
RECORDING PARAMETERS

CREW GLOBE-9 INST MDS-16 FORMAT SEG8 SPREAD IN METERS
FILTER 9/12-125/90 HZ NOTCH OUT SAMPLE INT. 2 MS 2987.5-12.5-X-12.5-2987.5
SOURCE DYNAMITE 1 HOLE DEPTH 8-24 M
CHARGE 1-10 KG SHOT INT 50 M GROUP INT 25 M
NO. CHANNELS 240 COVERAGE 6000Z B 5 RECORD LENGTH
SHOT NO. 15889 DISTURB +1000 M DIRECTION W -> E

PROCESSING FLOW

ASSIGN GEOMETRY
RESAMPLE TO 4 MS
GEOMETRICAL DIVERGENCE CORRECTION
TRACE EDITING
NEAR SURFACE NOISE SUPPRESSION
REFRACTION ANALYSIS STATICS APPLIED TO 1000 M AMSL
STATIC SHIFT TO FLOATING DATUM
PROFILE AVERAGE SPIKING DECONVOLUTION - OP LEN - 200 MS
GATE: NEAR OFFSET - 0.4 TO 4.0 SEC.
FAR OFFSET - 1.4 TO 4.0 SEC.
TIME VARIANT AMPLITUDE EQUALIZATION - 1000 MS
VELOCITY ANALYSIS
SURFACE CONSISTENT RESIDUAL STATICS
VELOCITY ANALYSIS
NORMAL MOVE OUT CORRECTIONS
6000Z STACK WITH COP COHERENCY ENHANCEMENT OFFSET RANGE 300 - 3000 M
FLOATING DATUM REMOVED
FILTER 13 HZ-180B/OCT 30 HZ-360B/OCT ZERO PHASE

PLOT - TRACES EQUALIZED
HORIZONTAL SCALE - 20 TRACES PER CM (1:25000)
VERTICAL SCALE - 10 CM PER SECOND



LINE IT-89-03
PROFILES 202-1251

STACKING VELOCITIES

AREA CENTRAL APENNINES

Table with columns for depth (0-5900m) and stacking velocities (0-5000m/s). The table lists velocity values for various depths, showing a general increase from approximately 1500 m/s at the surface to 4000 m/s at 5900m depth.