

LINE IT-88-04 All. 2

PROFILES 1215-190

6000% STACK

AREA CENTRAL APENNINES / REITI

CLIENT CHEVRON INTERNATIONAL LTD. ITALY
PROCESSED BY CHEVRON EXPL. & PROD. SERVICES CO.
DIVISION OF CHEVRON CORPORATION
HOUSTON DATA PROCESSING SYSTEM

RECORDING PARAMETERS

CREW GLOBE-9 INST MDS-16 FORMAT SEGR SPREAD IN METERS
FLTR 9/12-125/90 MZ NOTCH OUT SAMPLE INT. 2 MS 2987.5-12.5-X-12.5-2987.5
SOURCE DYNAMITE 1 HOLE DEPTH 15-21 M
CHARGE 1.15 KG SHOT INT 50 M GROUP INT 25 M
NO. CHANNELS 240 COVERAGE 6000Z B S RECORD LENGTH
SHOT OCT. 1988 DATUM +1000 M DIRECTION NW -> SE

PROCESSING FLOW

ASSIGN GEOMETRY
RESAMPLE TO 4 MS
GEOMETRICAL DIVERGENCE CORRECTION
TRACE EDITING
NEAR SURFACE NOISE SUPPRESSION
REFRACTION ANALYSIS STATICS APPLIED TO 1000 M RMSL
STATIC SHIFT TO FLOATING DATUM
PROFILE AVERAGE SPINING DECONVOLUTION - OP LEN + 200 MS
GATE: NEAR OFFSET - 0.4 TO 4.0 SEC.
FAR OFFSET - 1.4 TO 4.0 SEC.
TIME VARIANT AMPLITUDE EQUALIZATION - 1000 MS
VELOCITY ANALYSIS
SURFACE CONSISTENT RESIDUAL STATICS
VELOCITY ANALYSIS
NORMAL MOVE OUT CORRECTIONS
6000Z STACK WITH CDP COHERENCY ENHANCEMENT
FLOATING DATUM REMOVED
FILTER 10 HZ-180B/OCT 30 HZ-360B/OCT ZERO PHASE

PLOT - TRACES EQUALIZED
HORIZONTAL SCALE = 20 TRACES PER CM (1:25000)
VERTICAL SCALE = 10 CM PER SECOND

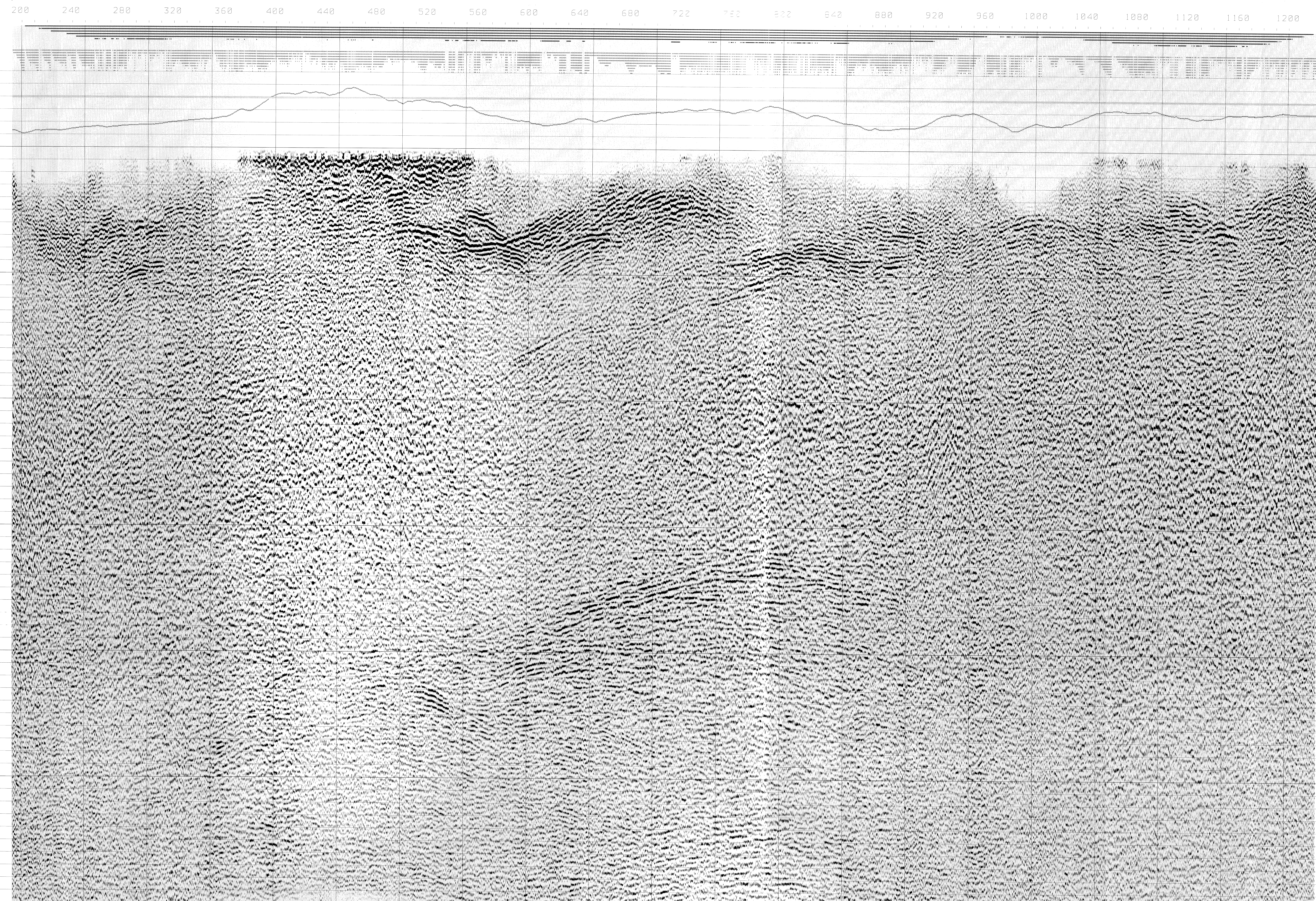
LINE IT-88-04

PROFILES 1215-190

STACKING VELOCITIES

AREA CENTRAL APENNINES / REITI

SP. 1080.					
VNMS+5050.5100.	5150.	5400.	5500.5700.6000.6000.		
TNMS+0.01.0.20.	0.40.	0.60.	0.90.1.00.2.00.6.0.		
SP. 1040.					
VNMS+4500.5000.	5400.	5450.	5500.5700.6000.6000.		
TNMS+0.01.0.20.	0.40.	0.70.	0.90.1.00.2.00.6.0.		
SP. 950.					
VNMS+4500.5000.	5400.	5450.	5500.5700.6000.6000.		
TNMS+0.01.0.20.	0.40.	0.70.	0.90.1.00.2.00.6.0.		
SP. 900.					
VNMS+4200.4800.	5000.	5400.	5500.5700.6000.6000.		
TNMS+0.01.0.20.	0.40.	0.60.	0.90.1.00.2.00.6.0.		
SP. 750.					
VNMS+4200.4800.	5000.	5400.	5500.5700.6000.6000.		
TNMS+0.01.0.20.	0.40.	0.60.	0.90.1.00.2.00.6.0.		
SP. 720.					
VNMS+4380.	4380.4380.4450.4600.4850.4850.	6000.6000.			
TNMS+0.01.	0.30.0.40.0.50.0.60.0.70.0.80.0.90.	2.00.6.0.			
SP. 550.					
VNMS+4380.	4380.4380.4450.4600.4850.4850.	6000.6000.			
TNMS+0.01.	0.30.0.40.0.50.0.60.0.70.0.80.0.90.	2.00.6.0.			
SP. 500.					
VNMS+5100.	5100.	4850.	4850.5000.6000.6000.		
TNMS+0.01.	0.30.	0.50.	0.90.1.00.2.00.6.0.		
SP. 400.					
VNMS+5100.	5100.	4850.	4850.5000.6000.6000.		
TNMS+0.01.	0.30.	0.50.	0.90.1.00.2.00.6.0.		
SP. 300.					
VNMS+4400.	4400.		4900.5200.5200.6000.6000.		
TNMS+0.01.	0.40.		0.80.0.90.1.00.2.00.6.0.		
SP. 201.					
VNMS+4400.	4400.		4900.5200.5200.6000.6000.		
TNMS+0.01.	0.40.		0.80.0.90.1.00.2.00.6.0.		



1km 4cm 1km