

LINE IT-88-03  
PROFILES 233-723

All. 1

6000% STACK

AREA CENTRAL APENNINES / REITI

CLIENT CHEVRON INTERNATIONAL LTD. ITALY  
PROCESSED BY CHEVRON EXPL. & PROD. SERVICES CO.  
DIVISION OF CHEVRON CORPORATION  
HOUSTON DATA PROCESSING SYSTEM

RECORDING PARAMETERS

CREW GLOBE-9	INST MDS-16	FORMAT SEGB	SPREAD IN METERS
FLTR 9/12-125/90 HZ	NOTCH OUT	SAMPLE INT. 2 MS	2987.5-12.5-X-12.5-2987.5
SOURCE DYNAMITE	1 HOLE	DEPTH 8-24 M	
CHARGE 3-5 KG	SHOT INT 50 M	GROUP INT 25 M	
NO. CHANNELS 240	COVERAGE 6000%	8 S RECORD LENGTH	
SHOT SEP. 1988	DATUM 500 M	DIRECTION W-> E	

PROCESSING FLOW

ASSIGN GEOMETRY  
RESAMPLE TO 4 MS  
GEOMETRICAL DIVERGENCE CORRECTION  
TRACE EDITING  
NEAR SURFACE NOISE SUPPRESSION  
REFRACTION ANALYSIS STATICS APPLIED TO 1000 M AMSL  
STATIC SHIFT TO FLOATING DATUM  
PROFILE AVERAGE SPIKING DECONVOLUTION - OP LEN = 200 MS  
GATE: NEAR OFFSET - 0.4 TO 4.0 SEC.  
FAR OFFSET - 1.2 TO 4.0 SEC.  
TIME VARIANT AMPLITUDE EQUALIZATION - 1000 MS  
VELOCITY ANALYSIS  
SURFACE CONSISTENT RESIDUAL STATICS  
VELOCITY ANALYSIS  
NORMAL MOVE OUT CORRECTIONS  
6000% STACK WITH CDP COHERENCY ENHANCEMENT  
FILTER 10 HZ-180B/OCT 30 HZ-360B/OCT ZERO PHASE  
FLOATING DATUM REMOVED

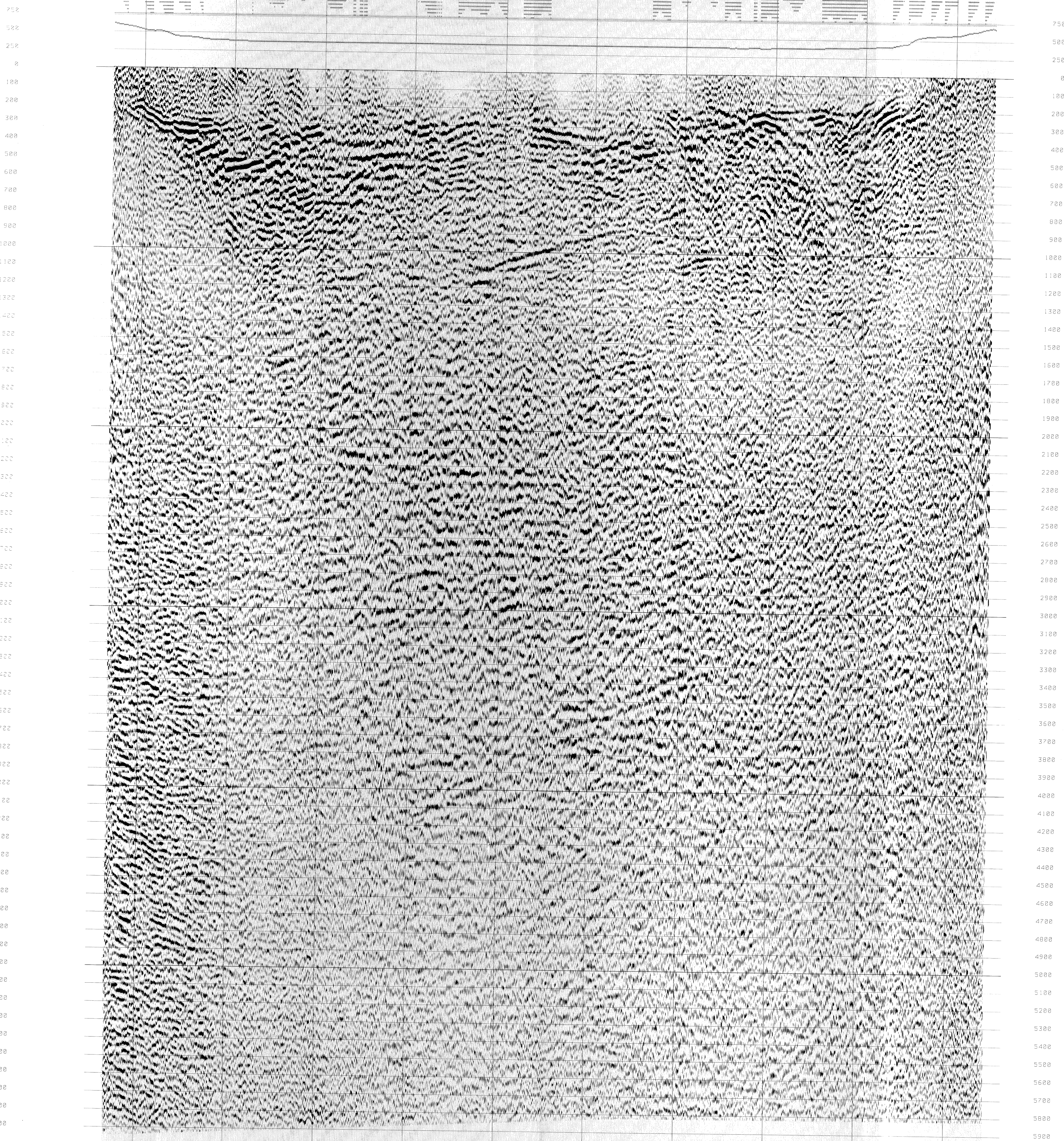
PLOT - TRACES EQUALIZED  
HORIZONTAL SCALE = 20 TRACES PER CM (1:25000)  
VERTICAL SCALE = 10 CM PER SECOND



242 282 320 360 400 440 480 520 560 600 640 680 720

W

E



1km 4cm 1km

LINE IT-88-03  
PROFILES 233-723

STACKING VELOCITIES

AREA CENTRAL APENNINES / REITI

SP. 295.  
VNMS=3300, 3500, 3500, 3600, 4050, 4200, 4230, 5400, 5500, 5700, 6000.  
TNMS= 0.0, 30.0, 40.0, 60.0, 70.0, 80.0, 1.50, 2.20, 2.60, 3.00, 6.00.

SP. 325.  
VNMS=3300, 3500, 3500, 3600, 4050, 4200, 4230, 5400, 5500, 5700, 6000.  
TNMS= 0.0, 30.0, 40.0, 60.0, 80.0, 90.0, 1.50, 2.20, 2.60, 3.00, 6.00.

SP. 355.  
VNMS=3400, 3735, 3800, 4050, 4200, 4230, 5400, 5500, 5700, 6000.  
TNMS= 0.0, 50.0, 60.0, 80.0, 90.0, 1.50, 2.20, 2.60, 3.00, 6.00.

SP. 405.  
VNMS=3400, 3700, 3800, 4300, 4800, 5400, 5500, 5700, 6000.  
TNMS= 0.0, 50.0, 60.0, 90.0, 1.30, 2.20, 2.60, 3.00, 6.00.

SP. 455.  
VNMS=3000, 3400, 3800, 3900, 4650, 4800, 5150, 5400, 5500, 5700, 6000.  
TNMS= 0.0, 40.0, 60.0, 90.0, 1.10, 1.20, 1.30, 2.20, 2.60, 3.00, 6.00.

SP. 485.  
VNMS=3000, 3600, 3600, 3900, 3900, 4700, 4850, 5100, 5200, 5400, 5500.  
5700, 6000.  
TNMS= 0.0, 50.0, 60.0, 80.0, 90.0, 1.00, 1.10, 1.20, 1.30, 2.20, 2.60,  
3.00, 6.00.

SP. 530.  
VNMS=2800, 3300, 3600, 3900, 3900, 4700, 4850, 5100, 5200, 5400, 5500.  
5700, 6000.  
TNMS= 0.0, 50.0, 70.0, 80.0, 90.0, 1.00, 1.10, 1.20, 1.30, 2.20, 2.60,  
3.00, 6.00.

SP. 560.  
VNMS=2300, 2200, 2300, 2500, 3300, 3900, 4300, 4600, 4800, 5100, 5400,  
5500, 5700, 6000.  
TNMS= 0.0, 30.0, 40.0, 50.0, 60.0, 70.0, 80.0, 90.0, 1.00, 1.10, 1.20, 1.30, 2.20,  
2.60, 3.00, 6.00.

SP. 590.  
VNMS=2100, 2200, 2300, 2500, 2650, 2850, 2950, 3300, 3400, 4000, 4800,  
5000, 5400, 5500, 5700, 6000.  
TNMS= 0.0, 30.0, 40.0, 50.0, 60.0, 70.0, 80.0, 90.0, 1.00, 1.10, 1.20,  
1.30, 2.20, 2.60, 3.00, 6.00.

SP. 660.  
VNMS=2100, 2200, 2300, 2500, 2650, 2850, 2950, 3200, 3600, 4000, 4800,  
5000, 5400, 5500, 5700, 6000.  
TNMS= 0.0, 30.0, 40.0, 50.0, 60.0, 70.0, 80.0, 90.0, 1.00, 1.10, 1.20,  
1.30, 2.20, 2.60, 3.00, 6.00.