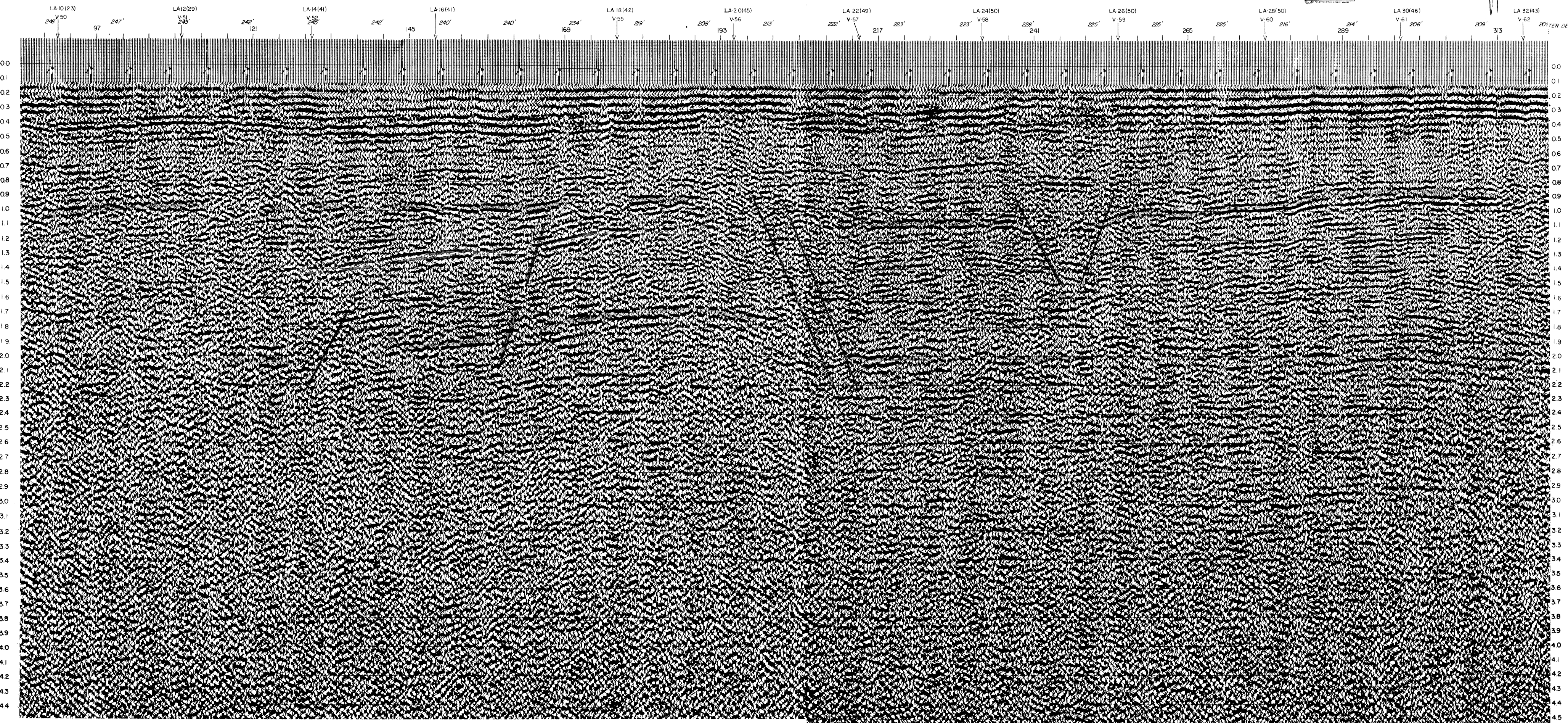


ZONA DI PALEDALTO



IDROCARBURI CANALE DI SICILIA S.p.A.

184
d 809 C.R.-15



ORIZZ.
"B"

ORIZZ.
"C"

PROCESSED FOR Line No.
MONTEDISON LA 9

DATE 7/15/74

PROCESSED BY G.D.P.C. HOUSTON DATA CENTER

AREA MEDITERRANEAN SEA

LOCATION SEISMIC EXPLORER

MOTOR VESSEL SEISMIC EXPLORER

DATE RECORDED 3/28/74

TYPE CABLE SEC MULTIDYNE DEPTH 40

RECORDING INFORMATION

ENERGY SOURCE SLEEVE EXPLODER

AIR GUN/SLEEVE EXPLODER ARRAY

VIBROSEIS SWEEP UPSWEEP / DOWNSWEEP

START FREQ _____ Hz SWEEP RATE _____ Hz/Sec

SWEEP LENGTH _____ Sec TAPER _____ Sec

INSTRUMENTS DPS III SEG A' EPR

SAMPLE RATE 2 Hz GAIN MODE BINARY

FILTER: LC 8 Hz SLOPE 18 dB/OCT

HC 62 Hz SLOPE 72 dB/OCT

DIRECTION RECORDED EAST

SHOTPOINT INTERVAL 100m POP/SWEEP INT 20m

GROUP INTERVAL 50m GEO/GROUP

NEAR GROUP 48 DISTANCE 300m

FAR GROUP 1 DISTANCE 2650m

PROCESSING SEQUENCE

1. REFORMAT SAMPLE RATE 4 Hz

2. BINARY GAIN RECOVERY

3. SUM 2 RECORDS INTO ONE

CROSS CORRELATION

4. TRACE 48 SECTION DISPLAYED

5. AUTOMATIC VELOCITY DETERMINATION

SINGLE COVERAGE DISPLAYED

COMMON DEPTH POINTS DISPLAYED

6. DECONVOLUTION OPERATOR 200 Hz

GATE 1.48-2.45 - 1.1-2.2-4.2 Sec

7. MUTE CORRECTION

8. MUTE

9. STACK 24 FOLD

10. DECONVOLUTION OPERATOR 120 Hz

GATE 2-2.2 Sec

11. FILTER

12. TV FILTER

16-45 Hz 0.0-0.7 Sec

16-40 Hz 0.7-1.5 Sec

12-35 Hz 1.5-2.1 Sec

10-30 Hz 2.1-4.5 Sec

13. TRACE EQUALIZATION

14. POWER EQUALIZATION

* INDICATES VBL CASE NUMBER

** PREDICTIVE DIST. 1040 ms

DISPLAY

✓ STACK SINGLE COVERAGE GATHERS

ANALOG P/B FILTER OUT-OUT Hz

MIX NONE AGC NONE

VERTICAL SCALE 3.75 "/Sec

HORIZONTAL SCALE 24 TR/IN

