

CH-456

CH-456-84
S.P. 113 TO S.P. 301



800 PCT DBS-MIGR-TVF

SEZONA I
27 SET 1984
Prot. N° 03795

SP	126.50
TIME	RMS VEL DIS INT
0.30	1810 1810
0.49	1810 2058
0.63	2210 3035
0.71	2250 2543
0.80	2310 2738
0.85	2500 4569
1.07	2500 2689
1.41	2670 3043
1.55	2790 3792
1.72	3000 4482
1.79	3240 6877
1.98	3500 8718
2.48	3840 7725
3.00	4020 4778
7.00	4500 5520

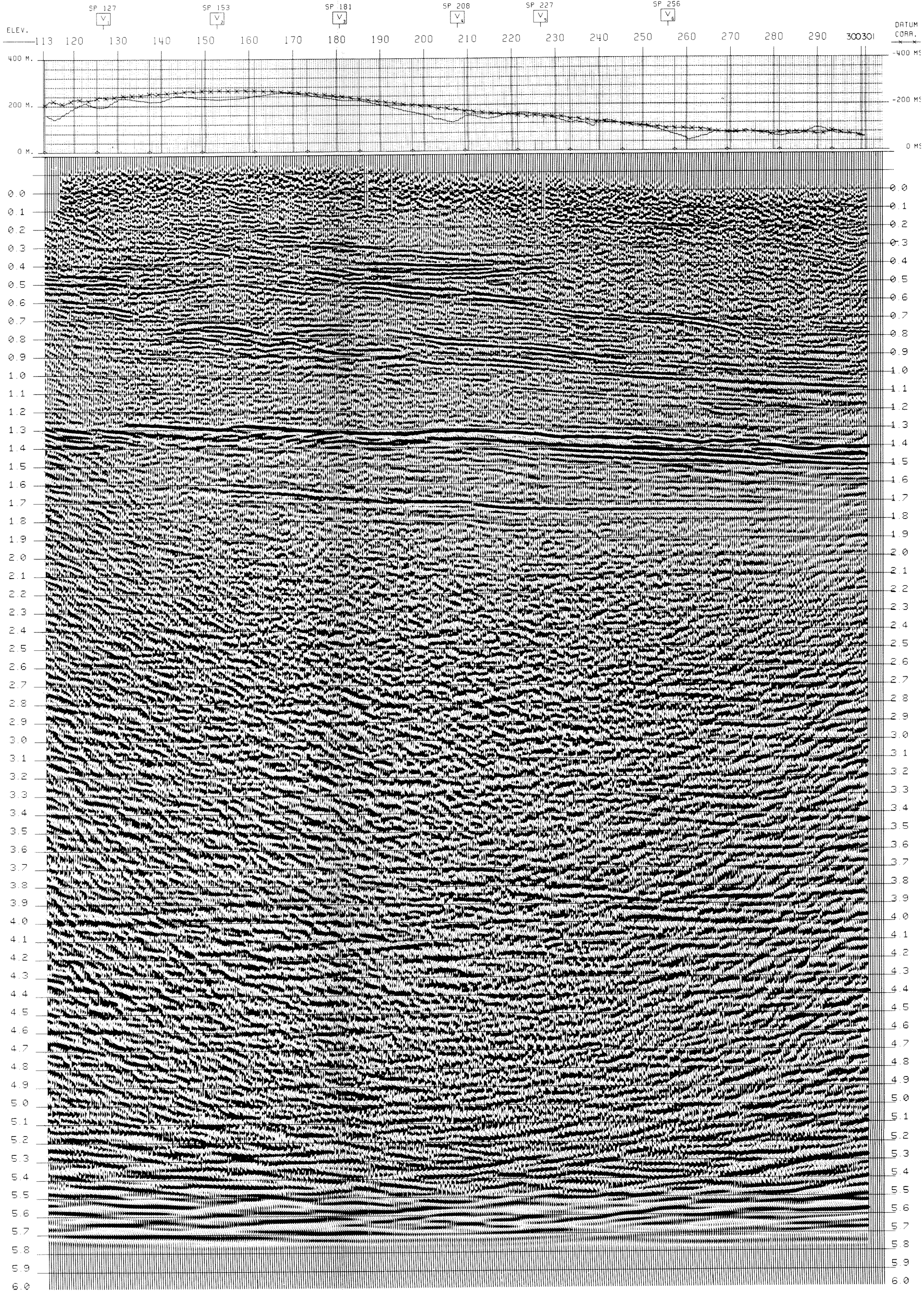
SP	152.50
TIME	RMS VEL DIS INT
0.23	1960 1960
0.43	2010 2068
0.46	2100 3116
0.59	2210 2562
0.59	2300 2427
1.05	2310 2459
1.27	2410 2837
1.46	2500 3034
1.68	2560 3201
1.82	2830 6063
1.73	2860 5159
2.27	3500 4878
3.00	4000 4683
7.00	4500 5557

SP	180.50
TIME	RMS VEL DIS INT
0.34	2020 2020
0.51	2080 2193
0.60	2085 2113
0.71	2080 2086
0.85	2590 2478
1.10	2370 2859
1.25	2400 2957
1.55	2580 3248
1.69	3030 6094
1.81	3090 3517
2.08	3540 7108
3.00	4000 4235
7.00	4500 5557

SP	207.50
TIME	RMS VEL DIS INT
0.24	1950 1950
0.60	2020 2112
0.56	2170 3272
0.55	2210 2422
0.74	2280 2791
0.81	2410 3501
1.00	2510 2888
1.13	2620 3347
1.46	2670 2835
1.52	2710 3647
1.72	2810 3477
1.87	2830 3050
1.99	3120 8052
3.00	3880 4442
7.00	4500 4128

SP	226.50
TIME	RMS VEL DIS INT
0.31	1930 1930
0.60	2020 2112
0.76	2190 2735
1.01	2280 2570
1.09	2330 2786
1.24	2310 2643
1.48	2480 3028
1.52	2510 3153
1.51	2660 4481
1.88	3180 5313
1.99	3510 7075
3.56	3850 4243
5.00	4000 4349
7.00	4500 5557

SP	255.50
TIME	RMS VEL DIS INT
0.29	1870 1870
0.53	2110 2368
0.76	2400 2962
1.00	2450 2541
1.10	2550 3318
1.26	2550 2591
1.30	2630 4079
1.44	2700 3279
1.47	2770 5104
1.55	2980 5574
1.63	2720 6425
2.10	3870 4975
5.00	4000 4203
7.00	4500 5557



SORI
WESTERN RICERCH E GEOFISICHE
MILAN - ITALY

AREA : ITALIA-ZONA 2
PROSPECT : PUNTA-DELLA-PENNA

DATE SHOT :JULY, 1984
DATE PROCESSED :APRIL, 1985

RECORDING DATA

PARTY NUMBER: GLOBE-4
RECORDING SYSTEM: SEG-B
RECORDING FILTER: LOW: 10 HZ 24 DB/OCT
ANTENNAS FILTER: HI: 106.7 HZ 62 DB/OCT
MATCH FILTER:
RECORD LENGTH: 7000 MS
SAMPLE RATE: 2 MS
ENERGY SOURCE: DYNAMITE

SUBSURFACE COVERAGE: 800 PCT
GROUP INTERVAL: 30 M
NUMBER OF GROUPS: 96

VELOCITY FOR STAT CORR.: 1700 M/S
DATUM PLANE (ABOVE SEA LEVEL): 0

UPWARD GROUND MOTION = NEGATIVE NUMB. ON TAPE

SPREAD DIMENSIONS

Centre of source array: NORTH-EAST
Direction of line: NORTH-EAST

GEOPHONE PATTERN

Geophone type: SM-48/10 HZ
Geophone group: 27

X = 50 M T = 10 M

S.P. PATTERN

SHOT HOLES/S.P.: 1
AVERAGE SHOT DEPTH: 30 M
AVERAGE SHOT CHARGE: 4 KG

LEGEND

V VELOCITY ANALYSIS
▲ INTERSECTIONS

ANALYST: E. P. DATE: 4-11-84

PROCESSING SEQUENCE

- 1 DEMULTIPLEX GEO AMP. QMS S.R.
- 2 PREFILTER
- 3 MINIMUM PHASE CONVERSION
- 4 PREPROCESSOR-DECON
- 5 SURF. CONSISTENT RESID. STATICS
- 6 VELOCITY ANALYSIS
- 7 NMO-STATICS-MUTE APPLICATION
- 8 CDP CONSIS. RESIDUAL STATICS
- 9 ZERO PHASE CONVERSION
- 10 FINITE DIFFERENCE MIGRATION
- 11 TIME VARIANT FILTER
- 12 RMS GAIN
- 13 PLAY BACK

Distance dependent mute:
300 M: 40 MS
395 M: 300 MS
1430 M: 850 MS

Stack reel at minimum phase
SEC Y CONVERTED

High order explicit algorithm
Velocity applied is 800 STK VEL

Vertical interpolation:
-200 MS: 20-60 HZ 24/48 DB
0 MS: 20-60 HZ 24/48 DB
1600 MS: 14-50 HZ 24/48 DB
3200 MS: 10-40 HZ 24/48 DB
5200 MS: 8-35 HZ 24/48 DB

Plot direction: 1 TO 8
Negative numbers = white troughs

LINE LOCATION MAP