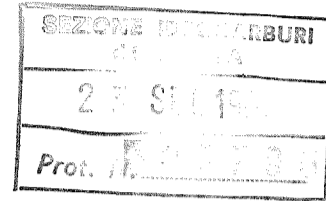


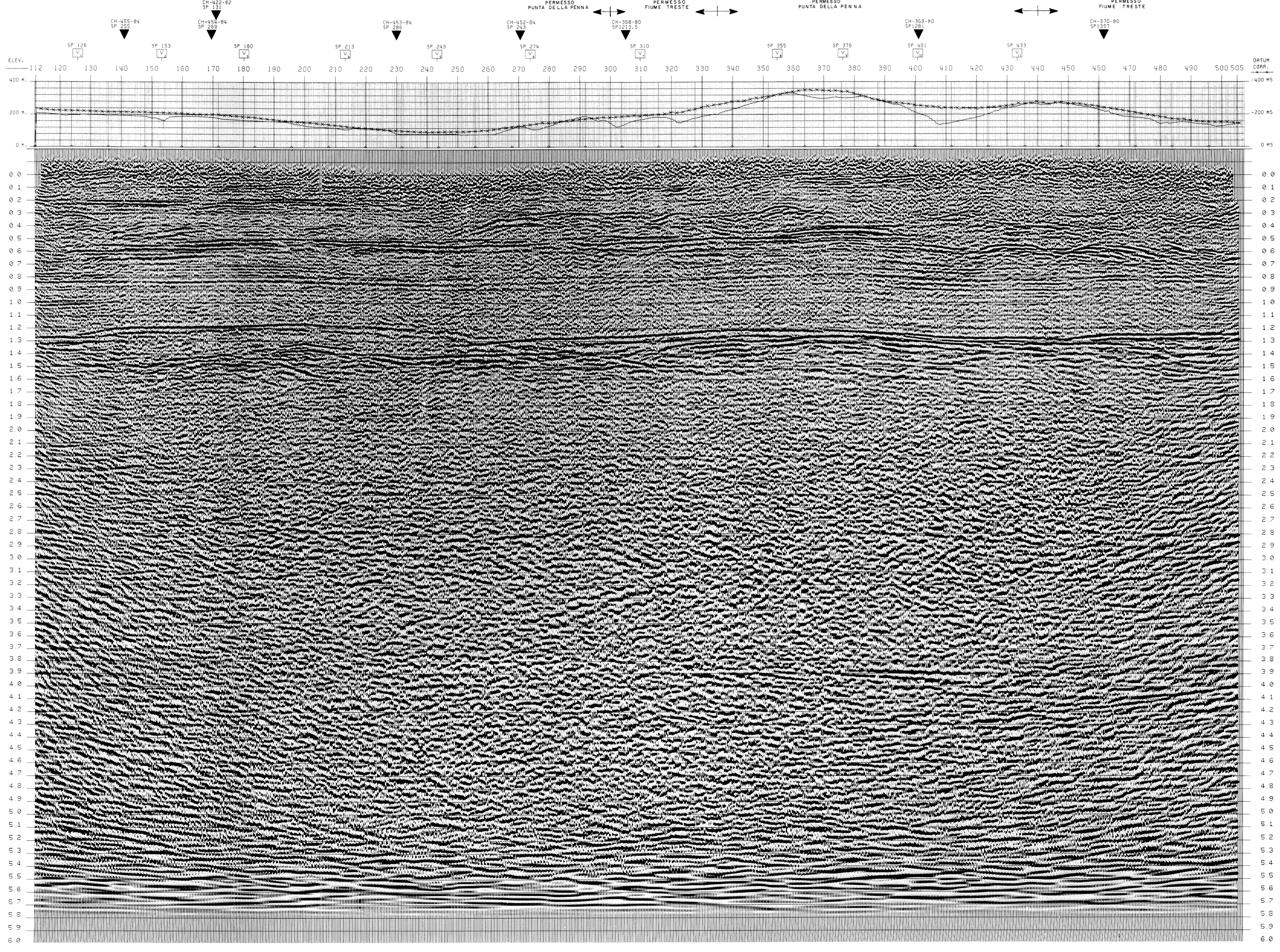
CH-451-84
S.P. 112 TO S.P. 505



800 PCT DBS-MIGR-TVF



SP	TIME	AMP	VEL	DIS	INT
125.50	0.00	0.00	0.00	0.00	0.00
125.50	0.05	0.05	0.05	0.05	0.05
125.50	0.10	0.10	0.10	0.10	0.10
125.50	0.15	0.15	0.15	0.15	0.15
125.50	0.20	0.20	0.20	0.20	0.20
125.50	0.25	0.25	0.25	0.25	0.25
125.50	0.30	0.30	0.30	0.30	0.30
125.50	0.35	0.35	0.35	0.35	0.35
125.50	0.40	0.40	0.40	0.40	0.40
125.50	0.45	0.45	0.45	0.45	0.45
125.50	0.50	0.50	0.50	0.50	0.50
125.50	0.55	0.55	0.55	0.55	0.55
125.50	0.60	0.60	0.60	0.60	0.60
125.50	0.65	0.65	0.65	0.65	0.65
125.50	0.70	0.70	0.70	0.70	0.70
125.50	0.75	0.75	0.75	0.75	0.75
125.50	0.80	0.80	0.80	0.80	0.80
125.50	0.85	0.85	0.85	0.85	0.85
125.50	0.90	0.90	0.90	0.90	0.90
125.50	0.95	0.95	0.95	0.95	0.95
125.50	1.00	1.00	1.00	1.00	1.00
125.50	1.05	1.05	1.05	1.05	1.05
125.50	1.10	1.10	1.10	1.10	1.10
125.50	1.15	1.15	1.15	1.15	1.15
125.50	1.20	1.20	1.20	1.20	1.20
125.50	1.25	1.25	1.25	1.25	1.25
125.50	1.30	1.30	1.30	1.30	1.30
125.50	1.35	1.35	1.35	1.35	1.35
125.50	1.40	1.40	1.40	1.40	1.40
125.50	1.45	1.45	1.45	1.45	1.45
125.50	1.50	1.50	1.50	1.50	1.50
125.50	1.55	1.55	1.55	1.55	1.55
125.50	1.60	1.60	1.60	1.60	1.60
125.50	1.65	1.65	1.65	1.65	1.65
125.50	1.70	1.70	1.70	1.70	1.70
125.50	1.75	1.75	1.75	1.75	1.75
125.50	1.80	1.80	1.80	1.80	1.80
125.50	1.85	1.85	1.85	1.85	1.85
125.50	1.90	1.90	1.90	1.90	1.90
125.50	1.95	1.95	1.95	1.95	1.95
125.50	2.00	2.00	2.00	2.00	2.00
125.50	2.05	2.05	2.05	2.05	2.05
125.50	2.10	2.10	2.10	2.10	2.10
125.50	2.15	2.15	2.15	2.15	2.15
125.50	2.20	2.20	2.20	2.20	2.20
125.50	2.25	2.25	2.25	2.25	2.25
125.50	2.30	2.30	2.30	2.30	2.30
125.50	2.35	2.35	2.35	2.35	2.35
125.50	2.40	2.40	2.40	2.40	2.40
125.50	2.45	2.45	2.45	2.45	2.45
125.50	2.50	2.50	2.50	2.50	2.50
125.50	2.55	2.55	2.55	2.55	2.55
125.50	2.60	2.60	2.60	2.60	2.60
125.50	2.65	2.65	2.65	2.65	2.65
125.50	2.70	2.70	2.70	2.70	2.70
125.50	2.75	2.75	2.75	2.75	2.75
125.50	2.80	2.80	2.80	2.80	2.80
125.50	2.85	2.85	2.85	2.85	2.85
125.50	2.90	2.90	2.90	2.90	2.90
125.50	2.95	2.95	2.95	2.95	2.95
125.50	3.00	3.00	3.00	3.00	3.00
125.50	3.05	3.05	3.05	3.05	3.05
125.50	3.10	3.10	3.10	3.10	3.10
125.50	3.15	3.15	3.15	3.15	3.15
125.50	3.20	3.20	3.20	3.20	3.20
125.50	3.25	3.25	3.25	3.25	3.25
125.50	3.30	3.30	3.30	3.30	3.30
125.50	3.35	3.35	3.35	3.35	3.35
125.50	3.40	3.40	3.40	3.40	3.40
125.50	3.45	3.45	3.45	3.45	3.45
125.50	3.50	3.50	3.50	3.50	3.50
125.50	3.55	3.55	3.55	3.55	3.55
125.50	3.60	3.60	3.60	3.60	3.60
125.50	3.65	3.65	3.65	3.65	3.65
125.50	3.70	3.70	3.70	3.70	3.70
125.50	3.75	3.75	3.75	3.75	3.75
125.50	3.80	3.80	3.80	3.80	3.80
125.50	3.85	3.85	3.85	3.85	3.85
125.50	3.90	3.90	3.90	3.90	3.90
125.50	3.95	3.95	3.95	3.95	3.95
125.50	4.00	4.00	4.00	4.00	4.00
125.50	4.05	4.05	4.05	4.05	4.05
125.50	4.10	4.10	4.10	4.10	4.10
125.50	4.15	4.15	4.15	4.15	4.15
125.50	4.20	4.20	4.20	4.20	4.20
125.50	4.25	4.25	4.25	4.25	4.25
125.50	4.30	4.30	4.30	4.30	4.30
125.50	4.35	4.35	4.35	4.35	4.35
125.50	4.40	4.40	4.40	4.40	4.40
125.50	4.45	4.45	4.45	4.45	4.45
125.50	4.50	4.50	4.50	4.50	4.50
125.50	4.55	4.55	4.55	4.55	4.55
125.50	4.60	4.60	4.60	4.60	4.60
125.50	4.65	4.65	4.65	4.65	4.65
125.50	4.70	4.70	4.70	4.70	4.70
125.50	4.75	4.75	4.75	4.75	4.75
125.50	4.80	4.80	4.80	4.80	4.80
125.50	4.85	4.85	4.85	4.85	4.85
125.50	4.90	4.90	4.90	4.90	4.90
125.50	4.95	4.95	4.95	4.95	4.95
125.50	5.00	5.00	5.00	5.00	5.00



SORI-AGIP

WESTERN RICERCHE GEOFISICHE MILAN - ITALY

AREA : ITALIA-ZONA 2
PROSPECT : PUNTA-DELLA-PENNA
PROSPECT : FIUME TRESTE

DATE SHOT : JUNE 1984
DATE PROCESSED : APRIL 1985

RECORDING DATA	PROCESSING SEQUENCE
PARTY NUMBER: 0108-4 RECORDING SYSTEM: SEC-8 RECORDING FILTER: LOW 10 HZ 24 DB/OCT ANTIALIAS FILTER: HI 105.7 HZ 62 DB/OCT RECORD LENGTH: 1000 MS SAMPLE RATE: 2 MS EMERGENCY SOURCE: DYNAMITE SUBSURFACE COVERAGE: 800 PCT GROUP INTERVAL: 30 M NUMBER OF GROUPS: 98 VELOCITY FROM STATE CORP.: 1100 M/S DATUM PLANE (ABOVE SEA LEVEL): 27 UPWARD GROUND MOTION = NEGATIVE NUMB. ON TAPE	1 DEMULTIPLEX GEO AMP, LMS SW, ... 2 PREFILTER 3 MINIMUM PHASE CONVERSION 4 PREPROCESSOR-DECON 5 SURF. CONSISTENT RESID. STATICS 6 VELOCITY ANALYSIS 7 NMO-STATICS-MUTE APPLICATION 8 COP CONSIST. RESIDUAL STATICS 9 ZERO PHASE CONVERSION 10 FINITE DIFFERENCE MIGRATION 11 TIME VARIANT FILTER 12 RMS GAIN 13 PLAY BACK

LEGEND
 VELOCITY ANALYSIS
 INTERSECTIONS

ANALYST: DATE: 4/2/85

LINE LOCATION MAP