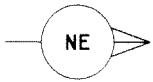


CH-448-84
S.P. 120 TO S.P. 259



800 PCT DBS-MIGR-TVF

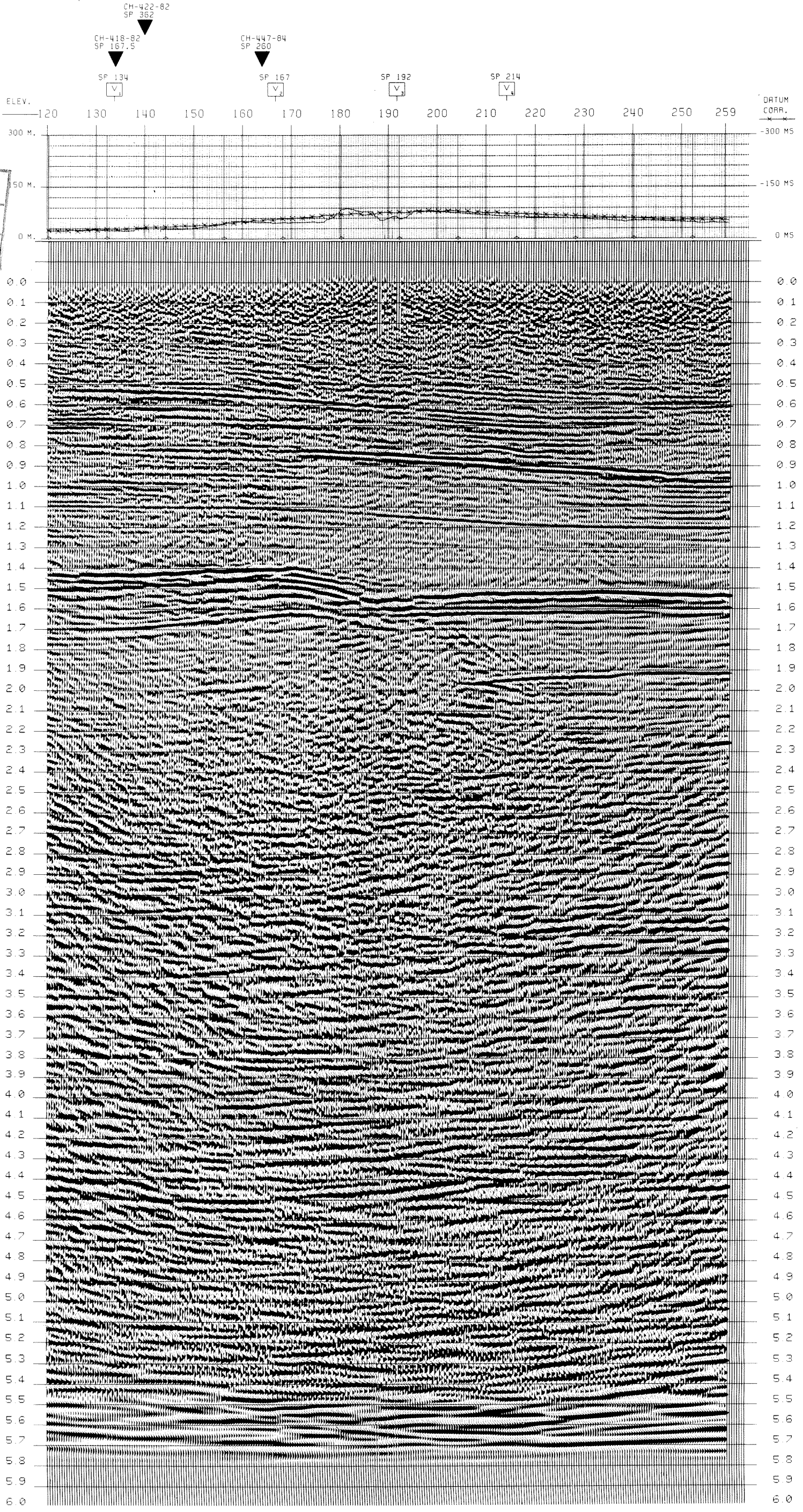
250
Profil. 403795

SP	TIME	RMS	VEL	DIV	INT
133.50	0.24	1810	1810		
	0.43	1990	2196		
	0.55	2090	2415		
	0.71	2150	2503		
	0.85	2300	2792		
	0.99	2360	2696		
	1.13	2510	3385		
	1.44	2660	3147		
	1.65	3150	5426		
	3.12	3680	4198		
	4.39	4010	4507		
	7.00	4500	5532		

SP	TIME	RMS	VEL	DIV	INT
166.50	0.33	1860	1860		
	0.43	1930	2145		
	0.53	1950	2084		
	0.62	2070	2625		
	0.74	2110	2305		
	0.88	2170	2463		
	0.98	2220	2562		
	1.20	2350	2848		
	1.44	2590	3555		
	1.67	2910	4414		
	2.12	3230	4210		
	3.48	3450	3767		
	5.00	3980	4966		
	7.00	4500	5592		

SP	TIME	RMS	VEL	DIV	INT
191.50	0.30	1910	1910		
	0.39	2030	2118		
	0.91	2200	2654		
	1.22	2400	3009		
	1.48	2600	3394		
	1.58	2710	3999		
	1.70	2860	4360		
	2.05	3320	4983		
	3.30	3510	3801		
	4.99	4010	4940		
	7.00	4500	5532		

SP	TIME	RMS	VEL	DIV	INT
214.00	0.23	1840	1840		
	0.59	2010	2162		
	0.71	2090	2446		
	0.79	2110	2280		
	0.90	2200	2761		
	0.96	2250	2898		
	1.24	2420	2929		
	1.60	2560	2993		
	1.69	2760	5151		
	2.02	3500	5098		
	3.23	3800	4254		
	5.00	4010	4367		
	7.00	4500	5538		



SORI

WESTERN RICERCHE GEOFISICHE

MILAN - ITALY

AREA : ITALIA-ZONA 2
PROSPECT : PUNTA-DELLA-PENNA

DATE SHOT APRIL 1984
DATE PROCESSED APRIL 1985

RECORDING DATA	PROCESSING SEQUENCE
PARTY NUMBER: GLOBE-4	1 DEMULTIPLEX GEO AMP. 4MS S.R.
RECORDING SYSTEM: SEC-8	2 PREFILTER
RECORDING FILTER: LHM: 10 HZ 24 DB/OCT	3 MINIMUM PHASE CONVERSION
ANTIALIAS FILTER: 106.7 HZ 62 DB/OCT	4 PREPROCESSOR-DECON
NOTCH FILTER: OUT	5 SURF. CONSISTENT RESID. STATICS
RECORD LENGTH: 7000 MS	6 VELOCITY ANALYSIS
SAMPLE RATE: 2 MS	7 NMO-STATICS-MUTE APPLICATION
ENERGY SOURCE: DYNAMITE	8 DISTANCE DEPENDENT MUTE
SUBSURFACE COVERAGE: 800 PCT	9 CDP CONS. RESIDUAL STATICS
GROUP INTERVAL: 30 M	10 ZERO PHASE CONVERSION
NUMBER OF GROUPS: 95	11 FINITE DIFFERENCE MIGRATION
VELOCITY FOR STAT CORR.: 1700 M/S	12 TIME VARIANT FILTER
DATUM PLANE (ABOVE SEA LEVEL): 0	13 RMS GAIN
UPWARD GROUND MOTION + NEGATIVE NUMB. ON TAPE	14 PLAY BACK

SPREAD DIMENSIONS: 1425M

GEOPHONE PATTERN: X=50M, Y=10M

S.P. PATTERN

SHOT HOLES/S.P.: 1
AVERAGE SHOT DEPTH: 30 M
AVERAGE SHOT CHARGE: 4 KG

LEGEND: V VELOCITY ANALYSIS, ▽ INTERSECTIONS

ANALYST: DATE: 1985

LINE LOCATION MAP: Shows the survey area with lines CH-448-84, CH-447-84, CH-446-84, CH-445-84, CH-444-84, CH-443-84, CH-442-84, CH-441-84, CH-440-84, CH-439-84, CH-438-84, CH-437-84, CH-436-84, CH-435-84, CH-434-84, CH-433-84, CH-432-84, CH-431-84, CH-430-84, CH-429-84, CH-428-84, CH-427-84, CH-426-84, CH-425-84, CH-424-84, CH-423-84, CH-422-84, CH-421-84, CH-420-84, CH-419-84, CH-418-84, CH-417-84, CH-416-84, CH-415-84, CH-414-84, CH-413-84, CH-412-84, CH-411-84, CH-410-84, CH-409-84, CH-408-84, CH-407-84, CH-406-84, CH-405-84, CH-404-84, CH-403-84, CH-402-84, CH-401-84, CH-400-84, CH-399-84, CH-398-84, CH-397-84, CH-396-84, CH-395-84, CH-394-84, CH-393-84, CH-392-84, CH-391-84, CH-390-84, CH-389-84, CH-388-84, CH-387-84, CH-386-84, CH-385-84, CH-384-84, CH-383-84, CH-382-84, CH-381-84, CH-380-84, CH-379-84, CH-378-84, CH-377-84, CH-376-84, CH-375-84, CH-374-84, CH-373-84, CH-372-84, CH-371-84, CH-370-84, CH-369-84, CH-368-84, CH-367-84, CH-366-84, CH-365-84, CH-364-84, CH-363-84, CH-362-84, CH-361-84, CH-360-84, CH-359-84, CH-358-84, CH-357-84, CH-356-84, CH-355-84, CH-354-84, CH-353-84, CH-352-84, CH-351-84, CH-350-84, CH-349-84, CH-348-84, CH-347-84, CH-346-84, CH-345-84, CH-344-84, CH-343-84, CH-342-84, CH-341-84, CH-340-84, CH-339-84, CH-338-84, CH-337-84, CH-336-84, CH-335-84, CH-334-84, CH-333-84, CH-332-84, CH-331-84, CH-330-84, CH-329-84, CH-328-84, CH-327-84, CH-326-84, CH-325-84, CH-324-84, CH-323-84, CH-322-84, CH-321-84, CH-320-84, CH-319-84, CH-318-84, CH-317-84, CH-316-84, CH-315-84, CH-314-84, CH-313-84, CH-312-84, CH-311-84, CH-310-84, CH-309-84, CH-308-84, CH-307-84, CH-306-84, CH-305-84, CH-304-84, CH-303-84, CH-302-84, CH-301-84, CH-300-84, CH-299-84, CH-298-84, CH-297-84, CH-296-84, CH-295-84, CH-294-84, CH-293-84, CH-292-84, CH-291-84, CH-290-84, CH-289-84, CH-288-84, CH-287-84, CH-286-84, CH-285-84, CH-284-84, CH-283-84, CH-282-84, CH-281-84, CH-280-84, CH-279-84, CH-278-84, CH-277-84, CH-276-84, CH-275-84, CH-274-84, CH-273-84, CH-272-84, CH-271-84, CH-270-84, CH-269-84, CH-268-84, CH-267-84, CH-266-84, CH-265-84, CH-264-84, CH-263-84, CH-262-84, CH-261-84, CH-260-84, CH-259-84, CH-258-84, CH-257-84, CH-256-84, CH-255-84, CH-254-84, CH-253-84, CH-252-84, CH-251-84, CH-250-84, CH-249-84, CH-248-84, CH-247-84, CH-246-84, CH-245-84, CH-244-84, CH-243-84, CH-242-84, CH-241-84, CH-240-84, CH-239-84, CH-238-84, CH-237-84, CH-236-84, CH-235-84, CH-234-84, CH-233-84, CH-232-84, CH-231-84, CH-230-84, CH-229-84, CH-228-84, CH-227-84, CH-226-84, CH-225-84, CH-224-84, CH-223-84, CH-222-84, CH-221-84, CH-220-84, CH-219-84, CH-218-84, CH-217-84, CH-216-84, CH-215-84, CH-214-84, CH-213-84, CH-212-84, CH-211-84, CH-210-84, CH-209-84, CH-208-84, CH-207-84, CH-206-84, CH-205-84, CH-204-84, CH-203-84, CH-202-84, CH-201-84, CH-200-84, CH-199-84, CH-198-84, CH-197-84, CH-196-84, CH-195-84, CH-194-84, CH-193-84, CH-192-84, CH-191-84, CH-190-84, CH-189-84, CH-188-84, CH-187-84, CH-186-84, CH-185-84, CH-184-84, CH-183-84, CH-182-84, CH-181-84, CH-180-84, CH-179-84, CH-178-84, CH-177-84, CH-176-84, CH-175-84, CH-174-84, CH-173-84, CH-172-84, CH-171-84, CH-170-84, CH-169-84, CH-168-84, CH-167-84, CH-166-84, CH-165-84, CH-164-84, CH-163-84, CH-162-84, CH-161-84, CH-160-84, CH-159-84, CH-158-84, CH-157-84, CH-156-84, CH-155-84, CH-154-84, CH-153-84, CH-152-84, CH-151-84, CH-150-84, CH-149-84, CH-148-84, CH-147-84, CH-146-84, CH-145-84, CH-144-84, CH-143-84, CH-142-84, CH-141-84, CH-140-84, CH-139-84, CH-138-84, CH-137-84, CH-136-84, CH-135-84, CH-134-84, CH-133-84, CH-132-84, CH-131-84, CH-130-84, CH-129-84, CH-128-84, CH-127-84, CH-126-84, CH-125-84, CH-124-84, CH-123-84, CH-122-84, CH-121-84, CH-120-84.