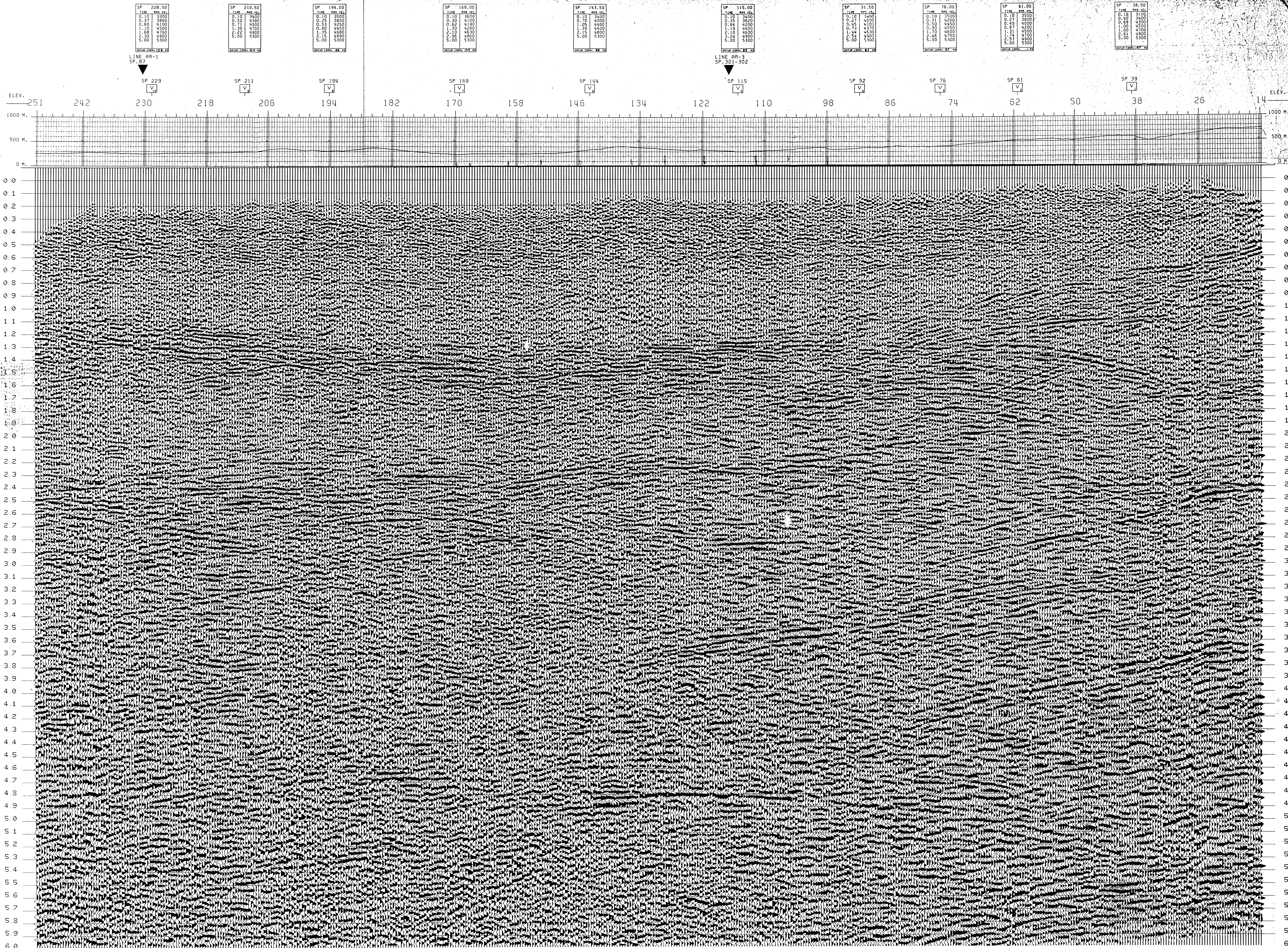


600PCT DBS-STK-TVF

REPLAC. VELOC. AND PLANE  
MODIFIED  
REPLAC. VELOC. VARIABLE



**PETREX**  
WESTERN RICERCH GEOFISICHE  
MILAN - ITALY

ITALIA-ZONA 2  
PROSPECT AREZZO-VALLOMBROSA

DATE SHOT: OCTOBER, 1978  
DATE REPROCESSED: JULY, 1988

| RECORDING DATA  | PROCESSING SEQUENCE  |
|---|--|
| STATICS COMPUT. VELOC. (FIELD) 4000 M/SEC<br>NEW DATUM PLANE = 500M ASL   | DEMULIPLY GEGPH. AMPL. UMS S.R.  |
| INSTRUMENTS<br>CONTRACTOR: SING<br>PART NUMBER: 6131<br>RECORDING SYSTEM: 12HZ<br>RECORDING FILTERS: 50HZ<br>SAMPLE RATE: 5 MS<br>RECORD LENGTH: 6 SEC            | PROCESSOR LENGTH: 6 SEC<br>NOTCH FILTER: 50 HZ<br>PREPROCESSOR: D.B.S.   |
| SOURCE<br>ENERGY SOURCE: EXPLOSIVES<br>SHOT NO.: 15<br>AVERAGE CHARGE PER SHOT: 15 KG<br>AVERAGE SHOT DEPTH: 20 M<br>UPWARD GROUND MOTION-NEGATIVE NUMBER ON TAPE | STRETCH DEPENDENT MUTE<br>AUTOMATIC RESIDUAL STATICS   |
| SPREAD CONFIGURATION<br>NUMBER OF GROUPS: 48<br>GROUP INTERVAL: 50 M<br>SUBSURFACE COVERAGE: 600 PCT  | FINAL VELOCITY ANALYSIS<br>N.M.D. - 600PCT STR   |
| SIMULATION OF LINE<br>DIRECTION OF LINE: NORTHWEST  | REPLAC. VELOC. CHANGE<br>VELOCITY USED = VARIABLE<br>SEL VELOCITY MAP  |
| GEOPHONE PER GROUP: 24<br>GEOPHONE TYPE: SENSOIR 504<br>GEOPHONE FREQUENCY: 10 HZ   | DATUM PLANE CHANGE<br>DATUM PLANE CONVERTED FROM 0 SL TO 500M ASL  |
| LEGEND<br>VELOCITY ANALYSIS<br>INTERSECTIONS<br>ANALYST: <i>Alfano</i> DATE: <i>2/80</i>  | TIME VARIANT FILTER<br>TIME DECS: L.F. HET. OBJECT H.C.<br>0.500 15/24 60/48<br>2.500 12/24 30/48<br>5.000 8/24 30/48<br>FILTERS ARE INTERPOLATED IN TIME AND SPACE.<br>TIMES ARE SPECIFIED AT START OF LINE |

