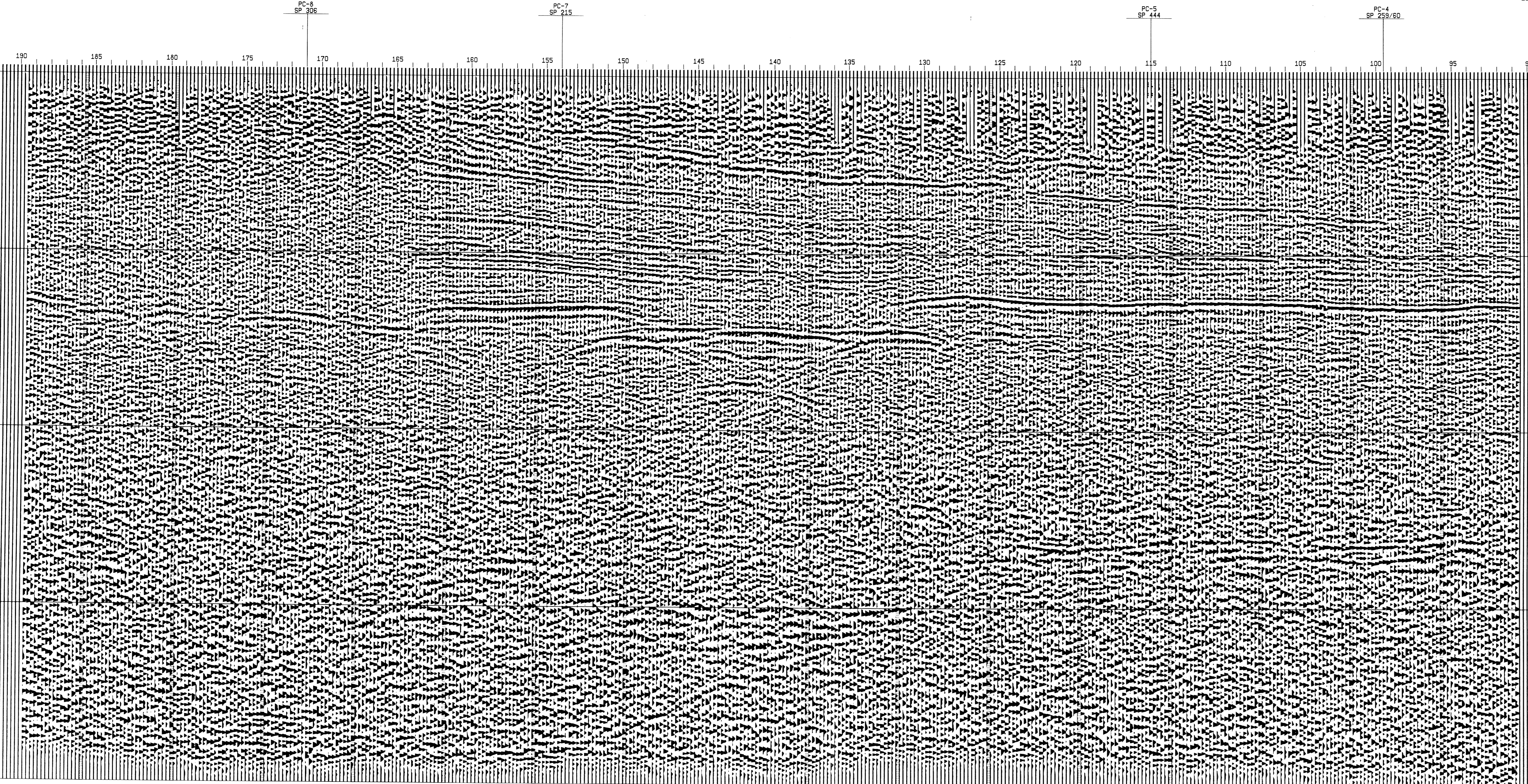
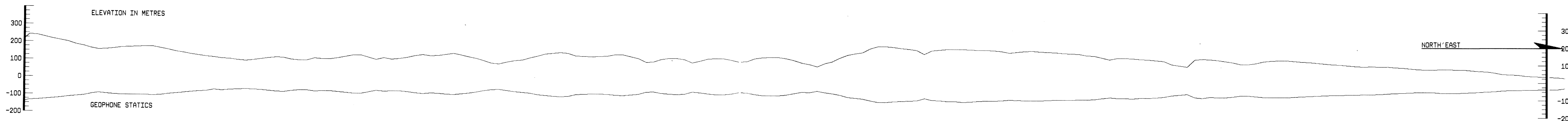


TIME	V-RMS
0	1700
300	1900
600	2250
900	2400
1200	2500
1500	2600
1800	2800
2100	3000
2400	3200
2700	3400
3000	3600
3300	3800
3600	4000
3900	4200
4200	4400
4500	4600
4800	4800
5100	5000

TIME	V-RMS
0	1800
300	2100
600	2300
900	2500
1200	2600
1500	2800
1800	3000
2100	3200
2400	3400
2700	3600
3000	3800
3300	4000
3600	4200
3900	4400
4200	4600
4500	4800
4800	5000

TIME	V-RMS
0	1800
300	1900
600	2100
900	2300
1200	2500
1500	2600
1800	2800
2100	3000
2400	3200
2700	3400
3000	3600
3300	3800
3600	4000
3900	4200
4200	4400
4500	4600
4800	4800
5100	5000

TIME	V-RMS
0	1500
300	1700
600	1900
900	2150
1200	2300
1500	2400
1800	2500
2100	2600
2400	2800
2700	3000
3000	3200
3300	3400
3600	3600
3900	3800
4200	4000
4500	4200
4800	4400
5100	4600



SECTION APPROVED BY

C.P.I.

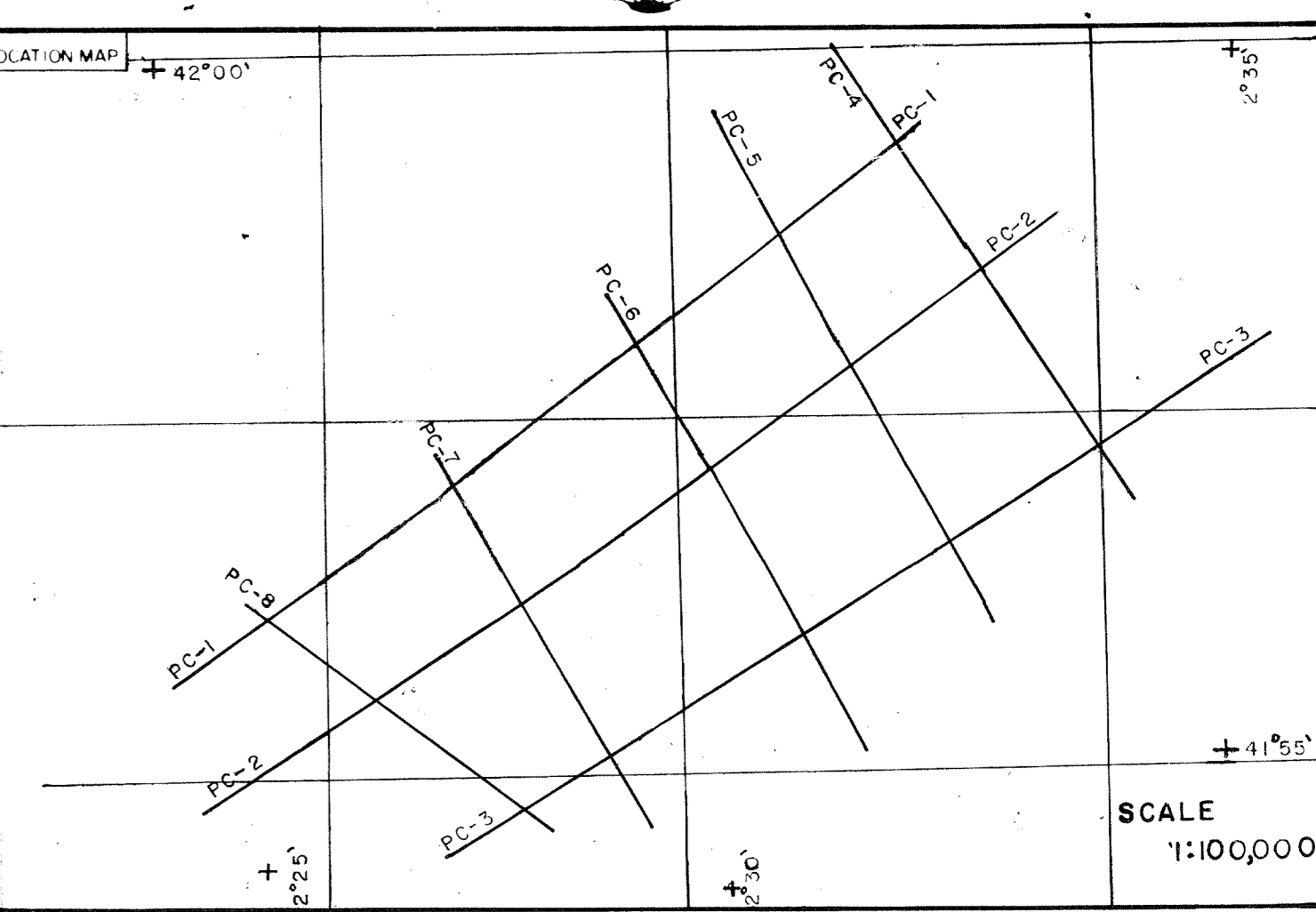
COUNTRY: ITALY. PROSPECT: P.CANNONE.

LINE: PC-2

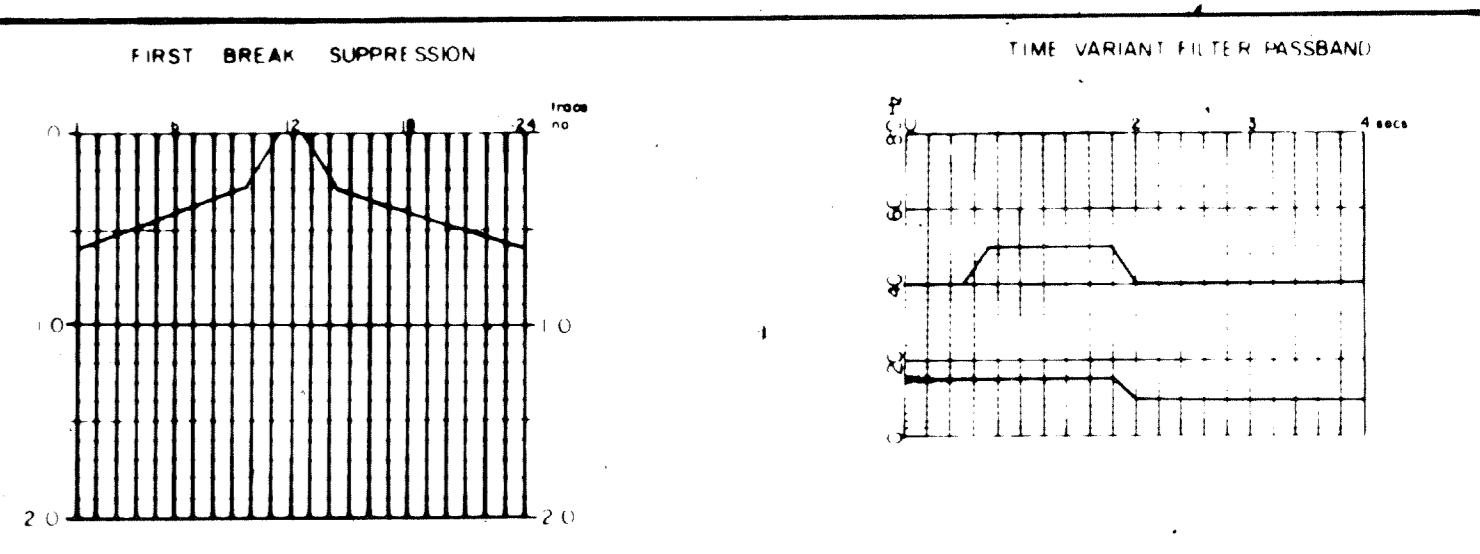
SP: 90 to SP: 190

DECONVOLVED & FILTERED STACK

GEOPHYSICAL SERVICE INTERNATIONAL LIMITED
CROYDON ENGLAND



- DIGITAL PROCESSING SEQUENCE
- | | |
|----------------------------|---------------------------------------|
| 1. TAR | 7. RESIDUAL STATICS — AUTOMATIC |
| 2. CDP GATHER | 8. 6 FOLD STACK |
| 3. TVS 250ms GATES | 9. TIME VARIANT DECONVOLUTION - 16pts |
| 4. VELOCITY ANALYSIS — CVS | 10. TIME VARIANT FILTER |
| 5. NMO | 11. TIME VARIANT SCALING |
| 6. REVISED FIELD STATICS | 12. DISPLAY GAIN 4db |



DISPLAY NUMBER **PC-2-1A** DATE **NOV 1974**

PROCESSING PARTY **682-D-10** GROUP LEADER **R EVANS**

FIELD PARTY **A-105 SIAG** DATE SHOT **SEPT 1974**

DATUM CORRECTIONS

DATUM PLANE SEA LEVEL INTERMEDIATE VELOCITY

WEATHERING VELOCITY SUBWEATHERING VELOCITY 2000 m/sec

FIELD RECORDING PARAMETERS

INSTRUMENTS 10k OPS	FILTERS 12 - 92 Hz
TAPE FORMAT T1AC	TAPE WIDTH 1"
CHAIN MODE AGC	SAMPLE PERIOD 2ms
SPREAD 975-150-150-975m	
SHOT SOURCE DYNAMITE	SEISMOMETERS/GROUP 24
HOLE DEPTH 18 - 21m	SEISMOMETER INTERVAL
NO OF HOLES 1	GROUP INTERVAL 75m
CHARGE/HOLE 5KG	SEISMOMETER TYPE 14Hz
TOTAL CHARGE 5KG	