

MULTIPLICITY

LINE: PE-414-88

CDP 119 TO CDP 909

NORTHWEST

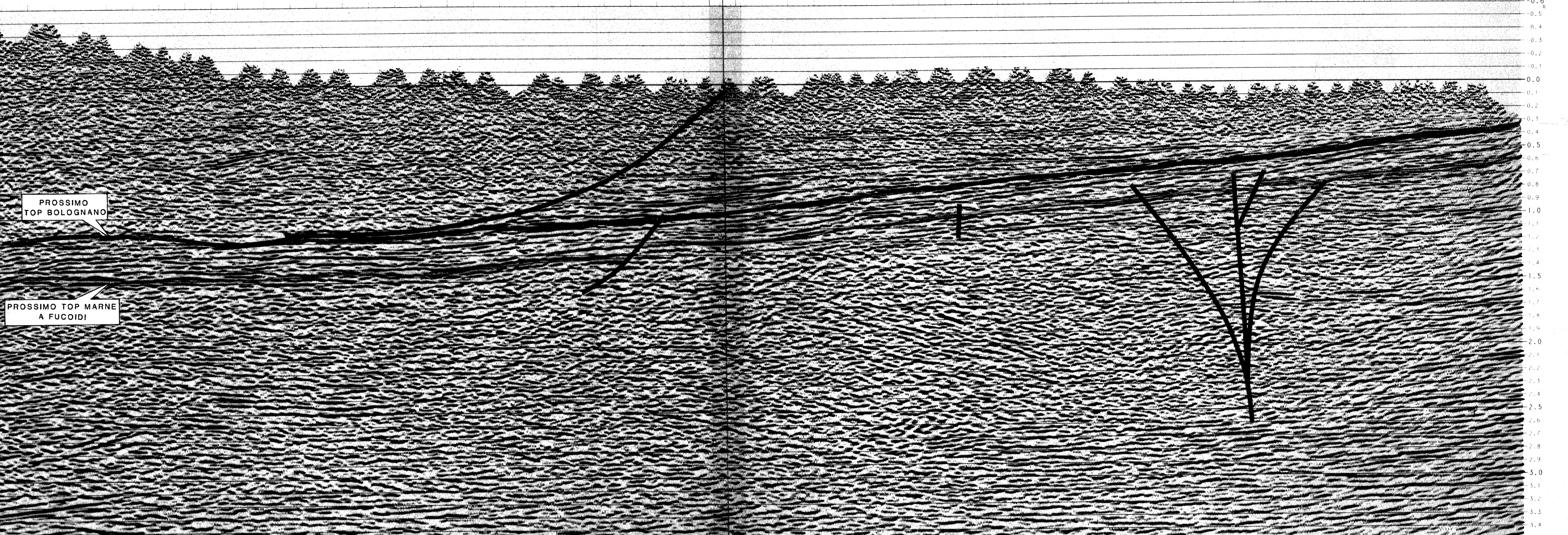
MIGRATION TVF



Allegato 2 Data AGOSTO 1989 Dis.n. 444/20

Table with multiple columns of station data, including station numbers (e.g., ST 375.0, ST 375.5) and associated numerical values.

Station labels and coordinates: PE-326-82 STA 301, PE-327-82 STA 164, PE-400-86 STA 101, PE-328-82 STA 185, PE-339-82 STA 393, PE-131 ME STA 13.7, PE-413-88 STA 169, PE-329-82 STA 259, PE-311-81 STA 128, PE-331-82 STA 261, PE-351-83 STA 225, PE-332-82 STA 308, I-77-NC5ILF1 STA 180, PE-411-88 STA 349, PE-348-83 STA 166, PE-334-82 STA 404, PE-14 STA 713, PE-361-83 STA 153, PE-352-83 STA 181.



PROSSIMO TOP BOLOGNANO

PROSSIMO TOP MARNE A FUCOIDI



AREA: ITALY: ONSHORE PIETRANICO

WESTERN GEOPHYSICAL logo and contract details: W.G.C. CONTRACT AUGUST 1988, DATE SHOT OCTOBER 1988, SHOT BY GLOBE EXPLORATION CREW 63, PROCESSED IN LOC

Technical specifications and processing parameters including: RECORDING DATA, PROCESSING SEQUENCE, AREA MAP, SCALES, LEGEND, and various processing steps like DEMULTIPLEX, PREPROCESSOR, and TIME-VARIANT FILTER.