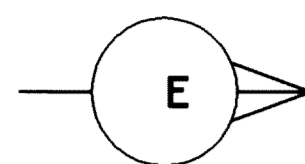


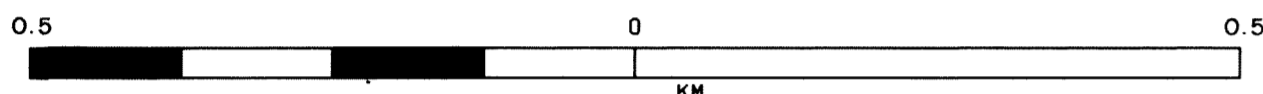
PE-395-86H

PE 107 TO PE 202



3000PCT DBS-TVF

SEZIONE IDROCARBURI di R.C.T.A. 11 MAG.1987 Prot. N. 02142 III-262-I



TIME	RMS VEL
0.08	2220
0.16	2410
0.29	2710
0.56	3080
0.69	3270
1.22	3570
3.00	4110

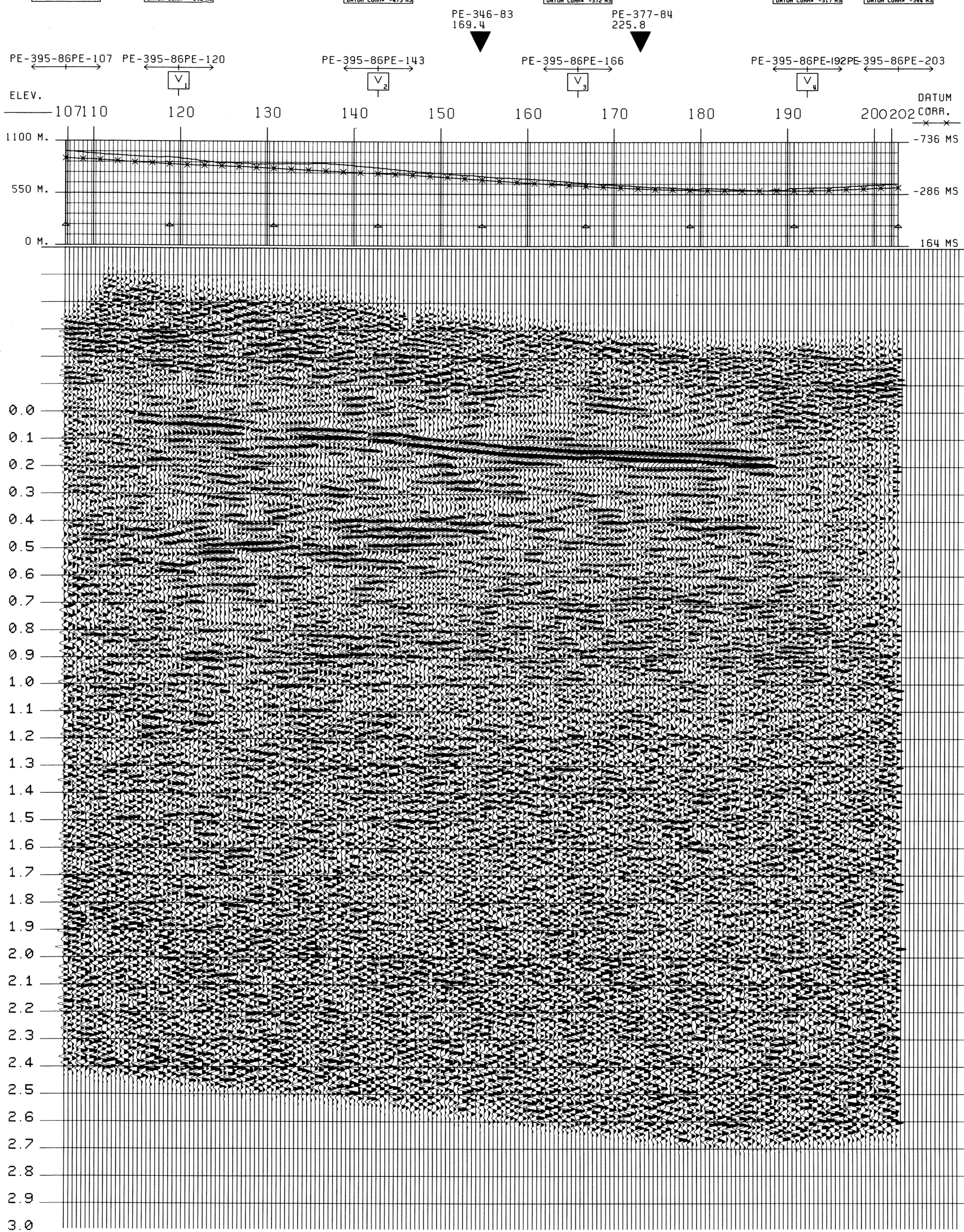
TIME	RMS VEL
0.08	2220
0.16	2410
0.29	2710
0.56	3080
0.69	3270
1.22	3570
3.00	4110

TIME	RMS VEL
0.06	2330
0.30	2980
0.44	3210
0.57	3480
0.90	3660
3.00	4090

TIME	RMS VEL
0.10	2470
0.27	2880
0.50	3480
0.75	3610
1.21	3790
3.00	4090

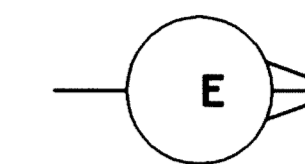
TIME	RMS VEL
0.10	2380
0.46	2950
0.80	3380
1.07	3520
2.99	4130

TIME	RMS VEL
0.10	2380
0.46	2950
0.80	3380
1.07	3520
2.99	4130

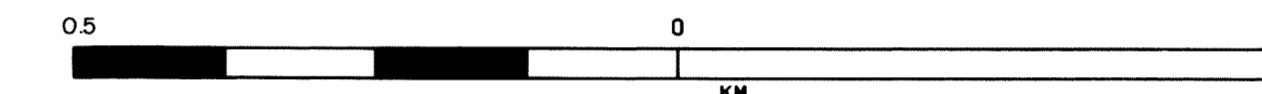


PE-395-86H

PE 107 TO PE 202



3000PCT DBS-TVF



AGIP

WESTERN RICERCHE GEOFISICHE MILAN - ITALY

AREA ITALIA-ZONA 2 PROSPECT PIETRANICO

DATE SHOT MAY, 1986 DATE PROCESSED JULY, 1986

RECORDING DATA

PROCESSING SEQUENCE

RECORDING DATA details: PARTY NUMBER F-5, RECORDER COBRA 11, GAIN 1.5 P, RECORDING FILTER (HZ) 12-180, NOTCH FILTER (HZ) OUT, RECORD LENGTH 3 SEC, SAMPLE RATE (KHZ) 2, SUBSURFACE COVERAGE 3000 PCT, GROUP INTERVAL (METERS) 20, NUMBER OF GROUPS 60, WEATHERING VELOCITY 600 M/S, STATIC COMPUTATION VELOCITY 2700 M/S, DATUM PLANE (ABOVE SEA LEVEL) 200, UPWARD GROUND MOTION = NEGATIVE NUMB. ON TAPE

PROCESSING SEQUENCE details: 1 EDIT GEO. AMPL. S.R.=2(MS), 2 TIME VARIANT PREFILTER, 3 RMS GAIN, 4 MINIMUM PHASE SHAPING, 5 PREPROCESSOR/DECON, 6 SURF. CONSISTENT RESID. STATICS, 7 VELOCITY ANALYSIS, 8 NMO. STATICS. MUTE APPLICATION, 9 SURF. CONSISTENT RESID. STATICS, 10 COP. CONSISTENT RESID. STATICS, 11 DIP. MOVE OUT, 12 STACK 3000PCT, 13 ZERO PHASE SHAPING, 14 RADIAL PREDICTIVE FILTER, 15 TIME VARIANT FILTER, 16 RMS GAIN

SEISMOMETER ARRAY diagram showing station layout

GEOPHONE TYPE SH7GT, GEOPHONE FREQUENCY 30 HZ, GEOPHONE/GROUP 12, X = 10 M, Y = 20 M

P.E. PATTERN diagram showing pulse sequence

ENERGY SOURCE HYDRAPULSE, N. POPS 5X1, X = 20 M, 2 Y = .85 M

SPREAD DIMENSIONS diagram showing 30m, 31m, 60m spread

CENTRE OF SOURCE ARRAY, DIRECTION OF LINE EAST

LEGEND: VELOCITY ANALYSIS, INTERSECTIONS

DECON TYPE MINIMUM PHASE INVERSE FILTER, NO. OF WINDOWS 2, WINDOW LENGTH 1200, MIN. PRED. DIST 2-110MS ON 1ST WINDOW, MIN. PRED. DIST 2-110MS ON 2ND WINDOW

DISTANCE DEPENDENT MUTE, DIST. (M) 59 79 580, MUTE (MS) 40 120 460

FAN PASS +/- 6MLS/TR, FEED BACK 75% - 90%

STK VELOCITY REDUCED BY 15%

VERTICAL INTERPOLATION, 0.1 20-90 HZ 18/48DB, 1.0 20-70 HZ 18/48DB, 3.0 16-60 HZ 18/48DB

PLOT DIRECTION L TO R, NEGATIVE NUMBERS = WHITE TROUGHS

AGIP

WESTERN RICERCHE GEOFISICHE MILAN - ITALY

AREA ITALIA-ZONA 2 PROSPECT PIETRANICO

DATE SHOT MAY, 1986 DATE PROCESSED JULY, 1986

RECORDING DATA

PROCESSING SEQUENCE

LEGEND: VELOCITY ANALYSIS, INTERSECTIONS, ANALYST, DATE

