

SW

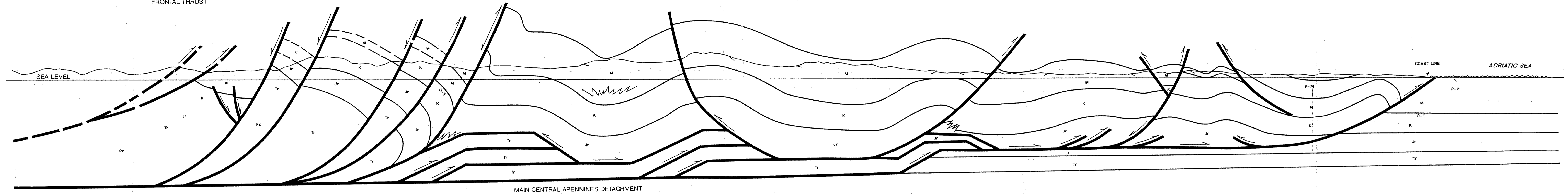
NE

LINE OF SECTION TRAVERSES UMBRIA-MARCHE THRUST BELT AT 50° NE OF PERPENDICULAR, CONSEQUENTLY THE FRONTAL THRUST DIPS AT LOWER APPARENT ANGLE THAN TRUE.

CENTRAL APENNINES THRUST BELT

ACCUMULI. PIETRACAMELA APPLICATION AREA

UMBRIA-MARCHE FRONTAL THRUST



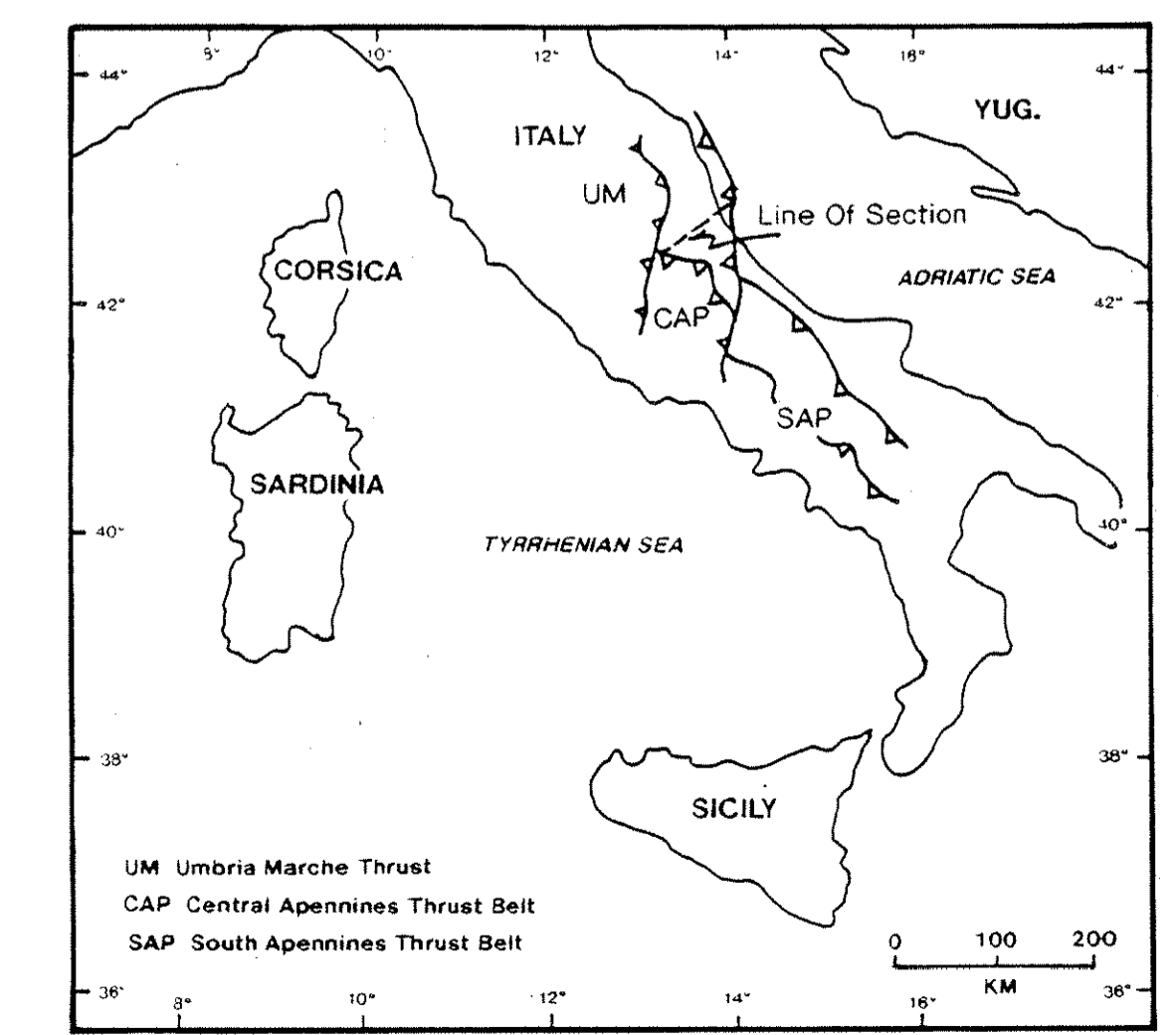
MAIN CENTRAL APENNINES DETACHMENT

EXPLANATION

- THRUST FAULT
- NORMAL FAULT
- Q** QUATERNARY
- R** RECENT
- P-Pl** PLIOCENE-PLEISTOCENE
- M** MIOCENE
- O-E** OLIGOCENE-EOCENE
- K** CRETACEOUS
- Jr** JURASSIC
- Tr** TRIASSIC
- Pz** PALEOZOIC
- DISHARMONIC FOLDING

SCALE 1:100,000 (HORIZONTAL & VERTICAL)

SOURCE OF INFORMATION: GEOLOGIC MAPS 1:100,000 SCALE FOGGIO'S 133-134, 139 & 140 SERVICIO GEOLOGICO DI ITALIA



THE ANSCHUTZ OVERSEAS CORPORATION

STRUCTURAL CROSS SECTION

CENTRAL APENNINES

ANSCHUTZ ITALIANA PETROLI S.p.A.

PROJECT:	AUTHOR: D.D. LINDSEY	DWG. DATE: 5-4-94	FILE: A2530
	REVISED DATE:		