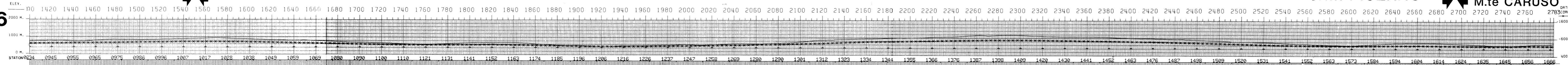


# LINEA PZ-554-86

DATA FEBBRAIO '89  
DISEGNO N° 301 F/1  
FIGURA 2

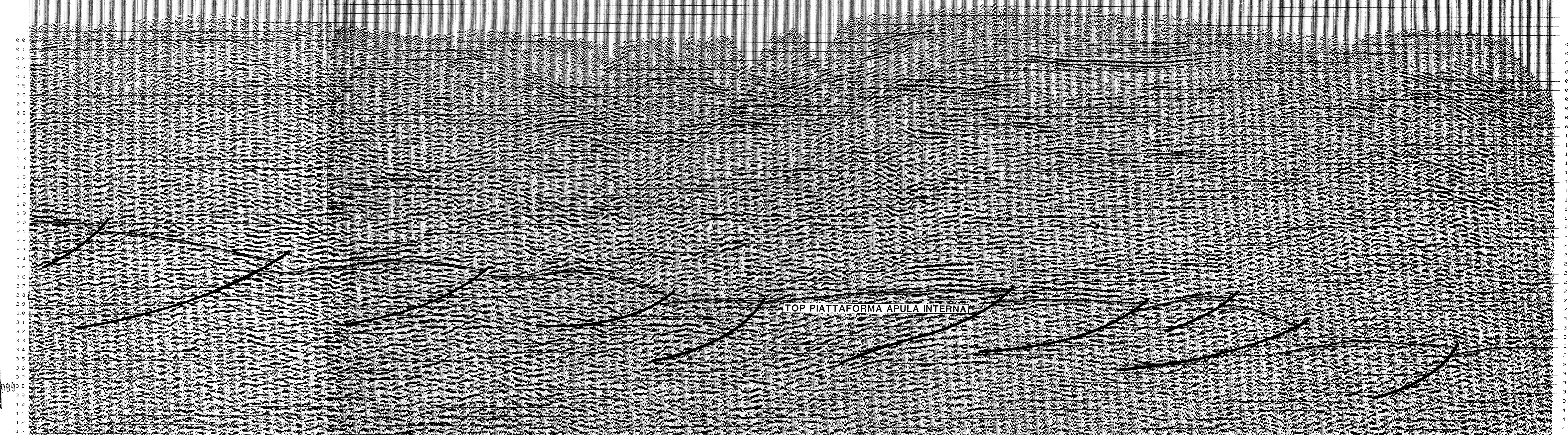
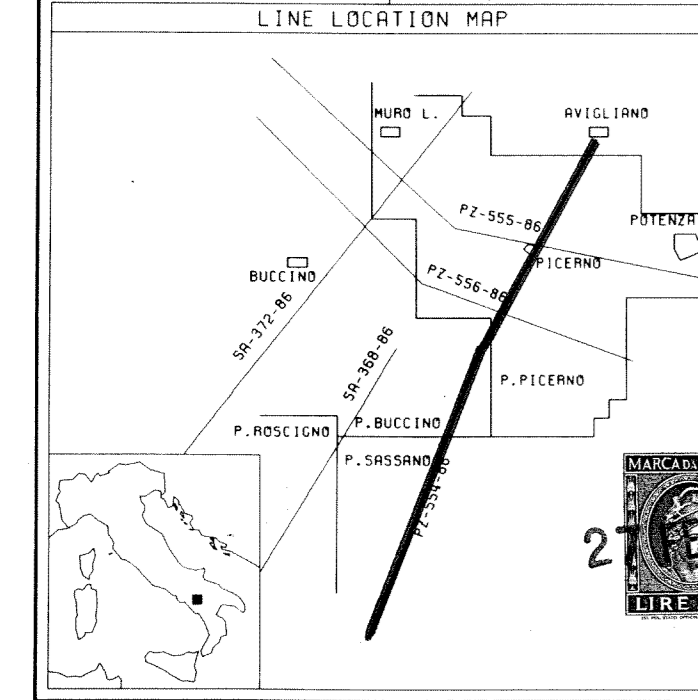


**AGIP**  
WESTERN RICERCHE GEOFISICHE  
MILAN - ITALY

ITALIA ZONA N  
PROSPECT BUCCINO PICERNO

DATE SHOT: NOVEMBER 1988  
DATE PROCESSED: JANUARY 1989

RECORDING DATA	PROCESSING SEQUENCE
<b>GEOPHON PATTERN</b> GEOPHON PER GROUP: 24 GEOPHON TYPE: 16 Hz GEOPHON FREQUENCY: 16 Hz X = 1.34 Y = 30M	<b>RESULTS FILES</b> PROCESSED LENGTH: 2 SEC DATE:
<b>SPREAD CONFIGURATION</b> NUMBER OF GROUPS: 24 GROUP INTERVAL: 100 M SURFACE COVERAGE: 100%	<b>PREL. VELOC. ANALYSIS</b> N.M.D. - ISOPECT PREL. STACK STRETCH DEPENDENT RATE
<b>LEGEND</b> <input checked="" type="checkbox"/> VELOCITY ANALYSIS <input type="checkbox"/> INTERSECTIONS ANALYST: Affinito DATE: 09/89	<b>FINAL VELOCITY ANALYSIS</b> N.M.D. - ISOPECT STA STRETCH DEPENDENT RATE SURF. CONSISTENT RESIDUAL STATICS 100 PCT SURF.



TOP PIATTAFORMA APULA INTERNA

