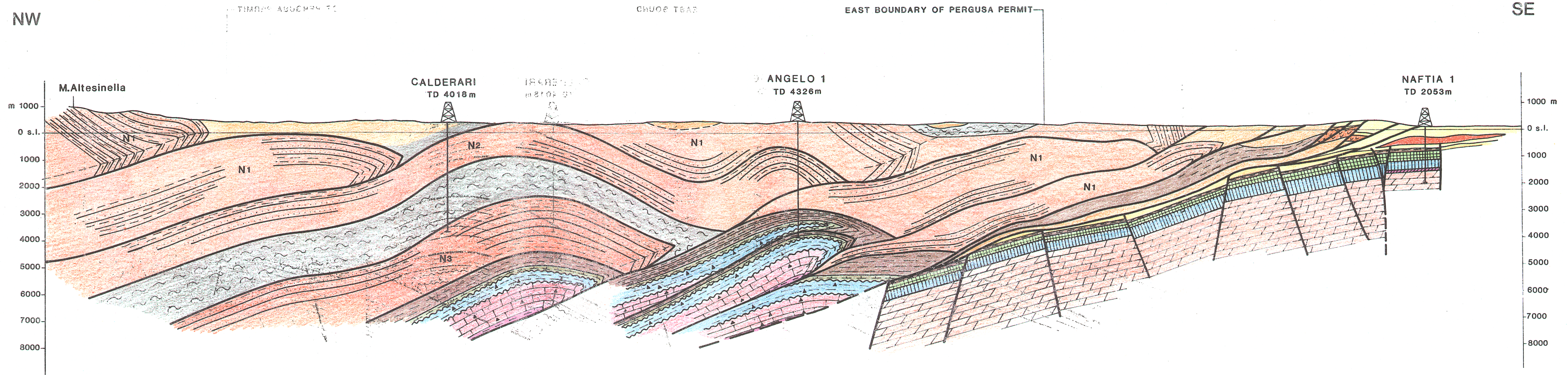


A  
NW

A'  
SE



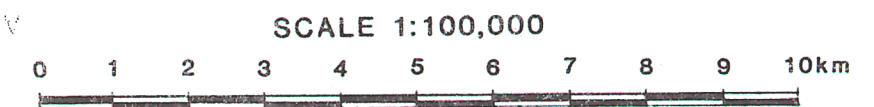
Post Tectonic series — Imerese facies

"Siracusa" zone facies

- VOLCANICS
- M-U PLIOCENE, QUATERNARY
- L PLIOCENE
- U MIOCENE "GESSOSO SOLFIFERA" FM

- Tortonian "TERRAVECCHIA" FM
- VARIEGATED SHALE OLIGOCENE-CRET.
- M MIOCENE-OLIGOCENE "NUMIDIAN FLYSCH" (N1-N2-N3)
- L MIOCENE-OLIGOCENE "BONIFATO" FM
- L OLIGOCENE-Eocene "GALTAVUTURO" FM
- M JURASSIC "CRISANTI" FM
- U TRIASSIC "SCILLATO" FM
- U TRIASSIC "MUFARA" FM

- L MIOCENE-OLIGOCENE "RAGUSA" FM
- CRETACEOUS "AMERILLO-HYBLA-CHIAROMONTE" FMTS
- JURASSIC "SIRACUSA-BUCCHERI" FMTS
- U TRIASSIC "STREPPENOSA" FM
- U TRIASSIC "GELA" FM



LASMO International Oil Development Ltd - ROME  
**PERGUSA PERMIT - Structural model (Intra-unit faulting omitted)**

Fig. 8