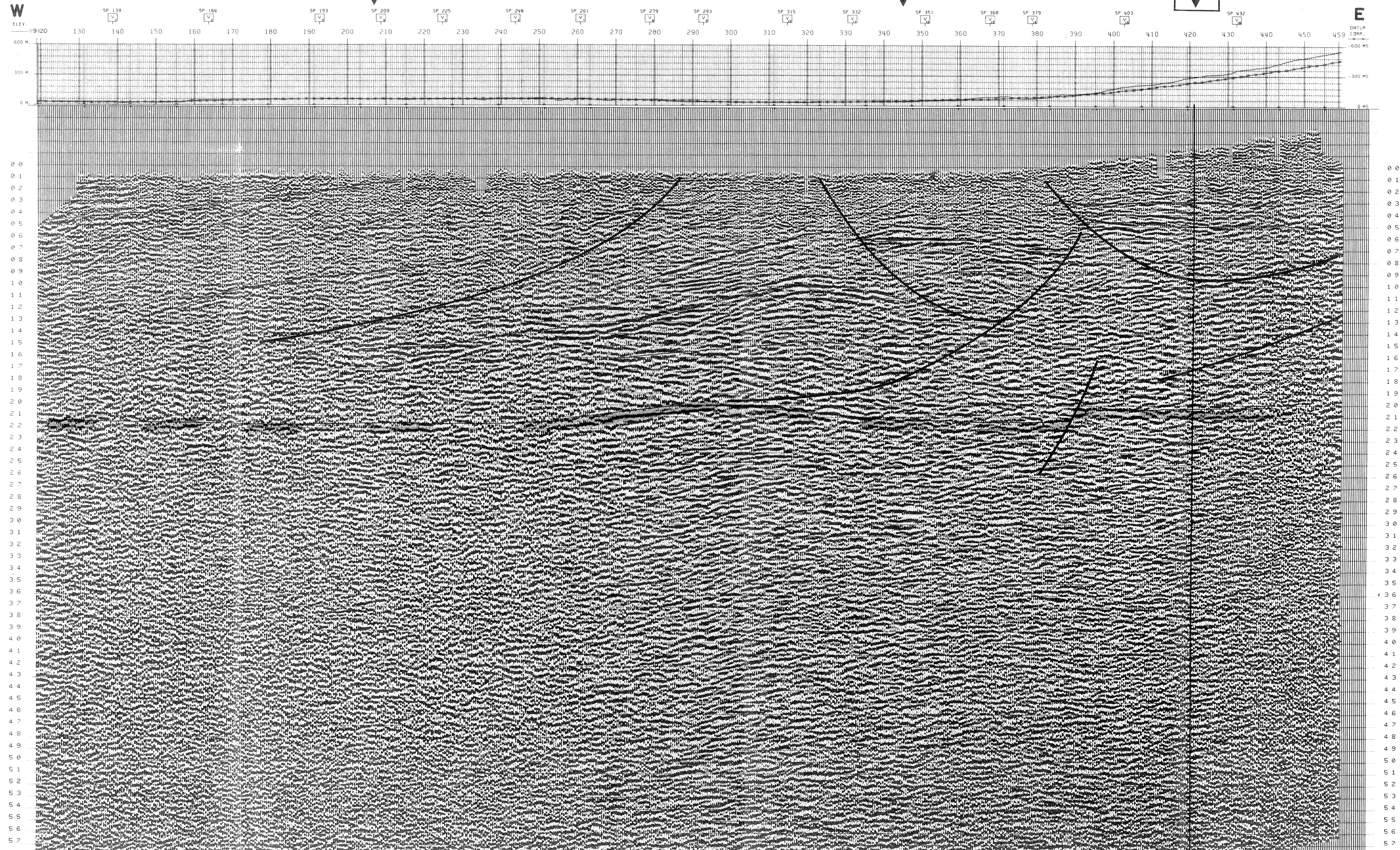


1-86-PA-12
S.P. 119 TO S.P. 459



1000 PCT
OBS-DMO-TVF

SP 138.50	SP 163.50	SP 182.50	SP 208.50	SP 224.50	SP 243.50	SP 260.50	SP 278.50	SP 292.50	SP 314.50	SP 331.50	SP 350.50	SP 367.50	SP 378.50	SP 402.50	SP 432.00
0.22 2100 2100 0.15 2110 2100 0.81 2510 2002 0.81 2500 2004 1.35 3030 4018 1.78 3710 5151 2.01 3910 5161 2.35 4180 5597 2.22 4200 5211 3.90 4990 5322 4.77 4950 5114	0.16 2090 2090 0.39 2260 2419 0.51 2610 3951 0.71 2800 3152 1.25 3370 4822 1.88 3910 4521 2.15 3910 4863 2.39 4180 5231 2.26 4200 5210 4.03 4960 5298 4.80 4920 5124	0.13 2100 2100 0.28 2270 2428 0.49 2680 2661 0.61 2850 3121 1.14 3180 4958 1.31 3260 4911 1.58 3600 4970 1.89 4050 5262 2.31 4260 5289 2.48 4380 4827 4.49 4950 5181	0.20 2400 2400 0.50 2620 2751 0.76 2890 3319 1.02 3070 3582 1.30 3400 4075 1.58 3600 4970 2.27 3970 5119 2.51 4050 4981 4.49 4950 5181	0.22 2400 2400 0.50 2620 2751 0.97 2790 2979 1.22 3000 3217 1.86 3280 4337 1.98 3340 4286 2.20 3600 4164 2.51 4050 4981 3.74 4710 5610 4.79 4970 5802	0.18 2400 2400 0.50 2620 2751 0.58 2710 2869 0.80 2810 3224 1.19 3110 3599 1.38 3260 4074 1.58 3400 4970 2.20 3600 4164 2.51 4050 4981 3.25 4130 4223 4.52 4930 5632	0.20 2400 2400 0.50 2620 2751 0.76 2890 3319 1.02 3070 3582 1.30 3400 4075 1.58 3600 4970 2.27 3970 5119 2.51 4050 4981 4.49 4950 5181	0.18 2400 2400 0.50 2620 2751 0.76 2890 3319 1.02 3070 3582 1.30 3400 4075 1.58 3600 4970 2.27 3970 5119 2.51 4050 4981 4.49 4950 5181	0.12 2510 2510 0.16 2590 2690 0.40 2810 3081 0.68 3180 3562 0.98 3470 3951 1.21 3760 4242 1.49 3970 4524 1.69 4110 4652 2.08 4310 4911 2.26 4380 5013 3.60 4820 5287 3.60 4820 5287 4.89 4820 5587	0.12 2510 2510 0.16 2590 2690 0.40 2810 3081 0.68 3180 3562 0.98 3470 3951 1.21 3760 4242 1.49 3970 4524 1.69 4110 4652 2.08 4310 4911 2.26 4380 5013 3.60 4820 5287 3.60 4820 5287 4.89 4820 5587	0.16 2590 2690 0.21 2760 2929 0.40 3110 3593 0.61 3490 3982 0.78 3620 4179 1.07 3980 4574 1.33 4080 4599 1.27 4130 4811 2.26 4380 5013 2.26 4380 5013 4.28 4820 5287 4.28 4820 5287 4.89 4820 5587	0.16 2590 2690 0.21 2760 2929 0.40 3110 3593 0.61 3490 3982 0.78 3620 4179 1.07 3980 4574 1.33 4080 4599 1.27 4130 4811 2.26 4380 5013 2.26 4380 5013 4.28 4820 5287 4.28 4820 5287 4.89 4820 5587	0.16 2590 2690 0.21 2760 2929 0.40 3110 3593 0.61 3490 3982 0.78 3620 4179 1.07 3980 4574 1.33 4080 4599 1.27 4130 4811 2.26 4380 5013 2.26 4380 5013 4.28 4820 5287 4.28 4820 5287 4.89 4820 5587	0.16 2590 2690 0.21 2760 2929 0.40 3110 3593 0.61 3490 3982 0.78 3620 4179 1.07 3980 4574 1.33 4080 4599 1.27 4130 4811 2.26 4380 5013 2.26 4380 5013 4.28 4820 5287 4.28 4820 5287 4.89 4820 5587	0.16 2590 2690 0.21 2760 2929 0.40 3110 3593 0.61 3490 3982 0.78 3620 4179 1.07 3980 4574 1.33 4080 4599 1.27 4130 4811 2.26 4380 5013 2.26 4380 5013 4.28 4820 5287 4.28 4820 5287 4.89 4820 5587	



ELF
WESTERN RICERCH GEOFISICHE
MILAN - ITALY

AREA ITALIA-ZONA 2
PROSPECT PASTUM

DATE: 02/87
PROF: 1-86-PA-12

RECORDING DATA: 1000 PCT, OBS-DMO-TVF

PROCESSING SEQUENCE:
1. DEMULTIPLYED FOR AMP. AND S. COR.
2. PREFILTER - RMS GAIN
3. PRE-PROCESSOR DESIGN
4. SURF. CONSISTENT RESTO. STATISTICS
5. CONSTANT VELOCITY STACK
6. RMS STATISTICS, MUTE APPL. GATEWAY
7. SURF. CONSISTENT RESTO. STATISTICS
8. TOP CONS. RESIDUAL STATISTICS
9. STA. DMO
10. TIME VARIANT FILTER
11. VERTICAL INTERPOLATION
12. RMS GAIN
13. LINE DIFFERENCE MIGRATION
14. PERCENT BULK

LEGEND:
VELOCITY ANALYSIS
INTERPOLATION

LINE LOCATION MAP

elf italiana s.p.a. D.E.P. - Italy: ITALIAIE - Permis: Pastum

DIR. EXPLORATION: 02/87
Date: 02/87
Auteur: E.I.
Des: Mastrogiro
N° Class: Cb8.0y24

PROF. 1-86-PA-12 (ESPLOSIVO)
SISMICA 1986

AII. 2