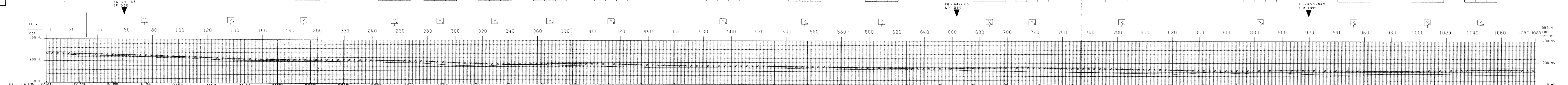




Data: APRILE 1986 Dis.n. 408A5 Fig.n. 3

CROOKED LINE
3000 PCT DBS-TVf

Table with 12 columns of data, each column representing a different station or profile. Each column contains numerical values for time, distance, and other parameters.



AGIP WESTERN RICERCHE GEOFISICHE MILAN - ITALY. AREA PUGLIA PERUSSO ORTANOVA. RECORDING DATA and PROCESSING SEQUENCE tables. Includes parameters like SENSORS, FILTERS, and VELOCITY ANALYSIS. A LINE LOCATION MAP is also present at the bottom.

