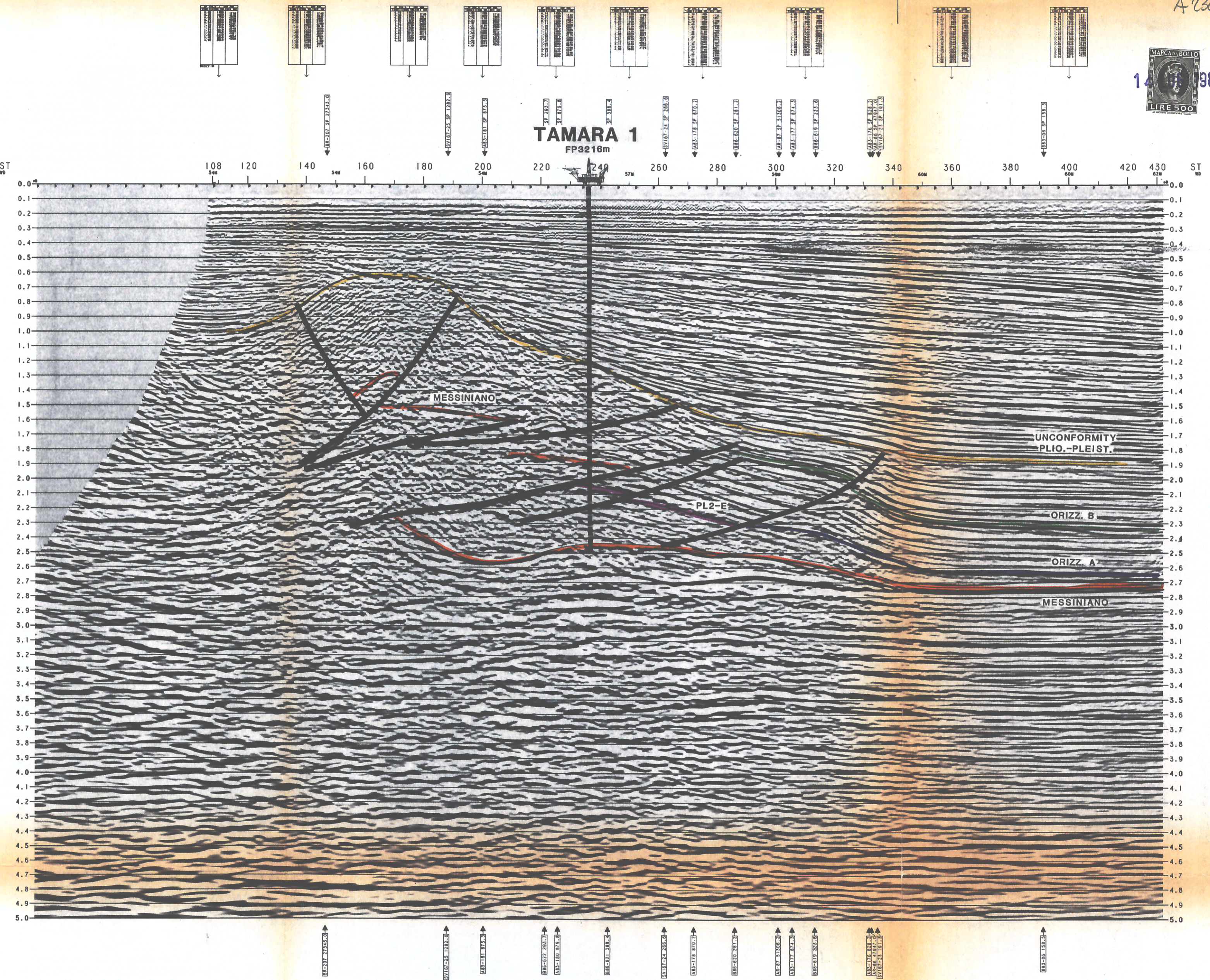


A 2364

LINE: B86-592
SP RANGE: 100-432
NORTH-EAST

DBAS DMO TR. INT. MIGR
PROCESSING 1987

Allegato 1	Data MAGGIO 1988	Dis.n. 2533/3
----------------------	----------------------------	-------------------------



S O R I

WESTERN RICERCHE GEOFISICHE
MILAN - ITALY

AREA BR-167-SV (ADRIATICO) DATE OF RECORDING MARCH, 1987
DATE OF PROCESSING APRIL, 1987

RECORDING DATA

BOAT	DEGITALIA I
SHOT BY	DEGITALIA I
VESSEL	STELIS
PRIMARY	SAT. MAP
SECOND.	
SOURCE	
HIGH PRESSURE AIR GUN	1270 CH-1
SOURCE DEPTH	5 M
NUMBER OF PUMPS PER KM	37.5
S.P. INTERVAL	28.07
INSTRUMENTS	
AMPLIFIER	LES-18A
REC. FILTERS HZ	LOW 12HZ-18 DB/OCT
REC. FILTERS HZ	HIGH 100HZ-150 DB/OCT
RECORD LENGTH	8 SECS
FORMAT	SEG-D
SAMPLE RATE	2 MS
CABLE	
GROUP INTERVAL	240
FROM SOURCE	118 M
ANTENNA FROM CENTER OF NEAR GROUP	215 M
FROM SOURCE	100 M
SOURCE TO CENTER OF NEAR GROUP	318 M
CENTER TO NEAR GROUP TO FAR GROUP	6-7 M
CABLE DEPTH	

PROCESSING SEQUENCE

SEC-D CONVERSION	PROCESSING SAMPLE RATE 4 MS
PROCESSING RECORD LENGTH 8000 MS	
INSTRUMENT PHASE COMPENSAT.	
INST. RESPONSE CONVERTED TO MIN. PHASE	
QUALITY CONTROL	
NEAR TRACE DISPLAY AND 100%	
ADJACENT TRACE SUM	
TRACES SUMMED FROM 240 TO 120	
PREPROCESSOR - DBS	
COMMON WIDENING FAMILY	
GEOMETRIC SPREADING GAIN APPLIED	
DECOMPOSITION MIN. PHASE INVERSE FILTER	
WINDOW LENGTH 232000	
LENGTH OF ACTIVE OPERATOR 500	
MINIMUM PREDICTIVE LAG 1.0	
TRACE BALANCE	
DIP MOVEOUT	
COMMON OFFSET SORT	
N.M.B. (PREPROCESS VELOCITIES)	
PARTIAL PRE-STACK MIGRATION 100%	
50% DIP LIMIT ON 80 TR	
PARTIAL STK FROM 0000 TO SKI2000	
COMMON OFFSET MIGRATION	
F/K STOLT ALGORITHM USING	
WATER VELOCITY (1450 M/SEC)	
INVERSE N.M.B.	
VELOCITY ANALYSIS	
MATRIX FUNCTION VELAN PLUS	
VELOCITY RANGE 1400-5000	
VELOCITY INCREMENT 100	
CONSTANT VELOCITY STK ON 8 CMP/ANALYSIS	
5 X 12 N.M.B. STACK	
DYNAMIC CORRECTION	
MUTE GEOMETRY (OFFSET/NOTE TIME)	
200/500 250/200 280/400	
1500/1000 3272/2500	
D.A.S.	
AUTOCORR. WINDOW LENGTH 2 X 2000	
OPERATOR LENGTH 200	
MIN. PREDICT. DISTANCE 40	
PERCENT WHITE LIMIT 0.1	
TRACE INTERPOLATION	
GROUP INTERVAL FROM 20.0 TO 15.5 MT	
MIGRATION	
FB RESIDUAL - 3 CASCADE MIGRATION	
VELOCITIES SMOOTHED OVER 1 CABLE LENGTH	
TIME VARIANT FILTER	
TIME	FREQUENCY
0.100	1000 1000 7000 7200
0.500	1000 1000 6000 7200
2.000	800 1000 5000 6000
4.000	800 1000 4000 6000
5.000	400 1000 3000 6000
FILTERS INTERPOLATED IN TIME AND SPACE	
GENERALIZED MEAN GAIN	

AREA MAP



HORIZONTAL	1:20,000	1:12,500
VERTICAL	0 CM / SEC	10 CM / SEC
	0.5	0.5
	KILOMETER	

LEGEND
WATER DEPTHS
VELOCITY FUNCTION
O.C. FOR W.R.C.

COMMENTS

BATHY PLANE IS SEA LEVEL.
A 10% AND CABLE DEPTH CORRECTION OF 12MS
HAS BEEN APPLIED IN THE PRE-PROCESSING.
COMPRESSION PULSES RECORDED AS NEGATIVE
NUMBERS ON TAPE AND PLOT AS TRIPPERS (WHITE).

LINE LOCATION MAP

