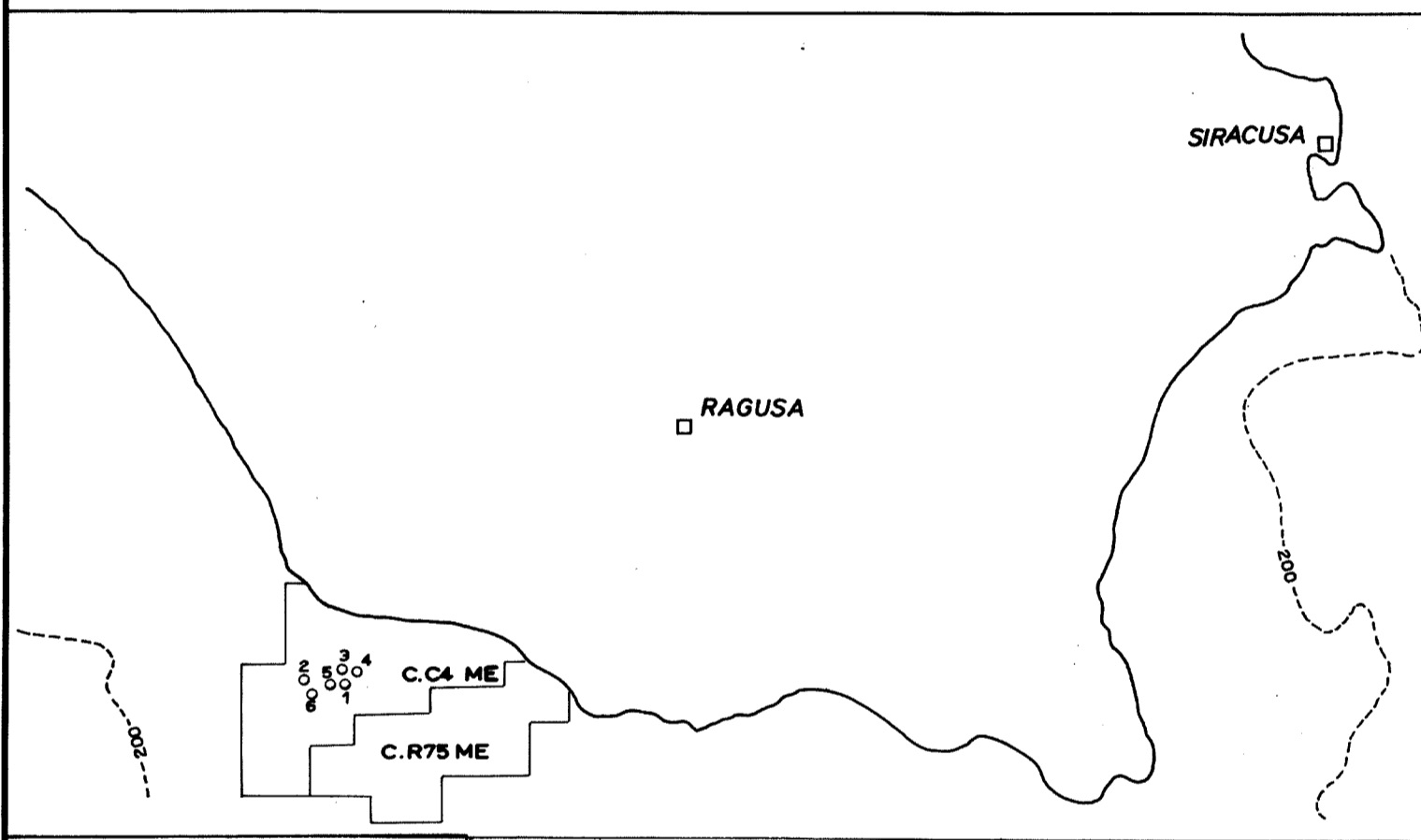


ALL.2
A 235

SEZIONE IDROCARBURI CONCESSIONE C.C4-ME
di NAPOLI
12 OTT. 1987
Prot. N. 6284
CAMPO DI MILA
Pozzo MILA 6s

COMPOSIT LOG E DATI SOMMARI DEL RESERVOIR

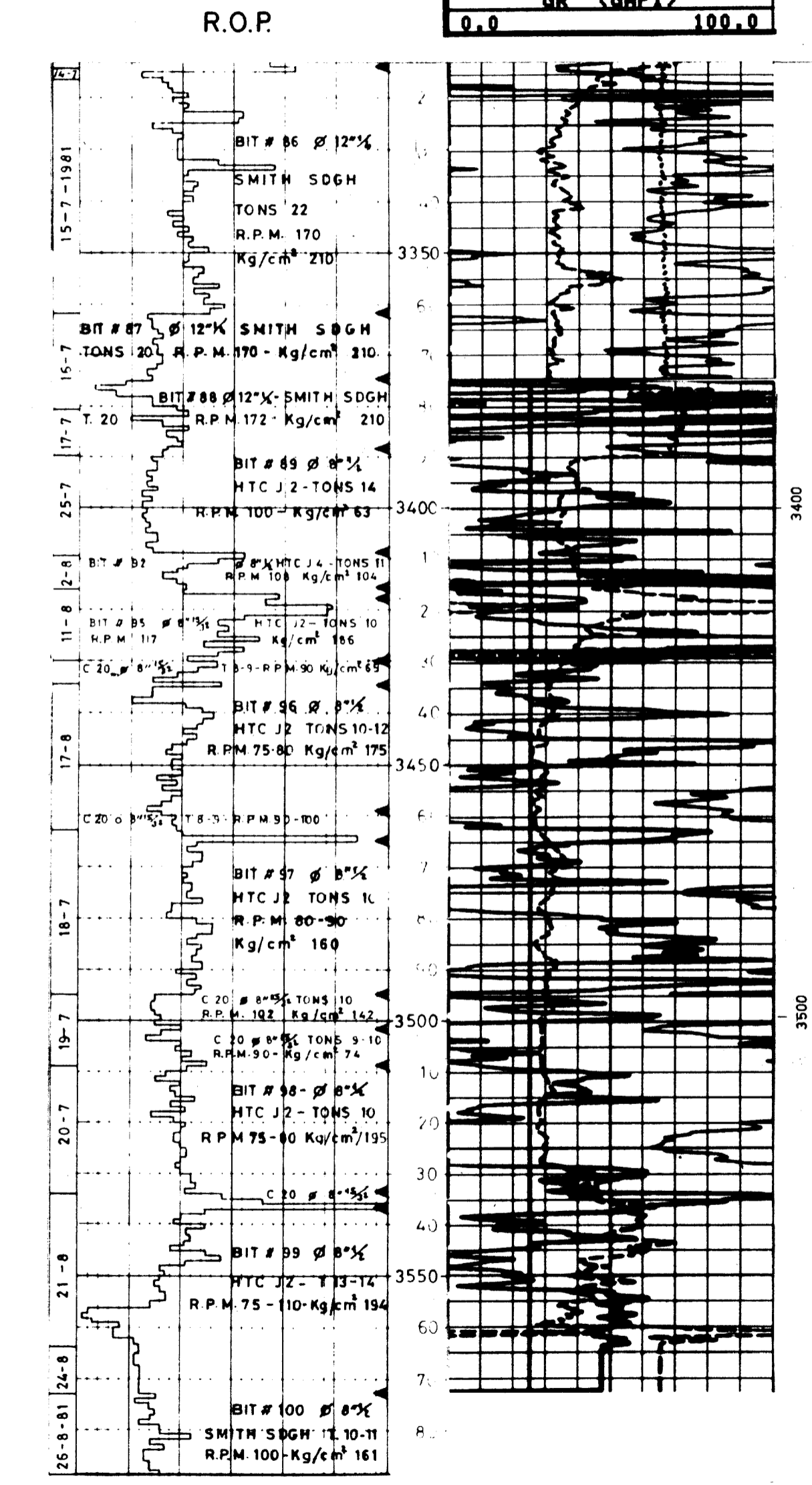


GRUPPO MONTEDISON
SELM
Societa' Energia Montedison
SETTORE IDROCARBURI
SERVIZIO GIACIMENTI
Scala: 1:1000
Data: SETT. 1983
Autore: Dr. GUIDI
Disegnato: CAPELLINI
N° Dis.:

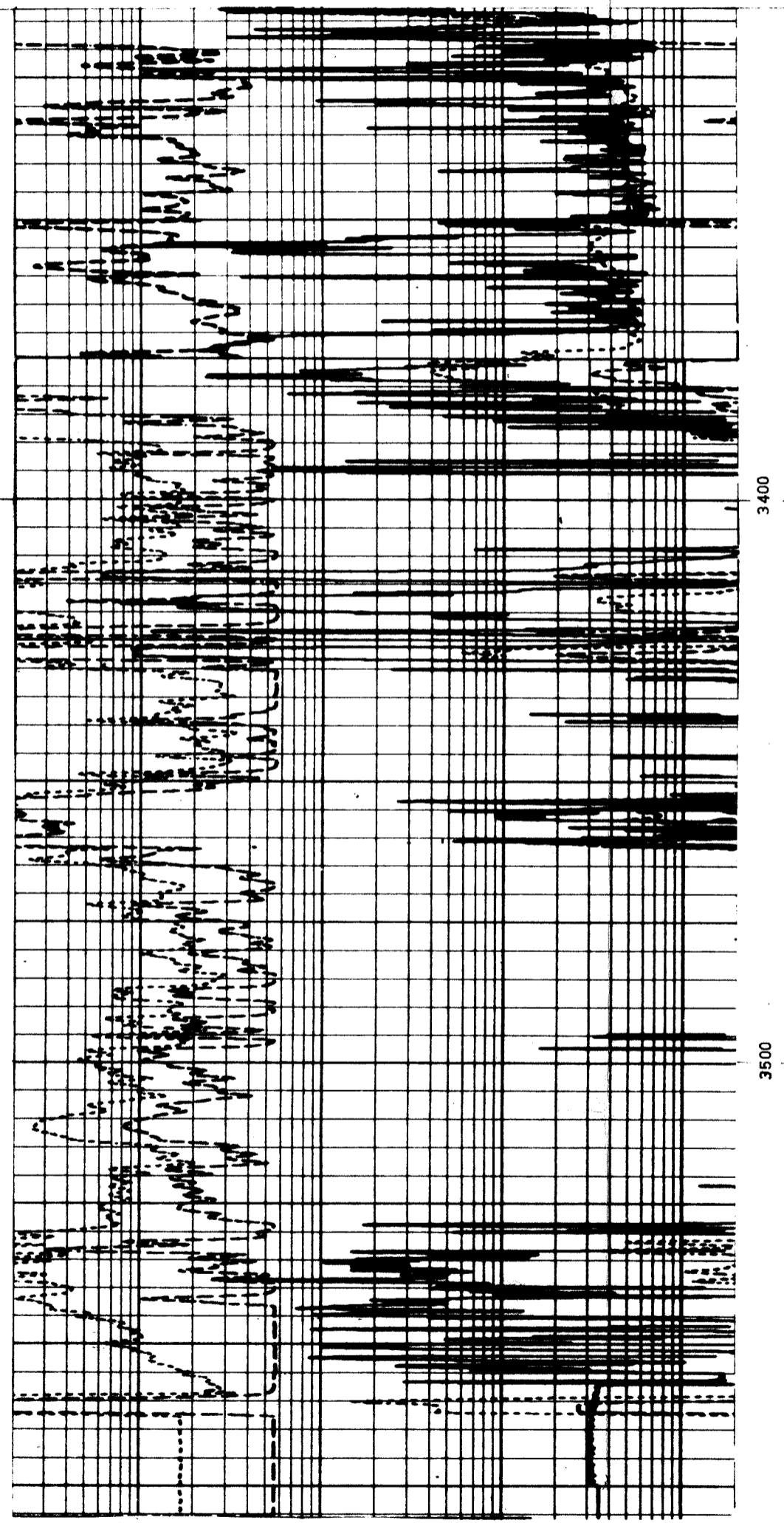
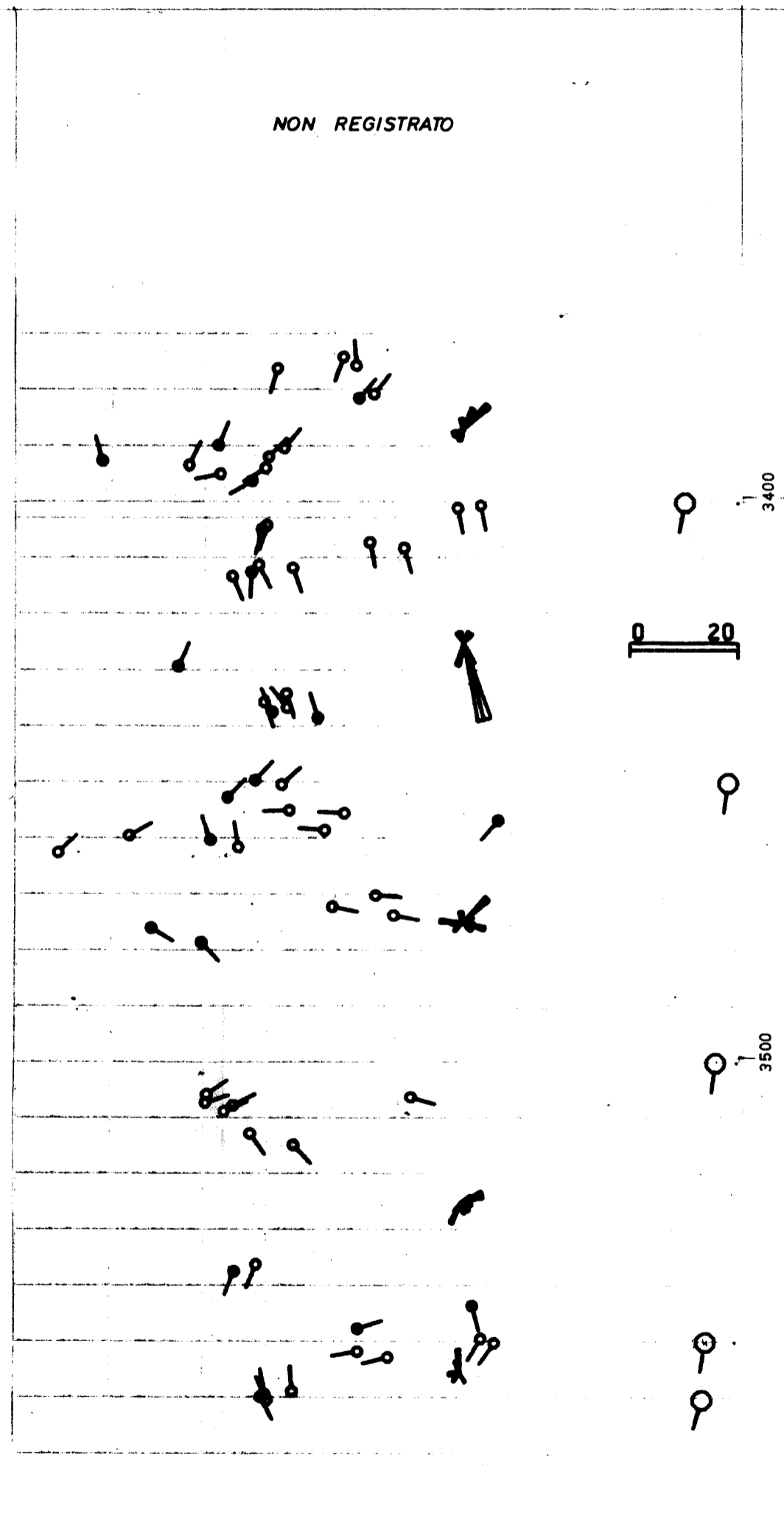
0.0	TENS. (L.P.)	5000.
10.00	CALICIN	20.00
0.0	GR (GAPI)	100.0
6.000	BS (IN)	16.00
6.000	CALICIN	16.00
0.0	GR (GAPI)	100.0

2000.	LLS. (QHMM)	20000
2000.	LLD (QHMM)	20000
0.2000	MSFL (QHMM)	2000.
0.2000	LLS. (QHMM)	2000.
0.2000	LLD (QHMM)	2000.

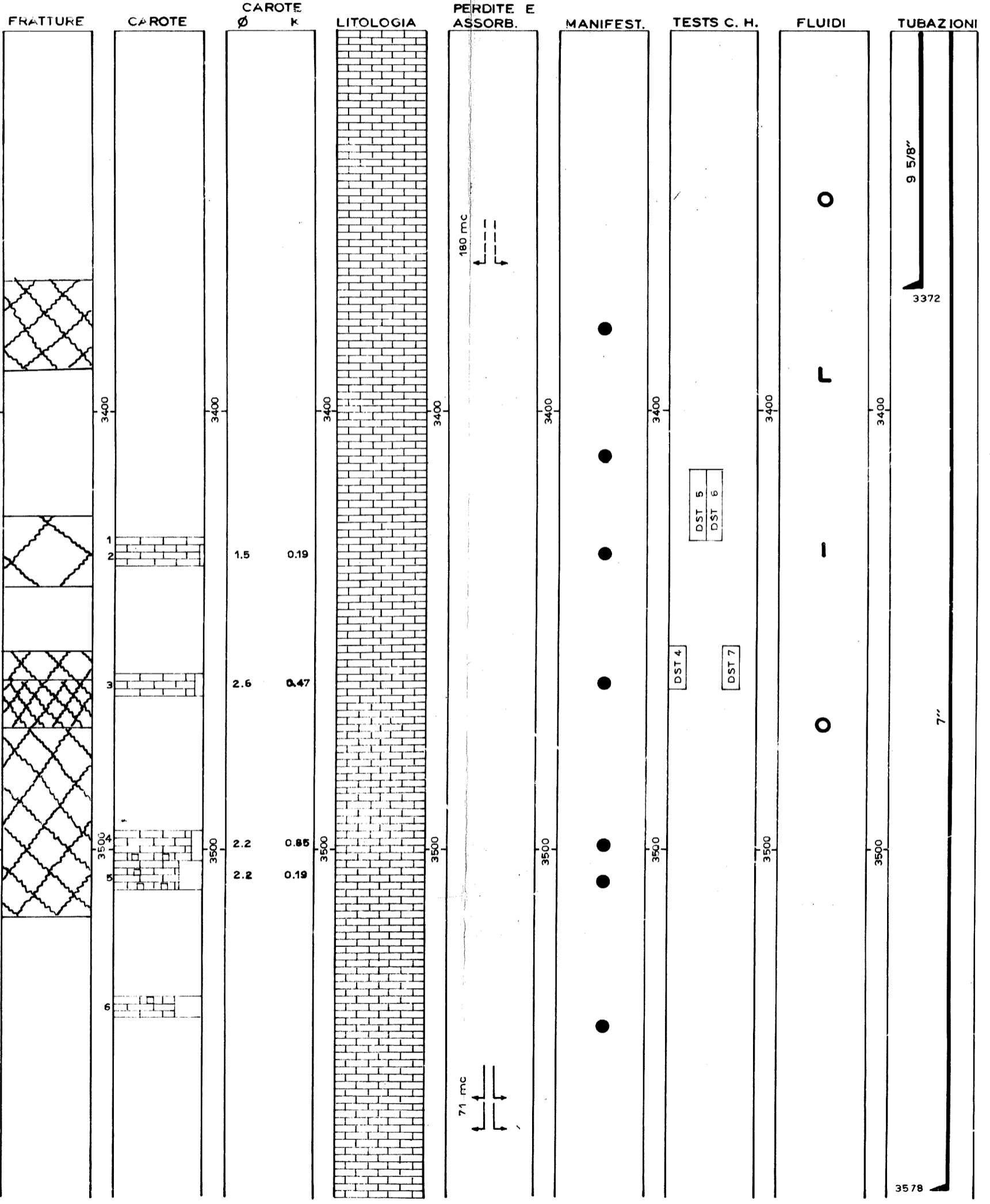
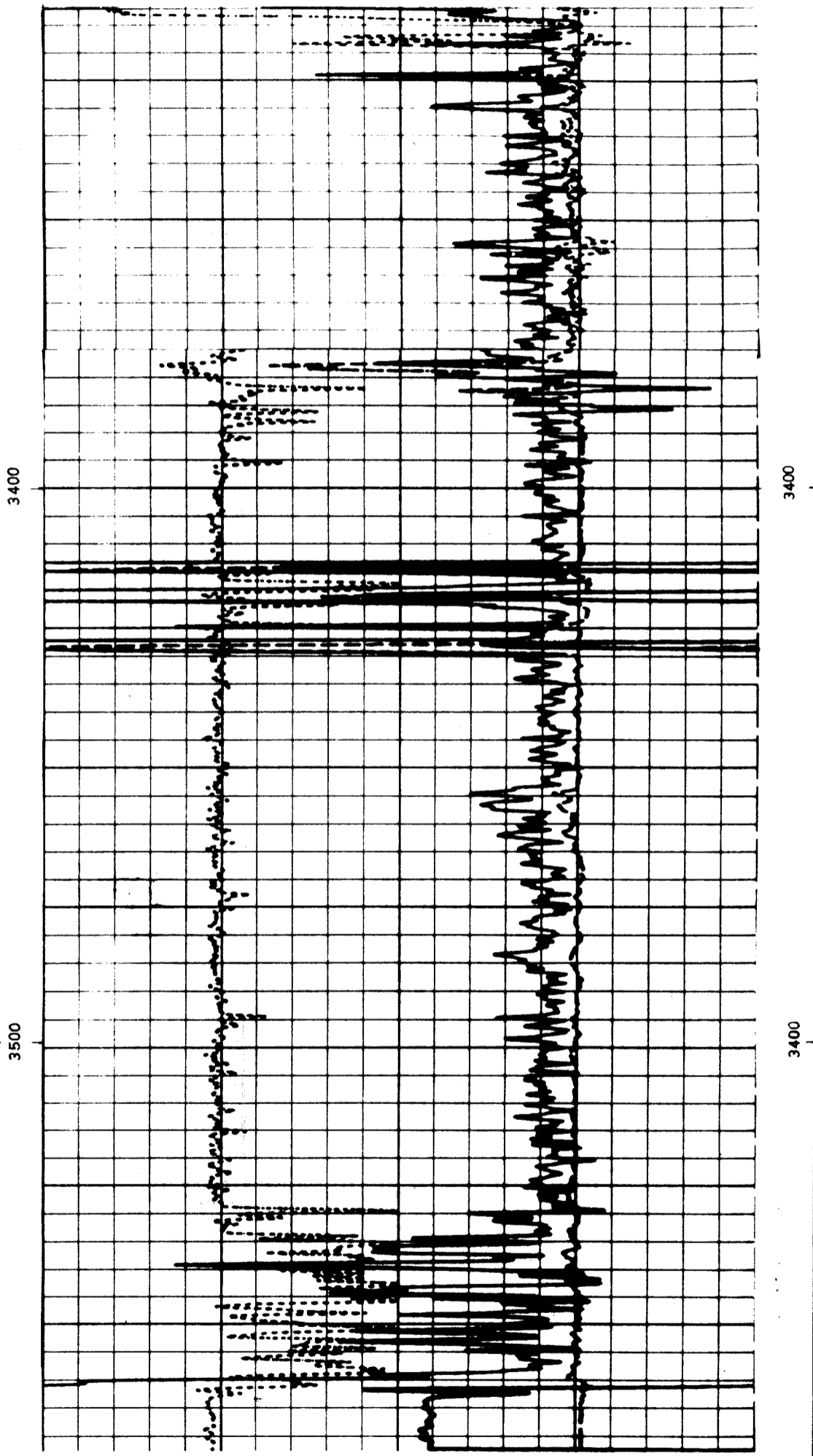
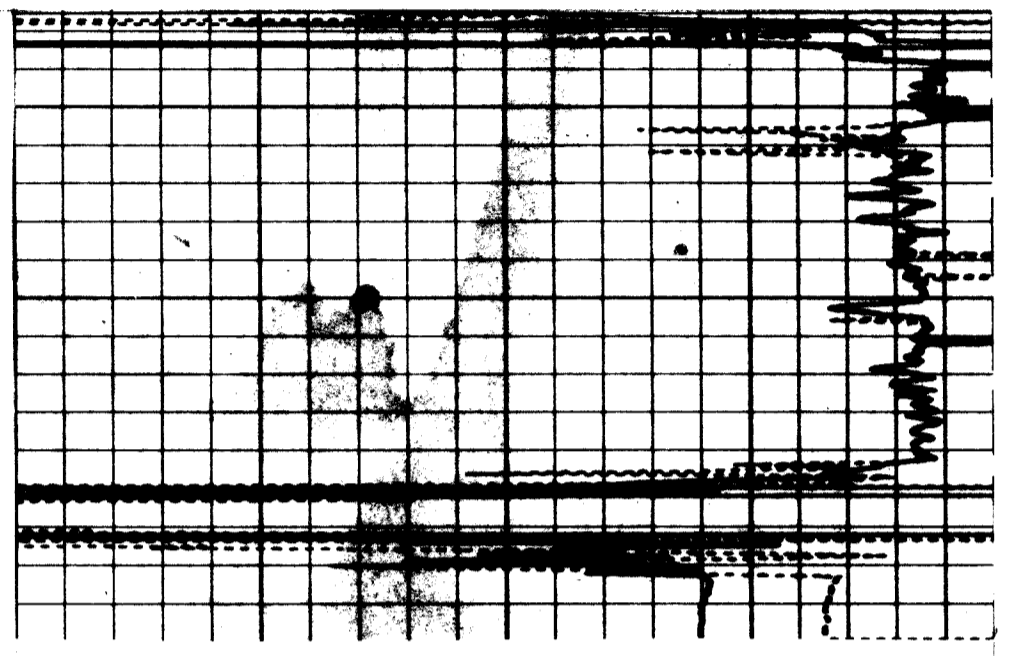
0.4500	NPHIS	-0.250	DRHO (G/C3)	0.2500
1.950	RHO (G/C3)	-0.150		2.950
0.4500	NPHIS	-0.250	DRHO (G/C3)	0.2500
1.950	RHO (G/C3)	-0.150		2.950



DIP ANGLE AND DIRECTION
BOREHOLE DRIFT



140.0	RTL (US/F)	40.00
140.0	DT (US/F)	40.00



Pozzo MILA 6s

RISULTATI DELLE PROVE		
TEST	INTERVALLO	RECUPERO
4	3454 - 3463	PRODOTTI 2377 STBO (q max 3100 STBOPD)
5	3414 - 3430	ACIDIF. NON RIUSCITA
6	3414 - 3430	ACIDIF. NON RIUSCITA
7PT	3454 - 3463	PRODOTTI 8751 STBO (q max 5050 STBOPD)
7PT	3454 - 3463	PRODOTTI 63010 STBO (q max 4300 STBOPD GOR 1230)

DATI GENERALI

Concessione C.C4 ME
Impianto NATIONAL 1625 DRILL SHIP GLOMAR GRAND BANKS
Coordinate Long 14° 29' 23"544
Lat. 36° 44' 09"427
Fondo marino -m67
T.R. 9.6m
Inizio perforazione 17-3-1981
Fine perforazione 26-8-1981
Impiante rilasciato 5-10-1981
Profondità finale perf. 3589 m.