

MONTESILVANO

S 288 LINE MS 10 129 N

COP fold 24
DISPLAY 2400% STACK
VELOCITY of HOMOGENEITY : 5000 m/s
SCALE : 1/25 000
DATUM PLANE AT : 0 m

PROCESSING

AMPLITUDE RECOVERY
EDITING
STATIC CORRECTIONS (FROM GROUND LEVEL TO DPC)
DECONVOLUTION
GATES
VELOCITY ANALYSIS (ANVIT)
NMO CORRECTIONS (LINEAR INTERPOLATION BETWEEN VELOCITY FUNCTIONS)
AUTOMATIC STATIC ADJUSTMENT
STACK 2400% FOLD

COMPAGNIE GENERALE DE GEOPHYSIQUE
DATE MAY 31 77
CHECKED:

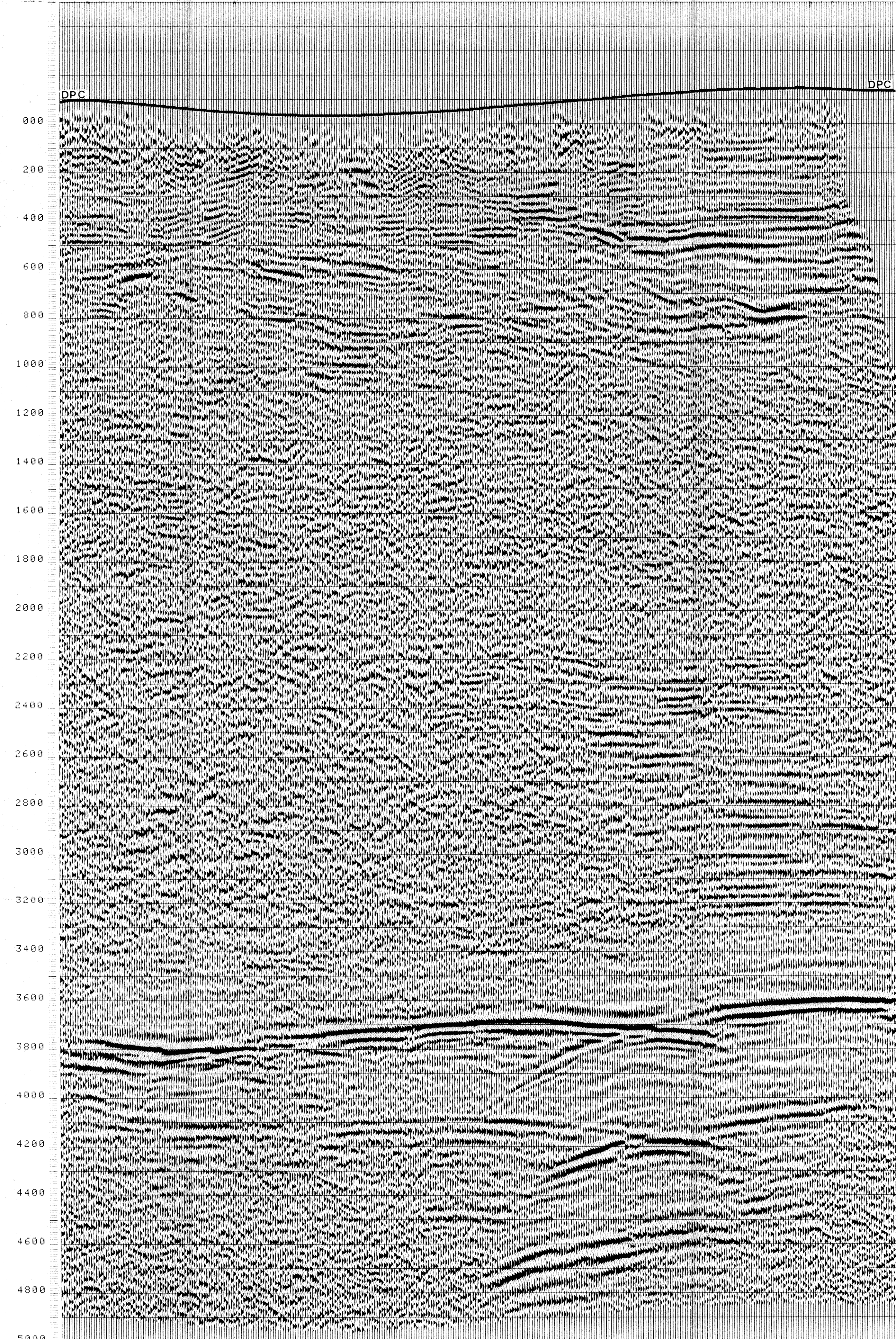
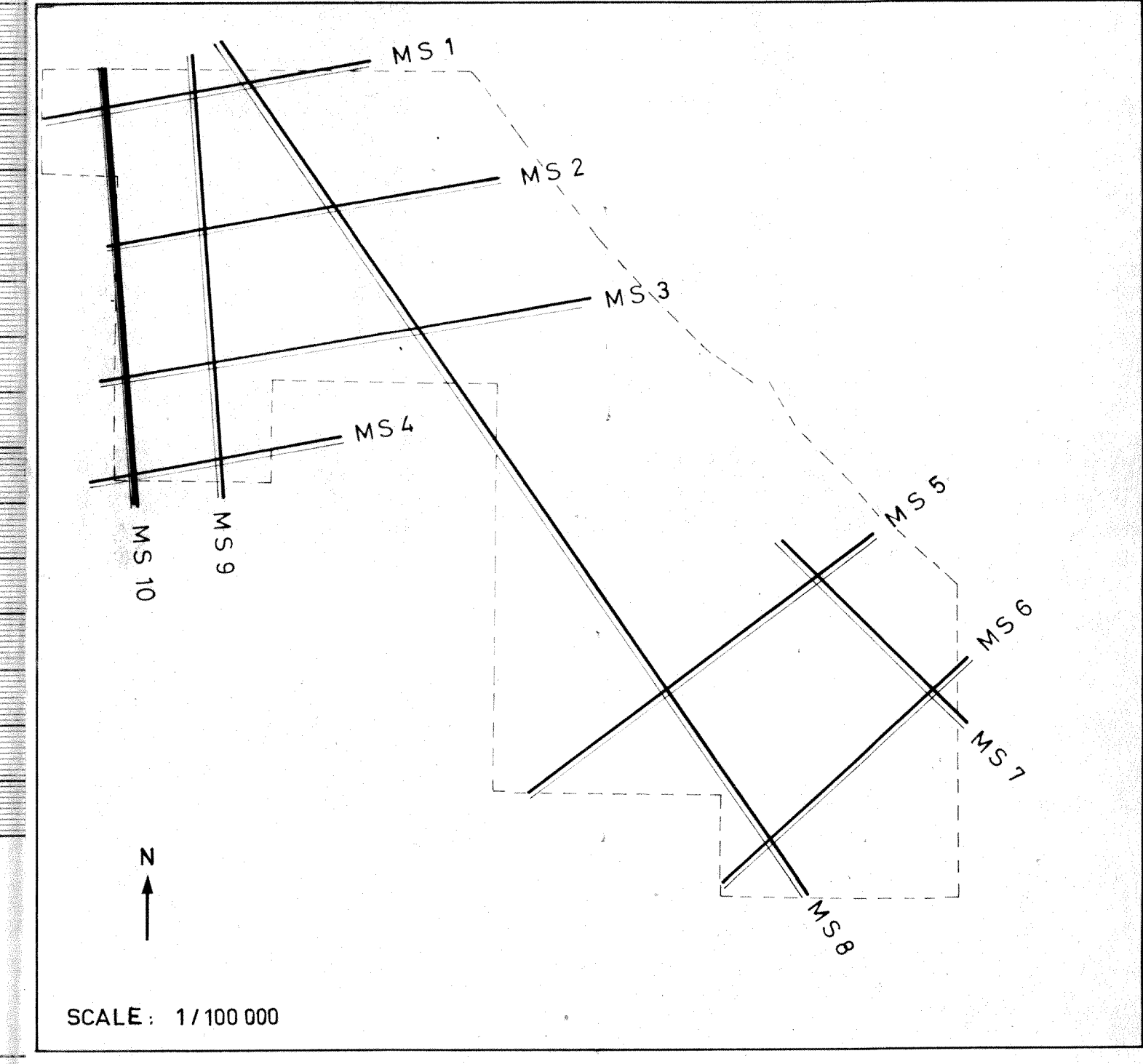
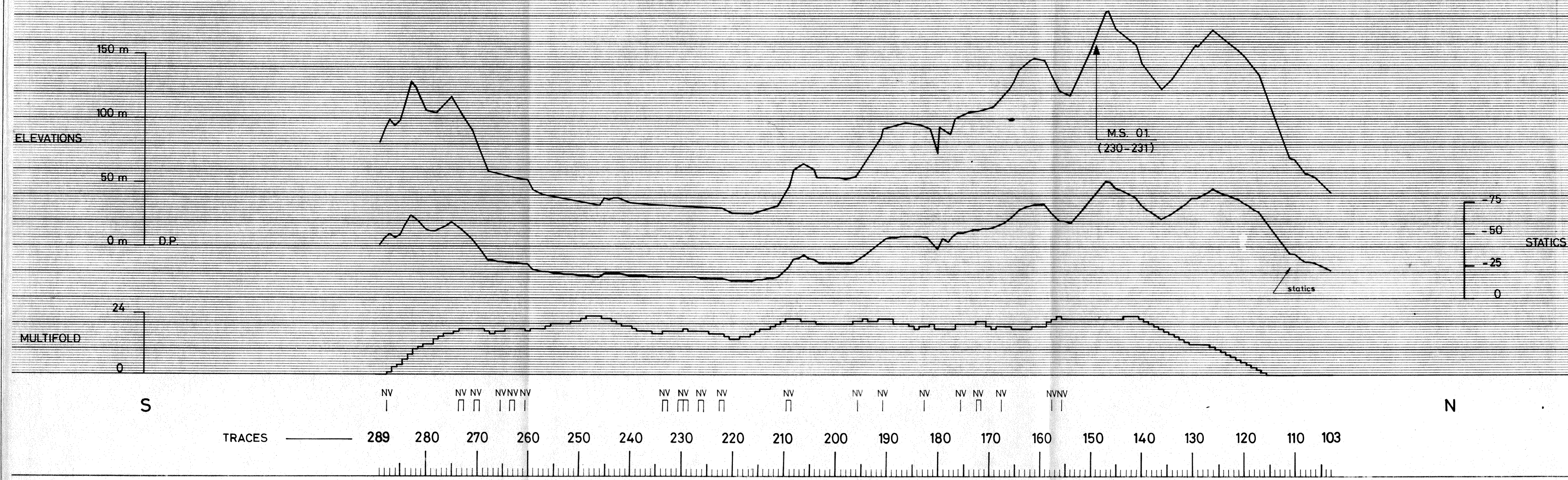
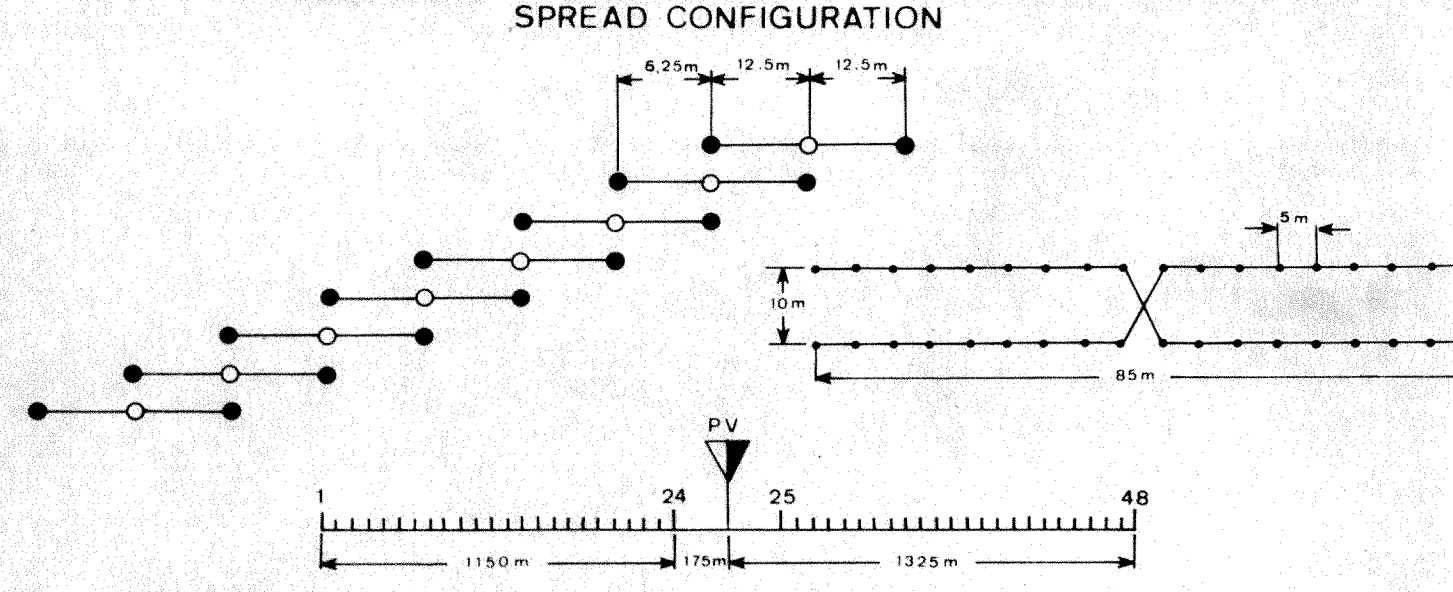


Table with columns for SP, FROM, TO, and VARIABLE FILTER, listing numerical values for each parameter across the depth of the seismic data.

I RECORDING TECHNIQUE: VIBROSEISMIC

Table for LAND SURVEY with columns for SHOT POINT and SURVEY details.

2 SPREAD
Vibration station (VS)
Geophone spread
Nb of vibrations, Distance between VS, Lateral offset, Sweep frequency, Sweep length



II RECORDING PARAMETERS

RECORDING EQUIPEMENT SN 338 A
GEOPHONES type SENSOR SMU 4U
frequency 10 Hz
AMPLIFIERS
Binary gain, Floating point
Filters
LF: 10 Hz, HF: 62.5 Hz, Notch filter: ON
Length of record: 9 + 6 = 15 s
Sampling: 4 ms

III SURFACE CORRECTIONS

1. METHOD Altimetry
2. VELOCITIES Vc = 2000 m/s

COMMENTS

Recorded: APRIL 14 77