

127.35.07

CPI SpA

### MONTESILVANO

SW 106 LINE MS 06 223 NE

CDP fold 24  
 DISPLAY 2400\*STACK  
 VELOCITY OF HOMOGENEITY : 5000 m/s  
 SCALE : 1/25 000  
 DATUM PLANE AT : 0 m

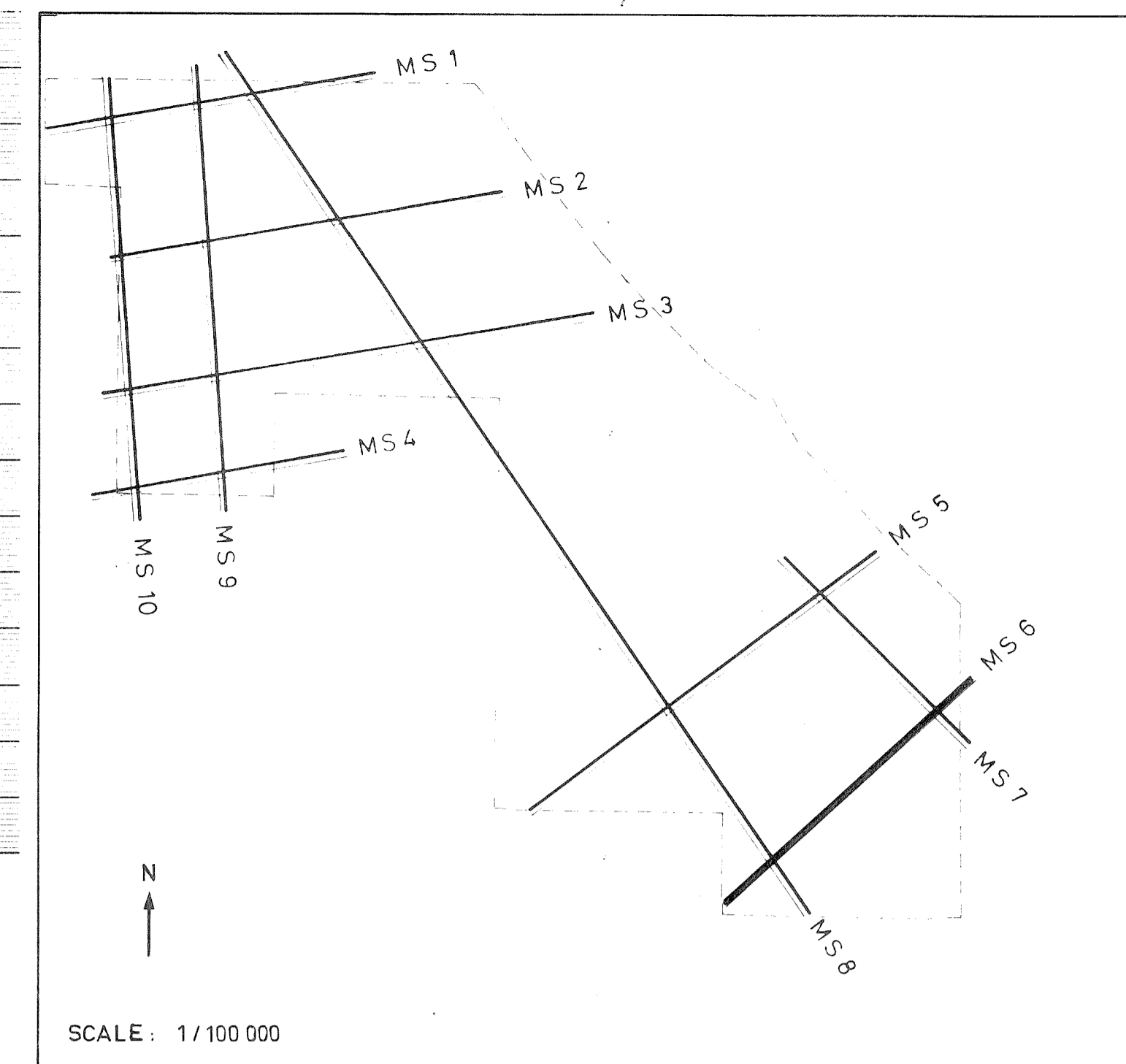
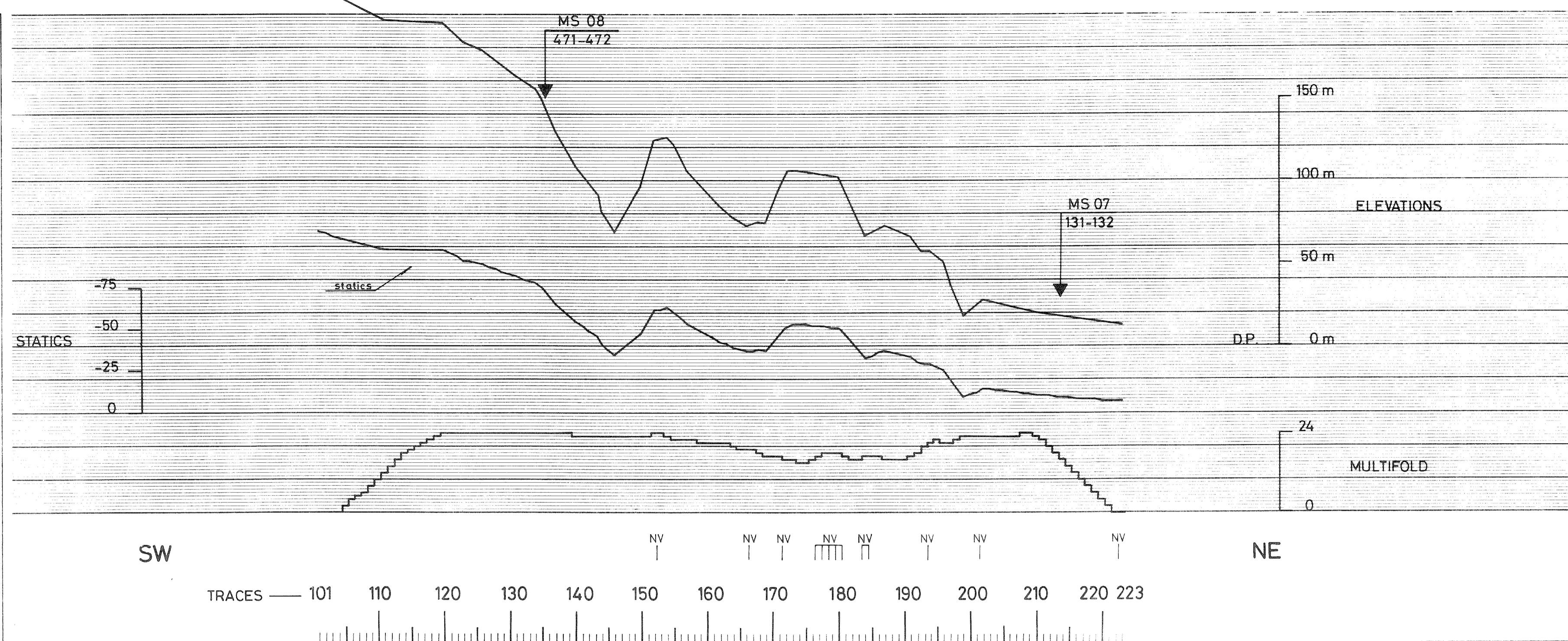
PROCESSING	
AMPLITUDE RECOVERY	TIME VARIAN. FILTER*
EDITING	
STATIC CORRECTIONS (FROM GROUND LEVEL)	TRAPEZOIDALIZATION
TO DPC	STATIC CORRECTIONS (FROM DPC TO DPC)
DECONVOLUTION 120 MS	ANALOG DISPLAY
FILTER * 800 NS - 1500 NS	
1800 NS - 2000 NS	
3000 NS - 4700 NS	
FURTHER ANALYSIS	
LINE CORRECTIONS* LINEAR INTERPOLATION	
FURTHER NEON LOG. REM. (100%)	
AUTOMATIC STATIC ADJUSTMENT	
SCALE 20000000	
*LENGTH OF ADJUST. TIME IS AT THE DATUM PLANE OF COMPUTATION (D.P.) (AVERAGE GROUND LEVEL)	



DATE JUNE 27 77

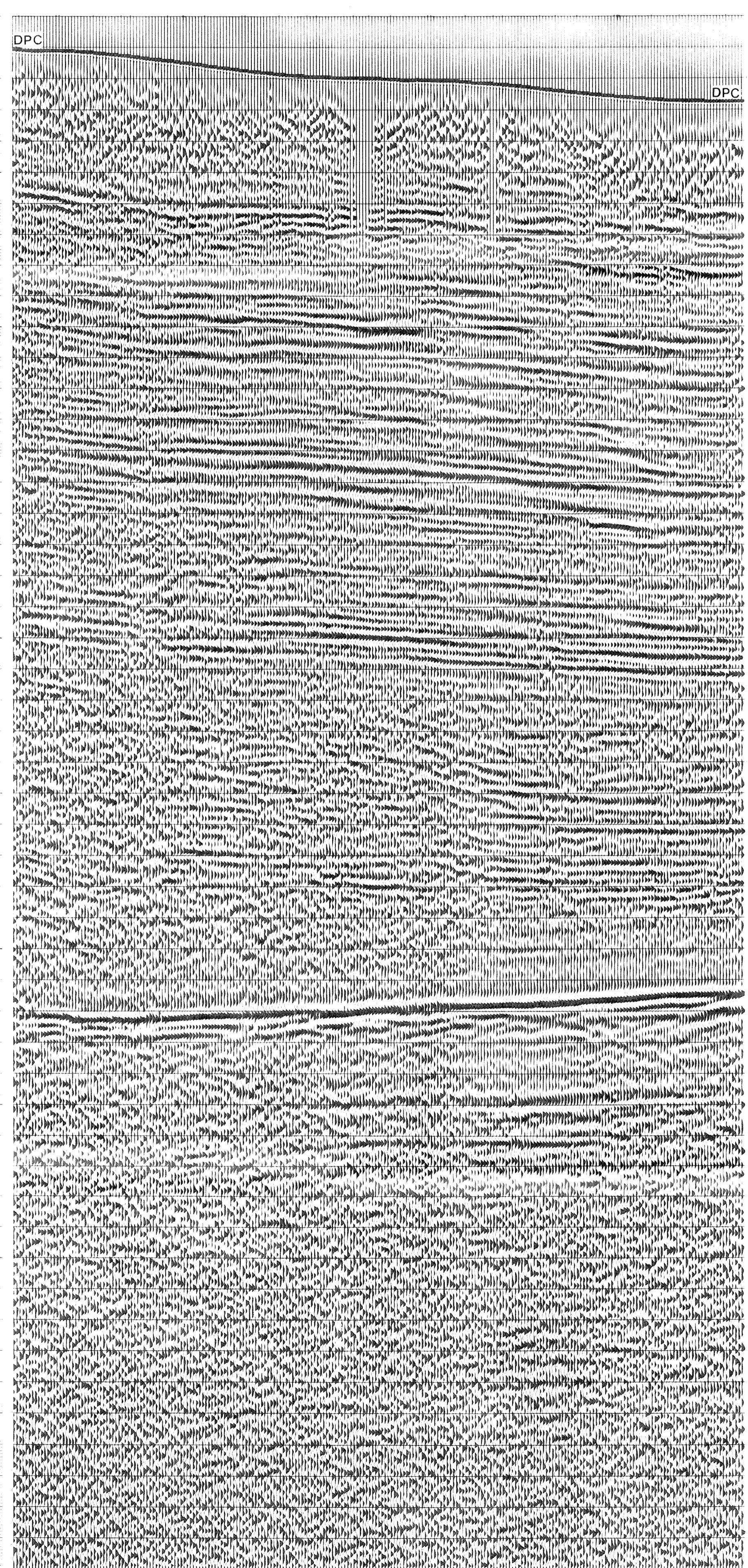
CHECKED

LINE MS 06



SW NE

TRACES 101 110 120 130 140 150 160 170 180 190 200 210 220 223



DEPTH (m)	TRACE 101	TRACE 110	TRACE 120	TRACE 130	TRACE 140	TRACE 150	TRACE 160	TRACE 170	TRACE 180	TRACE 190	TRACE 200	TRACE 210	TRACE 220	TRACE 223
000	*	*	*	*	*	*	*	*	*	*	*	*	*	*
200	*	*	*	*	*	*	*	*	*	*	*	*	*	*
400	*	*	*	*	*	*	*	*	*	*	*	*	*	*
600	*	*	*	*	*	*	*	*	*	*	*	*	*	*
800	*	*	*	*	*	*	*	*	*	*	*	*	*	*
1000	*	*	*	*	*	*	*	*	*	*	*	*	*	*
1200	*	*	*	*	*	*	*	*	*	*	*	*	*	*
1400	*	*	*	*	*	*	*	*	*	*	*	*	*	*
1600	*	*	*	*	*	*	*	*	*	*	*	*	*	*
1800	*	*	*	*	*	*	*	*	*	*	*	*	*	*
2000	*	*	*	*	*	*	*	*	*	*	*	*	*	*
2200	*	*	*	*	*	*	*	*	*	*	*	*	*	*
2400	*	*	*	*	*	*	*	*	*	*	*	*	*	*
2600	*	*	*	*	*	*	*	*	*	*	*	*	*	*
2800	*	*	*	*	*	*	*	*	*	*	*	*	*	*
3000	*	*	*	*	*	*	*	*	*	*	*	*	*	*
3200	*	*	*	*	*	*	*	*	*	*	*	*	*	*
3400	*	*	*	*	*	*	*	*	*	*	*	*	*	*
3600	*	*	*	*	*	*	*	*	*	*	*	*	*	*
3800	*	*	*	*	*	*	*	*	*	*	*	*	*	*
4000	*	*	*	*	*	*	*	*	*	*	*	*	*	*
4200	*	*	*	*	*	*	*	*	*	*	*	*	*	*
4400	*	*	*	*	*	*	*	*	*	*	*	*	*	*
4600	*	*	*	*	*	*	*	*	*	*	*	*	*	*

#### I RECORDING TECHNIQUE: VIBROSEISMIC

1. LAND SURVEY	SHOT POINT	
2. SPREAD		

**Vibration station (VS)**  
 No. of vibrations: 3  
 No. of sweep vibrations: 8  
 Distance between VS: 12.5 m  
 Lateral offset: 0 to 200 m  
 Sweep frequency: 12 - 48 Hz  
 Sweep length: 9 s

**Geophone spread**  
 No. of traces: 48  
 No. of geophones/trace: 36  
 Traces spacing: 50 m  
 Inner trace VS distance: 1.75 m

**SPREAD CONFIGURATION**

#### II RECORDING PARAMETERS

RECORDING EQUIPMENT: SN 338 A + TIGRE III  
 GEOPHONES: type SENSOR SMU 4U frequency 10 Hz

AMPLIFIERS	FILTERS
Binary gain	LF: 10 Hz
Floating point	HF: 62.5 Hz
	Notch filter: ON

Length of record: 9 + 6 = 15 s  
 Sampling: 4 ms

#### III SURFACE CORRECTIONS

1. METHOD: Allometry  
 2. VELOCITIES: Vc: 2000 m/s

COMMENTS

Recorded: APRIL 9 77