

MONTESILVANO

SW 268 LINE MS 05 101 NE

CDP fold 24
 DISPLAY 2400\STACK
 VELOCITY of HOMOGENEITY 5000 m/s
 SCALE 1/25 000
 DATUM PLANE AT 0 m

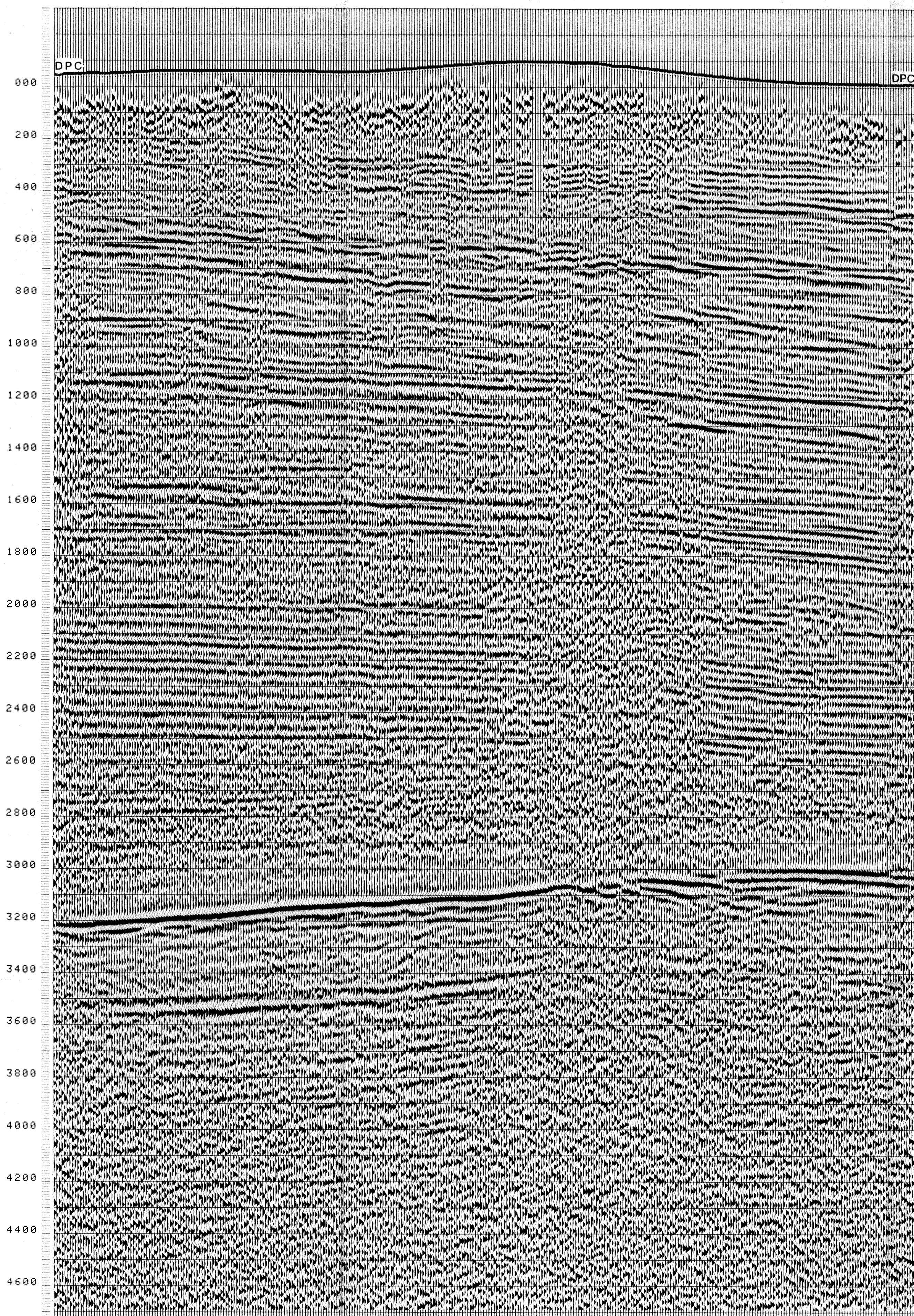
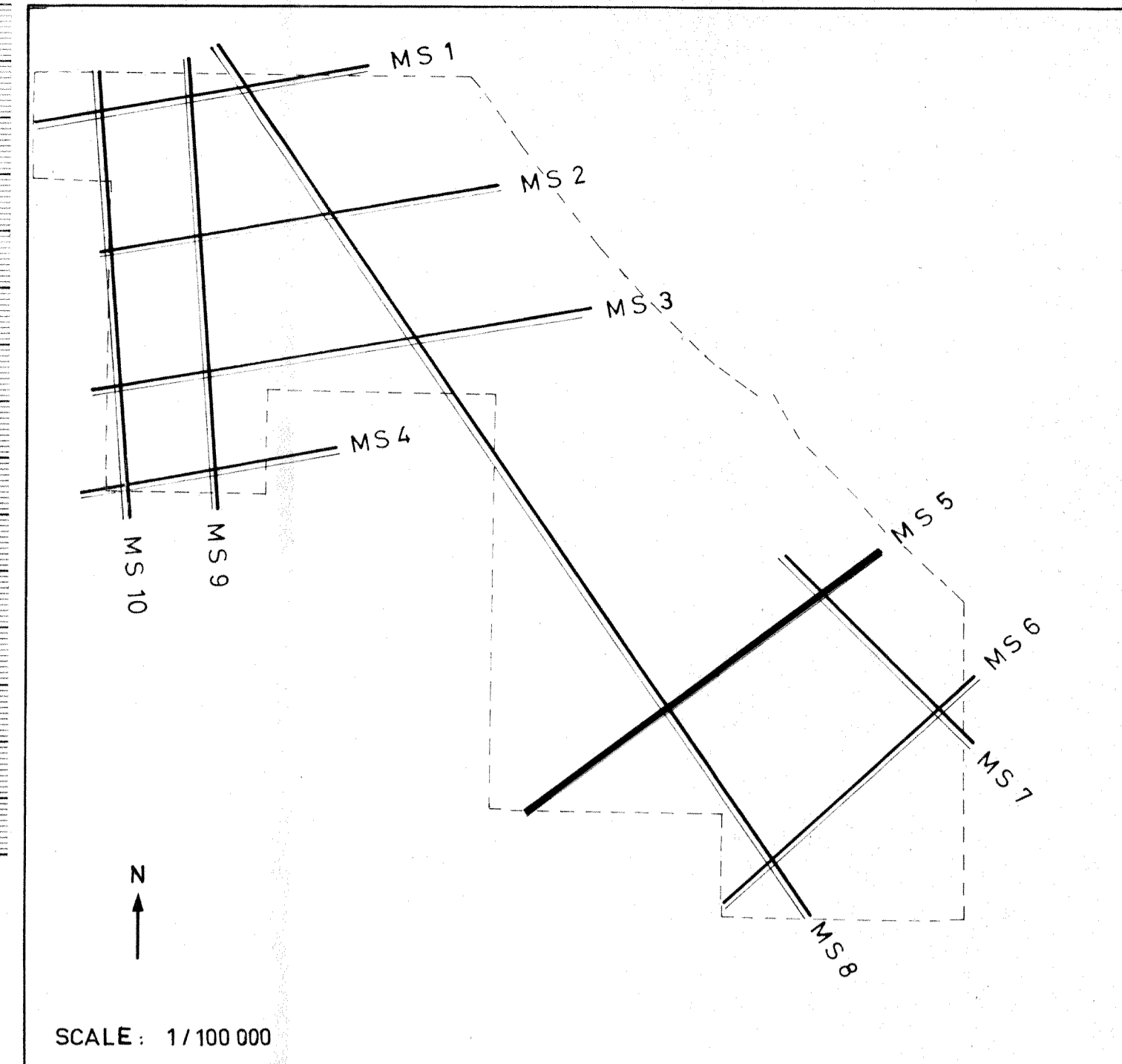
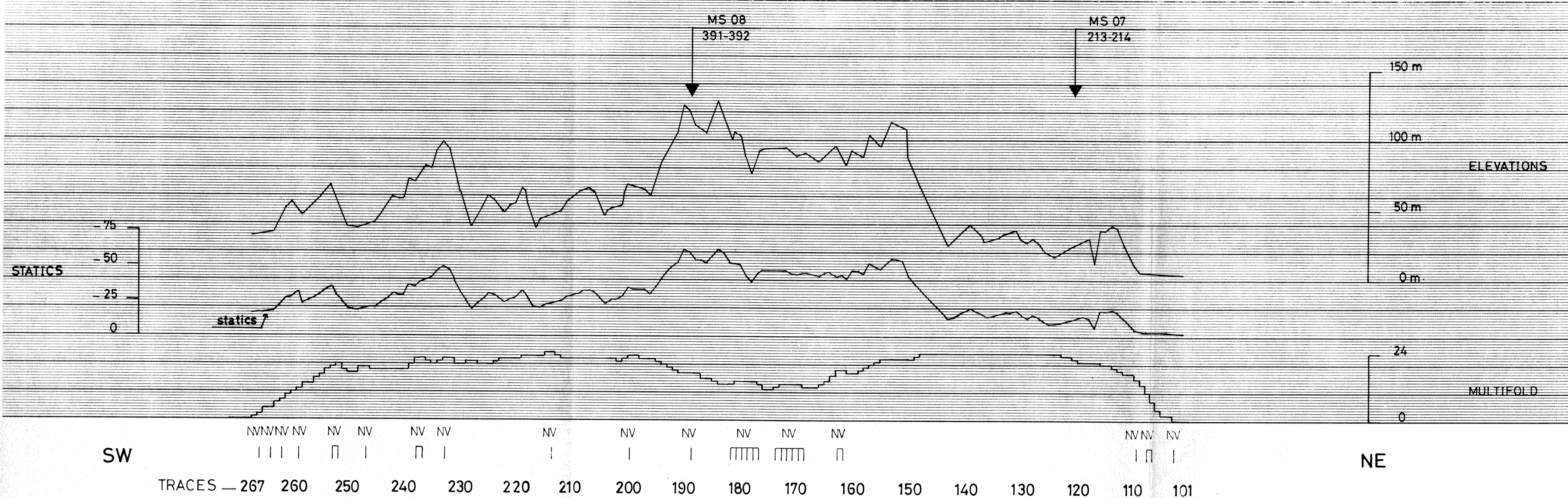
PROCESSING	
AMPLITUDE RECOVERY	TIME VARIANT FILTER*
EDITING	TRACE EQUALIZATION
STATIC CORRECTIONS (FROM GROUND LEVEL TO DPC)	STATIC CORRECTIONS (FROM DPC TO DP)
DECONVOLUTION 120 MS	ANALOG DISPLAY
GATES * 600 MS - 1500 MS	
1800 MS - 2100 MS	
3300 MS - 4700 MS	
VELOCITY ANALYSIS	
NMO CORRECTIONS* (LINEAR INTERPOLATION BETWEEN VELOCITY FUNCTIONS)	
AUTOMATIC STATIC ADJUSTMENT	
STACK 24000' FOLD	

ORIGIN OF ABOVE TIMES IS AT THE DATUM PLANE OF COMPUTATION (DPC : AVERAGE GROUND LEVEL)



DATE JUNE 28 77

CHECKED



FROM SP*	FROM SP*	FROM SP*	FROM SP*	VARIABLE FILTER
237*	189*	101*		
TO SP*	TO SP*	TO SP*	TO SP*	
26*	199*	101*		

*2 WAY-T	*AV. VEL.	*AV. VEL.	*AV. VEL.	
IN MS	IN M/S*	IN M/S*	IN M/S*	Frequency in Hz

200	1966	1969	1964	
400	1999	2074	1996	
600	2199	2249	2062	
800	2274	2412	2124	
1000	2319	2532	2139	
1200	2349	2581	2399	
1400	2435	2721	2497	
1600	2499	2918	2569	
1800	2638	3205	2652	
2000	2750	3376	2771	
2200	2883	3462	2896	
2400	2994	3529	2999	
2600	3088	3582	3099	
2800	3169	3626	3232	
3000	3238	3665	3347	
3200	3299	3699	3449	
3400	3399	3776	3541	
3600	3488	3844	3622	
3800	3568	3905	3694	
4000	3639	3959	3759	
4200	3704	4009	3819	
4400	3763	4054	3872	
4600	3817	4095	3921	

I RECORDING TECHNIQUE: VIBROSEISMIC

1. LAND SURVEY

SHOT POINT

2. SPREAD

Vibration station (VS) Geophone spread

Nb of vibrators: 3 Nb of vibrations/sweep location: 1 Nb of traces: 48

Nb of sweep locations (SL): 8 Distance between SL: 6,25 m Nb of geophones/trace: 36

Distance between vibrators: 12,5 m Distance between VS: 50 m Traces spacing: 50 m

Lateral offset: 0 to 200 m Longitudinal offset: 0 m Inner trace VS distance: 175 m

Sweep frequency: 12 - 48 Hz Sweep length: 9 s

SPREAD CONFIGURATION

II RECORDING PARAMETERS

RECORDING EQUIPMENT: SN 338 A GEOPHONES: type SENSOR SMU 4U

+ TIGRE III frequency: 10 Hz

AMPLIFIERS	FILTERS
Binary gain	LF: 10 Hz
Floating point	HF: 62.5 Hz
	Notch filter: ON

Length of record: 9 + 6 = 15 s Sampling: 4 ms

III SURFACE CORRECTIONS

1. METHOD: Altimetry

2. VELOCITIES: $V_c = 2000$ m/s

COMMENTS

Recorded: APRIL 13 77