

127.35-07

CPI SpA

MONTESILVANO

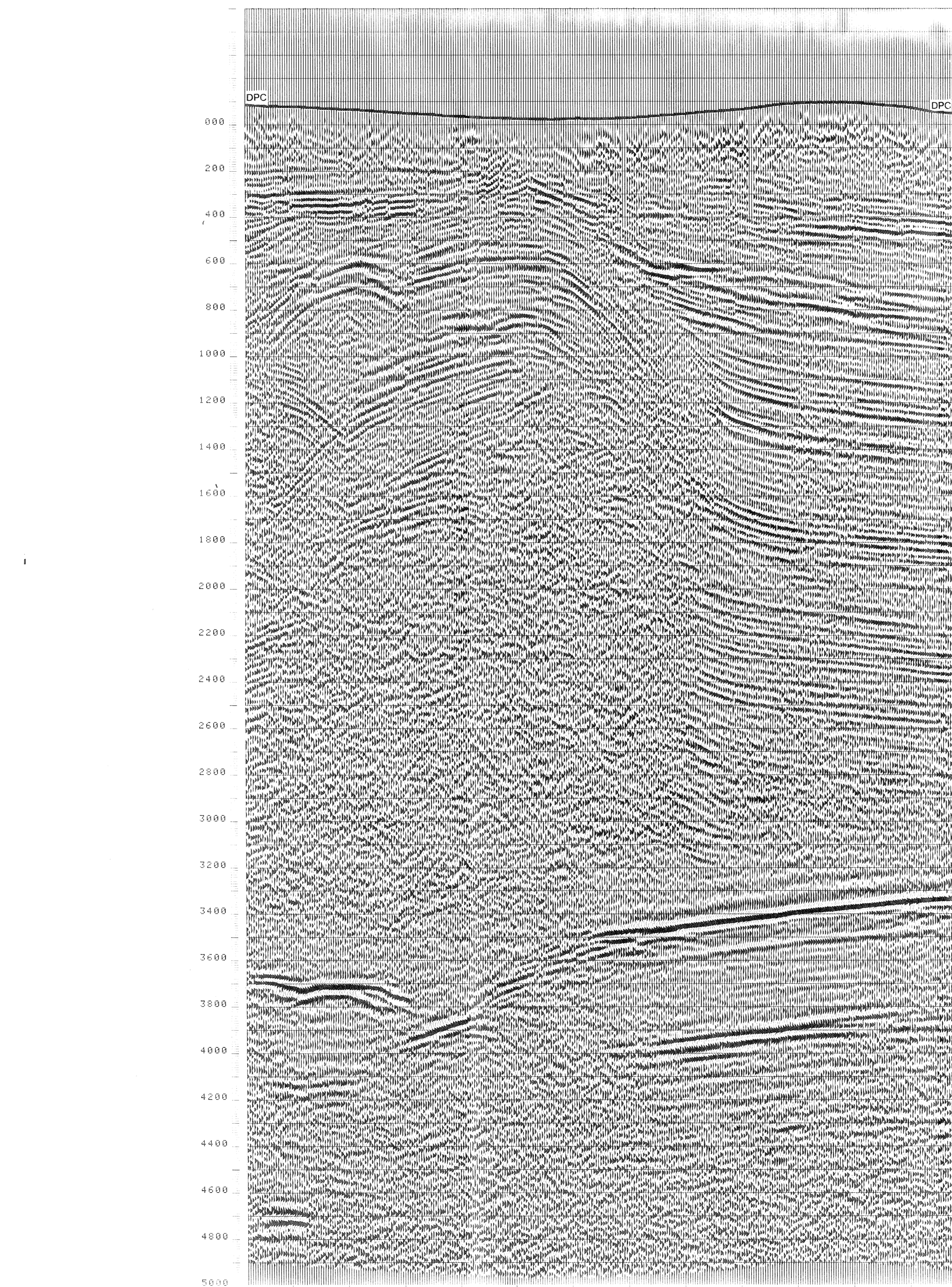
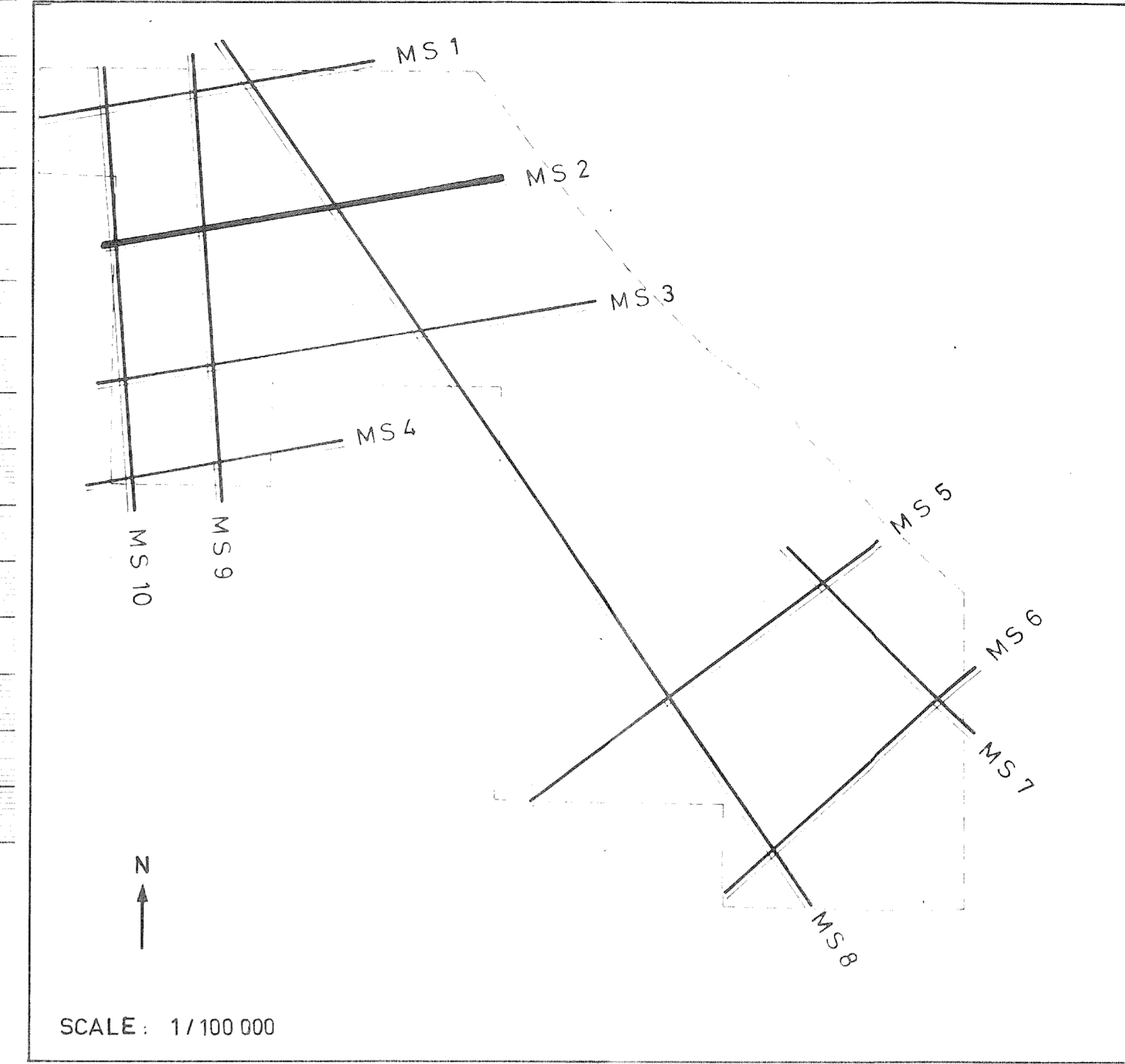
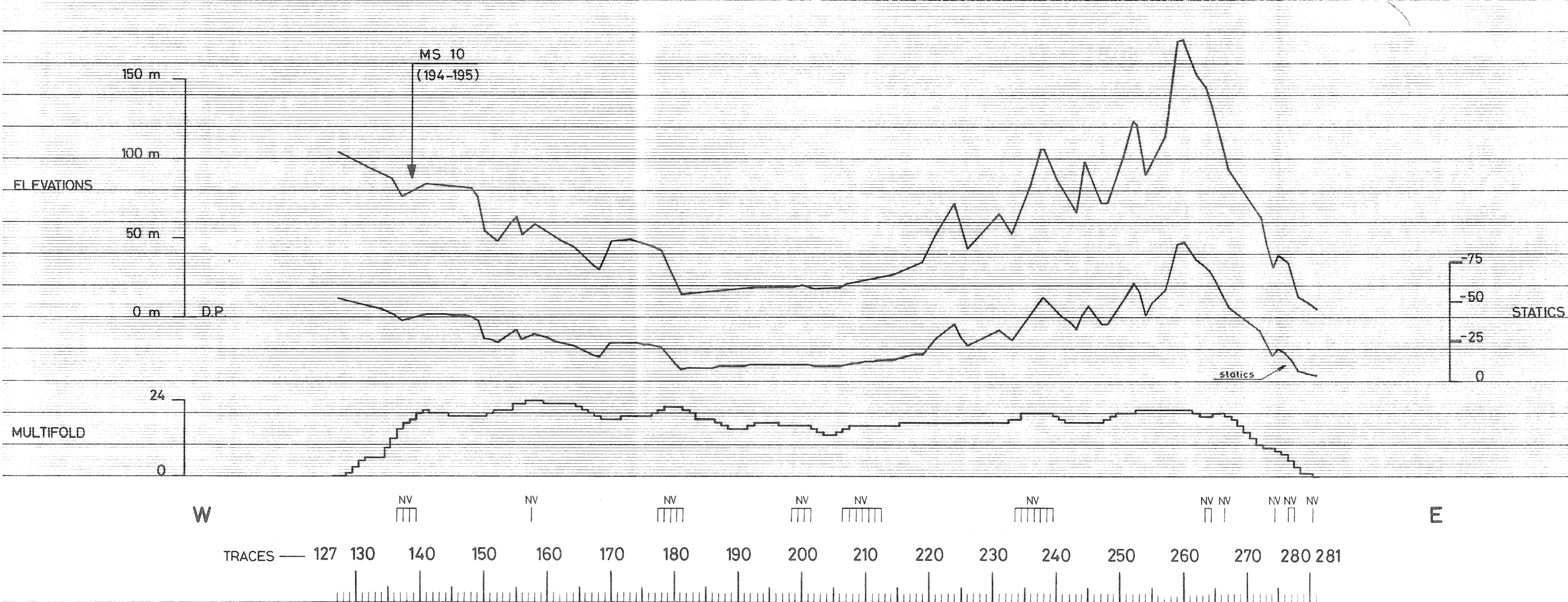
W 127 LINE MS 02 281 E

CDP fold 24
 DISPLAY 2400 x STACK
 VELOCITY of HOMOGENEITY : 5000 m/s
 SCALE 1 25 000
 DATUM PLANE AT 0 m

PROCESSING	
1. TIME VARIABLE FILTER 2. SPATIAL FILTER (S/N IMPROVEMENT) 3. GRAVE FOLD (2x) 4. A/D CONVERSION FROM DPC TO 1P 5. A/D CONVERSION FROM DPC TO 1P 6. A/D CONVERSION FROM DPC TO 1P	1. TIME VARIABLE FILTER 2. SPATIAL FILTER (S/N IMPROVEMENT) 3. GRAVE FOLD (2x) 4. A/D CONVERSION FROM DPC TO 1P 5. A/D CONVERSION FROM DPC TO 1P 6. A/D CONVERSION FROM DPC TO 1P



DATE MAY 31 77
 CHECKED



DEPTH (m)	TRACE 127	TRACE 130	TRACE 140	TRACE 150	TRACE 160	TRACE 170	TRACE 180	TRACE 190	TRACE 200	TRACE 210	TRACE 220	TRACE 230	TRACE 240	TRACE 250	TRACE 260	TRACE 270	TRACE 280	TRACE 281
000	*	*	*	*	*	*	*	*	*	*	*	*	*	*	*	*	*	*
200	200	1949	1974	1974	*	*	*	*	*	*	*	*	*	*	*	*	*	*
400	400	2112	1960	2024	*	*	*	*	*	*	*	*	*	*	*	*	*	*
600	600	2190	1990	2188	*	*	*	*	*	*	*	*	*	*	*	*	*	*
800	800	2199	2200	2299	*	*	*	*	*	*	*	*	*	*	*	*	*	*
1000	1000	2426	2477	2351	*	*	*	*	*	*	*	*	*	*	*	*	*	*
1200	1200	2577	2580	2396	*	*	*	*	*	*	*	*	*	*	*	*	*	*
1400	1400	2695	2671	2433	*	*	*	*	*	*	*	*	*	*	*	*	*	*
1600	1600	2766	2777	2489	*	*	*	*	*	*	*	*	*	*	*	*	*	*
1800	1800	2880	2779	2571	*	*	*	*	*	*	*	*	*	*	*	*	*	*
2000	2000	3017	2887	2602	*	*	*	*	*	*	*	*	*	*	*	*	*	*
2200	2200	3129	3024	2692	*	*	*	*	*	*	*	*	*	*	*	*	*	*
2400	2400	3222	3117	2767	*	*	*	*	*	*	*	*	*	*	*	*	*	*
2600	2600	3301	3242	2887	*	*	*	*	*	*	*	*	*	*	*	*	*	*
2800	2800	3368	3328	3042	*	*	*	*	*	*	*	*	*	*	*	*	*	*
3000	3000	3427	3402	3177	*	*	*	*	*	*	*	*	*	*	*	*	*	*
3200	3200	3478	3468	3295	*	*	*	*	*	*	*	*	*	*	*	*	*	*
3400	3400	3523	3526	3399	*	*	*	*	*	*	*	*	*	*	*	*	*	*
3600	3600	3564	3576	3499	*	*	*	*	*	*	*	*	*	*	*	*	*	*
3800	3800	3599	3636	3568	*	*	*	*	*	*	*	*	*	*	*	*	*	*
4000	4000	3669	3704	3679	*	*	*	*	*	*	*	*	*	*	*	*	*	*
4200	4200	3733	3766	3764	*	*	*	*	*	*	*	*	*	*	*	*	*	*
4400	4400	3790	3822	3767	*	*	*	*	*	*	*	*	*	*	*	*	*	*
4600	4600	3843	3877	3817	*	*	*	*	*	*	*	*	*	*	*	*	*	*
4800	4800	3891	3928	3866	*	*	*	*	*	*	*	*	*	*	*	*	*	*
5000	5000	3935	3963	3911	*	*	*	*	*	*	*	*	*	*	*	*	*	*

I RECORDING TECHNIQUE: VIBROSEISMIC

1. LAND SURVEY

SHOT POINT	
------------	--

2. SPREAD

Vibration station (VS)	Geophone spread
No. of stations: 3	No. of geophones: 48
No. of geophones per station: 8	No. of geophones per trace: 36
Station spacing: 12.5 m	Trace spacing: 50 m
Shot offset: 0 to 200 m	Shot offset: 0
Shot interval: 12 s	Shot length: 9 s

SPREAD CONFIGURATION

II RECORDING PARAMETERS

RECORDING EQUIPMENT: SN 338A + TIGRE III GEOPHONES: type SENSOR SMU 4U frequency 10 Hz

AMPLIFIERS	FILTERS
Binary gain	LF 10 Hz
Floating point	HF 62.5 Hz
	Notch filter ON

Length of record: 9 + 6 = 15 s Sampling: 4 ms

III SURFACE CORRECTIONS

1. METHOD: Altimetry

2. VELOCITIES: $V_c = 2000$ m/s

COMMENTS

Recorded: APRIL 19 77