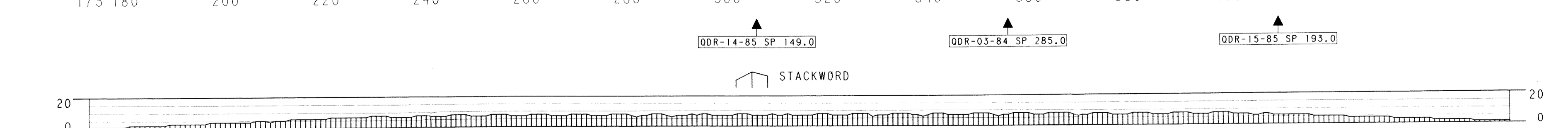
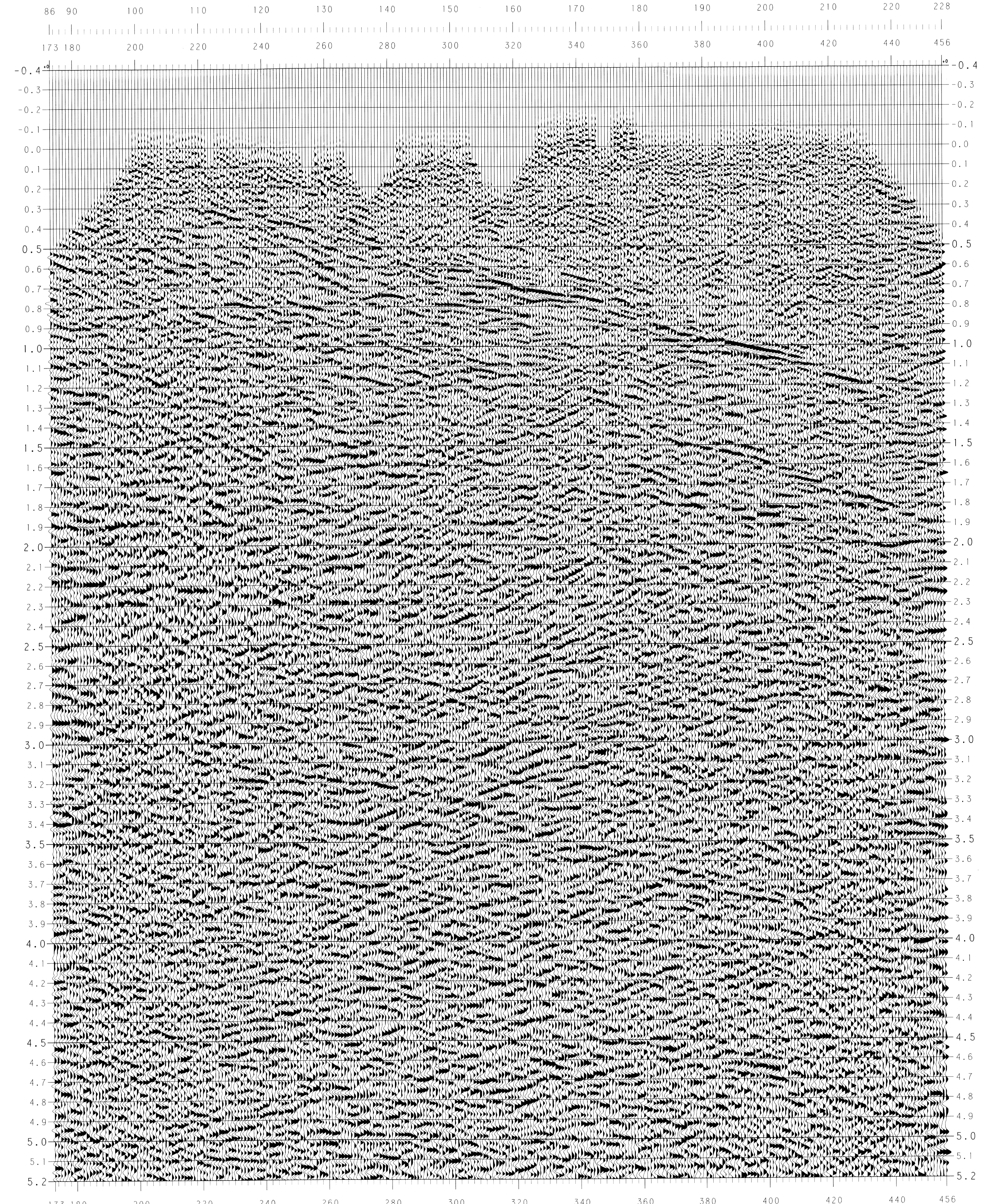


STATION	TIME	DEPTH	CHARGE	DEPTH OF CHARGE	S.P. INTERVAL
149.0	0.00	2400	2400	18.00	160 M
285.0	0.00	2400	2400	18.00	160 M
193.0	0.00	2400	2400	18.00	160 M



28 DEC 1989
5007
U-355



PERMIT
MONTENERODOMO
ITALY



W.G.C. CONTRACT: OCTOBER, 1985
DATE SHOT: MAY 1986
PROCESSED IN LD: MAY 1986
DATABASE: 05410M
STACK REEL: 515245

RECORDING DATA	PROCESSING SEQUENCE
RECORDING PARAMETERS RECORDING INSTRUMENT: DFS-V RECORD LENGTH: 4 SECONDS RECORDING FILTER: 12.0-128 HZ SAMPLING RATE: 2 MS RECORDING TAPE FORMAT: SEG B 6250 OPT	EDIT/DEMULIPLX ALL POINTS DISPLAY EDIT OUT BAD TRACES
SOURCE SOURCE: DYNAMITE NO. OF HOLES/SP: 18 CHARGE: 2400 G DEPTH OF CHARGE: 18.00 M S.P. INTERVAL: 160 M	PREPROCESSOR A) SUB-SAMPLE TO 4 MS B) GEOMETRIC SPREADING FUNCTION C) TRACE SEQUENTIAL D) DATUM PLANE: 800 M
RECEIVER NUMBER OF GROUPS: 60 GEOPHONES PER GROUP: 3440 GEOPHONE TYPE: 12Z GROUP INTERVAL: 40 M	SURFACE CONSISTENT DECONVOLUTION A) MIN PHASE INVERSE FILTER B) MIN PREDICTIVE LAG GAP: 20 MS C) ACTIVE OPERATOR LENGTH: 160 MS D) COMMON DEPTH POINT GATHER E) TRACE BALANCE
SPREAD DIAGRAM 	REFLECTION STATICS UPDATE BASED ON EGRM TECHNIQUE
AREA MAP 	VELOCITY ANALYSIS CONSTANT VELOCITY STACK PANELS ON 15 CDP'S FOR 30 VELOCITIES AUTO RESIDUAL STATICS (MISERIT) WINDOW: 100-3000 MS MAX SHIFT LIMIT: 25 MS
LEGEND VELOCITY FUNCTION INTERSECTIONS	VELOCITY ANALYSIS CONSTANT VELOCITY STACK PANELS ON 15 CDP'S FOR 30 VELOCITIES AUTO RESIDUAL STATICS (MISERIT) WINDOW: 100-3000 MS MAX SHIFT LIMIT: 25 MS
STATICS NMO-MODE 750% DMO STACK FINAL VELOCITIES TIME VARIANT FILTER TIME SECS: LC INZ/DB/OUT.MG 0.000 14/24 40/72 2.000 12/24 40/72 3.000 10/24 35/72 5.000 10/24 30/72	TRACK COLLIMATION RMS GAIN 200-400 MS WINDOW PLAYSERCH GEDSPACE PLOTTER: 64/10 PRESENTATION: VA/10 GAIN: 100 BIAS: -3 DISPLAY POLARITY: NORMAL
SCALES HORIZONTAL: 1:12,500 VERTICAL: 1:25,000 10 CM/SEC 5 CM/SEC KILOMETERS	

