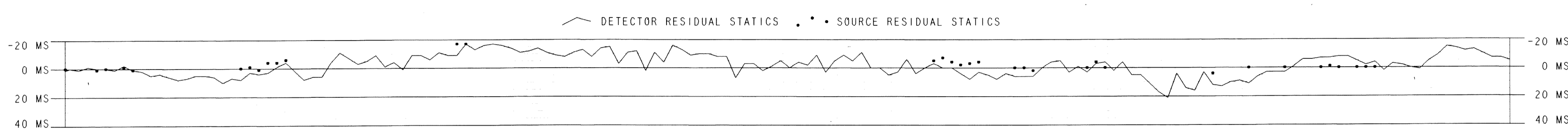
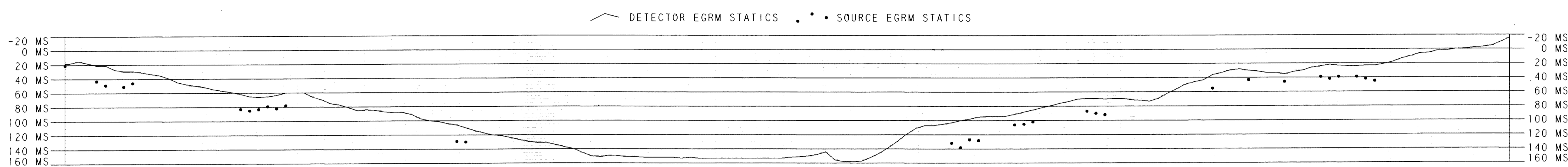
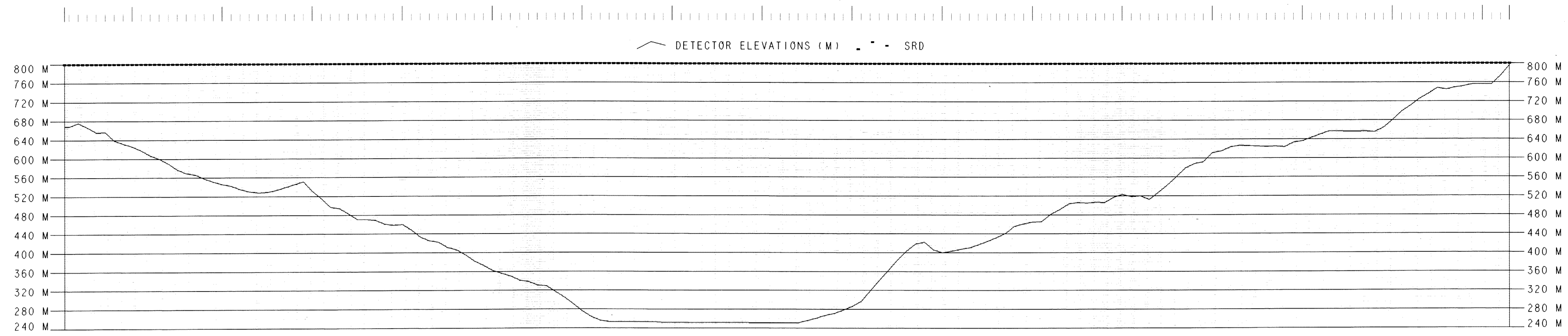


LINE CH-308-77
EGRM,DBS,1200% STK,RPFF,
TVF,GAIN

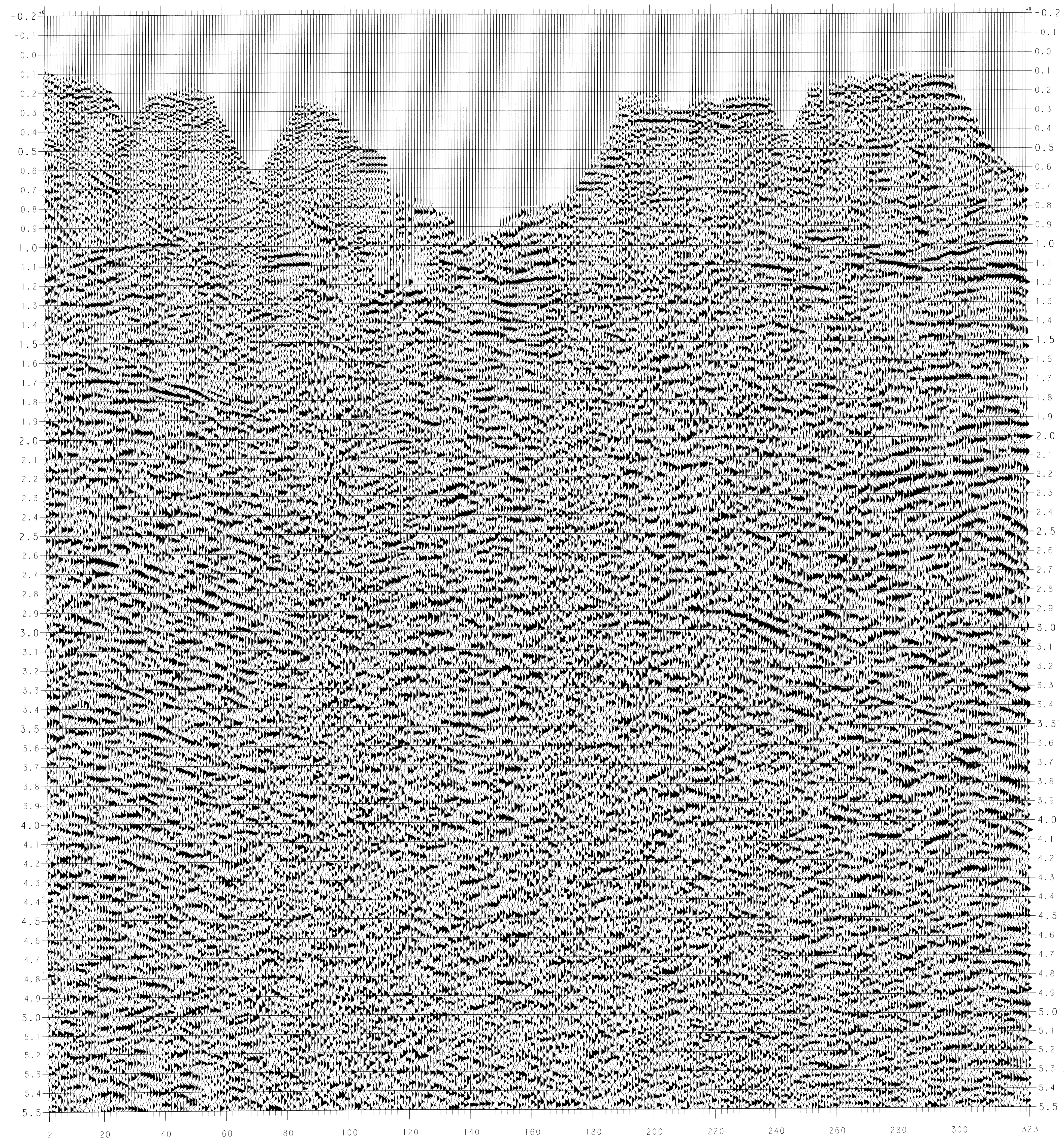
STN 372 380 390 400 410 420 430 440 450 460 470 480 490 500 510 520 530533 STN



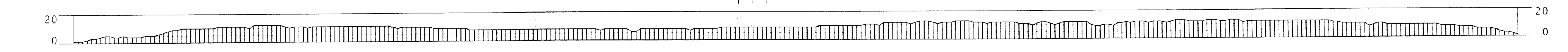
STATION	TYPE	DEPTH (M)	SP	SRD
PEN-11	SP	149.5		
CH-382-80	SP	629.5		
CH-380-80	SP	352.0		
CH-308NE77	SP	584.0		

STN 372 380 390 400 410 420 430 440 450 460 470 480 490 500 510 520 530533 STN

CDP 2 20 40 60 80 100 120 140 160 180 200 220 240 260 280 300 323 CDP



STACKWORD



LINE: CH-308-77

STN 548 TO STN 372
SP 518 TO SP 372

NORTHEAST

EGRM,DBS,1200% STK,RPFF,
TVF,GAIN

28 JUL 1989
Project 5007
M-333R



PERMIT
MONTENERODOMO
ITALY



W.G.C. CONTRACT...
DATE SHOT...
SHOT BY...
CREW NO...
PROCESSED IN LOC...
DATABASE...
STACK REEL NO...

RECORDING DATA	PROCESSING SEQUENCE
RECORDING PARAMETERS RECORDING INSTRUMENT: HDR-4200 RECORD LENGTH: 7 SECONDS RECORDING FILTER: 15 TO 100 Hz SAMPLING RATE: 2 MS	PREPROCESSOR A) SUB-SAMPLE TO 4 MS B) GEOMETRIC SPREADING FUNCTION C) TRACE SEGMENTAL D) DATUM PLANE: 800 M
SOURCE SOURCE: DYNAMITE NO. OF HOLES/SP: 8 CHARGE: 20 KG DEPTH OF CHARGE: 24 M S.P. INTERVAL: 160 M	REFRACTION STATICS UPDATE BASED ON EGRM TECHNIQUE VELOCITY ANALYSIS CONSTANT VELOCITY STACK PANELS ON TO CDP'S FOR 10 VELOCITIES
RECEIVER NUMBER OF GROUPS: 96 NO. OF STATIONS PER GROUP: 16 GEOPHONIC TYPE: 3M-4 GROUP INTERVAL: 40 M	AREA MAP Map showing the location of the survey line in Italy, near the Mediterranean Sea.
SPREAD DIAGRAM Diagram showing the spread geometry with a 40m group interval.	STATICS (NMO-NMTE) 2002 STRETCH 2002% FINAL STACK FINAL VELOCITIES
SCALE HORIZONTAL: 1:12,500 VERTICAL: 1:25,000	LEGEND V: VELOCITY FUNCTION I: INTERSECTIONS D.C. FOR W.G.C.

