

RIGO & ASSOCIATES

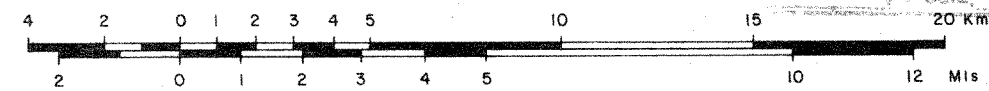
Allegato 3

PROVINCIA PETROLIFERA
DELL' APPENNINO MESOZOICO MERIDIONALE
PERMESSO "MONTEMARANO"

SEZIONE GEOLOGICA

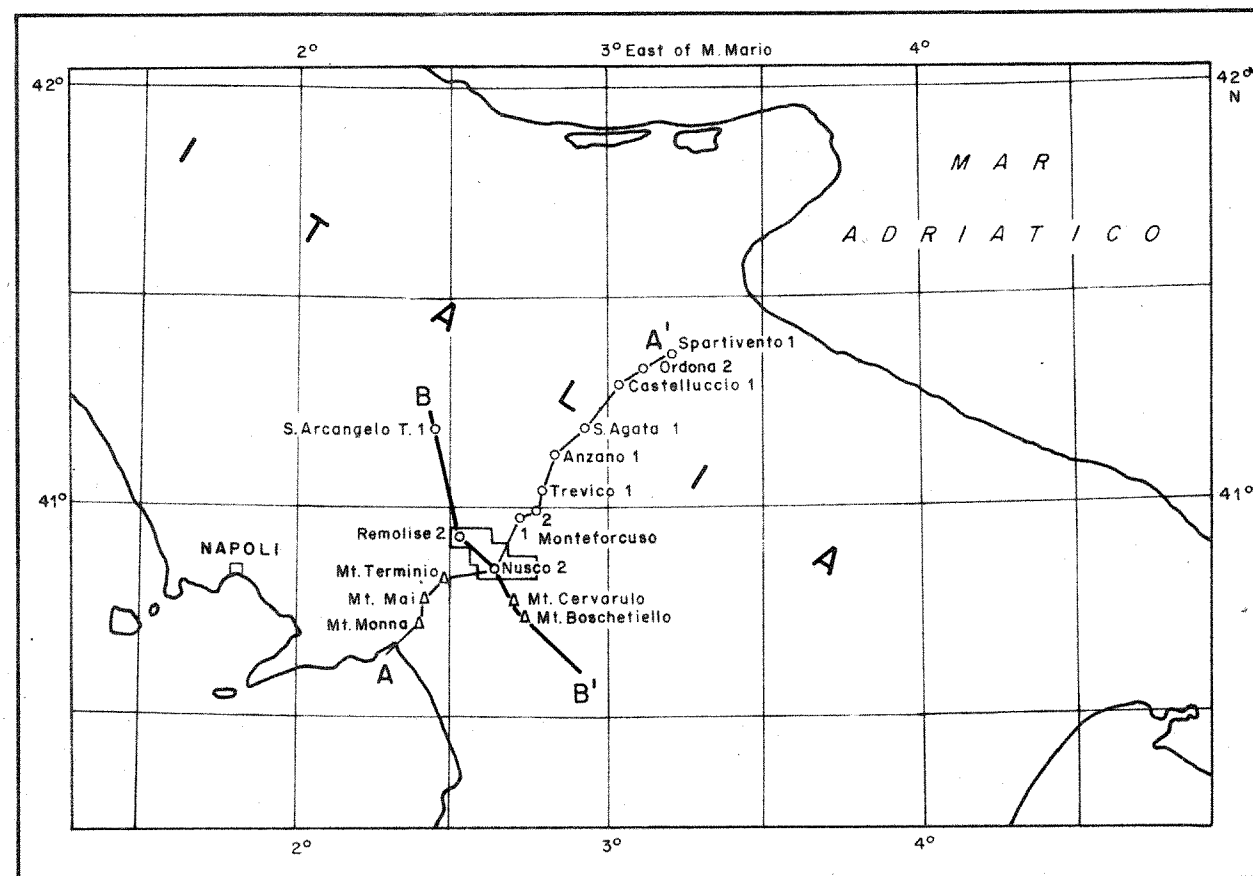
B-B'

SCALA 1:200.000

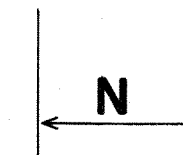


REGIONE IDROCARBURI
DI NAPOLI
8 NOV. 1982
Prov. 5543
Posiz.

CARTA INDICE



B



S. ARCANGELO T. 1

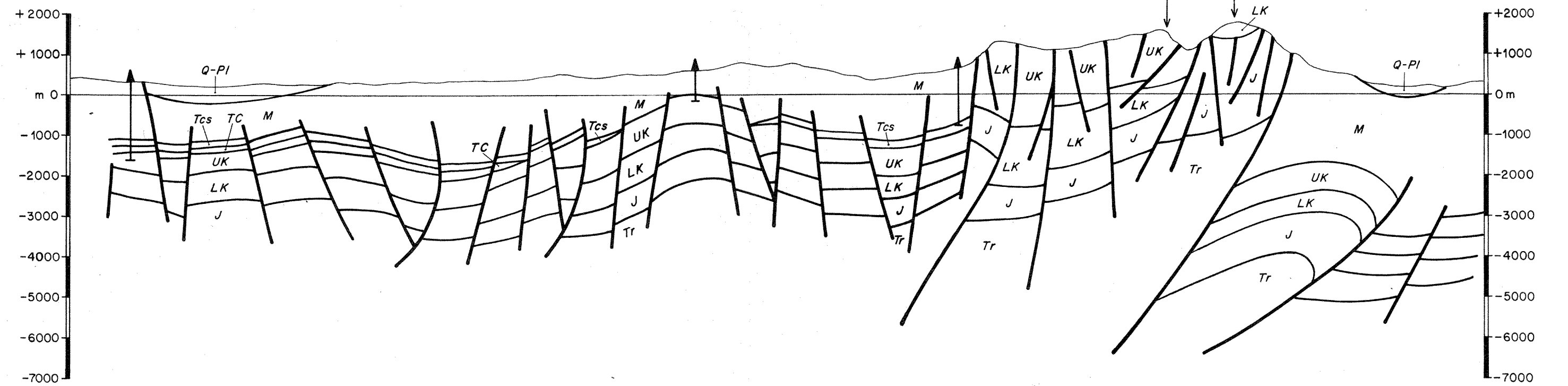
S NW

PERMESSO "MONTEMARANO"
REMOLISE 2 NUSCO 2

B'

SE

Mt. Cervarulo Mt. Boschetiello



- | | | | |
|------|--|----|--------------------|
| Q-PI | QUATERNARIO-PLIOCENE | UK | CRETACEO SUPERIORE |
| M | FLYSCH MIOCENICO
(DEPOSITI CAOTICI) | LK | CRETACEO INFERIORE |
| Tcs | SUBSTRATO CALCAREO
TERZIARIO | J | GIURASSICO |
| TC | CLASTICI DEL TERZIARIO | Tr | TRIASSICO |