



3456/4/6 MASTERLOG

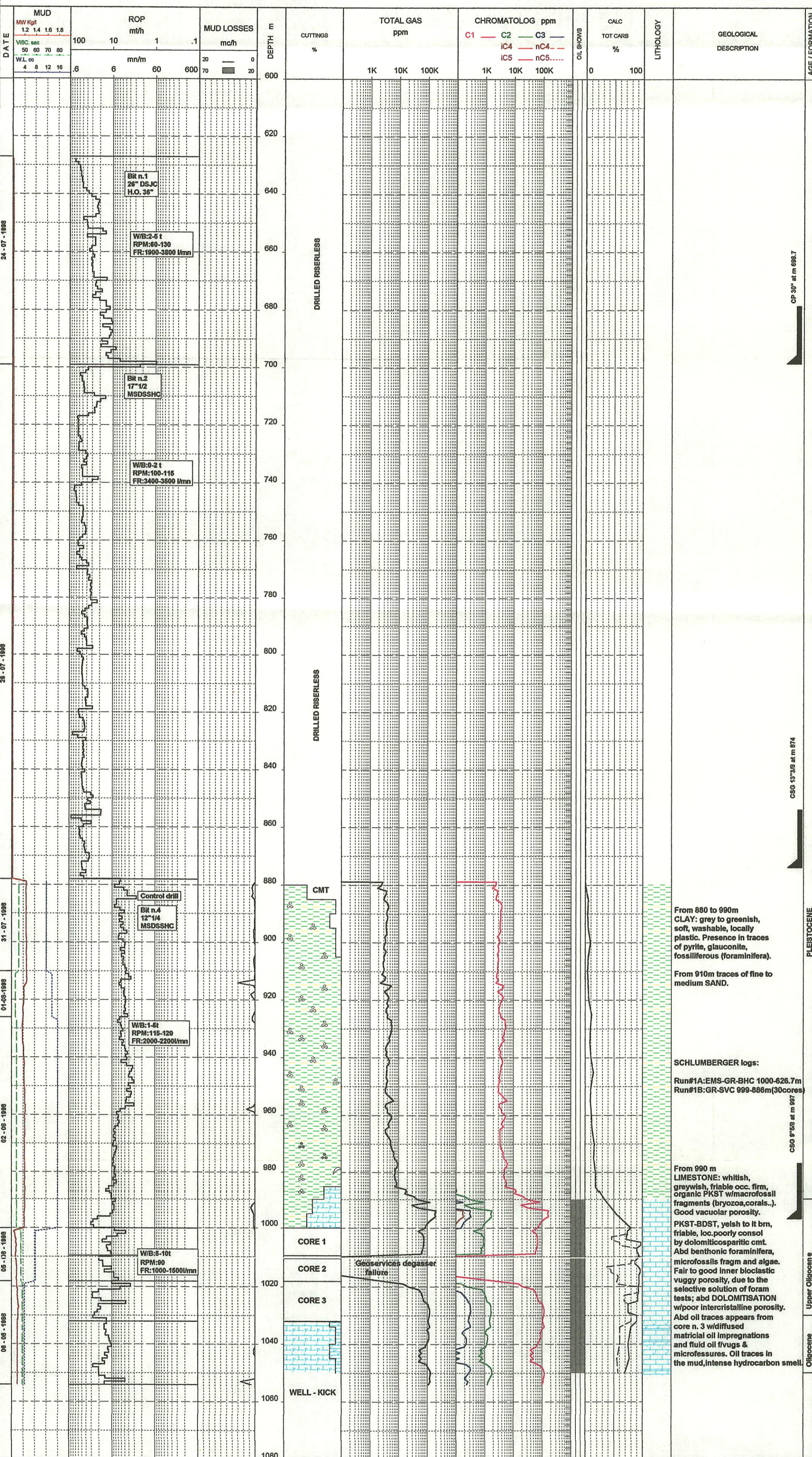


Well name : GIOVE 1	Block : D.R 71. ET	Rig Name : ATWOOD EAGLE
Comp. name : ENTERPRISE	Country : ITALY	Rig Type : SEMI-SUB
R.T.-MSL m : 22.3	Final TD m : 1054	Longitude : 18°16'42.36 E (ROME 1924)
R.T.-Seabed m : 626.6	Final TVD m : 1054	Latitude : 40°49'55.84 N

FROM m : 600 TO m : 1080 SCALE : 1/1000

Generated by ALX Package

- | | | | | | | | | |
|------------------|-------------------|-----------------|-----------------|-----------------|-----------------|----------------|-----------------|-----------------|
| Limestone | Limestone recr | Mudstone | Wackestone | Packstone | Grainstone | Boundstone | Chalk | Dol Limestone |
| Calc. Dolomite | Dolomite | Dolomite m/c | Dolomite ff | Rocks fragments | Boulders | Cobbles | Pebbles | Granules |
| coarse Sand | medium Sand | fine Sand | Silt | Breccia | Conglomerate | Sandstone | Clay, Shale | silty Shale |
| sandy Shale | Marl | silty Marl | sandy Marl | Gypsum | Salt | Coal | Chert | bedded Chert |
| Chert nodules | Calcite | Oolitic LMST | Reefal LMST | Coquina LMST | Bioclastic LMST | Pellet LMST | shell Breccia | Sandy Dolomite |
| Nodular LMST | Sandy LMST | Argill. LMST | Phosphatic LMST | Silicified LMST | Bitum. LMST | Calcarenite | Chara Oogons | Thaumatoporella |
| Megafoossils | Algae | Foraminifera in | Fossils fragmen | Dasycladaceae | encrusting Alga | solenoporaceae | massive bedding | metre bedded |
| decimetre bedded | centimetre bedded | parallel lamina | cross bedding | trough cross be | cross laminatio | graded bedding | Teet | Mud loss |
| Mud gain | Deviation curve | Core | Sidewall Core | DST | FIT | RFT | | |



CP 30" at m 698.7

CSC 13" 3/8 at m 874

CSC 9" 5/8 at m 897