

Computer Processed Interpretation

CORIBAND 4278

Using the following logs:  
BHC-GR, DLI-MSEI, FDC-ONT

COMPANY: MONTEDISON  
WELL: MITLA 5  
FIELD: WILDCAT  
COUNTRY: ITALY  
REFERENCE N°: 513.12300  
PROCESSING N°: 1  
DATE LOGGED: 28-DEC-79  
DATE PROCESSED: 12-FEB-80

LOCATION: LAT: 36° 44' 14" N  
LONG: 16° 30' 11" E  
ELEV: KB 331 DF 321 GL -1911

The well name, location and borehole reference data were furnished by the customer

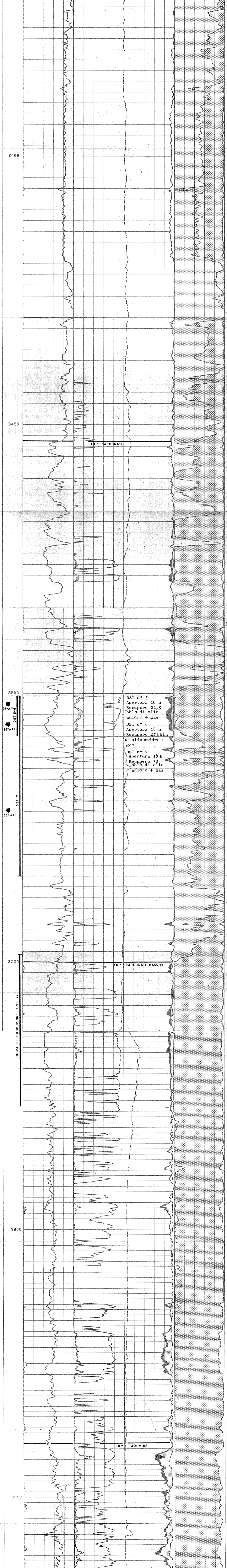
All interpretations are opinions based on inferences from electrical or other measurements and we cannot, and do not guarantee the accuracy or correctness of any interpretations, and we shall not, except in the case of gross or willful negligence on our part, be liable or responsible for any loss, costs, damages or expenses incurred or sustained by anyone resulting from any interpretation made by any of our officers, agents or employees. These interpretations are also subject to Clause 7 of our General Terms and Conditions as set out in our current Price Schedule

Computation Center: I.O.I Programs used: PRE023.E08 COR013.E06 Analyst: BM/STARK

PARAMETERS

Depth Interval	Rw	Rmf	Rcl	Δtcl	Ø Ncl	ρbcl	ρh	T <sub>F</sub>
From To								
3668 3562	.02	.33	1.6	105	49	2.3	.8	220

Remarks



DST n° 5  
Apertura 10 h  
Recupero 22,5  
bbbs di olio  
anidro + gas

DST n° 6  
Apertura 18 h  
Recupero 47 bbbs  
di olio anidro +  
gas

DST n° 7  
Apertura 18 h  
Recupero 50  
bbbs di olio  
anidro + gas

PROVA DI PRODUZIONE  
7 1.5 2.2 1.5 2.2