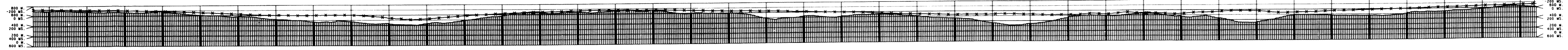




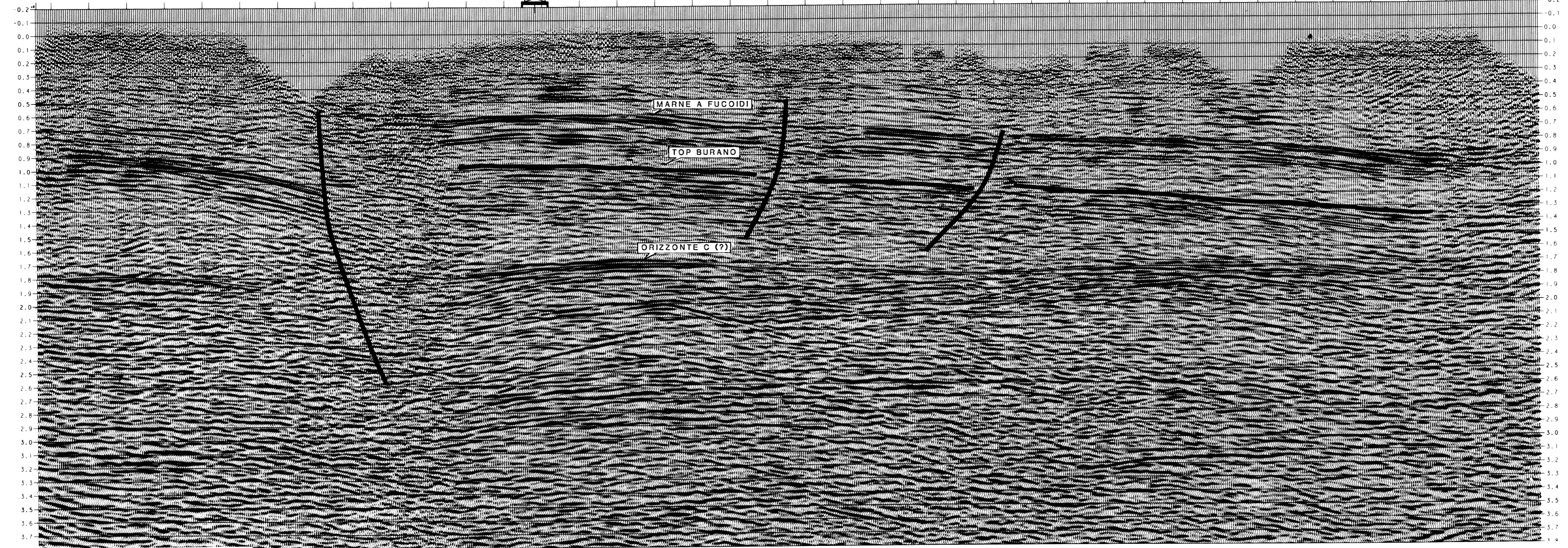
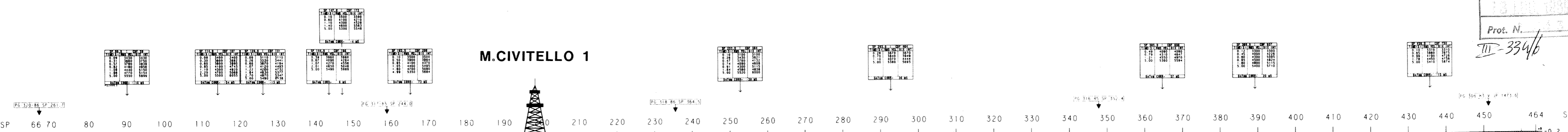
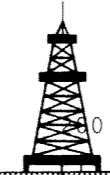
Allegato	Data	Dis.n.
3	MAG. 1989	816/2

ELEVATIONS CDF DATUM STATICS CORRECTION



SEZIONE IDROCARBURI  
di ROMA  
13 MAR 1989  
Prot. N. 332  
III-334/b

M.CIVITELLO 1



<b>RECORDING DATA</b>		<b>PROCESSING SEQUENCE</b>	
SHOT BY: O.S.S. DATE SHOT: APRIL 88 DATUM PLANE / STATICS INFO: 500 WT REVISION NO. VELOC: UP HOLE DOWNSHOLE REPLACEMENT: 5000 W/SEC		PROCESSED BY: GEOTALKA DATE PROCESSED: JUNE 1988 DEMULTIPLY TO S.R.: 4 GEOPHONE AMPLITUDE OUTPUT ALL POINT DISPLAY FOR MANUAL EDITING	
<b>INSTRUMENTS</b> RECORDING SYSTEM: SN 388 E FORMER: SEC 8 RECORDING LOWCUT FILT.: 12 HZ/18 DB/OCT ANTIALIAS FILTER: 178 HZ DB/OCT MUX FILTER: 50 HZ SAMPLE RATE: 7 SEC RECORD LENGTH: 7 SEC		<b>PREFILTER</b> TIME (SECS): HZ DD 0.002 18/18 OUT 1.500 14/18 OUT 2.000 12/18 OUT 7.500 8/18 OUT	
<b>SOURCE</b> ENERGY SOURCE: EXPLOSIVE SHOT HOLES/S.P.: 5/7 HOLE AVG CHARGE PER SHOT: 50/36 W AVG SHOT DEPT: 50/36 W		<b>PREPROCESSOR</b> RMS GAIN INSTRUMENT PHASE COMPENSATION RECORDER AND GEOPHONE RESPONSE SHAPED TO MINIMUM PHASE DECONV DECONVOLUTION TYPE: MINIMUM PHASE INVERSE FILTER NO. OF WINDOWS: 3 MIN/MAX PREDICTION DIST: 4 - 160 MS WHITE LITCH: ON OUTPUT AND CDF SORT RMS GAIN: ON OUTPUT AND CDF SORT	
<b>SEISMOMETER ARRAY</b> GEOPHONES PER GROUP: LIN 2440 GEOPHONE TYPE: SENSOR SM 4 GEOPHONE FREQUENCY: 10 HZ		<b>SPREAD CONFIGURATION</b> N. OF GROUPS: 120 GROUP INTERVAL: 55 M SUBSURFACE COVERAGE: 3000 M DIRECTION OF SHOOTING: EAST SPREAD: 1382.5M - 2782.5M SPREAD LENGTH: 1400 M	
<b>SPREAD CONFIGURATION</b> N. OF GROUPS: 120 GROUP INTERVAL: 55 M SUBSURFACE COVERAGE: 3000 M DIRECTION OF SHOOTING: EAST SPREAD: 1382.5M - 2782.5M SPREAD LENGTH: 1400 M		<b>AREA MAP</b> STATISTICAL APPROACH RANDOM NOISE ATTENUATION RNA FEED BACK: 20 % AT 2000MS FEED BACK: 30 % AT 3000MS FEED BACK: 30 % AT 7000MS TIME VARIANT FILTER TIME (SECS): L.C. (HZ DB/OCT) H.C. 0.010 16/18 80/48 0.800 14/18 70/48 2.000 12/18 60/48 3.000 10/18 50/48 7.000 8/18 40/48 RMS GAIN	
<b>HORIZONTAL SCALE</b> 1:25,000 5 CM/SEC 1 KILOMETER		<b>LEGEND</b> VELOCITY FUNCTION INTERSECTIONS O.C. FOR GEOTALKA	

LINE: PG-324-88  
SP 66 TO SP 464  
STACK