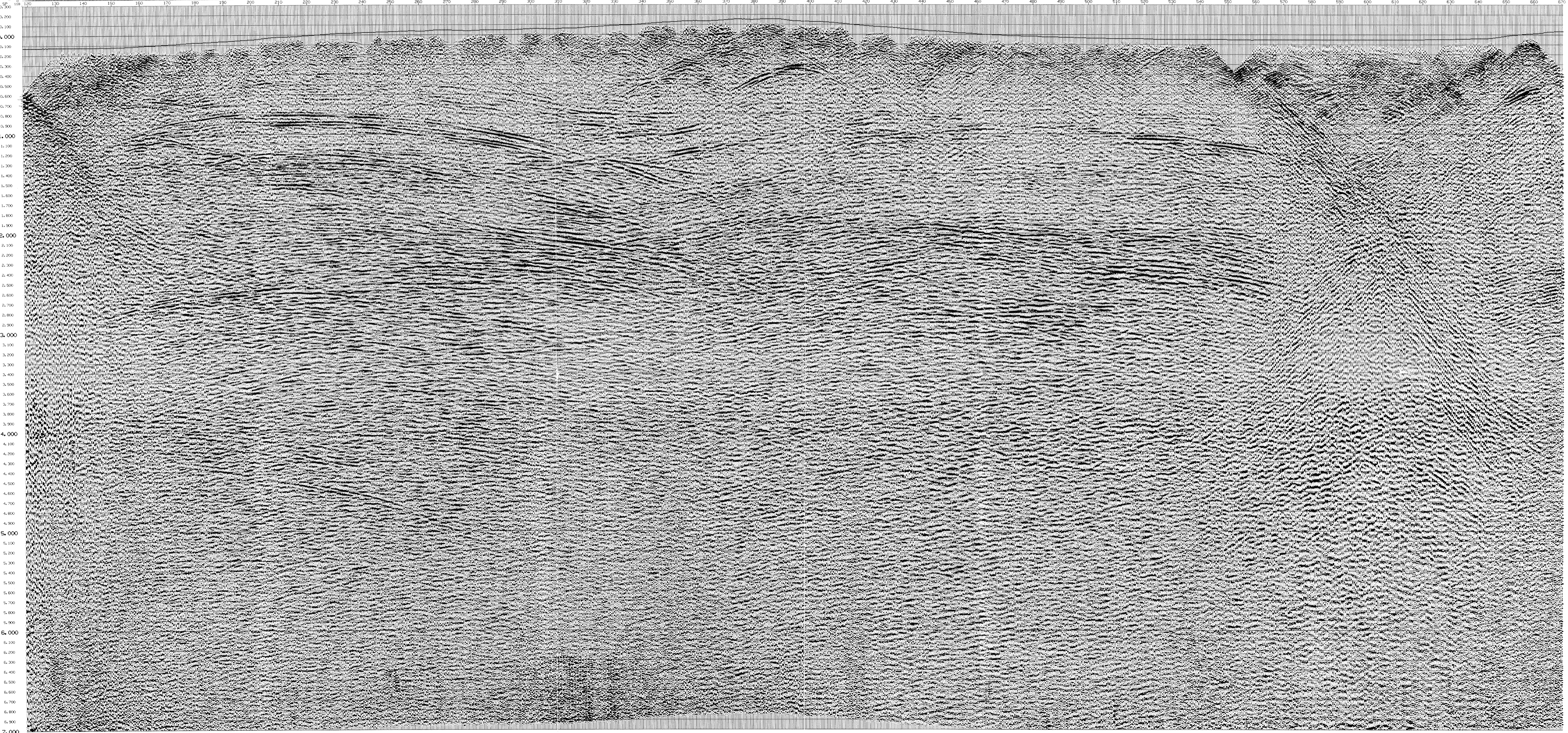
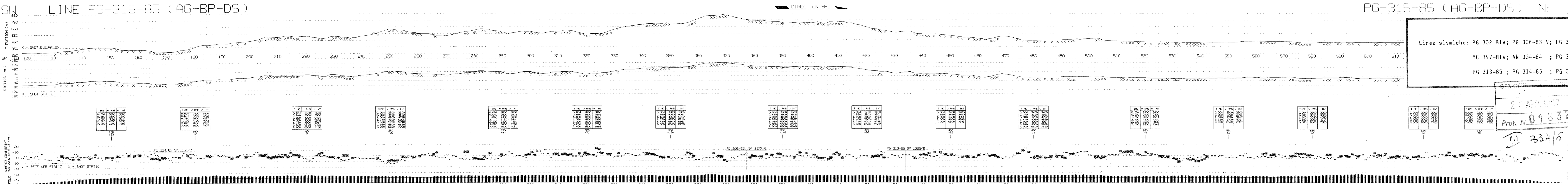


Linee sismiche: PG 302-81V; PG 306-83 V; PG 308-83 V
 NC 347-81V; AN 334-84 ; PG 312-85
 PG 313-85 ; PG 314-85 ; PG 315-85

AGIP-BP-DEUTSCHE SHELL
 AREA APPENNINO CENTRO SETT ITALIA
 LINE PG-315-85 SPS 118-670
 FINAL STACK

RECORDED BY: Pavia Seismos, Geo-PIS V
 PROCESSED BY: Seismograph Service (England) Ltd.
 SPECIAL REMARKS:
 - NO TILT CORRECTION COMPUTED USING
 - UNCLE TIME OF PRODUCTION SHOTS
 - FIRST BREAK PICKING AREAS OF MISSING SHOTS
 - UNCLE SURVEY 60% DEPTH 50-60m EVERY 2-3m
 - CONSTANT SUB-HEATHERING VELOCITY 3000m/s
 - RECEIVED THROUGH PHOENIX U.P.U.

25 FEB 1987
 Prot. N. 01832
 334/5



RECORDING PARAMETERS

INSTRUMENTS	SERIAL 340	SOURCE	CHASSIS
NO CHANNELS	2	DEPTH	40
FORMAT	SEB	NOMINAL DEPTH	50
SAMPLE RATE	2.5	ISOTHERMIC SPREAD	2000
RECORD LENGTH	10 hrs	ISOTHERMIC SPREAD	0.15 x 1000.50
REPEAT SECT	AREA	ISOTHERMIC SPREAD	0.15 x 1000.50
UNCLIP FILTER	OFF	ISOTHERMIC SPREAD	0.15 x 1000.50
LOW CUT FILTER	OFF	ISOTHERMIC SPREAD	0.15 x 1000.50
HIGH CUT FILTER	OFF	ISOTHERMIC SPREAD	0.15 x 1000.50
NOTCH FILTER	OFF	ISOTHERMIC SPREAD	0.15 x 1000.50
STATION	APPENNINO	ISOTHERMIC SPREAD	0.15 x 1000.50
NO. OF STATIONS	200	ISOTHERMIC SPREAD	0.15 x 1000.50
COVERAGE	90% (Normal)	ISOTHERMIC SPREAD	0.15 x 1000.50
RECORDING DATE	18th Nov 1985	ISOTHERMIC SPREAD	0.15 x 1000.50
RECORDING TIME	14h 10m	ISOTHERMIC SPREAD	0.15 x 1000.50
RECORDING SPEED	24 gspans/sec	ISOTHERMIC SPREAD	0.15 x 1000.50
RECORDING SCALE	100mV	ISOTHERMIC SPREAD	0.15 x 1000.50

PROCESSING

SEQUENCE	PARAMETERS
1. DATA CHECK	Refer to see binary data history
2. FILTER	INSTRUMENT AND GEOPHONE MADE CORRECTION FILTER
3. SCALED	Scale to max 100 gspans/sec, auto processing to 100%
4. STABILISE	STABILISE TO NEAR ZERO FLUCTUATING DATA
5. FILTER	CORRECTION FILTER USED 3000m/s, 100% STABILISE
6. FILTER	LOW CUT FILTER, 20 Hz, 100% STABILISE
7. FILTER	HIGH CUT FILTER, 10 Hz, 100% STABILISE
8. EQUALISATION	NO EQUALISATION
9. STRETCH	STRETCH TO 100% STABILISE
10. STRETCH	STRETCH TO 100% STABILISE
11. STRETCH	STRETCH TO 100% STABILISE
12. STRETCH	STRETCH TO 100% STABILISE
13. STRETCH	STRETCH TO 100% STABILISE
14. STRETCH	STRETCH TO 100% STABILISE
15. STRETCH	STRETCH TO 100% STABILISE
16. STRETCH	STRETCH TO 100% STABILISE
17. STRETCH	STRETCH TO 100% STABILISE
18. STRETCH	STRETCH TO 100% STABILISE
19. STRETCH	STRETCH TO 100% STABILISE
20. STRETCH	STRETCH TO 100% STABILISE
21. STRETCH	STRETCH TO 100% STABILISE
22. STRETCH	STRETCH TO 100% STABILISE
23. STRETCH	STRETCH TO 100% STABILISE
24. STRETCH	STRETCH TO 100% STABILISE
25. STRETCH	STRETCH TO 100% STABILISE
26. STRETCH	STRETCH TO 100% STABILISE
27. STRETCH	STRETCH TO 100% STABILISE
28. STRETCH	STRETCH TO 100% STABILISE
29. STRETCH	STRETCH TO 100% STABILISE
30. STRETCH	STRETCH TO 100% STABILISE
31. STRETCH	STRETCH TO 100% STABILISE
32. STRETCH	STRETCH TO 100% STABILISE
33. STRETCH	STRETCH TO 100% STABILISE
34. STRETCH	STRETCH TO 100% STABILISE
35. STRETCH	STRETCH TO 100% STABILISE
36. STRETCH	STRETCH TO 100% STABILISE
37. STRETCH	STRETCH TO 100% STABILISE
38. STRETCH	STRETCH TO 100% STABILISE
39. STRETCH	STRETCH TO 100% STABILISE
40. STRETCH	STRETCH TO 100% STABILISE
41. STRETCH	STRETCH TO 100% STABILISE
42. STRETCH	STRETCH TO 100% STABILISE
43. STRETCH	STRETCH TO 100% STABILISE
44. STRETCH	STRETCH TO 100% STABILISE
45. STRETCH	STRETCH TO 100% STABILISE
46. STRETCH	STRETCH TO 100% STABILISE
47. STRETCH	STRETCH TO 100% STABILISE
48. STRETCH	STRETCH TO 100% STABILISE
49. STRETCH	STRETCH TO 100% STABILISE
50. STRETCH	STRETCH TO 100% STABILISE

DISPLAY

SCALE	POLARITY
HORIZONTAL: 1:25,000	VERTICAL: 0.7mm/m
RECORDING: UPWARD	NEGATIVE
PROCESSED: UPWARD	NEGATIVE
STRETCH: UPWARD	NEGATIVE
AMPLITUDE: 100mV	100mV
DATE: FEBRUARY 1987	

