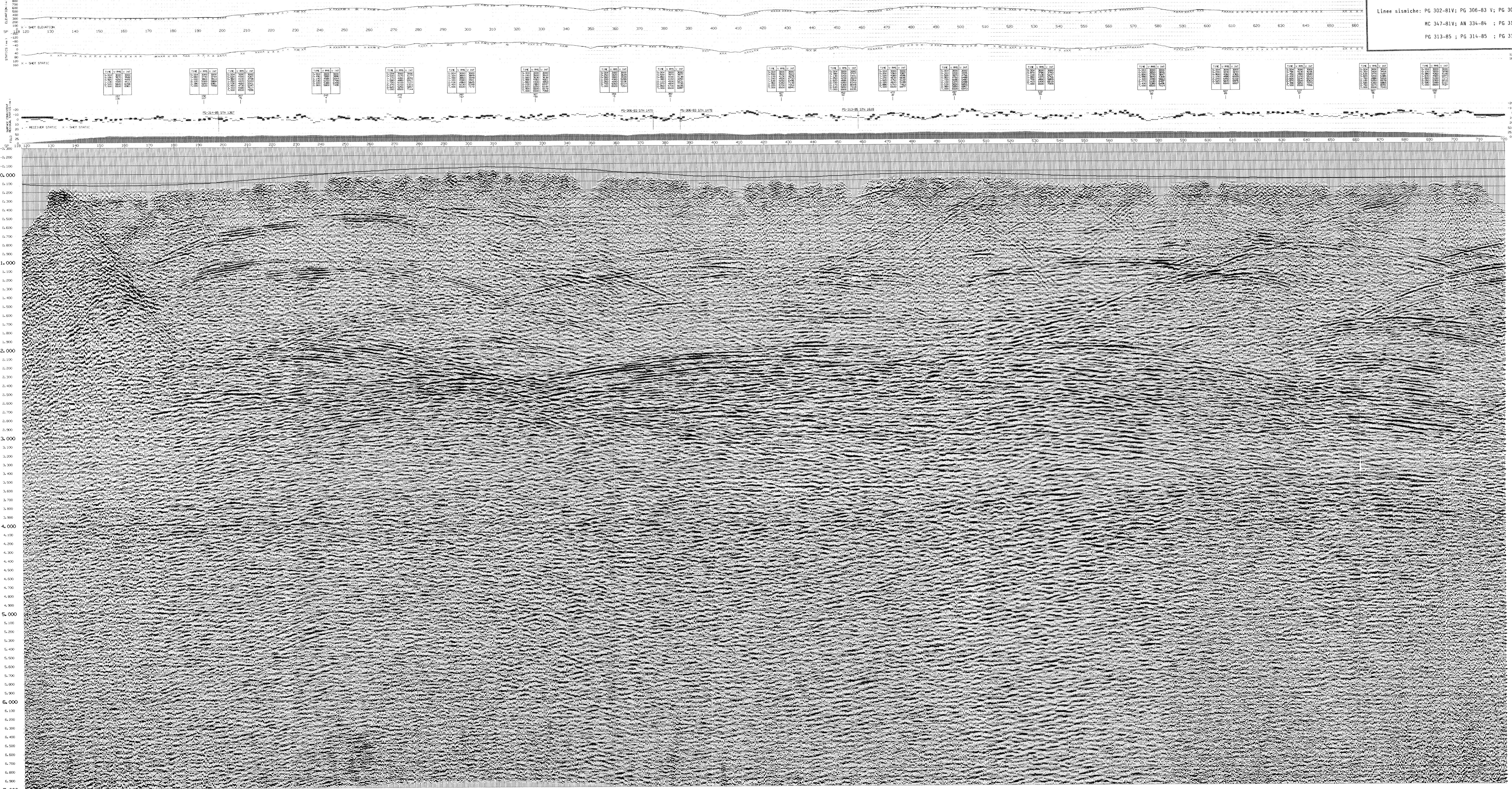


Linee sismiche: PG 302-81V; PG 306-83 V; PG 308-83 V
 MC 347-81V; AN 334-84 ; PG 312-85
 PG 313-85 ; PG 314-85 ; PG 315-85



AGIP-BP-DEUTSCHE SHELL
 AREA: APENNINO CENTRO SETT ITALIA
 LINE: PG-312-85 SPS 118-720
FINAL STACK
 RECORDED BY: Prota Sismos, Crew RIG X
 PROCESSED BY: Seismograph Service (England) Ltd.
 SPECIAL THANKS: STATIC CORRECTION COMPUTED USING: WHOLE TIME OF PRODUCTION SHOTS
 FIRST BREW PICKING AREAS OF MISSING SHOTS:
 UNABLE SURVEY AREA: DEPTH 50-150m DUE TO 20% CONSTANT SUBSAMPLING VELOCITY: 3000m/s
 PROCESSED THROUGH: PHOENIX U.P.P.U.

RECORDING PARAMETERS

NO. OF CHANNELS	24	RECORDING DATE	21 OCT 1982
NO. OF TRACES	24	RECORDING TIME	11:52
RECORD LENGTH	1200	RECORDING INTERVAL	0.2
RECORD FILTER	40 Hz	RECORDING RATE	2.000
RECORD FILTER	40 Hz	RECORDING DATE	21 OCT 1982
RECORD FILTER	40 Hz	RECORDING TIME	11:52
RECORD FILTER	40 Hz	RECORDING INTERVAL	0.2

PROCESSING PARAMETERS

SEQUENCE	PARAMETERS
1. DATA TRUNCATION	REMOVE TO 20% SURFACE SEEN RECEIVED
2. FILTER	DETECTION AND GEOPHONIC PHASE CORRECTION FILTER
3. SURF COND	GEOPHONIC CORRECTION
4. SURF COND (1)	STAT CORRECTION TO NEAR SURFACE FLOATING DATA
5. FILTER	GEOPHONIC CORRECTION
6. DECONVOLUTION	DECONVOLUTION FROM NORMAL VELOCITY TO NORMAL DEPT. PHASE
7. EQUALIZATION	EQUALIZATION FROM NORMAL VELOCITY TO NORMAL DEPT. PHASE
8. SORT	SORT TO COR ORDER (CLIP, INTERNAL, EX-OUT)
9. DATA GATE	REJECT FIRST AND LAST 5% OF DATA
10. AUTOMATIC (1)	REJECT FIRST AND LAST 5% OF DATA
11. DATA GATE	REJECT FIRST AND LAST 5% OF DATA
12. SURFACE (2)	GEOPHONIC CORRECTION TO SURF DATA
13. AUTOMATIC (2)	REJECT FIRST AND LAST 5% OF DATA
14. STACK	STACK WITH 10% CORRELATION FOR LINE FIELD
15. DECONVOLUTION	DECONVOLUTION FROM NORMAL VELOCITY TO NORMAL DEPT. PHASE
16. FILTER	DECONVOLUTION FILTER (0.5-2.0)
17. EQUALIZATION	EQUALIZATION FROM NORMAL VELOCITY TO NORMAL DEPT. PHASE

NOTE: * TYPES GIVEN TO NEAR SURFACE FLOATING DATA

SCALE DISPLAY POLARITY

HORIZONTAL	1:25000	RECORDING	UPWARD
VERTICAL	0.7	COMPRESSION	NEGATIVE
PLATE LEVEL	0.0	PROCESSING	POSITIVE
PLATE ZERO	0.0	RECORDED SIGNAL	NEGATIVE

