
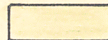
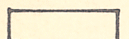
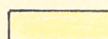
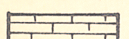

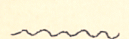

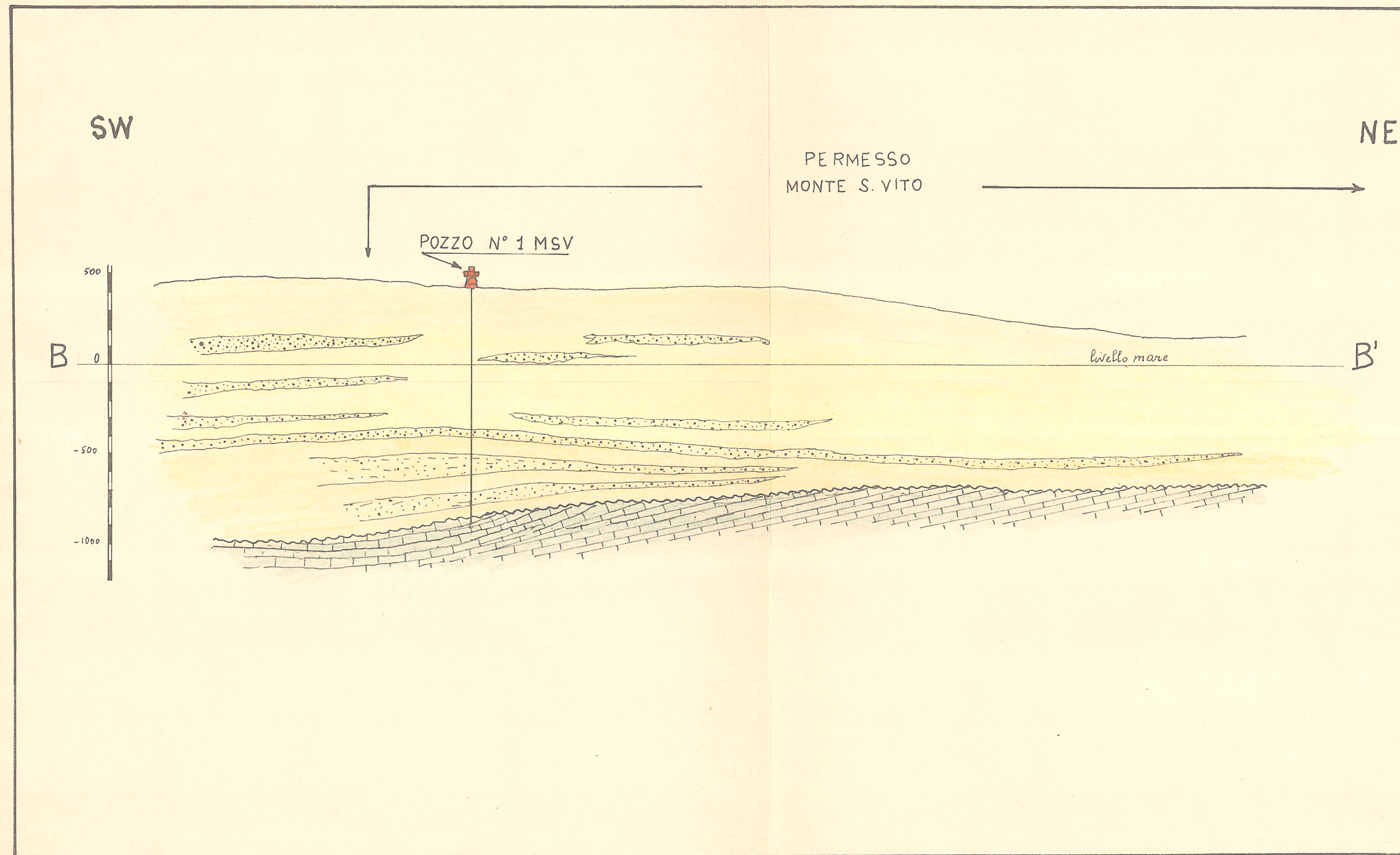


PROFILO GEOLOGICO ATTRAVERSO IL PERMESSO "MONTE S.VITO."

SCALA 1:25.000

LEGENDA:

- | | |
|---|---|
|  Sabbia |  Quaternario-Pliocene sup. |
|  Argilla |  Pliocene medio-superiore. |
|  Calcare |  Pliocene inferiore. |
|  Discordanza |  Cretaceo |



*Il geologo
 Baldreni*

SCALA 1:100.000

