

SEZ. 1

UFFICIO CONTITOLARI RICERCHE IDROCARBURI
APPENNINO SETTENTRIONALE

MONTE ACUTO PERMIT

CDP fold 6
Display 800 Stack

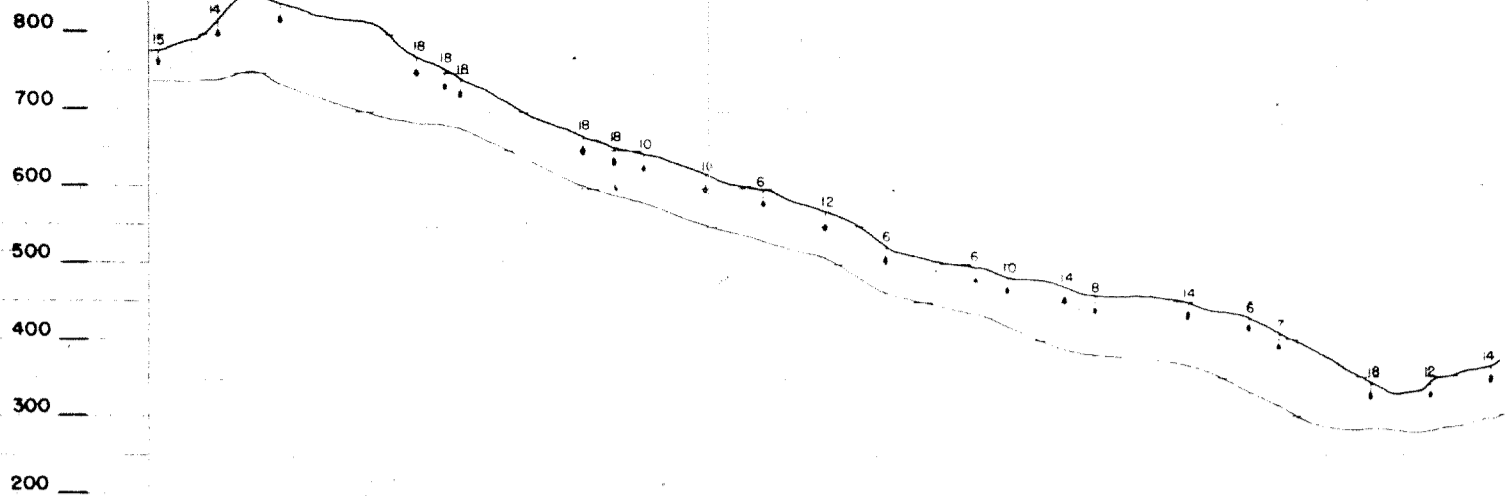
Scale 1 km
Datum plane at 0m
Homogeneity velocity 2500m/s

PROCESSING

- Automatic recovery
- Editing
- NMO Correction - CNMC - 1.1E-51
- Static correction
- Band pass filter 12 - 67.5
- Static correction - ANOVA - BNCS
RESUME 3000 - 3700 m/s
- Stack 600 3 fold



Date Oct. 8.71
Checked CHARLIER



STAT CORR
Max D/Ch/Tuh

Not Used	244	205	171	142
160	159	156 157 155	21/6/29	22/8/24

AVERAGE VELOCITY	INTERVAL
3500	10-18

32

I - Recording technic

- LAND SURVEY
Shot point 141 181
Coordinates & elevations by Tachometer WILD To and map 1/25000
- DRILLING
141 181
Drilled by WIRTH
Drilling conditions many difficulties
- SPREAD
SHOT POINT
Nb of holes: 1 unit charge: 18 kg
Depth: 20.24 m Total charge: 18 kg
Offset: 0.60 m
Shot hole pattern: 1 to the line
GEPHONE SPREAD
Nb of traces: 24 x 24 S.P. spacing: 200m
Nb of geophones tr: 24 Traces spacing: 50m
Shot Center shooting inner trace distance: 25m
Geophone pattern: two lines

SPREAD CONFIGURATION



II - Recording parameters

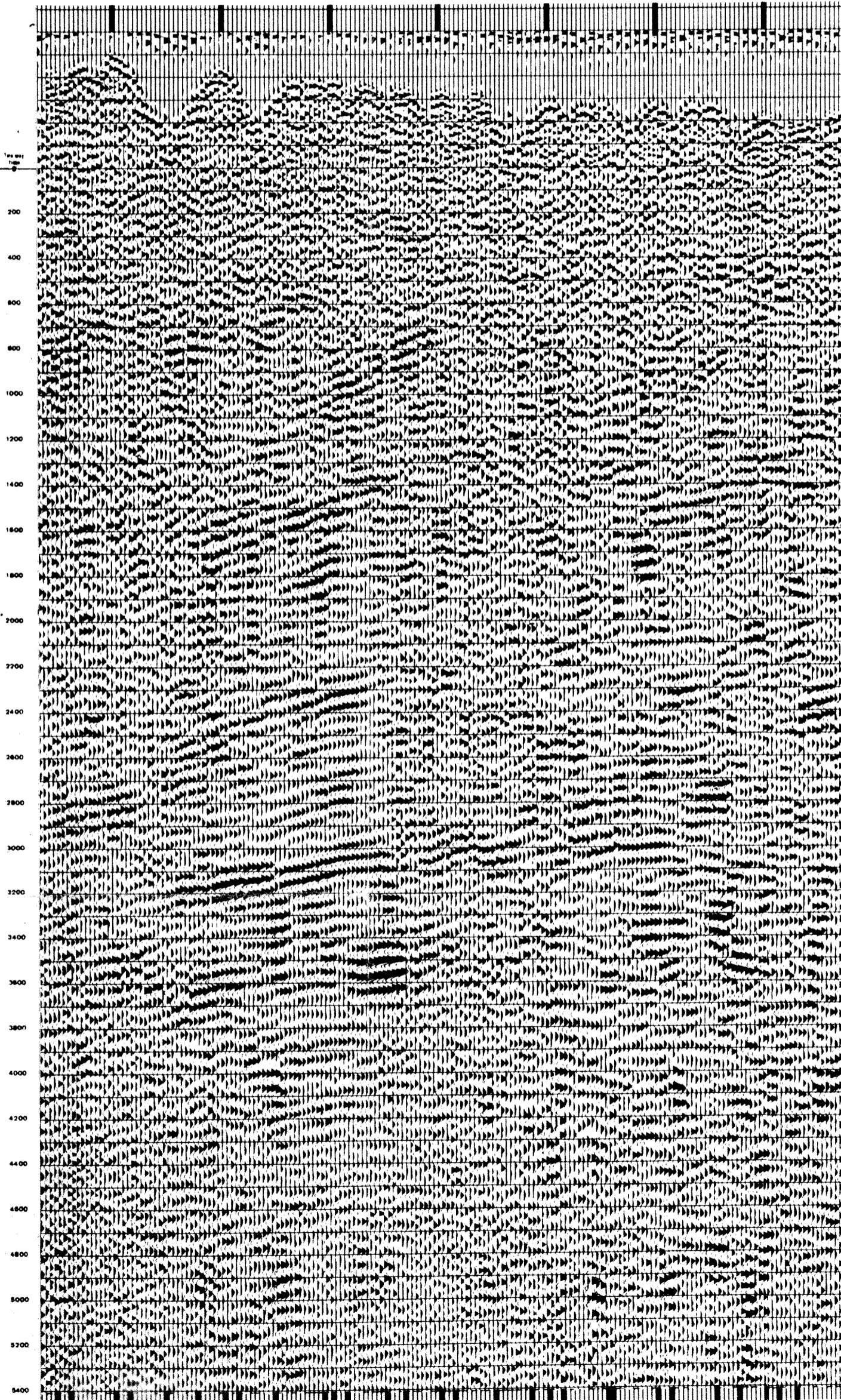
RECORDING DFS III
EQUIPEMENT 21 Tracks - 48 Channels
GEPHONES type HSJ frequency 14 cps
AMPLIFIERS
Fixed gain 36 db
Delay 224-352
Final gain 90 db
FILTERS
12/18 - 124

III - Surface corrections

- METHOD Delay time method
- VELOCITIES First velocity 1500 m/s
Reduction to the datum plane variable UCRIAS elevation method

Comments

Recorded 13/09 to 16/09, 1971



DEPTH (m)	VELOCITY (m/s)	INTERVAL
200	3500	
400	3500	17-50
600	3500	
800	3718	
1000	3850	
1200	3937	
1400	4000	15-45
1600	4125	
1800	4222	
2000	4300	
2200	4363	
2400	4416	
2600	4461	13-40
2800	4500	
3000	4533	
3200	4562	
3400	4582	
3600	4611	
3800	4631	
4000	4650	
4200	4666	10-40
4400	4681	
4600	4695	
4800	4708	
5000	4720	
5200	4730	
5400	4740	
5600	4750	
5800	4758	
6000	4766	