

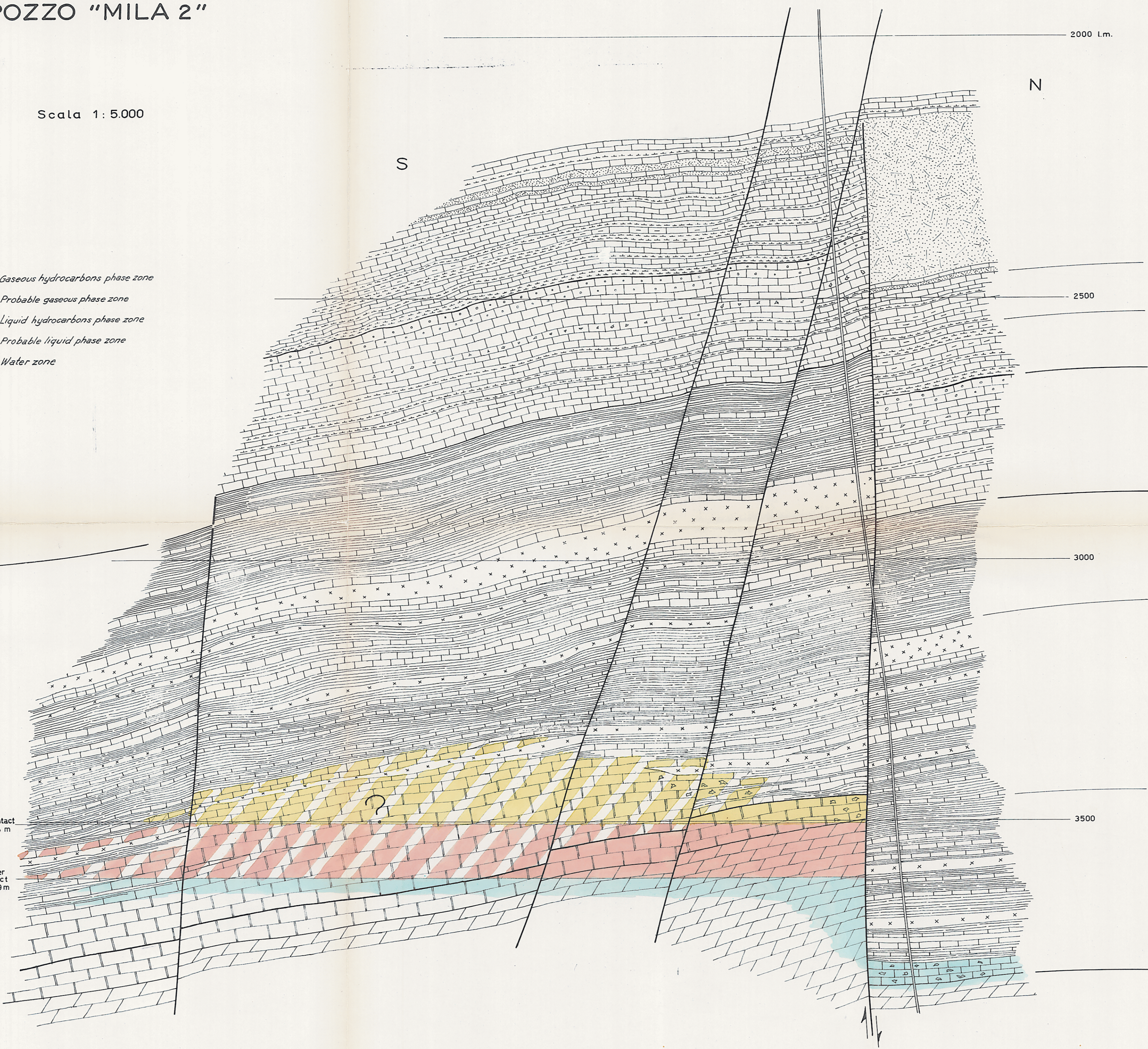
# SEZIONE GEOLOGICA POZZO "MILA 2"

Scala 1:5.000

- Gaseous hydrocarbons phase zone
- Probable gaseous phase zone
- Liquid hydrocarbons phase zone
- Probable liquid phase zone
- Water zone

Fmz. "Strepensosa"  
Membro Calcareao  
"MILA"  
Membro Argilloso

G/n contact  
- 3504 m  
  
Oil/Water  
contact  
- 3609 m



| E T A'            |        | FORMAZIONI |                    |
|-------------------|--------|------------|--------------------|
| PIANI             | EPOCHE | PERIODI    | FORMAZIONI         |
| BATHONIANO        | DOGGER | GIURASSICO | "Giar dini"        |
| TOARCIANOBAUCIANO |        |            |                    |
| DOMERIANO         | LIAS   | GIURASSICO | "Villagonia"       |
| HETTANGIANO       |        |            |                    |
| NORICO            | RETICO | TRIASSICO  | "Strepensosa"      |
| CARNICO           |        |            |                    |
|                   |        |            | Dolomia Principale |