



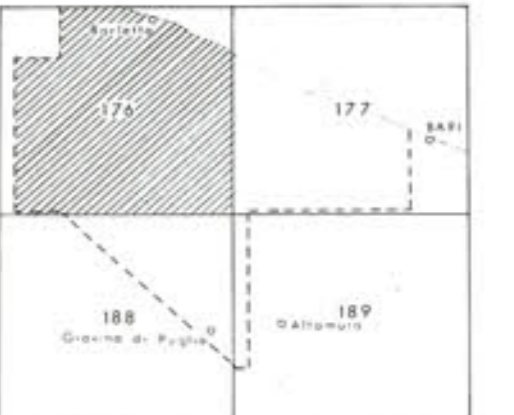
SEZIONE IDROCARBURI
di NAPOLI
- 4 SET. 1971
Prot. N. 2633
Sez. 1/200
Poz. 72

GULF ITALIA COMPANY

PHOTOGEOLOGY OF
MOLFETTA, BARLETTA,
CANOSA DI PUGLIA PERMITS

PHOTOGEOLOGICAL MAP

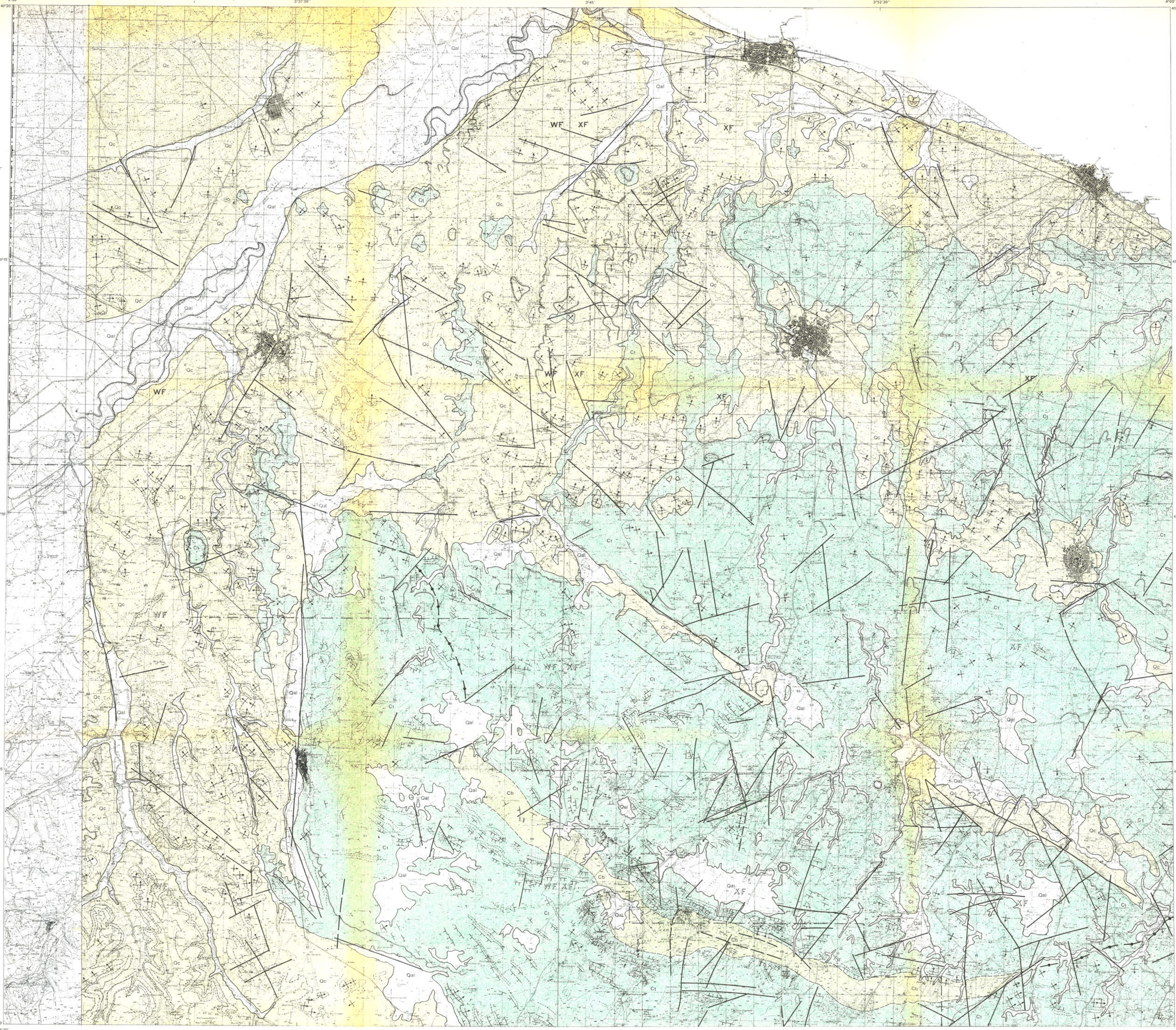
RESERVATO



GEOMAP
GEOLOGICAL SURVEYS
FIRENZE - 1970

Scale 1:50,000

SHEET 176



LEGEND

- QUATERNARY**
 - Qal Talus; "punchins"; recent and actual alluvial deposits, often terraced; alluvial deposits in erosional furrows ("tame"), "GARDI".
 - Qc Alluvial terraced deposits of lacustrine and fluvio-lacustrine origin; polygenic pebbles-stones and mica-quartzose sands of continental origin. Conglomerates, sands, calcarenites and clay of marine origin. "FUGGIONE".
 - OLIGOCENE**
 - Oc Brownish limestones in thick layers containing Gastropods.
 - CRETACEOUS**
 - C2 Limestones in beds, with Rudistae, alternated with encrusted limestones, reddish and sandy. "Altare limestone". "SANDRINO".
 - C1 Detrital limestones in thick layers or beds with occasional Rudistae. Presence of some fossiliferous levels and of slate limestones ("Chiancarelli"). "C1" is made of massive brecciated limestones. "Muri Limestone". "TUNNINO-SANDRINO".
-
- Geologic boundary
 - Key bed
 - Fault observed, inferred
 - Horizontal beds
 - Dip less than 5°
 - Dip from 5° to 15°
 - Dip above 15°
 - Dip inferred from morphology
 - Sharp terrace edge