



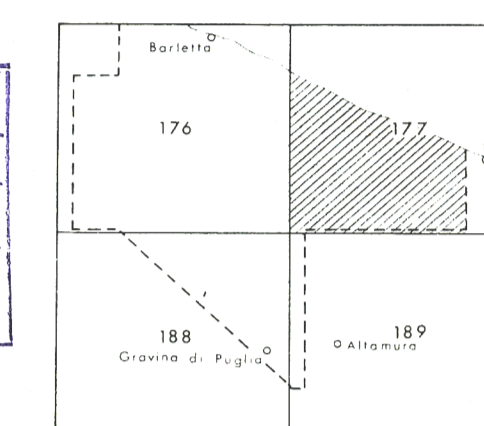
SEZIONE IDROCARBURI
di N. 177
- 4 SET. 1974
Prot. N. 2633
Sez. PEOC Posiz. 10

GULF ITALIA COMPANY

PHOTOGEOLOGY OF
MOLFETTA, BARLETTA,
CANOSA DI PUGLIA PERMITS

PHOTOGEOLOGICAL MAP

SEZIONE IDROCARBURI
di N. 177
- 4 SET. 1974
Prot. N. 2633
Sez. PEOC Posiz. 10

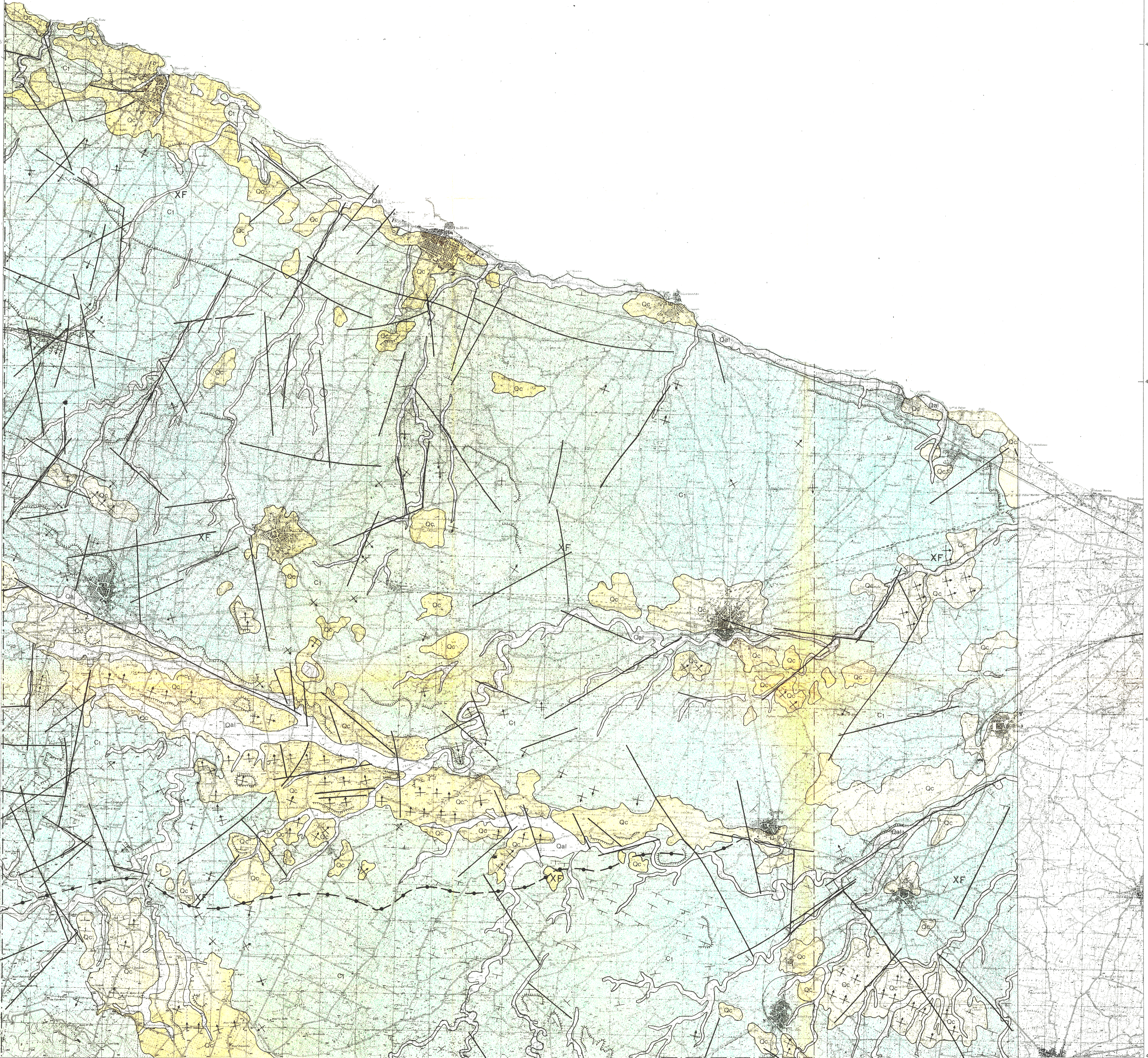


RISERVATO

GEOMAP
GEOLOGICAL SURVEYS
FIRENZE - 1970

Scale 1:50,000

SHEET 177



LEGEND

- QUATERNARY
 - Qal Talus; "panchina"; recent and actual alluvial deposits, often terraced; alluvial deposits in erosional furrows ("lame"), OLIGOCENE.
 - Qc Alluvial terraced deposits of lacustrine and fluvio-lacustrine origin; polygenic pebbles-stones and micro-quartzose sands of continental origin. Conglomerates, sands, calcarenites and clay of marine origin. PLEISTOCENE.
 - OLIGOCENE
 - Oc Brownish limestones in thick layers containing Gastropoda.
 - CRETACEOUS
 - C2 Limestone in beds, with Rudistae, alternated with encrusted limestones, reddish and sandy. "Mancarella limestone". SERRAVALLE.
 - C1 Detrital limestones in thick layers or beds with occasional Rudistae. Presence of some fossiliferous levels and of slate limestones ("Mancarella"). "Cb" is made of massive brecciated limestones. "Mari limestone". TUNZING-BARROTTI.
-
- Geologic boundary
 - - - Key bed
 - - - Fault observed, inferred
 - + Horizontal beds
 - + Dip less than 5°
 - + Dip from 5° to 15°
 - + Dip above 15°
 - + Dip inferred from morphology
 - Scarp, terrace edge