

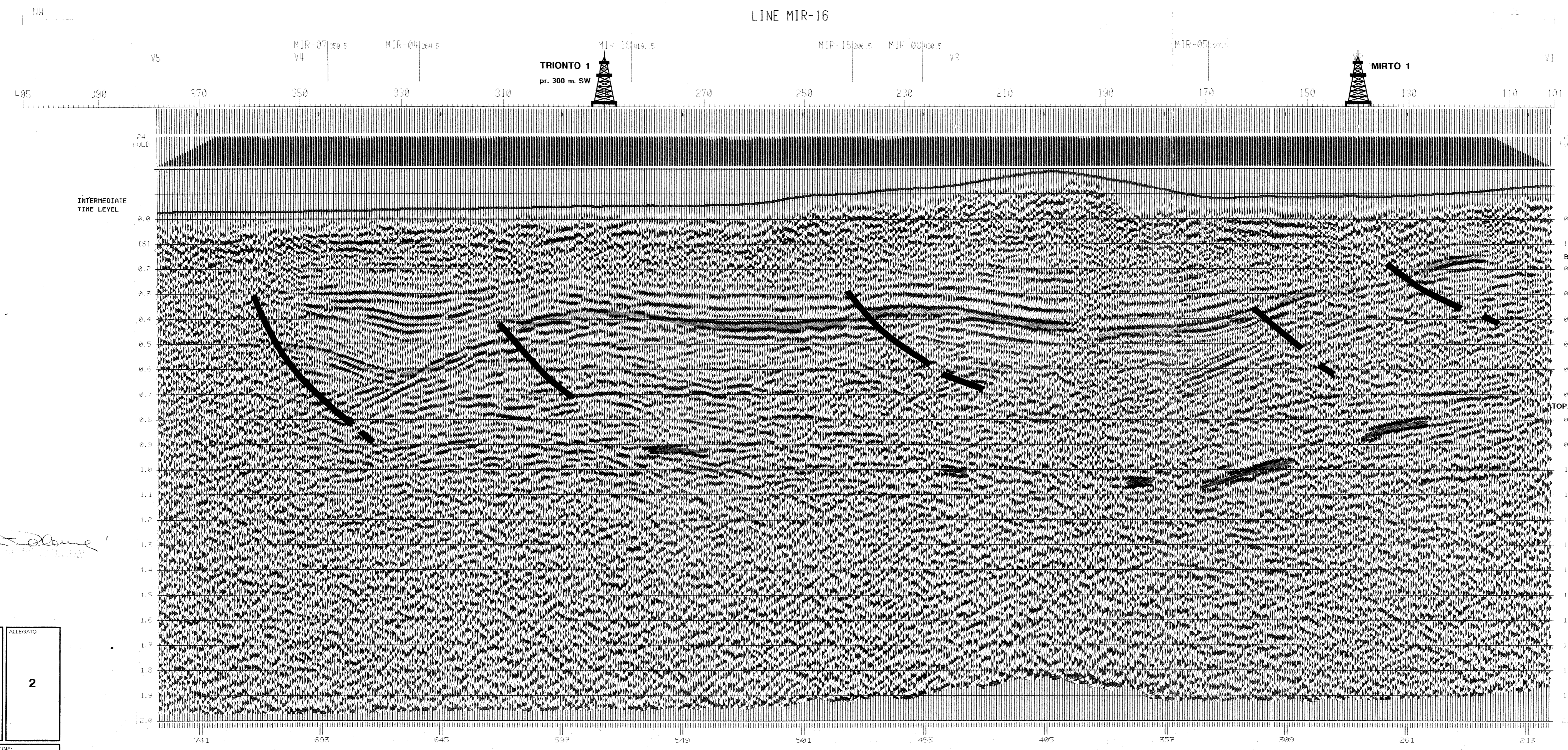
STACKING VELOCITIES

LINE MIR-16

FORM:	180	FORM:	140	FORM:	120
T0:	V. 1	T0:	V. 2	T0:	V. 3
(S):	(M/S)	(S):	(M/S)	(S):	(M/S)
0.100	1.650	0.100	1.650	0.100	1.550
0.200	1.750	0.200	1.750	0.200	1.580
0.300	1.800	0.300	1.800	0.300	1.640
0.400	1.900	0.400	1.900	0.400	1.700
0.500	2.000	0.500	2.000	0.500	1.750
0.600	2.100	0.600	2.100	0.600	1.800
0.700	2.150	0.700	2.150	0.700	1.850
0.800	2.200	0.800	2.200	0.800	1.900
0.900	2.400	0.900	2.400	0.900	2.000
1.000	2.500	1.000	2.500	1.000	2.050
1.200	2.600	1.200	2.600	1.200	2.100
1.400	2.610	1.400	2.610	1.400	2.100
1.600	2.900	1.600	2.900	1.600	2.050
1.800	3.000	1.800	3.000	1.800	2.050
2.000	3.000	2.000	3.000	2.000	2.100

FORM:	250	FORM:	270
T0:	V. 4	T0:	V. 5
(S):	(M/S)	(S):	(M/S)
0.100	1.450	0.100	1.450
0.200	1.450	0.200	1.450
0.300	1.500	0.300	1.500
0.400	1.600	0.400	1.600
0.500	1.700	0.500	1.700
0.600	1.800	0.600	1.800
0.700	1.900	0.700	1.900
0.800	2.050	0.800	2.050
0.900	2.100	0.900	2.100
1.000	2.250	1.000	2.250
1.200	2.350	1.200	2.350
1.400	2.400	1.400	2.400
1.600	2.610	1.600	2.610
1.800	2.740	1.800	2.740
2.000	3.000	2.000	3.000



RECORDING PARAMETERS

CONTRACT NO.: FRENCH-SEISMO-84  
 FIELD PART: FRENCH-SEISMO-84  
 RECORDING PERIOD: 01/01/84-01/31/84

FIELD SYSTEM:  
 INSTRUMENT TYPE: DFG 1 - 100 Hz  
 TRIGGER PARTS: SEISMIC-1 (100 Hz)  
 RECORD LENGTH: 2.0  
 SHIFLING RATE: 0.10  
 RECORDING FILTER: LOW CUT: 10 Hz, HIGH CUT: 100 Hz  
 GAIN CONTROL: OFF

SUBSURFACE CORRECTION: 24-FOLD  
 RECEIVER TYPE: GEOPHONIC 20 Hz  
 NUMBER OF CHANNELS: 48  
 NUMBER OF RECEIVERS PER GROUP: 24

RECEIVER CONFIGURATION:  
 3.0 m  
 1.45 m

ENERGY SOURCE: HYDRA-LIC HAMMER 10000  
 NUMBER OF PAGES: 30 (3 PAGES PER POSITION)  
 VERTICAL STACKING: 24

EMITTER MARK:  
 EG HF EG  
 25 m

EMITTER-RECEIVER CONFIGURATION:  
 150 120 HF 104 181  
 575 m 62.5 m 62.5 m 575 m  
 125 m

NUM: 1000 - DIR: 000 - 000

PROCESSING SEQUENCE

1. INPUT: TAKE FROM RECORDING UNIT (24-FOLD)
  2. DEMULTIPLYING
  3. REFORMING FROM 120 TO 100 Hz (WITH 100 Hz FILTER)
  4. GAIN REFORM
  5. CORRECTION
  6. STATIC CORRECTION (DOWN TO INTERMEDIATE TIME)
  7. SPHERICAL DIVERGENCE CORRECTION
  8. NEAR-FIELD CORRECTION
  9. DEFORMING TO TIME PRODUCTION (DISTANCE DEPENDENT)
  10. DYNAMIC CORRECTION (DEFINED FROM PREVIOUS INTERFERING LINES AND VELOCITY ANALYSIS)
  11. AUTOMATIC GAIN RESIDUALS SURFACE (CONSISTENT THRESHOLD)
  12. HORIZONTAL LEVEL STACKING
  13. 24-FOLD STACK
  14. STATIC CORRECTION (DOWN TO 100 Hz LEVEL)
  15. FREQUENCY FILTER: TIME VARIATION
  16. AUTOMATIC GAIN CONTROL
  17. DISPLAY: HORIZONTAL SCALE: 1:1 (1000)  
 TRIGGER PARTS: 1:1 (1000)  
 VERTICAL SCALE: 1:1 (1000)  
 FOUR-DIGIT NEGATIVE NUMBERS ON THE 4-BLOCK SECTION
- NUM: 1000 - DIR: 000 - 000

SELM S.P.A. - SOCIETA' ENERGIA MONTEDISON S.P.A.	1:12 500	875 301
	MIRTO 1987 LINE MIR-16 24-FOLD STACK (TV-FILTER)	

**ISTANZA DI PROROGA PERMESSO "MIRTO"**

**RELAZIONE TECNICA**

ALLEGATO 2

AUTORE: PENSIERI

DISEGNATORE: MONCELLINI

DATA: 1-91

SCALA: 1:12.500

DISEGNO N°: 1551

REVISIONE:

