

CH-479-86

S.P. 89 TO S.P. 235

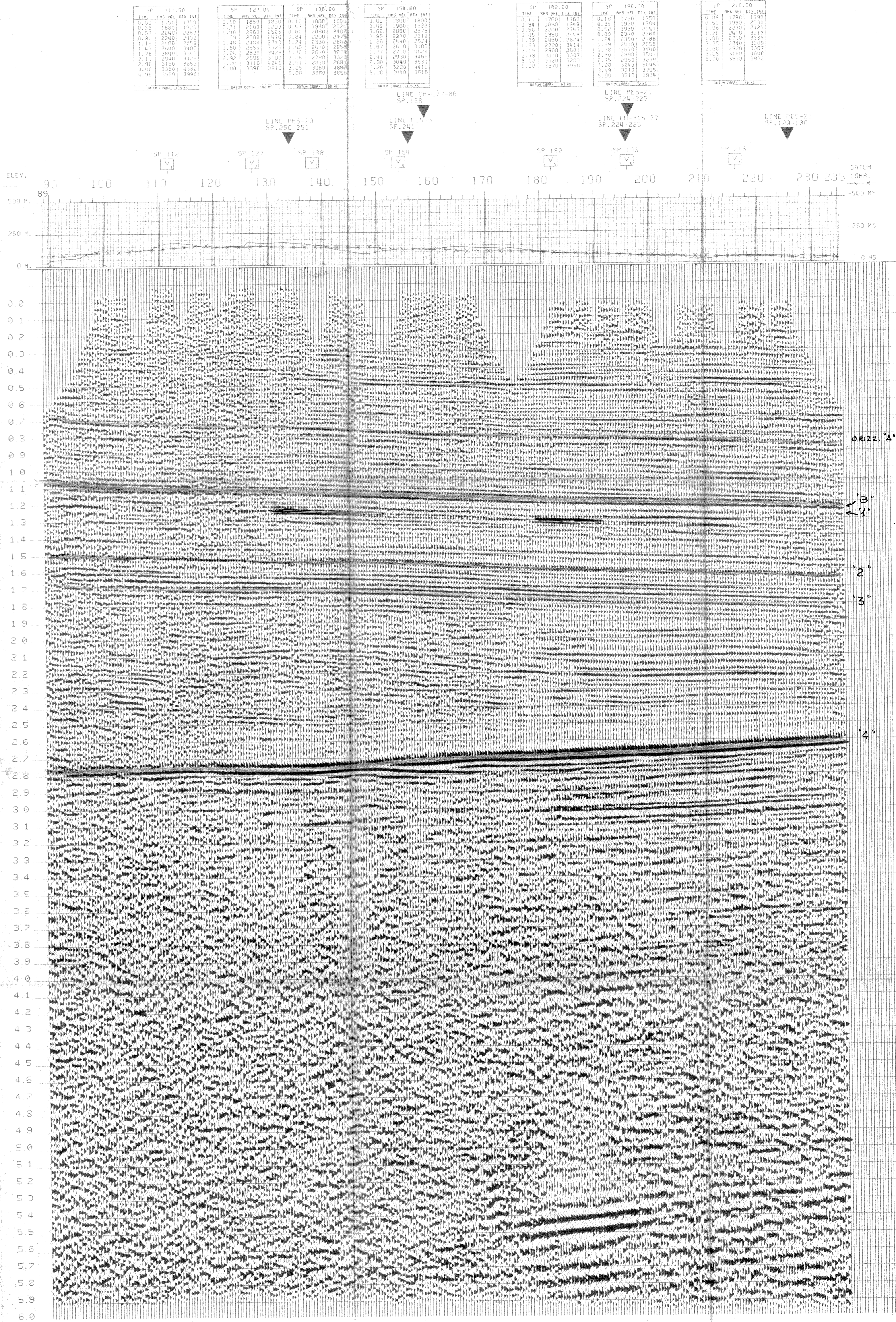
29 OCT 1986



1200PCT DBS-STK-TVF
CORRECTED TO ZERO PHASE

C.P.A.	
WESTERN RICERCHE GEOFISICHE MILAN - ITALY	
ITALIA ZONA 3 PROSPECT MIGLIANICO	
DATE SHOT: 29 OCT 1986 DATE PROC. REC.: 29 SEPTEMBER 1986	
RECORDING DATA	PROCESSING SEQUENCE
DATUM PLANE: SEA LEVEL	DEM. FILTERS
START CORR. LOW: METHOD: REACTION	PROCESSED LENGTH: 6 SEC
VELOC FOR STAT CORR.: 2000M/SEC	SAMPLE RATE: 4 MS
INSTRUMENTS	PRE-FILTER
CONTRACTOR: SING SPA	TIME RECS: L.C. 100/DB/ACTI H.S.
PROJECT NUMBER: 01	0.004 12/24 80/48
RECORDING SYSTEM: SN 308	0.008 12/24 80/48
FORMAT: 16S-D	PRE-PROCESSOR: RECON
RECORDING FILTERS: 10HZ	A) INSTRUMENT PHASE COMPENSATION
ANTIALIAS FILTERS: 177.5HZ	B) DETERMINISTIC APPROX. MIN. PHASE O/P
NOTCH FILTER: 0.001	C) COMMON DEPTH GAINING
SAMPLE RATE: 2.45	D) GEOMETRICAL SPREADING GAIN APPLIED
RECORD LENGTH: 7 SEC	E) GEOMETRICAL SPREADING GAIN APPLIED
SOURCE	F) GEOMETRICAL SPREADING GAIN APPLIED
UNITS: SOURCE: EXPLOSIVE	G) GEOMETRICAL SPREADING GAIN APPLIED
SHOT HOLES: 5/4"	H) GEOMETRICAL SPREADING GAIN APPLIED
AVERAGE CHARGE/SHOT: 2 KG	I) GEOMETRICAL SPREADING GAIN APPLIED
AVERAGE SHOT DEPTH: 24 M	J) GEOMETRICAL SPREADING GAIN APPLIED
UPWARD GROUND MOTION: NEGATIVE NUMBER ON TRACE	PREL. VELOC. ANALYSIS
SPREAD CONFIGURATION	N.M.D.: 1200PCT PREL. STACK
NUMBER OF GROUPS: 36	A) STRETCH DEPENDENT MUTE
GROUP INTERVAL: 60 M	B) AUTOMATIC RESIDUAL STATICS
SURFACE COVERAGE: 1200 PCT	FINAL VELOCITY ANALYSIS
1 90 100 110 120 130 140 150 160 170 180 190 200 210 220 230 235	N.M.D.: 1200PCT STR
1900	A) STRETCH DEPENDENT MUTE
(CENTRE OF SOURCE ARRAY)	B) AUTOMATIC RESIDUAL STATICS
DIRECTION OF LINE: NORTH-EAST	EQP. CONSISTENT RESIDUAL STATICS
GEOPHONES PATTERN	1200PCT FINAL STA
GEOPHONE PER GROUP: 24	RELATIVE AMPLIT. COMPENSATION
GEOPHONE TYPE: SENSOR SM 4	RANDOM NOISE SUPPRESSION
GEOPHONE FREQUENCY: 10 HZ	ZERO PHASE INVERSION
X = 2.0M Y = 40M Z = 60M	STATISTICAL APPROACH FROM STACKED DATA
SOURCE PATTERN	TIME VARIANT FILTER
SINGLE SHOT PER SHOT POINT	TIME RECS: L.C. 100/DB/ACTI H.S.
LEGEND	0.000 20/24 75/48
VELOCITY ANALYSIS	1.800 16/24 60/48
INTERSECTIONS	2.500 16/24 60/48
ANALYST: A. Pavesi DATE: 2/2/87	3.500 12/24 40/48
	4.500 16/24 60/48
	5.000 16/24 60/48
	FILTERS ARE INTERPOLATED IN TIME AND SPACE.
	FILTERS ARE SPECIFIED AT START OF LINE.
LINE LOCATION MAP	RMS GAIN
PROSPECT MAP	PLAYBACK
MIGLIANICO	HORIZONTAL SCALE: 0.2CM/CM 0.2CM/CM 12.47M
	VERTICAL SCALE: 10CM/SEC 20CM/SEC 5CM/
	PLT. DIRECTION: 45°
	NEGATIVE NUMBERS = WHITE TROUGHS

THE CLIENT REPRESENTATIVE HAS BEEN MR. A. COLOMBARI APPOINTED BY PETREX ESPLORAZIONE (IDROCARBURI) MILANO - ITALY



ORIZZ. A

3"

4"

2"

8"

4"