

LINEA MT-457-85

DIS.N: 468/2D DATA: Gennaio 88' ALLEGATO 2

AGIP

WESTERN RICERCHE GEOFISICHE
MILAN - ITALY

AREA ITALIA
PERMIT METAPONTO

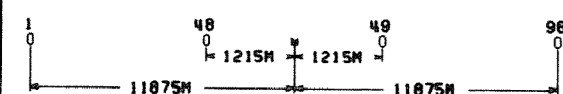
DATE SHOT JANUARY/1988
DATE PROCESSED JUNE /1988

RECORDING DATA

CONTRACTOR GLOBE EXPL.
PARTY NUMBER GLOBE-4
RECORDING SYSTEM SEG-B
SAMPLE RATE 2 MS
RECORD LENGTH 7 SEC
L.C.FILTERS 15HZ-240B/OCT
ANTIALIAS FILTERS 106.7HZ-620B/OCT
NOTCH FILTER OUT
SUBSURFACE COVERAGE 800 PCT
GROUP INTERVAL 25 M
NUMBER OF GROUPS 96

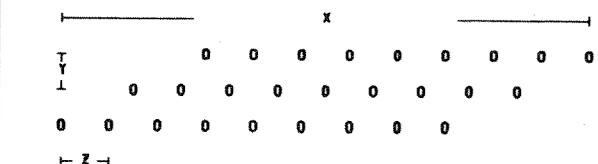
VEL. USED FOR STAT. CORR 1900 M/S
DATUM PLANE ELEVATION SEA LEVEL
UPWARD GROUND MOTION = NEGATIVE NUMB. ON TAPE

SPREAD DIAGRAM



CENTRE OF SOURCE ARRAY
DIRECTION OF LINE NORTH-EAST

GEOPHONE PATTERN DIAGRAM



GEOPHONE/GROUP 12
GEOPHONE TYPE/HZ SM-48/10HZ
X = 44 M Y = 6 M Z = 4 M

SOURCE

ENERGY SOURCE DYNAMITE
SOURCE PATTERN SINGLE SHOT
AVERAGE SHOT DEPTH 29 M
AVERAGE SHOT CHARGE 4 KG

PROCESSING SEQUENCE

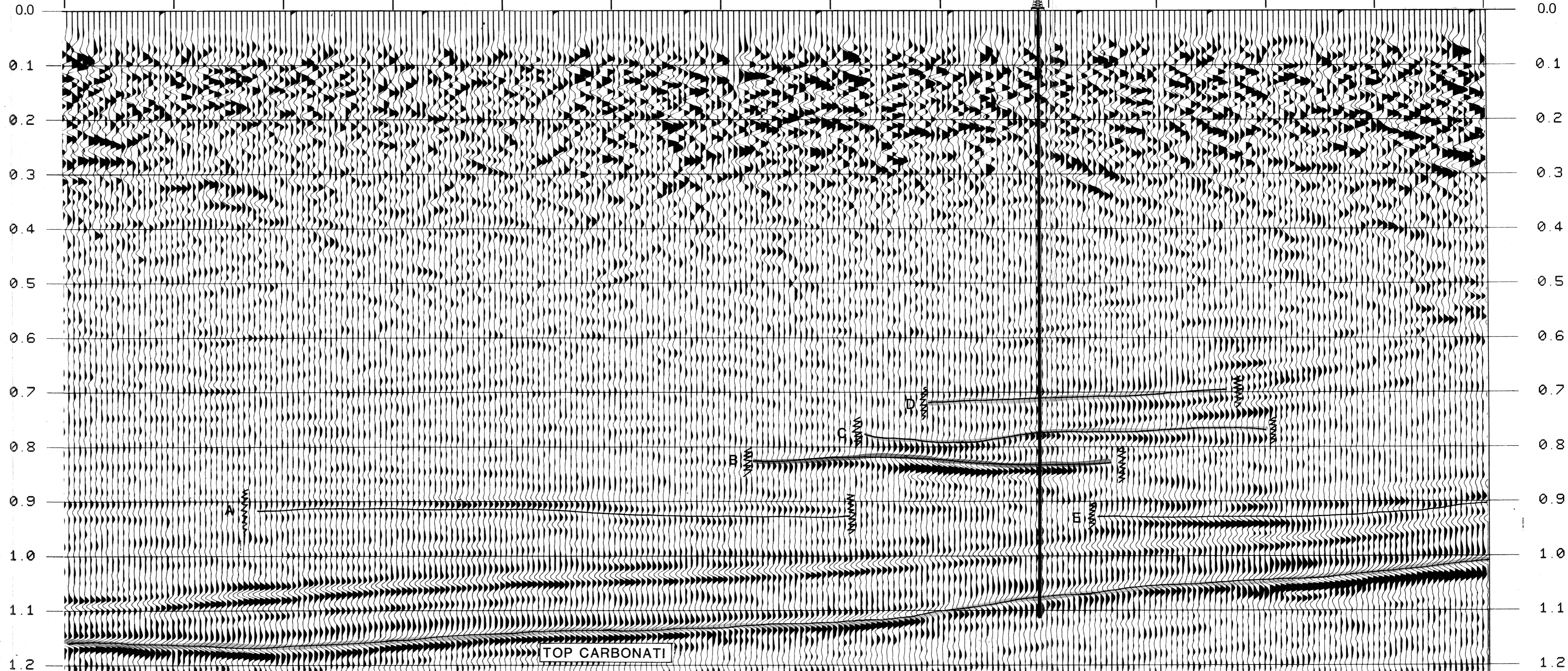
- 1 EDIT GEOPHONE AMPLITUDE
S. R. = 4 MS. LENGTH = 7 SEC.
- 2 TIME VARIANT FILTER
VERTICAL INTERPOLATION
100 MS 18/OUT HZ 18/OUT DB
900 MS 18/OUT HZ 18/OUT DB
1500 MS 16/OUT HZ 18/OUT DB
4000 MS 14/OUT HZ 18/OUT DB
- 3 PREPROCESSOR/DECON
MINIMUM PHASE INSTRUMENT SHAPING
GEOMETRICAL SPREADING GAIN APPLIED
DECON TYPE MINIMUM PHASE INVERSE FILTER
N. OF WINDOWS 3 M.L. 1 PCT
MIN. PRED. DIST 20-150MS ON 1ST WINDOW
MIN. PRED. DIST 24-150MS ON 2ND WINDOW
MIN. PRED. DIST 24-150MS ON 3RD WINDOW
- 4 SURF. CONSISTENT RESID. STATICS.
- 5 VELOCITY ANALYSIS
- 6 NMO-STATICS-MUTE APPLICATION
STRACHING DEPENDENT MUTE 150PCT
- 7 SURF. CONSISTENT RESID. STATICS.
- 8 CDP CONSISTENT RESID. STATICS.
- 9 STACK 800 PCT
TAPE CONVERSION TO SEG-Y FORMAT
- 10 ZERO PHASE CONVERSION
STATISTICAL APPROACH
- 11 PLAY BACK
PLOT DIRECTION L TO R.
NEGATIVE NUMBERS = WHITE TROUGHS

LEGEND

- ∇ VELOCITY ANALYSIS
- ▼ INTERSECTIONS

ANALYST *Stefano Guasta* DATE 6/88

MT-460-85



MT-459-85

SANSONE 1
(Proiettato 150m a NW)