

Data Marzo 1985	Dis. n° 468/1D	Allegato 1
--------------------	-------------------	---------------

Linea MT 431_84

SEZIONE IDROCARBURI
NAPOLI
26 MAR. 1985
1985
Post.



LAMALUNGA 1

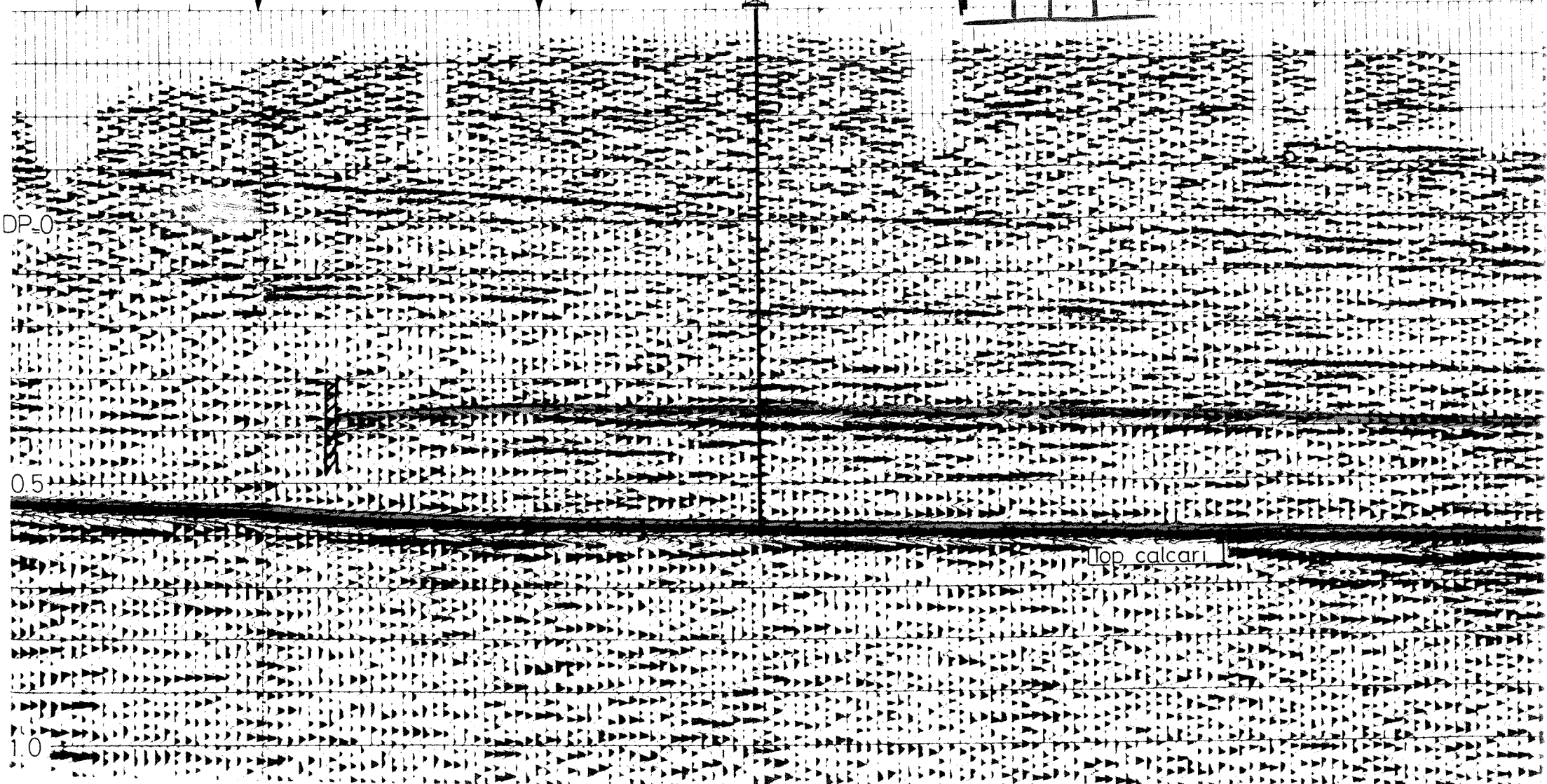
MT436_84 SP251
270 280

MT 308_77 SP431
290

300

320

330



top calcari