

COMPANY: ANSCHLUTZ ITALIAN PETROLI SPA
 WELL: MEMFI 1
 FIELD: MEMFI
 COUNTY: SICILIA
 DATE: 9/2/82
 NATION: ITALY
 LOCATION:

OTHER SERVICES-
 ISF SLS
 HDT FDC CNL

SEC: TWP: RGE:
 PERMANENT DATUM: MSL
 ELEVATIONS-
 ELEV. OF PERM. DATUM: KB: 99.0 M
 LOG MEASURED FROM: RT DF: 99.0 M
 99.3 M ABOVE PERM. DATUM GL: 95.0 M
 DRLG. MEASURED FROM: RT

PROGRAM
 TAPE NO:
 21.172
 SERVICE
 ORDER NO:
 BL 0225

DATE: 9 FEB 1982
 RUN NO: 1

DEPTH-DRILLER: 1681.0 M
 DEPTH-LOGGER: 1678.0 M
 BTM. LOG INTERVAL: 1675.0 M
 TOP LOG INTERVAL: 150.0 M
 CASING-DRILLER: 296 M
 CASING-LOGGER: 292 M
 CASING: 9.625
 WEIGHT: 43.50 LB/F
 BIT SIZE: 12.25 8.5
 DEPTH: 296 M 1681 M

TIME CIRC. STOPPED:
 TIME LOGGER ON BTM.: 2300 9/2
 MAX. REC. TEMP: 51.1 DC
 LOGGING UNIT NO: 4309
 LOGGING UNIT LOC: SYR
 RECORDED BY: P. GADSBY
 WITNESSED BY: A. PALOMBIZIO

REMARKS:

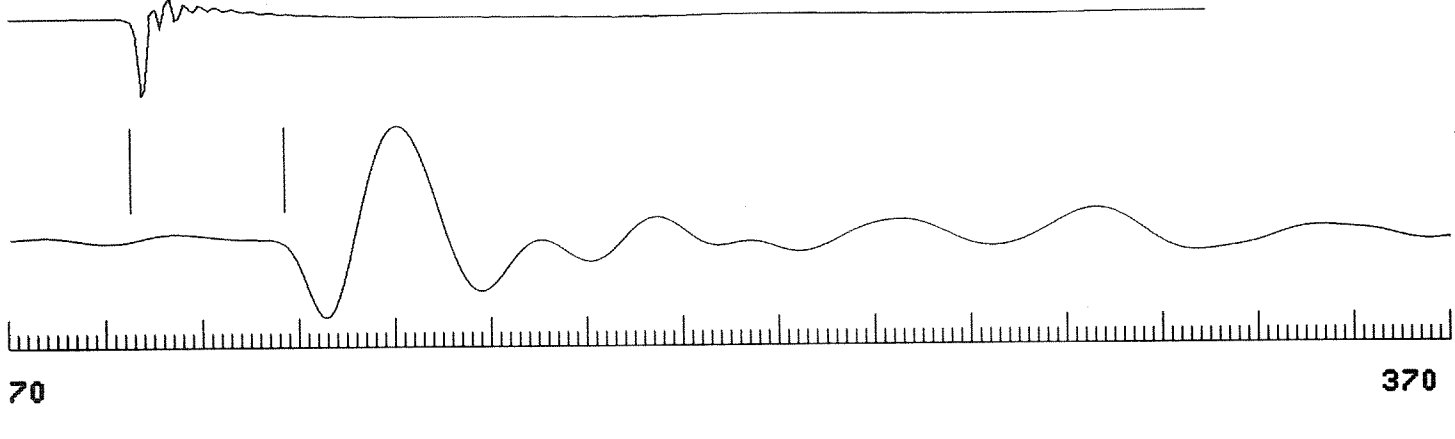
EQUIPMENT NUMBERS-
 WSM 743 WDM 714 SIEMIC EX SIRACUSA

ALL INTERPRETATIONS ARE OPINIONS BASED ON INFERENCES FROM ELECTRICAL OR OTHER MEASUREMENTS AND WE CANNOT, AND DO NOT GUARANTEE THE ACCURACY OR CORRECTNESS OF ANY INTERPRETATIONS, AND WE SHALL NOT, EXCEPT IN THE CASE OF GROSS OR WILLFUL NEGLIGENCE ON OUR PART, BE LIABLE OR RESPONSIBLE FOR ANY LOSS, COSTS, DAMAGES OR EXPENSES INCURRED OR SUSTAINED BY ANYONE RESULTING FROM ANY INTERPRETATION MADE BY ANY OF OUR OFFICERS, AGENTS OR EMPLOYEES. THESE INTERPRETATIONS ARE ALSO SUBJECT TO OUR GENERAL TERMS AND CONDITIONS AS SET OUT IN OUR CURRENT PRICE SCHEDULE.

FILE

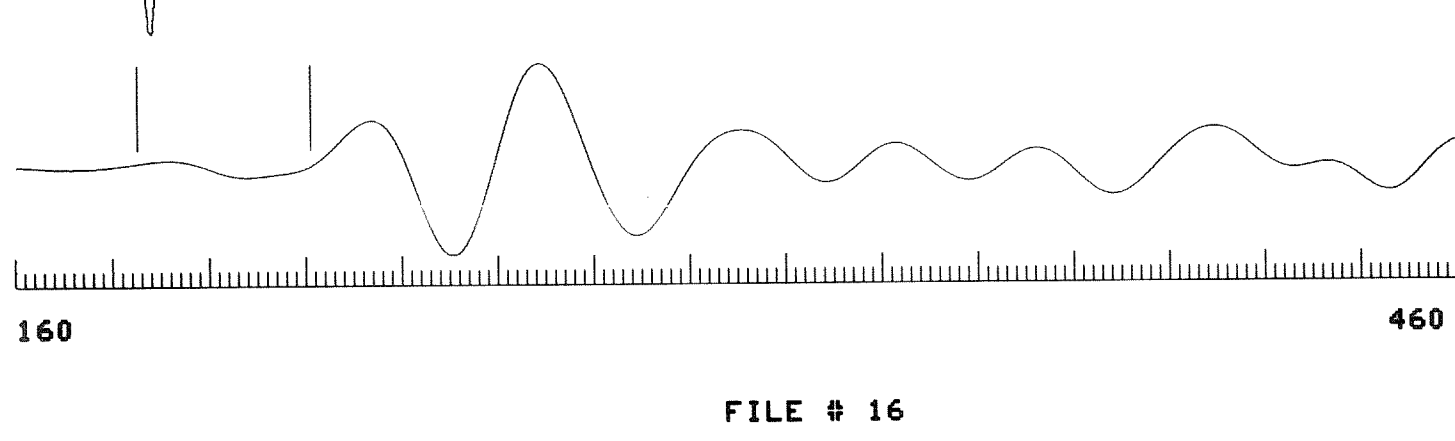
19

STACK # 14 @ 150.0 M 2/10/1982 0:38 TT = 101.7 MSEC
 GEOPHONE 0.003816 CM/SEC @ 127.2 MSEC
 SHOTS STACKED : 73, 74, 75, 76, 77



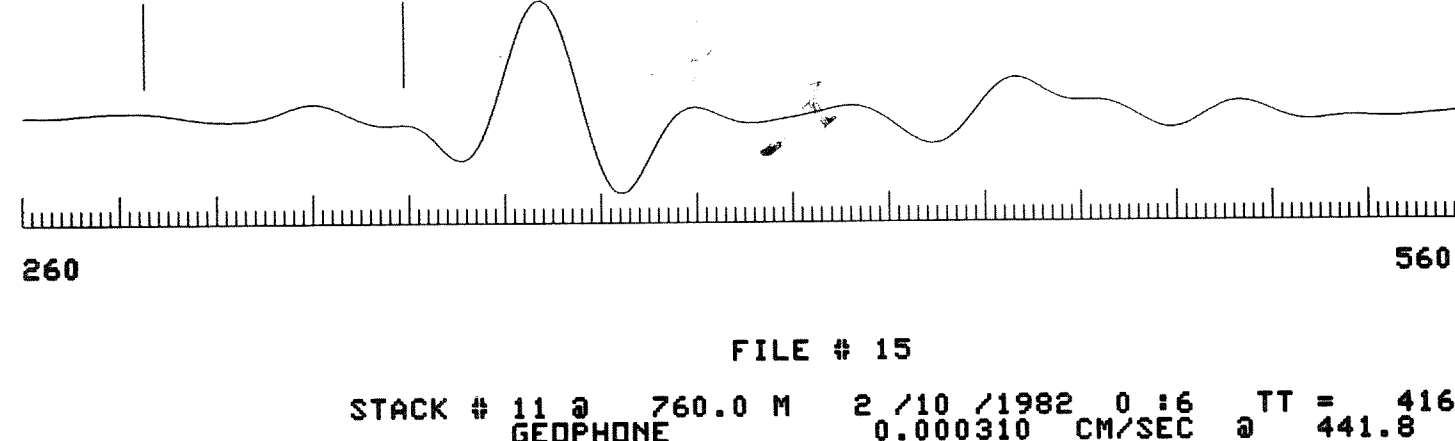
FILE # 17

STACK # 13 @ 350.0 M 2/10/1982 0:29 TT = 196.2 MSEC
 GEOPHONE 0.002128 CM/SEC @ 221.7 MSEC
 SHOTS STACKED : 67, 68, 70, 71, 72



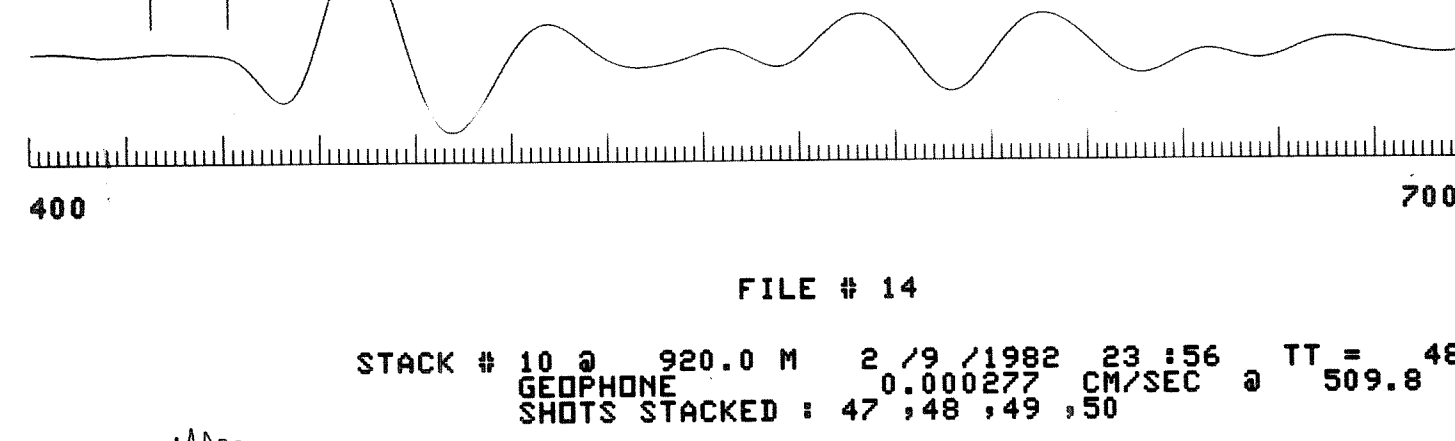
FILE # 16

STACK # 12 @ 550.0 M 2/10/1982 0:18 TT = 314.4 MSEC
 GEOPHONE 0.000427 CM/SEC @ 339.5 MSEC
 SHOTS STACKED : 60, 63, 65, 66



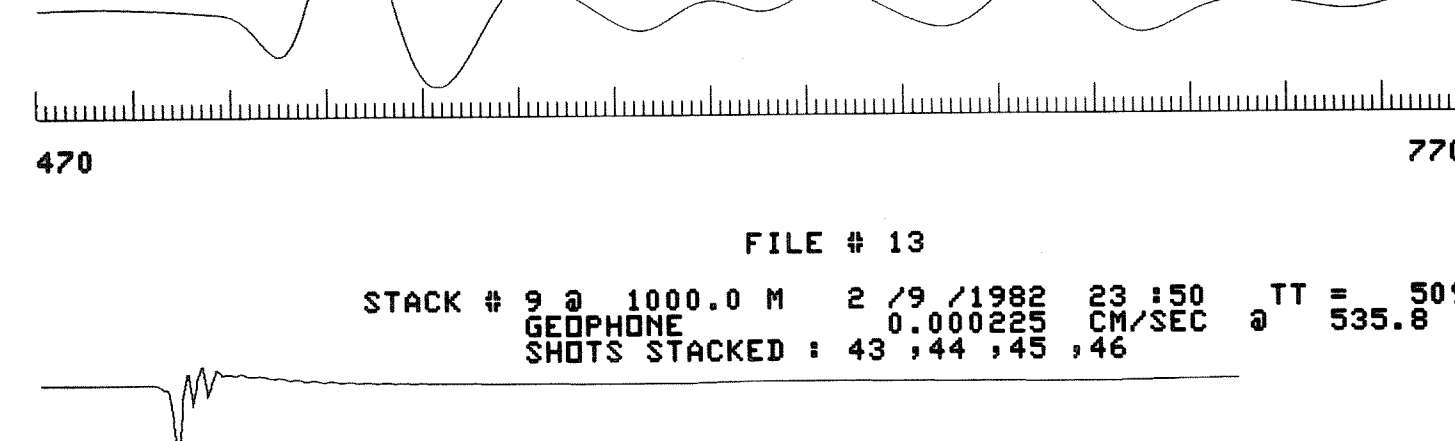
FILE # 15

STACK # 11 @ 760.0 M 2/10/1982 0:16 TT = 416.8 MSEC
 GEOPHONE 0.000310 CM/SEC @ 441.8 MSEC
 SHOTS STACKED : 54, 55, 56



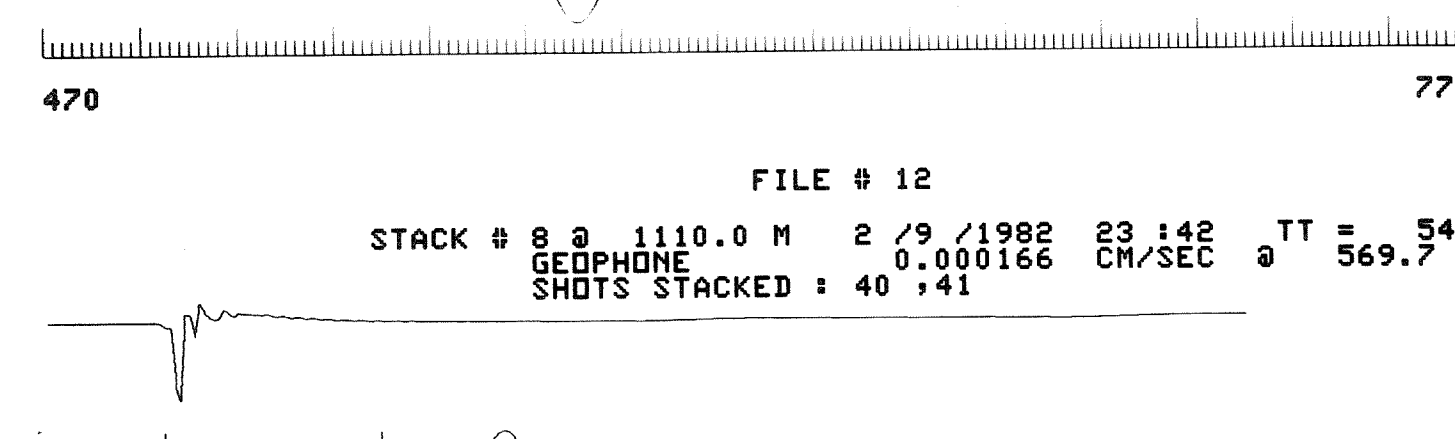
FILE # 14

STACK # 10 @ 920.0 M 2/9/1982 23:56 TT = 484.7 MSEC
 GEOPHONE 0.000277 CM/SEC @ 509.8 MSEC
 SHOTS STACKED : 47, 48, 49, 50



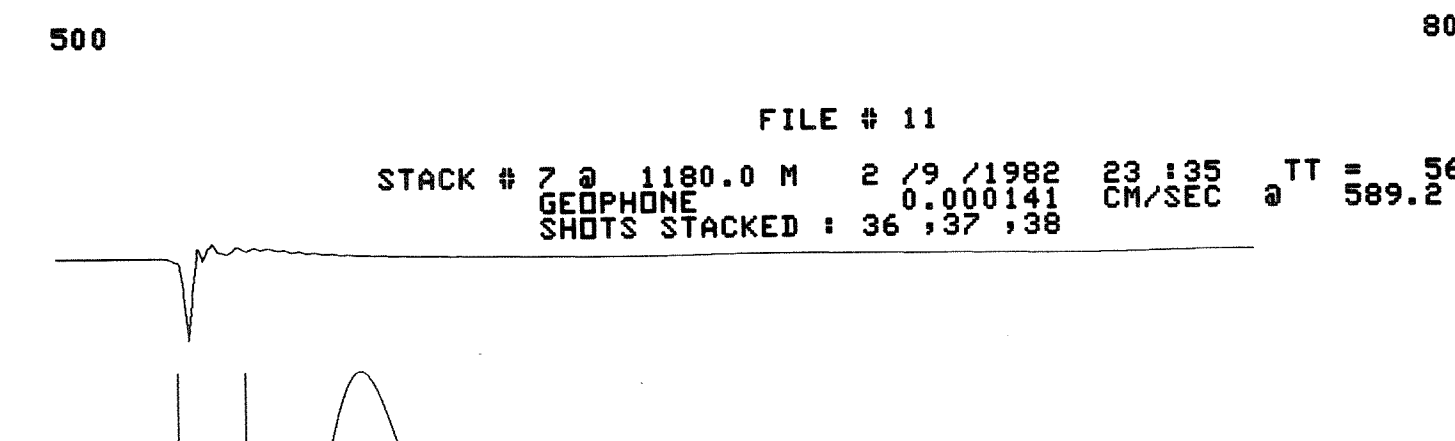
FILE # 13

STACK # 9 @ 1000.0 M 2/9/1982 23:50 TT = 509.7 MSEC
 GEOPHONE 0.000225 CM/SEC @ 535.8 MSEC
 SHOTS STACKED : 43, 44, 45, 46



FILE # 12

STACK # 8 @ 1110.0 M 2/9/1982 23:42 TT = 545.1 MSEC
 GEOPHONE 0.000166 CM/SEC @ 569.7 MSEC
 SHOTS STACKED : 40, 41



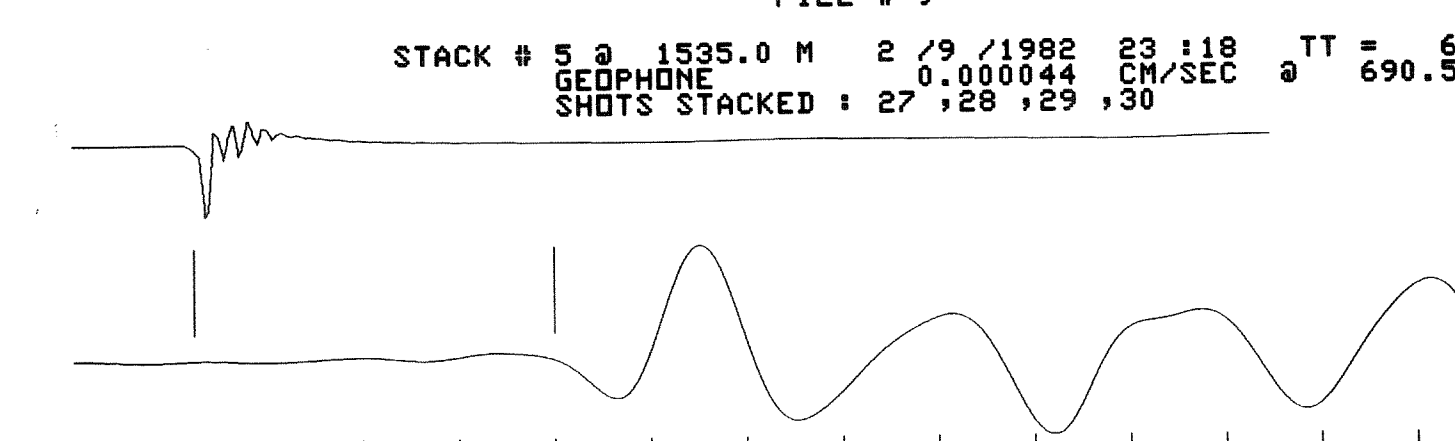
FILE # 11

STACK # 7 @ 1180.0 M 2/9/1982 23:35 TT = 564.2 MSEC
 GEOPHONE 0.000141 CM/SEC @ 589.2 MSEC
 SHOTS STACKED : 36, 37, 38



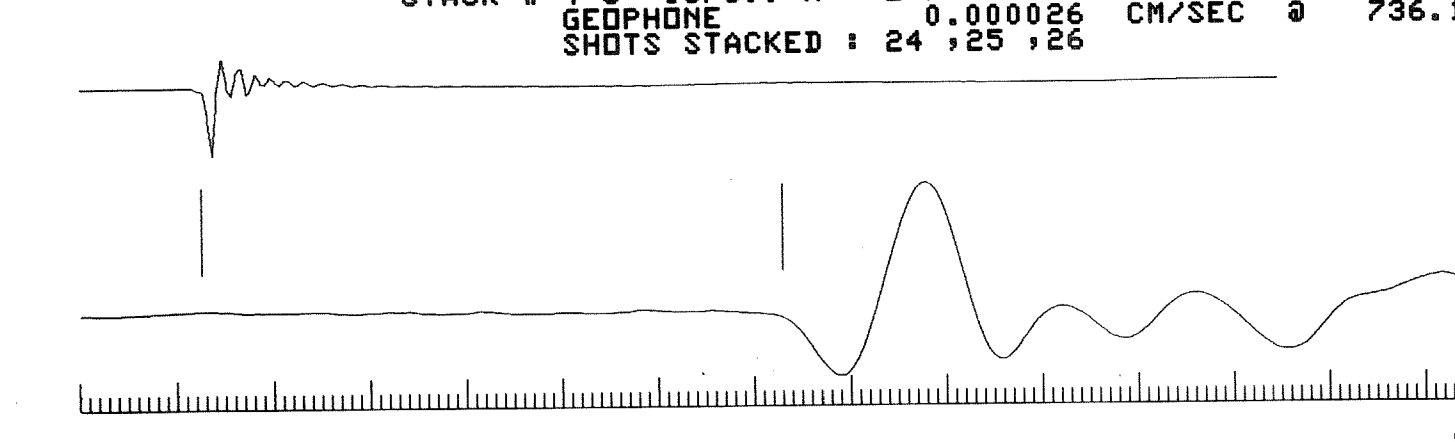
FILE # 10

STACK # 6 @ 1350.0 M 2/9/1982 23:27 TT = 622.3 MSEC
 GEOPHONE 0.000075 CM/SEC @ 647.4 MSEC
 SHOTS STACKED : 32, 33, 34, 35



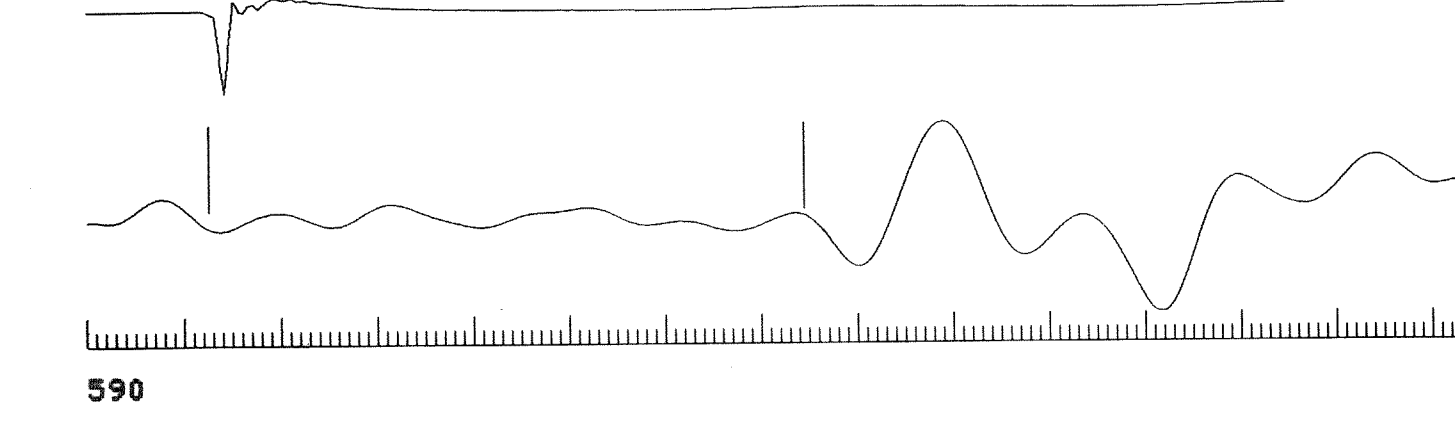
FILE # 9

STACK # 5 @ 1535.0 M 2/9/1982 23:18 TT = 665.0 MSEC
 GEOPHONE 0.000044 CM/SEC @ 690.5 MSEC
 SHOTS STACKED : 27, 28, 29, 30



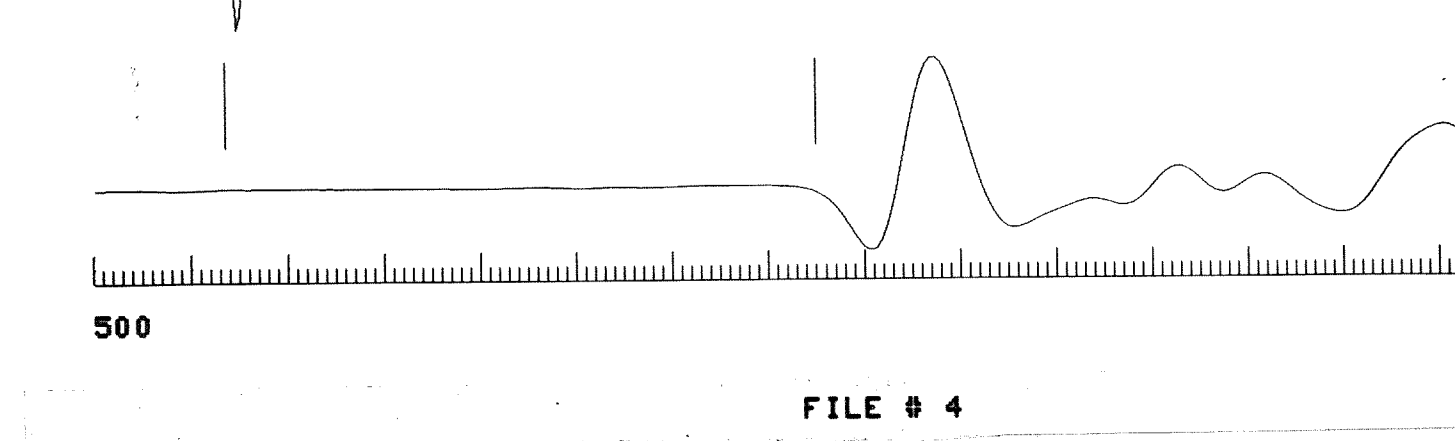
FILE # 7

STACK # 4 @ 1675.0 M 2/9/1982 23:11 TT = 711.0 MSEC
 GEOPHONE 0.000026 CM/SEC @ 736.1 MSEC
 SHOTS STACKED : 24, 25, 26



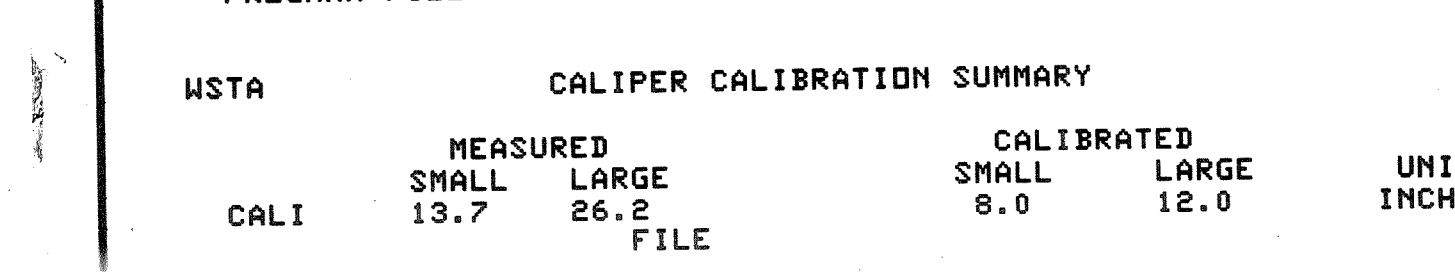
FILE # 6

STACK # 3 @ 1675.0 M 2/9/1982 23:08 TT = 713.6 MSEC
 GEOPHONE 0.000026 CM/SEC @ 739.6 MSEC
 SHOTS STACKED : 15, 16, 17, 19, 21, 22, 23



FILE # 5

STACK # 2 @ 1350.0 M 2/9/1982 22:53 TT = 623.1 MSEC
 GEOPHONE 0.000117 CM/SEC @ 650.6 MSEC
 SHOTS STACKED : 11, 12, 13



FILE # 4

BEFORE SURVEY CALIBRATION SUMMARY

PERFORMED: 82/02/09
 PROGRAM FILE: WSS (VERSION 21.172 81/ 6/10)

CALI	MEASURED		CALIBRATED		UNITS
	SMALL	LARGE	SMALL	LARGE	
	13.7	26.2	8.0	12.0	INCH

FILE